

Product datasheet for **RC211494**

ENGASE (NM_001042573) Human Tagged ORF Clone

Product data:

Product Type:	Expression Plasmids
Product Name:	ENGASE (NM_001042573) Human Tagged ORF Clone
Tag:	Myc-DDK
Symbol:	ENGASE
Mammalian Cell Selection:	Neomycin
Vector:	pCMV6-Entry (PS100001)
E. coli Selection:	Kanamycin (25 ug/mL)



[View online »](#)

ORF Nucleotide Sequence:

>RC211494 representing NM_001042573
 Red=Cloning site Blue=ORF Green=Tags(s)

TTTTGTAATACGACTCACTATAGGGCGGCCGGGAATTCGTCGACTGGATCCGGTACCGAGGAGATCTGCC
 GCC**CGGATCGCC**

ATGGAGGCCGCGCGGTGACGGTACCCGGTCGGCTACACGGCGCGCGCGCGGAGCTGCAGGGGCTGG
 CGGCCCGGAGGCGGGGACGCAGGAGGAGCAGGAGGATCAGGAGCCGCGCCGCGCGCGCGCGCGGG
 AAGGAGCATCAAAGATGAAGAAGAAGAGACAGTCTTTCGAGAGGTGGTCAGTTTTTCCCCGACCCCTG
 CCAGTTAGATATTATGACAAGGACACCACAAACCAATCAGTTTTACTTGTCTTCGCTGGAGGAGCTCT
 TGGCGTGAAGCCCGCTTGGAGGATGGCTTAAATGTGGCCCTGGAGCCCTGGCGTGTCCGACGCCCC
 TCTGAGCAGCCAGAGGCCCGGACTTTGTTGTGCATGACATGATGGCGGGTACCTGGATGACAGGTTT
 ATTCAGGGCTCGGTGGTGCAGACTCCCTATGCTTCTACCACTGGCAGTGCATCGACGCTTTGTGTACT
 TCAGCCACCACACCGTCACCATTCCCCAGTGGGCTGGACCAACTGCCACAGGCATGGGGTCTGCGT
 GCTGGGGACTTTCATCACGGAGTGAATGAAGGGGAAGGCTCTGTGAAGCCTTCTGGCCGGGATGAG
 CGCTCGTACCAGGCAGTGGCTGACCGGCTGGTCCAGATCACTCAGTTTTTTCGTTTTGATGGCTGGCTGA
 TCAACATCGAAGACTCGCTGAGTCTGGCCGCTGTGGGGAACATGCCTCCTTTCCTGCGGTACCTCACCAC
 ACAGCTGCACCGGAGGTCCCAGGGGGCCTGGTCTCTGGTATGACAGCGTGGTGCAAAGTGGGAGCTC
 AAATGGCAAGACGAACTCAACCAGCACAACAGGGTCTTCTTTGATTCTCGCAGCGCTTCTTCACTAACT
 ATAAGTGGCGGGAGGAGCACTTGGAGCGGATGCTGGGGCAGGCTGGGGAGCGCCGGGCTGATGTGTACGT
 GGGCGTGGATGTGTTGCTCGAGGGAACGTGGTCCGAGGCCGATTCGACACAGACAAGTCGTTGGAGCTG
 ATCCGAAAGCATGGCTTCTCCGTGGCTTTGTTTGGCCCGGCTGGGTGTATGAGTGTCTGGAGAAGAAG
 ATTTCTTCCAGAACCAGGACAAGTCTGGGGCCGACTGGAGCGTTATCTGCCACACATGACATCTGCTC
 CTTGCCTTTCGTACGTCCTTCTGCCTGGGCATGGGTGCACGGAGGGTCTGCTATGGCCAGGAAGAGGCG
 GTAGGGCCCTGGTACCACCTGAGCGCCAGGAGATCCAGCCCTTGTGTTGAGAACACAGGCTGGGAGGGG
 ATGGCCGGGGCTGGGTGAGGACGCACTGCTGCCTGGAGGATGCCTGGCACGGAGGAGCTCCCTGCTCGT
 CCGGGGTGTGATCCACCGGAGGTTGGAATGTGGCTGTGAGGTTATTTCCCTGCAGGCCCCAGTGCCA
 CCCAAGATTTACCTGTCCATGGTGTATAAGCTTGAGGGGCCACGGACGTCACAGTTGCTTTGGAGCTGA
 CCACAGGGGATGCCGGCAGCTGCCACATCGGTGGCATCTCAGTGTGAACGCAGAAACAAGCTCAAGACA
 CAGCCTCCGACCCTCCGGGTGCCCCCAACAGCTGGCCAGATGGTGGGCCGCTGCGGCCGCGAGCTG
 AGTGGGGCTGGGTCCAGCACTGCTACGAGGTGAGCCTGCGTGGGTGCCTGCTGCTAGACCTCCTCGTTT
 GCTTCTCACGGCCGCGGGTAGTCGGGAGGAGGAGGCTTACCTGTCCGCTTGGAGAGATCCAGGTGGT
 GGACGCTGCCAGCCTGCTGGCCCTCTGCCCAAGTGCAGGCCGTCACCATCTCTCACATCCGCTGGCAG
 CCATCCGCTCTGAGCGGGAGGGGCCCCCTGCTGCTCCAGCTCAGCTGCACCCTGCACTGGTCCCTTCC
 TCCTCTACAAGTCCGTTGCTTCCGAATCCACTGCTGGGAGGGATGAGTGTACTCTCCGGGCAGGGA
 GCTGCCGAGGCCAGAGATGCCCATGTTCTGGGGTTGGCTTTTGCCACCCAGTACCGGATAGTGGACCTG
 CTGGTGAAGCCCGGGCCCGCCAGGATCGTCGCATGGAATTTCTGGTGGAGCCTGTCCCCAAGGAAG
 GTTCCGGTACCTCAGGCCGAGTGGGGCAGGGCAGTTCTGCTTTATTACGCCCTGCA

ACGCGTACGCGGCCGCTCGAGCAGAACTCATCTCAGAAGAGGATCTGGCAGCAAATGATATCCTGGATT
 ACAAGGATGACGACGATAAGGTTTAA

Protein Sequence: >RC211494 representing NM_001042573
Red=Cloning site Green=Tags(s)

```

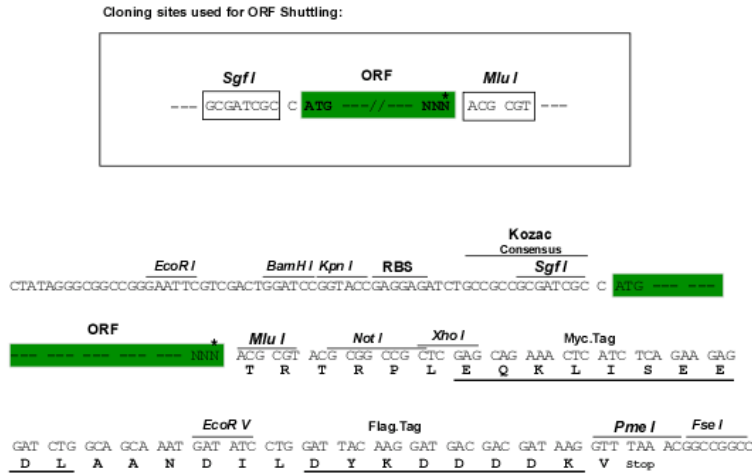
MEAAAVTVTRSATRRRRRQLQGLAAPEAGTQEEQEDQEPRRRRRPGRS IKDEEEETVFREVVFSFDPDL
PVRYDKDITTKPISFYLSLEELLAWKPRLEDGFNVALEPLACRQPPLSSQRPTLLCHDMMGGYLDDRF
IQGSVVQTPYAFYHWQCIDVFVYFSHHTVTIPPVGWNTNAHRHGVCVLGTFITWNEGGRLCEAFIAGDE
RSYQAVADRLVQITQFFRFDGWLINIENSLSLAAVGNMPPFLRYLTTQLHRQVPGGLVLWYDSVVQSGQL
KWQDELNQHNRFVFDSCDGFFTNYNWRREEHLERMLGQAGERRADVYVGVDFARGNVVGGRFDTDKSLEL
IRKHGFSVALFAPGWVYECLEKKDFFQNDKFWGRLERYLPTHSICSLPFVTSFCLGMGARRVCYQEEA
VGPWYHLSAQEIQPLFGEHRLGGDGRGWVTRHCCLEDAWHGGSSLLVRGVIPPEVGNVAVRLFSLQAPVP
PKIYLSMVYKLEGPDTVTVALELTTGDAGSCHIGGISVLNAETSSRHSRPLRVPPTKLARWVGRGCRQL
SGGWVQHCYEVSLRGCLLLDLLVCFSRPPGSREEESFTCRLGEIQVDAASLLAPLQVQAVTISHIRWQ
PSASEREGPPALLQLSCTLHWSFLLSQVRCFRIHCWGGMSDDSPGRELPRPEMPMFLGLAFATQYRIVDL
LVEAAGPGQDRRMEFLVEPVPKEGFRVQA EWGRAVLLYSAPA
  
```

TRTRPLEQKLISEEDLAANDILDYKDDDDKV

Chromatograms: https://cdn.origene.com/chromatograms/mk8025_f08.zip

Restriction Sites: SgfI-MluI

Cloning Scheme:



* The last codon before the Stop codon of the ORF

ACCN: NM_001042573

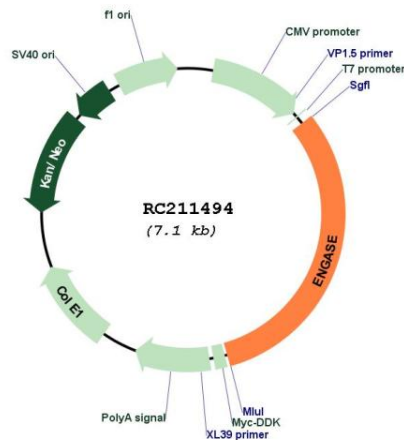
ORF Size: 2229 bp

OTI Disclaimer: The molecular sequence of this clone aligns with the gene accession number as a point of reference only. However, individual transcript sequences of the same gene can differ through naturally occurring variations (e.g. polymorphisms), each with its own valid existence. This clone is substantially in agreement with the reference, but a complete review of all prevailing variants is recommended prior to use. [More info](#)

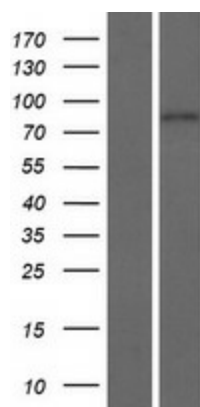
OTI Annotation: This clone was engineered to express the complete ORF with an expression tag. Expression varies depending on the nature of the gene.

Components:	The ORF clone is ion-exchange column purified and shipped in a 2D barcoded Matrix tube containing 10ug of transfection-ready, dried plasmid DNA (reconstitute with 100 ul of water).
Reconstitution Method:	<ol style="list-style-type: none">1. Centrifuge at 5,000xg for 5min.2. Carefully open the tube and add 100ul of sterile water to dissolve the DNA.3. Close the tube and incubate for 10 minutes at room temperature.4. Briefly vortex the tube and then do a quick spin (less than 5000xg) to concentrate the liquid at the bottom.5. Store the suspended plasmid at -20°C. The DNA is stable for at least one year from date of shipping when stored at -20°C.
RefSeq:	NM_001042573.3
RefSeq Size:	4490 bp
RefSeq ORF:	2232 bp
Locus ID:	64772
UniProt ID:	Q8NFI3
Cytogenetics:	17q25.3
Protein Pathways:	Other glycan degradation
MW:	83.8 kDa
Gene Summary:	This gene encodes a cytosolic enzyme which catalyzes the hydrolysis of peptides and proteins with mannose modifications to produce free oligosaccharides. [provided by RefSeq, Feb 2012]

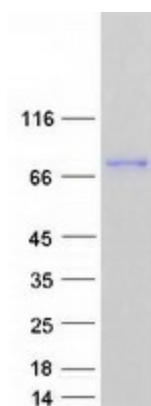
Product images:



Circular map for RC211494



Western blot validation of overexpression lysate (Cat# [LY420986]) using anti-DDK antibody (Cat# [TA50011-100]). Left: Cell lysates from untransfected HEK293T cells; Right: Cell lysates from HEK293T cells transfected with RC211494 using transfection reagent MegaTran 2.0 (Cat# [TT210002]).



Coomassie blue staining of purified ENGASE protein (Cat# [TP311494]). The protein was produced from HEK293T cells transfected with ENGASE cDNA clone (Cat# RC211494) using MegaTran 2.0 (Cat# [TT210002]).