

Product datasheet for **RC211482**

SLC23A2 (NM_203327) Human Tagged ORF Clone

Product data:

| | |
|---------------------------|--|
| Product Type: | Expression Plasmids |
| Product Name: | SLC23A2 (NM_203327) Human Tagged ORF Clone |
| Tag: | Myc-DDK |
| Symbol: | SLC23A2 |
| Synonyms: | NBTL1; SLC23A1; SVCT2; YSPL2 |
| Mammalian Cell Selection: | Neomycin |
| Vector: | pCMV6-Entry (PS100001) |
| E. coli Selection: | Kanamycin (25 ug/mL) |



[View online »](#)

ORF Nucleotide
Sequence:

>RC211482 representing NM_203327
Red=Cloning site Blue=ORF Green=Tags(s)

TTTTGTAATACGACTCACTATAGGGCGGCCGGAATTCGTCGACTGGATCCGGTACCGAGGAGATCTGCC
GCCGCGATCGCC

ATGATGGGTATTGGTAAGAATACCATCCAAATCAATGGAGGCTGGAAGTTCAACAGAAGGCAAATACG
AAGACGAGGCAAAGCACCCAGCTTTCTTCACTCTTCCGGTGGTGATAAATGGAGGCGCCACTCCAGCGG
TGAGCAGGACAATGAGGACACTGAGCTCATGGCGATCTACACTACGAAAAACGGCATTGCAGAAAAGAGC
TCTCTCGCTGAGACCCTGGATAGCACTGGCAGTCTGGACCCAGCGATCAGACATGATTATACCATAG
AAGATGTTCTCCCTGGTACCTGTGTATTTCTGGGGCTACAGCACTACCTGACATGCTTCAGCGGCAC
GATCGCAGTGCCCTTCTGTTGGCTGATGCCATGTGTGTGGGGTACGACCAGTGGGCCACCAGCCAGCTC
ATTGGGACCATTTCTTGTGTGGGAATCACTACTTTGCTACAGACAACGTTTGGATGCAGGTTACCCC
TGTTTCAGGCCAGTGCTTTTGCATTTTGGCCCTGCTCGAGCCATCCTGTCTTTAGATAAATGAAATG
TAACACCACAGATGTTTCAGTTGCAATGGAACAGCAGAGCTGTTGCACACAGAACACATCTGGTATCCC
CGGATCCGAGAGATCCAGGGGGCCATCATCATGTCCTCACTGATAGAAGTAGTCATCGGCCCTCTCGGCC
TGCCCTGGGGCTCTACTGAAGTACATCGGTCCCTTGACCATTACACCCACGGTGGCCCTAATTGGCCCTCTC
TGGTTTCCAGGCAGCGGGGAGAGAGCCGGAAGCACTGGGGCATTGCCATGCTGACAATATTCCTAGTA
TTACTGTTTTCTCAATACGCCAGAAAATGTTAAATTTCTCTCCCGATTTATAAATCCAAGAAAGGATGGA
CTGCGTACAAGTTACAGCTGTTCAAATGTTCCCTATCATCTGGCCATCCTGGTATCCTGGCTGCTCTG
CTTCATCTTACGGTGACAGATGCTTCCCTCCCGACAGCACAAAGTATGGCTTCTATGCTCGCACAGAT
GCCAGGCAAGGCGTGCTTCTGGTAGCCCGTGGTTAAGGTTCCATACCCATTTTCAGTGGGACTGCCCA
CCGTGTCTGCGGCCGGTGTCTCGGCATGCTCAGTGCCGTGGTGCAGCATCATCGAGTCTATTGGTGA
CTACTACGCTGTGCACGGCTGCTGTGCCACCCCCCATCCACGCAATAAACAGGGGAATTTTC
GTGGAAGGCCCTCTCTGTGTTCTTGATGGCATATTTGGTACTGGGAATGGCTCTACTTCATCCAGTCCCA
ACATTGGAGTTTTGGGAATTACAAAGGTCGGCAGCCGCCGCTGATACAGTGCGGAGCAGCCCTCATGCT
CGCTCTGGGCATGATCGGGAAGTTCAGCGCCCTTTTGGTCCCTTCCGGATCCTGTGCTGGGAGCCCTG
TTCTGCACGCTCTTTGGAATGATCACAGCTGTTGGCCTCTAACCTGCAGTTCATTGATTTAAATTTCTT
CCCGAACCTCTTTGTGCTTGGATTTTCGATCTTCTTTGGGCTCGTCTTCCAAGTTACCTCAGACAGAA
CCCTCTGGTACAGGGATAACAGGAATCGATCAAGTGTGAACGTCCTTCTCACAACGCTATGTTTGTA
GGGGCTGTGTGGCTTTATCCTGGATAACACCATCCAGGCACTCCAGAGGAAAGAGGAATCCGGAAT
GGAAGAAGGGTGTGGCAAAGGGAACAAATCACTCGACGGCATGGAGTCGTACAATTTGCCATTTGGCAT
GAACATTATAAAAAAATACAGATGCTTCAGCTACTTACCCATCAGCCAAACCTTTGTGGGCTACACATGG
AAAGGCCCTCAGGAAGAGCGACAACAGCCGGAGTTCAGATGAAGACTCCCAGGCCACGGGA

ACGCGTACGCGGCCGCTCGAGCAGAACTCATCTCAGAAGAGGATCTGGCAGCAAATGATATCCTGGATT
ACAAGGATGACGACGATAAGGTTTAA

Protein Sequence: >RC211482 representing NM_203327
 Red=Cloning site Green=Tags(s)

MMGIGKNTTSKSMEAGSSTEGKYEDEAKHPAFFTLPVVINGGATSSGEQDNEDELMAIYTTENGIAEKS
 SLAETLDSTGSLDPQRSDMIYTIEDVPPWYLCIFLGLQHLYTCFSGTIAVPFLLADAMCVGYDQWATSQ
 IGTIFFCVGITTLLQTTFGCRLPLFQASAFAPARAILSLDKWKCNTTDVSVANGTAELLHTEHIWYP
 RIREIQGAIIMSSLIEVVIGLLGLPGALLKYIGPLTITPTVALIGLSGFQAAGERAGKHWGIAMLTIFLV
 LLFSQYARNVKFPLPIYKSKKGWTAYKLQLFKMFPIILAILVSWLLCFIFTVTDVFPDSTKYGFYARTD
 ARQGVLLVAPWFKVPYPFQWGLPTVSAAGVIGMLSAVVASIIESIGDYYACARLSCAPPPPIHAINRGIF
 VEGLSCLVDGIFGTGNGSTSSSPNIGVLGITKVGSRRIQCGAALMLALGMIGKFSALFASLPDPVLGAL
 FCTLFGMITAVGLSNLQFIDLNSSRNLFVLGFSIFFGLVPSYLRQNPLVTGITGIDQVLNVLLTTAMFV
 GGCVAFILDNTIPGTPEERGIRKWKKGVGKGNKSLDGMESYNLPGMNIKKYRCFSYLPISPTFVGTYT
 KGLRKSDNSRSDSDSQATG

TRTRPLEQKLISEEDLAANDILDYKDDDDKV

Chromatograms: https://cdn.origene.com/chromatograms/mk6711_d01.zip

Restriction Sites: SgfI-MluI

Cloning Scheme:



ACCN: NM_203327

ORF Size: 1950 bp

OTI Disclaimer: Due to the inherent nature of this plasmid, standard methods to replicate additional amounts of DNA in E. coli are highly likely to result in mutations and/or rearrangements. Therefore, OriGene does not guarantee the capability to replicate this plasmid DNA. Additional amounts of DNA can be purchased from OriGene with batch-specific, full-sequence verification at a reduced cost. Please contact our customer care team at custsupport@origene.com or by calling 301.340.3188 option 3 for pricing and delivery.

The molecular sequence of this clone aligns with the gene accession number as a point of reference only. However, individual transcript sequences of the same gene can differ through naturally occurring variations (e.g. polymorphisms), each with its own valid existence. This clone is substantially in agreement with the reference, but a complete review of all prevailing variants is recommended prior to use. [More info](#)

OTI Annotation: This clone was engineered to express the complete ORF with an expression tag. Expression varies depending on the nature of the gene.

Components: The ORF clone is ion-exchange column purified and shipped in a 2D barcoded Matrix tube containing 10ug of transfection-ready, dried plasmid DNA (reconstitute with 100 ul of water).

Reconstitution Method:

1. Centrifuge at 5,000xg for 5min.
2. Carefully open the tube and add 100ul of sterile water to dissolve the DNA.
3. Close the tube and incubate for 10 minutes at room temperature.
4. Briefly vortex the tube and then do a quick spin (less than 5000xg) to concentrate the liquid at the bottom.
5. Store the suspended plasmid at -20°C. The DNA is stable for at least one year from date of shipping when stored at -20°C.

RefSeq: [NM_203327.1](#), [NP_976072.1](#)

RefSeq Size: 6971 bp

RefSeq ORF: 1953 bp

Locus ID: 9962

UniProt ID: [Q9UGH3](#)

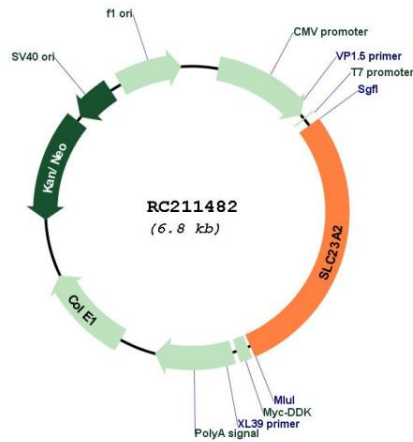
Cytogenetics: 20p13

Protein Families: Transmembrane

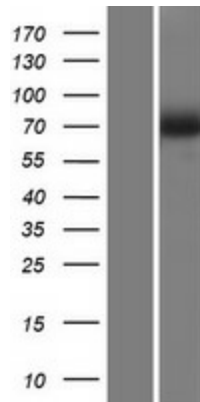
MW: 70.2 kDa

Gene Summary: The absorption of vitamin C into the body and its distribution to organs requires two sodium-dependent vitamin C transporters. This gene encodes one of the two required transporters and the encoded protein accounts for tissue-specific uptake of vitamin C. Previously, this gene had an official symbol of SLC23A1. [provided by RefSeq, Jul 2008]

Product images:



Circular map for RC211482



Western blot validation of overexpression lysate (Cat# [LY417506]) using anti-DDK antibody (Cat# [TA50011-100]). Left: Cell lysates from untransfected HEK293T cells; Right: Cell lysates from HEK293T cells transfected with [RC216776] using transfection reagent MegaTran 2.0 (Cat# [TT210002]).