

Product datasheet for **RC211477**

IL23 Receptor (IL23R) (NM_144701) Human Tagged ORF Clone

Product data:

Product Type:	Expression Plasmids
Product Name:	IL23 Receptor (IL23R) (NM_144701) Human Tagged ORF Clone
Tag:	Myc-DDK
Symbol:	IL23 Receptor
Mammalian Cell Selection:	Neomycin
Vector:	pCMV6-Entry (PS100001)
E. coli Selection:	Kanamycin (25 ug/mL)



[View online »](#)

ORF Nucleotide Sequence:

>RC211477 representing NM_144701
 Red=Cloning site Blue=ORF Green=Tags(s)

TTTTGTAATACGACTCACTATAGGGCGGCCGGAATTCGTCGACTGGATCCGGTACCGAGGAGATCTGCC
 GCC**CGGATCGCC**

ATGAATCAGGTCCTATTCAATGGGATGCAGTAATAGCCCTTTACATACTCTTCAGCTGGTGCATGGAG
 GAATTACAAATATAAACTGCTCTGGCCACATCTGGGTAGAACCAGCCACAATTTTTAAGATGGGTATGAA
 TATCTCTATATATTGCCAAGCAGCAATTAAGAACTGCCAACCAAGGAACTTCATTTTTATAAAAAATGGC
 ATCAAAGAAAGATTTCAAATCACAAAGGATTAATAAAACAACAGCTCGGCTTTGGTATAAAAACTTTCTGG
 AACACATGCTTCTATGTACTGCTGCTGAATGTCCAAACATTTTCAAGAGACACTGATATGTGGAAA
 AGACATTTCTTCTGGATATCCGCCAGATATTCCTGATGAAGTAACCTGTGCATTTATGAATATTCAGGC
 AACATGACTTGCACCTGGAATGCTGGGAAGCTCACCTACATAGACACAAAATACGTGGTACATGTGAAGA
 GTTTAGAGACAGAAGAAGAGCAACAGTATCTCACCTCAAGCTATATTAACATCTCCACTGATTCATTACA
 AGGTGGCAAGAAGTACTTGGTTTGGGTCCAAGCAGCAAACGCCTAGGCATGGAAGAGTCAAACAACCTG
 CAAATTCACCTGGATGATATAGTGATACCTTCTGCAGCCGTCATTTCCAGGGCTGAGACTATAAATGCTA
 CAGTGCCCAAGACCATAATTTATTGGGATAGTCAAACAACAAATGAAAAGGTTTCTGTGAAATGAGATA
 CAAGGCTACAACAACAACTTGGAAATGTTAAAGAATTTGACACCAATTTTACATATGTGCAACAGTCA
 GAATTCCTACTTGGAGCCAAACATTAAGTACGATTTTCAAGTGAGATGTCAAGAAACAGGCAAAAGGTACT
 GGCAGCCTTGGAGTTCACCGTTTTTTCATAAAACACCTGAAACAGTTCACCCAGGTACATCAAAGCATT
 CCAACATGACACATGGAATCTGGGCTAACAGTTGCTTCCATCTCTACAGGACCTTACTTCTGACAAC
 AGAGGAGACATTGGACTTTTATTGGGAATGATCGTCTTTGCTGTTATGTTGTCAATCTTTCTTTGATTG
 GGATATTTAACAGATCATTCCGAACTGGGATTAAGAAGAGATCTTATTGTTAATACCAAAGTGGCTTTA
 TGAAGATATTCCTAATATGAAAAACAGCAATGTTGTGAAAATGCTACAGGAAAATAGTGAACCTTATGAAT
 AATAATCCAGTGAGCAGGTCTATATGTTGATCCCATGATTACAGAGATAAAAAGAAATCTTCATCCAG
 AACACAAGCTACAGACTACAAGAAGGAGAATACAGGACCCCTGGAGACAAGAGACTACCCGCAAAACTC
 GCTATTCGACAATACTACAGTTGTATATATTCCTGATCTCAACACTGGATATAAACCCCAATTTCAAAT
 TTTCTGCCTGAGGGAAGCCATCTCAGCAATAATAATGAAATTAATCTTAACTTAAACCACCAGTTG
 ATTCCTTAGACTCAGGAAATAATCCAGGTTACAAAAGCATCCTAATTTTGTCTTTTCTGTTTCAAGTGT
 GAATTCCTAAGCAACACAATTTTCTTGAGAATTAAGCCTCATATTAATCAAGGAGAATGCAGTTCT
 CCTGACATACAAAACCTCAGTAGAGGAGAAACCACCATGCTTTTGGAAAATGATTACCCAGTGAACCTA
 TTCCAGAACAGACCTGCTTCTGATGAATTTGTCTCTGTTTGGGGATCGTGAATGAGGAGTTGCCATC
 TATTAATACTTATTTCCACAAAATATTTTGGAAAGCCACTTCAATAGGATTTCACTCTTGGAAAAG

ACGCGTACGCGGCCGCTCGAGCAGAACTCATCTCAGAAGAGGATCTGGCAGCAAATGATATCCTGGATT
 ACAAGGATGACGACGATAAGGTTTAA

Protein Sequence:

>RC211477 representing NM_144701
 Red=Cloning site Green=Tags(s)

MNQVTIQWDAVIALYILFSWCHGGITNINCSGHIWVEPATIFKMGMNISIYCQAAIKNCQPRKLHFYKNG
 IKERFQITRINKTTARLWYKNFLEPHASMYCTAECPKHFQETLICGKDISSGYPDPDPEVTCVIEYSG
 NMTCTWNAGKLTIDTKYVVHVKSLETEEEQQYL TSSYINISTDSLQGGKKYL VVWQAANALGMEESKQL
 QIHLDDIVIPSAAVISRAETINATVPKTIYWDSQTTIEKVSCEMRYKATTNQTWNVKEFDNFTYVQQS
 EFYLEPNIKYVFQVRCQETGKRYWQPWSSPFHKTPEVTPQVTSKAFQHDWNSGLTVASISTGHLTSDN
 RGDIGLLLGMIVFAVMSILSLIGIFNRSFRTGIKRRILLIPKWLIEDIPNMKNSNVVKMLQENSELMN
 NNSSEQVLYVDPMITEIKEIFIPEHKPTDYKENTGPLETRDYPQNSLFDNTTVVYIPDLNTGYKQPQISN
 FLPEGSHLSNNNEITSLTLKPPVDSLDSGNPRLQKHPNFAFSVSSVNSLSNTIFLGELESLILNQGECS
 PDIQNSVEEETMLLENDSPSETIPEQTLLPDEFVSLGIVNEELPSINTYFPQNILESHFNRIISLLEK

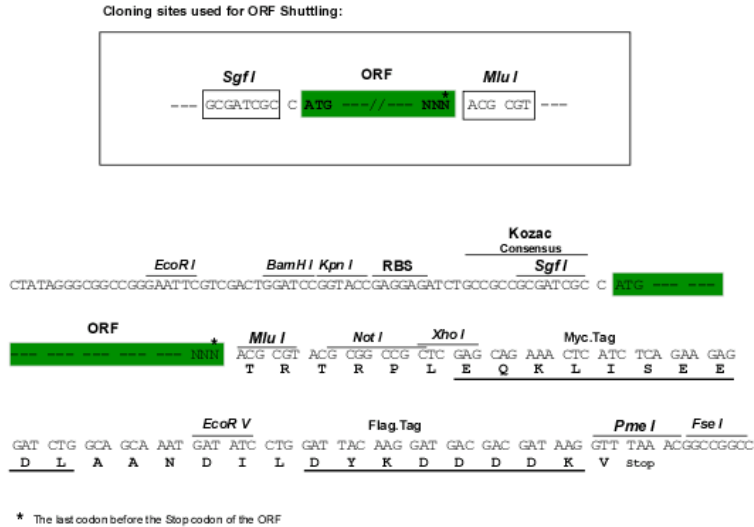
TRTRPLEQKLISEEDLAANDILDYKDDDDKV

Chromatograms:

https://cdn.origene.com/chromatograms/mk6200_b07.zip

Restriction Sites: SgfI-MluI

Cloning Scheme:



ACCN: NM_144701

ORF Size: 1887 bp

OTI Disclaimer: The molecular sequence of this clone aligns with the gene accession number as a point of reference only. However, individual transcript sequences of the same gene can differ through naturally occurring variations (e.g. polymorphisms), each with its own valid existence. This clone is substantially in agreement with the reference, but a complete review of all prevailing variants is recommended prior to use. [More info](#)

OTI Annotation: This clone was engineered to express the complete ORF with an expression tag. Expression varies depending on the nature of the gene.

Components: The ORF clone is ion-exchange column purified and shipped in a 2D barcoded Matrix tube containing 10ug of transfection-ready, dried plasmid DNA (reconstitute with 100 ul of water).

Reconstitution Method:

1. Centrifuge at 5,000xg for 5min.
2. Carefully open the tube and add 100ul of sterile water to dissolve the DNA.
3. Close the tube and incubate for 10 minutes at room temperature.
4. Briefly vortex the tube and then do a quick spin (less than 5000xg) to concentrate the liquid at the bottom.
5. Store the suspended plasmid at -20°C. The DNA is stable for at least one year from date of shipping when stored at -20°C.

RefSeq: [NM_144701.1](#)

RefSeq Size: 2826 bp

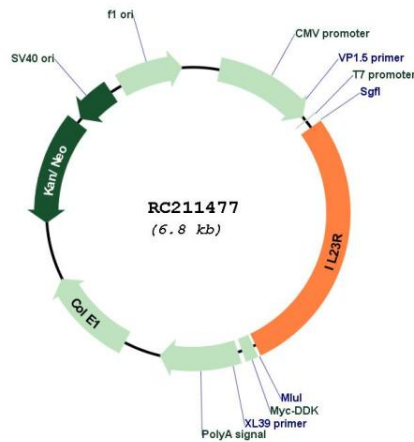
RefSeq ORF: 1890 bp

Locus ID: 149233

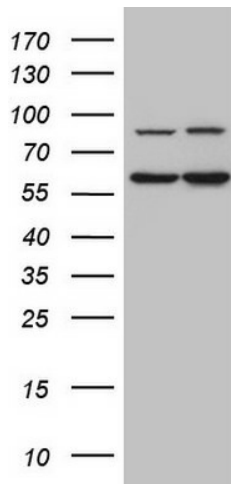
UniProt ID: [Q5VWK5](#)

Cytogenetics: 1p31.3
Protein Families: Druggable Genome, Transmembrane
Protein Pathways: Cytokine-cytokine receptor interaction, Jak-STAT signaling pathway
MW: 69 kDa
Gene Summary: The protein encoded by this gene is a subunit of the receptor for IL23A/IL23. This protein pairs with the receptor molecule IL12RB1/IL12Rbeta1, and both are required for IL23A signaling. This protein associates constitutively with Janus kinase 2 (JAK2), and also binds to transcription activator STAT3 in a ligand-dependent manner. [provided by RefSeq, Jul 2008]

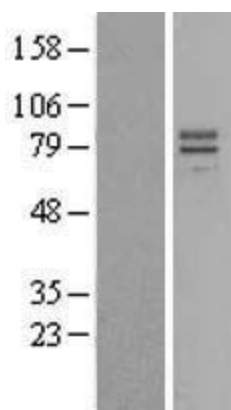
Product images:



Circular map for RC211477



HEK293T cells were transfected with the pCMV6-ENTRY control (Cat# [PS100001], Left lane) or pCMV6-ENTRY IL23R (Cat# RC211477, Right lane) cDNA for 48 hrs and lysed. Equivalent amounts of cell lysates (5 ug per lane) were separated by SDS-PAGE and immunoblotted with anti-IL23R antibody (Cat# [TA807494]). Positive lysates [LY403404] (100ug) and [LC403404] (20ug) can be purchased separately from OriGene.



Western blot validation of overexpression lysate (Cat# [LY403404]) using anti-DDK antibody (Cat# [TA50011-100]). Left: Cell lysates from untransfected HEK293T cells; Right: Cell lysates from HEK293T cells transfected with RC211477 using transfection reagent MegaTran 2.0 (Cat# [TT210002]).