

## Product datasheet for **RC211476**

### **TMPRSS3 (NM\_032405) Human Tagged ORF Clone**

#### Product data:

Product Type:	Expression Plasmids
Product Name:	TMPRSS3 (NM_032405) Human Tagged ORF Clone
Tag:	Myc-DDK
Symbol:	TMPRSS3
Synonyms:	DFNB8; DFNB10; ECHOS1; TADG12
Mammalian Cell Selection:	Neomycin
Vector:	pCMV6-Entry (PS100001)
E. coli Selection:	Kanamycin (25 ug/mL)
ORF Nucleotide Sequence:	>RC211476 representing NM_032405 Red=Cloning site Blue=ORF Green=Tags(s)

TTTTGTAATACGACTCACTATAGGGCGGCCGGAATTCGTCGACTGGATCCGGTACCGAGGAGATCTGCC  
GCC**CGATCGCC**

ATGGGGGAAAAATGATCCGCCTGCTGTTGAAGCCCCCTTCTCATTCCGATCGCTTTTTGGCCTTGATGATT  
TGAAAATAAGTCCTGTTGCACCAGATGCAGATGCTGTTGCTGCACAGATCCTGTCAGTCTGCCATTGAA  
GTTTTTCCAATCATCGTCATTGGGATCATTGCATTGATATTAGCACTGGCCATTGGTCTGGGCATCCAC  
TTCGACTGCTCAGGAAGTACAGATGTCGCTCATCCTTTAAGTGTATCGAGCTGATAGCTCGATGTGACG  
GAGTCTCGGATTGCAAAGACGGGGAGGACGAGTACCGCTGTGTCGGGTGGTGGTCCAGAAATGCCGTGCT  
CCAGGTGTTACAGCTGCTTCGTGGAAGACCATGTGCTCCGATGACTGGAAGGGTCACTACCCAAATGTT  
GCCTGTGCCAACTGGGTTTCCCAAGCTATGTGAGTTCAGATAACCTCAGAGTGAGCTCGCTGGAGGGGC  
AGTTCCGGGAGGAGTTTGTGTCATCGATCACCTCTTGCCAGATGACAAGGTGACTGCATTACACCACTC  
AGTATATGTGAGGGAGGGATGTGCCTCTGGCCACGTGGTTACCTTGCAAGTGCACAGCCTGTGGTCATAGA  
AGGGGCTACAGCTCACGCATCGTGGTGGAAACATGTCTTGCTCTCGCAGTGGCCCTGGCAGGCCAGCC  
TTCAGTCCAGGGCTACCACCTGTGCGGGGCTCTGTATCACGCCCTGTGGATCATCACTGCTGCACA  
CTGTGTTTATGACTTGTACCTCCCAAGTATGGACCATCCAGGTGGGTCTAGTTTCCCTGTTGGACAAT  
CCAGCCCATCCCACTTGGTGGAGAAGATTGTCTACCACAGCAAGTACAAGCCAAAGAGGCTGGCAATG  
ACATCGCCCTTATGAAGCTGGCCGGCCACTCAGGTTCAATGGTACATCTGGGTCTCTATGTGTTCTGCG  
AGCTCTTCTTTGTTTCAAGAGGATTTGCAATTGCTCATTGAAGCATTCTTA

**ACGCGT**ACGCGGCCGCTCGAGCAGAACTCATCTCAGAAGAGGATCTGGCAGCAAATGATATCCTGGATT  
ACAAGGATGACGACGATAAGGTTTAA

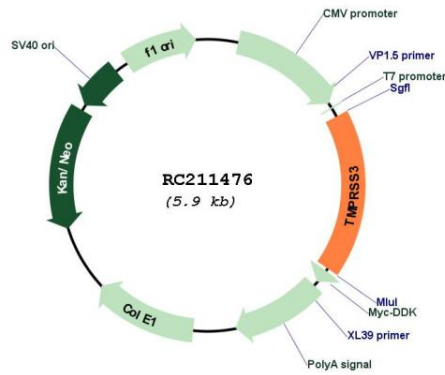


[View online »](#)

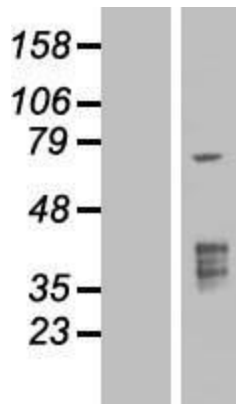


<b>Reconstitution Method:</b>	<ol style="list-style-type: none"><li>1. Centrifuge at 5,000xg for 5min.</li><li>2. Carefully open the tube and add 100ul of sterile water to dissolve the DNA.</li><li>3. Close the tube and incubate for 10 minutes at room temperature.</li><li>4. Briefly vortex the tube and then do a quick spin (less than 5000xg) to concentrate the liquid at the bottom.</li><li>5. Store the suspended plasmid at -20°C. The DNA is stable for at least one year from date of shipping when stored at -20°C.</li></ol>
<b>RefSeq:</b>	<a href="#">NM_032405.1</a> , <a href="#">NP_115781.1</a>
<b>RefSeq Size:</b>	1359 bp
<b>RefSeq ORF:</b>	1035 bp
<b>Locus ID:</b>	64699
<b>UniProt ID:</b>	<a href="#">P57727</a>
<b>Cytogenetics:</b>	21q22.3
<b>Domains:</b>	SR, Tryp_SPc, ldl_recept_a
<b>Protein Families:</b>	Druggable Genome, Protease, Transmembrane
<b>MW:</b>	37.3 kDa
<b>Gene Summary:</b>	<p>This gene encodes a protein that belongs to the serine protease family. The encoded protein contains a serine protease domain, a transmembrane domain, an LDL receptor-like domain, and a scavenger receptor cysteine-rich domain. Serine proteases are known to be involved in a variety of biological processes, whose malfunction often leads to human diseases and disorders. This gene was identified by its association with both congenital and childhood onset autosomal recessive deafness. This gene is expressed in fetal cochlea and many other tissues, and is thought to be involved in the development and maintenance of the inner ear or the contents of the perilymph and endolymph. This gene was also identified as a tumor-associated gene that is overexpressed in ovarian tumors. Alternatively spliced transcript variants have been described. [provided by RefSeq, Jan 2012]</p>

Product images:



Circular map for RC211476



Western blot validation of overexpression lysate (Cat# [LY410146]) using anti-DDK antibody (Cat# [TA50011-100]). Left: Cell lysates from untransfected HEK293T cells; Right: Cell lysates from HEK293T cells transfected with RC211476 using transfection reagent MegaTran 2.0 (Cat# [TT210002]).