

## Product datasheet for RC211470

### CLEC4C (NM\_203503) Human Tagged ORF Clone

#### Product data:

**Product Type:** Expression Plasmids  
**Product Name:** CLEC4C (NM\_203503) Human Tagged ORF Clone  
**Tag:** Myc-DDK  
**Symbol:** CLEC4C  
**Synonyms:** BDCA-2; BDCA2; CD303; CLECSF7; CLECSF11; DLEC; HECL; PRO34150  
**Mammalian Cell Selection:** Neomycin  
**Vector:** pCMV6-Entry (PS100001)  
**E. coli Selection:** Kanamycin (25 ug/mL)  
**ORF Nucleotide Sequence:** >RC211470 representing NM\_203503  
Red=Cloning site Blue=ORF Green=Tags(s)

TTTTGTAATACGACTCACTATAGGGCGCCGGGAATTCGTCGACTGGATCCGGTACCGAGGAGATCTGCC  
GCC**CGATCGCC**

ATGGTGCCTGAAGAAGAGCCTCAAGACCGAGTGCCTCACAATTTTATGTATAGCAAACTGTCAAGAGGC  
TGTCCAAGTTACGAGAGTATCAACAGTATCATCCAAGCCTGACCTGCGTCATGGAAGGAAAGGACATAGA  
AGATTGGAGCTGCTGCCAACCCCTTGGACTTCATTTAGTCTAGTTGCTACTTTATTTCTACTGGGATG  
CAATCTTGGACTAAGAGTCAAAGAAGTGTCTGTGATGGGGCTGATCTGGTGGTATCAACACCAGGG  
AAGAACAGGATTCATCATTGAGAACTGTTCTGTGATGGGGCTGATCTGGTGGTATCAACACCAGGG  
GGTTCGGCGACATTGGCAATGGGTTGACCAGACACCATACAATGAAAATGCACATTCTGGCACTCAGGT  
GAACCCAATAACCTTGATGAGCGTTGTGCGATAATAAATTTCCGTTCTTCAAGAAGATGGGGCTGGAATG  
ACATTCATCTGTCATGTACCTCAGAAGTCAATTTGCAAGATGAAGAAGATCTACATA

**ACGCGT**ACGCGGCCGCTCGAGCAGAACTCATCTCAGAAGAGGATCTGGCAGCAATGATATCCTGGATT  
ACAAGGATGACGACGATAAGGTTTAA

**Protein Sequence:** >RC211470 representing NM\_203503  
Red=Cloning site Green=Tags(s)  
MVPEEPPQDRVPHNFMYSKTVKRLSKLREYQQYHPSLTCVMEGKDIEDWSCCPTPWTFSQSSCYFISTGM  
QSWTKSQKNCVSMGADLVVINTREEQDFIIQNLKRNSYFLGLSDPGRRHWQWVDQTPYNENVTFWHSG  
EPNLLDERCAIINFRSSEEWGNDIHCHVPQKSICKMKKIYI

**TRTRPLEQKLISEEDLAANDILDYKDDDDKV**

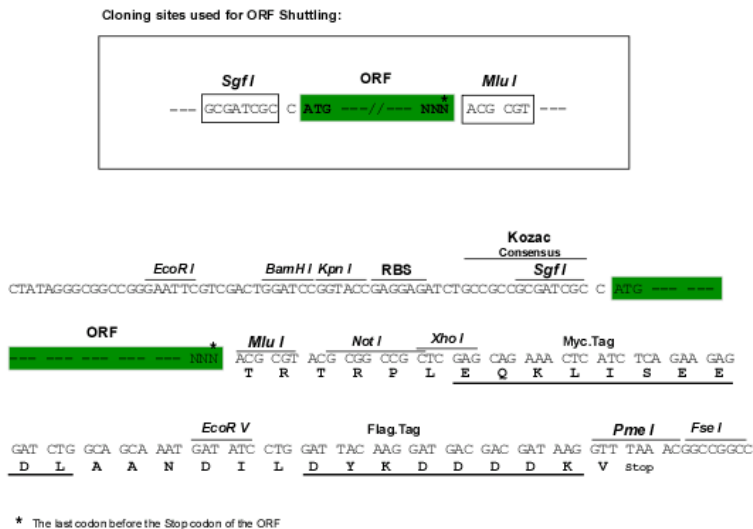
**Chromatograms:** [https://cdn.origene.com/chromatograms/ja1456\\_a06.zip](https://cdn.origene.com/chromatograms/ja1456_a06.zip)



[View online »](#)

Restriction Sites: SgfI-MluI

Cloning Scheme:



ACCN: NM\_203503

ORF Size: 546 bp

OTI Disclaimer: The molecular sequence of this clone aligns with the gene accession number as a point of reference only. However, individual transcript sequences of the same gene can differ through naturally occurring variations (e.g. polymorphisms), each with its own valid existence. This clone is substantially in agreement with the reference, but a complete review of all prevailing variants is recommended prior to use. [More info](#)

OTI Annotation: This clone was engineered to express the complete ORF with an expression tag. Expression varies depending on the nature of the gene.

Components: The ORF clone is ion-exchange column purified and shipped in a 2D barcoded Matrix tube containing 10ug of transfection-ready, dried plasmid DNA (reconstitute with 100 ul of water).

Reconstitution Method:

1. Centrifuge at 5,000xg for 5min.
2. Carefully open the tube and add 100ul of sterile water to dissolve the DNA.
3. Close the tube and incubate for 10 minutes at room temperature.
4. Briefly vortex the tube and then do a quick spin (less than 5000xg) to concentrate the liquid at the bottom.
5. Store the suspended plasmid at -20°C. The DNA is stable for at least one year from date of shipping when stored at -20°C.

RefSeq: [NM\\_203503.2](#)

RefSeq Size: 1221 bp

RefSeq ORF: 549 bp

Locus ID: 170482

UniProt ID: [Q8WTT0](#)

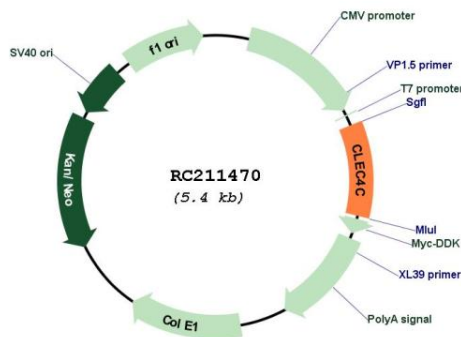
**Cytogenetics:** 12p13.31

**Protein Families:** Druggable Genome, Transmembrane

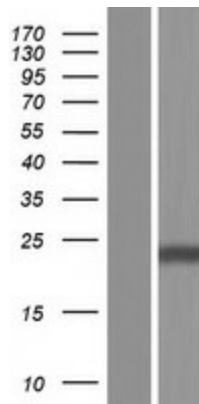
**MW:** 21.3 kDa

**Gene Summary:** This gene encodes a member of the C-type lectin/C-type lectin-like domain (CTL/CTLD) superfamily. Members of this family share a common protein fold and have diverse functions, such as cell adhesion, cell-cell signalling, glycoprotein turnover, and roles in inflammation and immune response. The encoded type 2 transmembrane protein may play a role in dendritic cell function. Two transcript variants encoding distinct isoforms have been identified for this gene. [provided by RefSeq, Jul 2008]

**Product images:**



Circular map for RC211470



Western blot validation of overexpression lysate (Cat# [LY404251]) using anti-DDK antibody (Cat# [TA50011-100]). Left: Cell lysates from untransfected HEK293T cells; Right: Cell lysates from HEK293T cells transfected with RC211470 using transfection reagent MegaTran 2.0 (Cat# [TT210002]).