

Product datasheet for **RC211468**

DCAF17 (NM_025000) Human Tagged ORF Clone

Product data:

Product Type:	Expression Plasmids
Product Name:	DCAF17 (NM_025000) Human Tagged ORF Clone
Tag:	Myc-DDK
Symbol:	DCAF17
Synonyms:	C2orf37; C20orf37
Mammalian Cell Selection:	Neomycin
Vector:	pCMV6-Entry (PS100001)
E. coli Selection:	Kanamycin (25 ug/mL)



[View online »](#)

ORF Nucleotide Sequence:

>RC211468 representing NM_025000
 Red=Cloning site Blue=ORF Green=Tags(s)

TTTTGTAATACGACTCACTATAGGGCGGCCGGAATTCGTCGACTGGATCCGGTACCGAGGAGATCTGCC
 GCC**CGGATCGCC**

ATGGGCCCGACCCGGAAGCCCAACGTGTGCAGCCGGCTGAGTCGCCGGGCGCTGGGCTGCTTCTCGCGCG
 ACGCAGGCGTGGTGCAGAGGACCAACCTGGGCATCCTGCGGGCGCTGGTGTGCCAGGAAAGTACTAAATT
 TAAGAATGTCTGGACAACCTATTCCAGGTCACCTATAGCCTATGAGAGAGGAAGAATATATTTTGACAAT
 TATCGGCGCTGTGTGAGCAGTGTGCATCTGAGCCAAGAAAACCTTATGAAATGCCAAAATGTTCCAAAAT
 CAGAAAAATAGAGGATGCTTTATTATGGGAATGCCCAGTGGGAGATATACTTCCCAATTCATCAGATTA
 TAAGTCTCACTCATAGCACTGACTGCTCATAATTGGCTACTTCGTATATCAGCAACTACGGAAAAATC
 CTTGAGAAAAATATCTTGCACCTATTGCAAATTCAGATACTTGAGCTGGGACTCTCAAGAAGTCA
 TTGCAGTTAAGTCAGCTCAGAACAGAGGCTCAGCAGTGGCCCGCAGGCAGGCATTCAACAACATGTTTT
 GCTGTACCTTGCAGTGTCCGAGTCTACCTTTTTCACTTGTAGGGATTCTAGAGATCAACAAAAAGATT
 TTTGGGAACGTTACAGATGCTACCTTGTCTCATGGAATACTGATTGTGATGTACAGCTCAGGACTGGTCA
 GACTCTATAGCTTCCAAACCATCGCTGAACAGTTCATGCAACAGAAAACCTGACTTAGGGTGTGCATGCAG
 ATGGGGTGGGACTACTGGAACGTGAGGAGAGGCTCCTTTTGGCATTTCCTTGAATATTAATAACACAGAC
 ATGCCACCACTGCTTTTGGAGTGTATCCCTGGAGAAATGCTTTTCAGATTGGAGGCCATCCTTGGCACT
 ACATCGTCACACCTAATAAGAAGAAACAGAAAGGAGTTTTCCATATTTGTGCCCTAAAAGACAATTCCTT
 GGCAAAAAATGGGATCCAAGAAATGGATTGTTGTTCTCTAGAATCTGACTGGATCTATTTCCATCCTGAT
 GCTTCTGGTAGAATAATACATGTTGGTCCAATCAAGTCAAAGTTTTGAAGCTAACTGAAATAGAAAAATA
 ATAGTTCTCAGCATCAGATCTCTGAAGATTTTGTCAATTTTGCCCAACAGGGAGAACCATAAAAAATGAAAA
 TGTAAGTCTGTTACAGCTTCTGGACGGTGGTAAAAAAAAGTTTTAACCTTCTGGATGATGACCCAGAA
 CAAGAGACTTTCAAAATTGTGGACTATGAAGATGAGTTAGATTTGCTTTCTGTGGTAGCTGTTACTCAAA
 TAGATGCTGAAGGAAAAGCTCACCTGGATTTCCACTGTAATGAATATGGAACCTTACTTAAAAGCATTCC
 ACTAGTGGAGTCATGGGATGTGACATATAGCCATGAAGTCTACTTTGACAGAGACTTGGTGTACACATA
 GAGCAGAAACCAACAGAGTCTTCAGCTGCTATGTTTACCAGATGATATGTGACTGGGGAAGAAGAAG
 AAACCATAAACAGAAGCTGT

ACGCGTACGCGGCCGCTCGAGCAGAAACTCATCTCAGAAGAGGATCTGGCAGCAAATGATATCCTGGATT
 ACAAGGATGACGACGATAAGGTTTAA

Protein Sequence:

>RC211468 representing NM_025000
 Red=Cloning site Green=Tags(s)

MGPTRKPNVCSRLSRRALGCFSRDAGVVRNLGILRALVCQESTKFKNVWTTSHRSPIAYERGRIYFDN
 YRRCVSSVASEPRKLYEMPKCSKSEKIEDALLWECVGDILPNSSDYKSSLIALTAHNWLRLISATTGKI
 LEKIYLYAPYCKFRYLSDWTPQEVIAVKSQNRGSAVARQAGIQQHVLVYLAVFRVLPFSLVILEINKKI
 FGNVTDATLSHGILIVMYSSGLVRLYSFQTIAEQFMQQKLDLGCACRWGGTTGTVGEAPFGIPCNIKITD
 MPPLLFEVSSLENAFQIGGHPWHYIVTPNKKKQKGVFHICALKDNLSAKNGIQEMDCCSLESDWIYFHPD
 ASGRIIHVGNPQVKVLKTEIENSSQHQISEDFVILANRENHKNENVLTVTASGRVVKSFNLLDDDDPE
 QETFKIVDYEDELDLLSVAVTQIDAEGKAHLDFHCNEYGTLLKSIPLVESWDVTYSHEVYFDRDLVLIH
 EQKPNRVFSCYVYQMICDTGEEETINRSC

TRTRPLEQKLISEEDLAANDILDYKDDDDKV

Chromatograms:

https://cdn.origene.com/chromatograms/mk8025_g02.zip

Restriction Sites:

Sgfl-Mlul

Cloning Scheme:


ACCN: NM_025000

ORF Size: 1560 bp

OTI Disclaimer: The molecular sequence of this clone aligns with the gene accession number as a point of reference only. However, individual transcript sequences of the same gene can differ through naturally occurring variations (e.g. polymorphisms), each with its own valid existence. This clone is substantially in agreement with the reference, but a complete review of all prevailing variants is recommended prior to use. [More info](#)

OTI Annotation: This clone was engineered to express the complete ORF with an expression tag. Expression varies depending on the nature of the gene.

Components: The ORF clone is ion-exchange column purified and shipped in a 2D barcoded Matrix tube containing 10ug of transfection-ready, dried plasmid DNA (reconstitute with 100 ul of water).

- Reconstitution Method:**
1. Centrifuge at 5,000xg for 5min.
 2. Carefully open the tube and add 100ul of sterile water to dissolve the DNA.
 3. Close the tube and incubate for 10 minutes at room temperature.
 4. Briefly vortex the tube and then do a quick spin (less than 5000xg) to concentrate the liquid at the bottom.
 5. Store the suspended plasmid at -20°C. The DNA is stable for at least one year from date of shipping when stored at -20°C.

RefSeq: [NM_025000.4](#)

RefSeq Size: 5744 bp

RefSeq ORF: 1563 bp

Locus ID: 80067

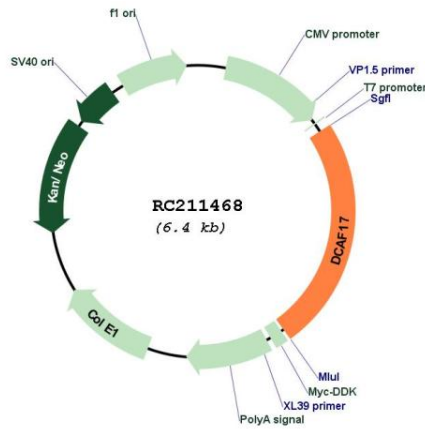
UniProt ID: [Q5H9S7](#)

Cytogenetics: 2q31.1

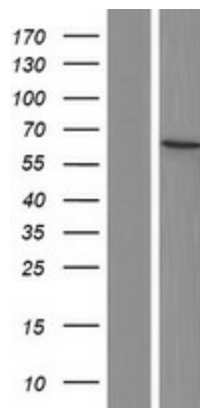
MW: 58.6 kDa

Gene Summary: This gene encodes a nuclear transmembrane protein that associates with cullin 4A/damaged DNA binding protein 1 ubiquitin ligase complex. Mutations in this gene are associated with Woodhouse-Sakati syndrome. Alternate splicing results in multiple transcript variants. [provided by RefSeq, Sep 2009]

Product images:



Circular map for RC211468



Western blot validation of overexpression lysate (Cat# [LY410912]) using anti-DDK antibody (Cat# [TA50011-100]). Left: Cell lysates from untransfected HEK293T cells; Right: Cell lysates from HEK293T cells transfected with RC211468 using transfection reagent MegaTran 2.0 (Cat# [TT210002]).