

Product datasheet for RC211458

DTX3 (NM_178502) Human Tagged ORF Clone

Product data:

| | |
|---------------------------|---|
| Product Type: | Expression Plasmids |
| Product Name: | DTX3 (NM_178502) Human Tagged ORF Clone |
| Tag: | Myc-DDK |
| Symbol: | DTX3 |
| Synonyms: | deltex3; RNF154 |
| Mammalian Cell Selection: | Neomycin |
| Vector: | pCMV6-Entry (PS100001) |
| E. coli Selection: | Kanamycin (25 ug/mL) |
| ORF Nucleotide Sequence: | >RC211458 representing NM_178502 Red=Cloning site Blue=ORF Green=Tags(s) |

TTTTGTAATACGACTCACTATAGGGCGCCGGGAATTCGTCGACTGGATCCGGTACCGAGGAGATCTGCC
GCC**CGATCGCC**

ATGTCGTTTCGTCCTGTCCAGAATGGCAGCCTGTGGAGGCACCTGCAAGAACAAAGTACTGTGTCCAAGC
CCGTGTGGGACTTCTGAGCAAAGAGACCCAGCCGGCTGGCCCGGCTTCGGGAGGAGCACCGTGTGTC
CATCCTCATAGATGGCGAGACTTCTGACATCTATGTTCTCCAGCTTCCACAGGGTCTCCCCCGGCC
CCTCCAAATGGGCTCTACCTAGCCCGGAAGGCTCTCAAGGGGCTGCTAAAAGAGGCAGAGAAAGAGCTGA
AGAAAGCTCAGAGGCAGGGGAGCTGATGGGCTGCCTGGCTCTGGGGGTGGAGGGGAGCACCTGAGAT
GCACCGCGCAGGCCACCCCTCTCCGAGCAGCCCACTTCTGCCCCAGGAGCTCGGGGCTCCCCCT
CCTCCTCCCCCTGCCCCACCTTCTCCTCGCCTTCGGGAGGAGCAGAAGAGCAGGAGAGCACCT
GCCCCATCTGTCTGGGGGAGATCCAGAATGCCAAGACATTGGAGAAGTCCCGGCATTCTTCTGCGAGGG
CTGCATCACCCGGGCTCTGCAGGTGAAAAGGCCTGCCCATGTGCGGCCGCTTCTATGGGAGCTGGT
GGCAACCAGCCCCAGAATGGCGGATGCTGGTCTTAAGGACGCCACCTCCTACTGCCAGCTATGAGA
AGTACGGCACCATTGTATCCAGTACGTCTCCCGCCGGTGTCCAGGGGCTGAACACCCAAACCCAGG
AGTTCGGTATCCTGGCACCACACGGGTGGCCTACCTCCCGGACTGCCCTGAGGGCAACAAGGTGCTGACC
CTGTTCCGCAAGGCGTTTGACCAGCGTCTACCTTCACTATCGGCACGTCATGACCACAGGGAGCCGA
ATGTCATCACCTGGAACGACATCCACCACAAGACCAGCTGCACAGGGGGACCCAGCTGTTGGGTACCC
AGACCCACCTACCTGACCCGGGTGCAAGAGGAGCTGAGAGCGAAGGGTATCACAGATGAC

ACGCGTACGCGGCCGCTCGAGCAGAACTCATCTCAGAAGAGGATCTGGCAGCAAATGATATCCTGGATT
ACAAGGATGACGACGATAAGGTTTAA



[View online »](#)

Protein Sequence: >RC211458 representing NM_178502
 Red=Cloning site Green=Tags(s)

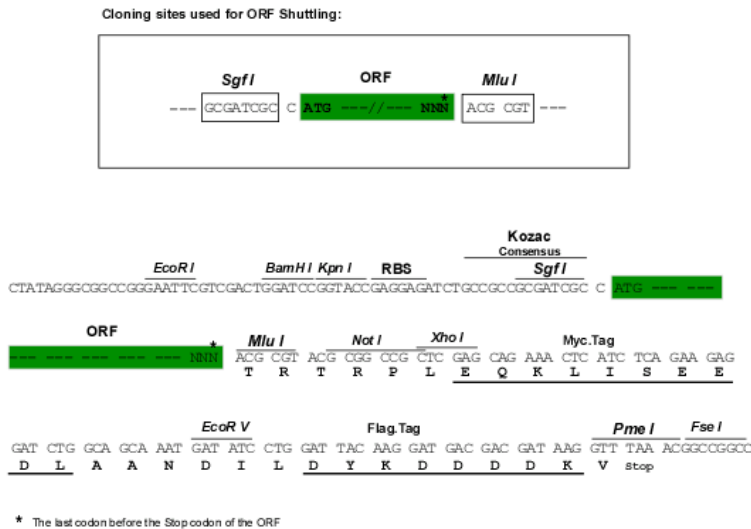
MSFVLSRMAACGGTCKNKVTVSKPVWDFLSKETPARLARLREEHRVSILIDGETSDIYVLQLSPQGPPPA
 PPNGLYLARKALKGLLKEAEKELKKAQRQELMGCLALGGGGEHPMHRAGPPPLRAAPLLPPGARGLPP
 PPPPLPPPLPRLREEAEQESTCPICLGEIQNAKTLEKCRHSFCEGCITRALQVKKACPMCGRFYGLV
 GNQPQNGRMLVSKDATLLLLPSYEKYGTVIYQYVPPGVQGAHPNPGVRYPGTTRVAYLPDCPEGNKVLT
 LFRKAFDQRLFTIGTSMITGRPNVITWNDIHHKTSCTGGPQLFGYPDPTYLTRVQEELRAKGITDD

TRTRPLEQKLISEEDLAANDILDYKDDDDKV

Chromatograms: https://cdn.origene.com/chromatograms/mk6207_e05.zip

Restriction Sites: SgfI-MluI

Cloning Scheme:



ACCN: NM_178502

ORF Size: 1041 bp

OTI Disclaimer: The molecular sequence of this clone aligns with the gene accession number as a point of reference only. However, individual transcript sequences of the same gene can differ through naturally occurring variations (e.g. polymorphisms), each with its own valid existence. This clone is substantially in agreement with the reference, but a complete review of all prevailing variants is recommended prior to use. [More info](#)

OTI Annotation: This clone was engineered to express the complete ORF with an expression tag. Expression varies depending on the nature of the gene.

Components: The ORF clone is ion-exchange column purified and shipped in a 2D barcoded Matrix tube containing 10ug of transfection-ready, dried plasmid DNA (reconstitute with 100 ul of water).

Reconstitution Method:

1. Centrifuge at 5,000xg for 5min.
2. Carefully open the tube and add 100ul of sterile water to dissolve the DNA.
3. Close the tube and incubate for 10 minutes at room temperature.
4. Briefly vortex the tube and then do a quick spin (less than 5000xg) to concentrate the liquid at the bottom.
5. Store the suspended plasmid at -20°C. The DNA is stable for at least one year from date of shipping when stored at -20°C.

RefSeq: [NM_178502.4](#)

RefSeq Size: 2029 bp

RefSeq ORF: 1044 bp

Locus ID: 196403

UniProt ID: [Q8N9I9](#)

Cytogenetics: 12q13.3

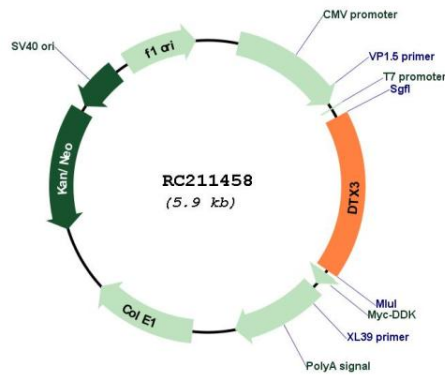
Protein Families: Druggable Genome

Protein Pathways: Notch signaling pathway

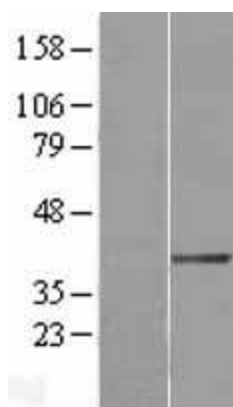
MW: 37.8 kDa

Gene Summary: DTX3 functions as an E3 ubiquitin ligase (Takeyama et al., 2003 [PubMed 12670957]). [supplied by OMIM, Nov 2009]

Product images:



Circular map for RC211458



Western blot validation of overexpression lysate (Cat# [LY405894]) using anti-DDK antibody (Cat# [TA50011-100]). Left: Cell lysates from untransfected HEK293T cells; Right: Cell lysates from HEK293T cells transfected with RC211458 using transfection reagent MegaTran 2.0 (Cat# [TT210002]).