

Product datasheet for **RC211456**

TTC23 (NM_022905) Human Tagged ORF Clone

Product data:

Product Type:	Expression Plasmids
Product Name:	TTC23 (NM_022905) Human Tagged ORF Clone
Tag:	Myc-DDK
Symbol:	TTC23
Synonyms:	HCC-8
Mammalian Cell Selection:	Neomycin
Vector:	pCMV6-Entry (PS100001)
E. coli Selection:	Kanamycin (25 ug/mL)



[View online »](#)

ORF Nucleotide Sequence:

>RC211456 representing NM_022905
 Red=Cloning site Blue=ORF Green=Tags(s)

TTTTGTAATACGACTCACTATAGGGCGGCCGGAATTCGTCGACTGGATCCGGTACCGAGGAGATCTGCC
 GCC**CGCATCGCC**

ATGCAAGAAATCACAGAAACCCACATATCCAACCACCTAGATGAAGTTGTTGCTGCTGTTAGCATCACTC
 ATAGAAAAGAAATTCCAAAACAAGCTGCTTCAGACAGCACTATTCCAGCCTCCTCGAGAGAAACTCCACCT
 CTGTGAAGAGAAAAGCAAAGTCTATTCCAACAGTCATGAGTACAAAACAGGCCGCTCCATGAGCTTGTGCGT
 TGCGTAGCACTGACAAGAATTTGCTATGGAGACTCACATTGAAAAGTACAGAGGCACATGTTAATCTGG
 CTCAAGGCTACCTCCAGCTGAAAGGACTGCTACTGCAAGCAAAAACAACATGCAGAAAAAGCCAGACAAAT
 CCTCGCCAACTCCATTGTGCCTCCCTATAGTGAGAATACAGATGTTTTCAAGTTTTCCATTGAGCTTTTC
 CATACCATGGGCAGAGCTTTACTCTCCCTTCAAAAATTTAAGGAAGCTGCAGAGAATTTGACAAAAGCAG
 AGAGACTTTCAAAGGAGCTGCTACAATGTGAAGAATTATAAAGGAAGAATGGATAGAAAATTGAAGCAGC
 GATCAGATTATCATTGTCACAGGTGATCAAGGTCAGAAGAAGTCAAAGAAGCTTTGTCCCACTATCAA
 GCAGCTTTGGAATATGTTGAGATCAGTAAAGGTGAAACAAGTCGTGAGTGTGTACCCATATTGAGAGAAT
 TAGCAGGTGTAGAGCAAGCCCTGGGACTCCACGATGTATCCATCAACCACCTTCTCCAGGCACATCTCAT
 CATCCTGAGTAGAAGCCCTCTCAAGTGGAGGCAGCAGACTCGGCACACATCGTCGCCCATGCTGCTGTC
 GCTTCAGGGAGACACGAGCACCATGATGTAGCTGAGCAGTATTTTCAAGAGAGCATGGCTCATCTTAAGG
 ATCTGAAGGGATGGGAAGAACCAATTTCTTTCAATTCAAGTGAATTTTGCCATTTTCTACAAATGAC
 TGGAAAAAGAGAGACAACCTCGATCCTGAGAGAGTCCCTGGAAGCCAAAGTGAAGCATTGCGCAT
 TTCAGTCCCGAGGTGGCAGAGACATACCGGCTCCTGGGAGGAGCAGACCTGGCGCAGGGGAACACAGTG
 GGGCCCGCAAGAACTGAAGAAGTGTCTCCAGATCCAGACCCCTTATATGGACCCAGGCAAAAAGGAC
 TCTGGCCACCCAGCAGGCCATGGGCATGCTGTCCACGGCCCAAGGTTGCTTCAAGCCAAAGGCAGGCA
 TCAAAAAGCCAAAGTGGCCTTCTGCACCAGCATCCCTCAGGACACCCTGCTGGGAAGGCCCGCCCGCA
 CAACAGCAGAC

ACGCGTACGCGGCCGCTCGAGCAGAACTCATCTCAGAAGAGGATCTGGCAGCAATGATATCCTGGATT
 ACAAGGATGACGACGATAAGGTTTAA

Protein Sequence:

>RC211456 representing NM_022905
 Red=Cloning site Green=Tags(s)

MQESQETHISNHLDEVVAVSITHRKKFQNKLLQTALFQPPREKLHLCEEKAKSYSNSHEYKQAVHELVR
 CVALTRICYGDSHWKLAEAHVNLAQGYLQLKGLSLQAKQHAEKARQILANSIVPPYSENTDVFKFSIELF
 HTMGRALLSLQKFKEAENLTKAERLSKELLQCGRIIKEEWIEIEARIRLSFAQVYQGQKSKEALSHYQ
 AALEYVEISKGETSRECVPIILRELAGEVALGLHDVSIHFLQAHLIILSRSPSQVEAADS AHIVAAAV
 ASGRHEHHDVAEQYFQESMAHLKDESEGMGRKFLSIQDEFCHFLQMTGQKERATSILRESLEAKVEAFGD
 FSPEVAETRYRLLGGADLAQGNHSGARKLKKLQIQTLTYGPDQRRLATQQAMGMLSTAPKVASKPRQA
 SKAKVAFCTSIQDILLGKARPGTTAD

TRTRPLEQKLISEEDLAANDILDYKDDDDKV

Chromatograms:

https://cdn.origene.com/chromatograms/mk6485_a08.zip

Restriction Sites:

Sgfl-MluI

Cloning Scheme:


ACCN: NM_022905

ORF Size: 1341 bp

OTI Disclaimer: The molecular sequence of this clone aligns with the gene accession number as a point of reference only. However, individual transcript sequences of the same gene can differ through naturally occurring variations (e.g. polymorphisms), each with its own valid existence. This clone is substantially in agreement with the reference, but a complete review of all prevailing variants is recommended prior to use. [More info](#)

OTI Annotation: This clone was engineered to express the complete ORF with an expression tag. Expression varies depending on the nature of the gene.

Components: The ORF clone is ion-exchange column purified and shipped in a 2D barcoded Matrix tube containing 10ug of transfection-ready, dried plasmid DNA (reconstitute with 100 ul of water).

Reconstitution Method:

1. Centrifuge at 5,000xg for 5min.
2. Carefully open the tube and add 100ul of sterile water to dissolve the DNA.
3. Close the tube and incubate for 10 minutes at room temperature.
4. Briefly vortex the tube and then do a quick spin (less than 5000xg) to concentrate the liquid at the bottom.
5. Store the suspended plasmid at -20°C. The DNA is stable for at least one year from date of shipping when stored at -20°C.

RefSeq: [NM_022905.4](#), [NP_075056.3](#)

RefSeq Size: 3562 bp

RefSeq ORF: 1343 bp

Locus ID: 64927

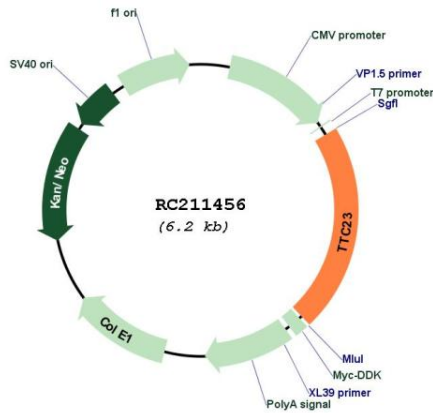
Cytogenetics: 15q26.3

Domains: TPR

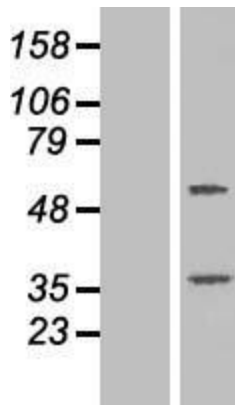
MW: 49.8 kDa

Gene Summary: Participates positively in the ciliary Hedgehog (Hh) signaling.[UniProtKB/Swiss-Prot Function]

Product images:



Circular map for RC211456



Western blot validation of overexpression lysate (Cat# [LY421797]) using anti-DDK antibody (Cat# [TA50011-100]). Left: Cell lysates from untransfected HEK293T cells; Right: Cell lysates from HEK293T cells transfected with [RC222667] using transfection reagent MegaTran 2.0 (Cat# [TT210002]).