

Product datasheet for **RC211442**

SLC43A3 (NM_014096) Human Tagged ORF Clone

Product data:

Product Type:	Expression Plasmids
Product Name:	SLC43A3 (NM_014096) Human Tagged ORF Clone
Tag:	Myc-DDK
Symbol:	SLC43A3
Synonyms:	EEG1; ENBT1; FOAP-13; PRO1659; SEEEG-1
Vector:	pCMV6-Entry (PS100001)
E. coli Selection:	Kanamycin (25 ug/mL)
Cell Selection:	Neomycin



[View online »](#)

ORF Nucleotide Sequence:

>RC211442 ORF sequence
 Red=Cloning site Blue=ORF Green=Tags(s)

TTTTGTAATACGACTCACTATAGGGCGGCCGGAATTCGTCGACTGGATCCGGTACCGAGGAGATCTGCC
 GCC**GCGATCGCC**

ATGGCGGGCCAGGGCCTGCCCTGCACGTGGCCACACTGCTGACTGGGCTGCTGGAATGCCTGGGCTTTG
 CTGGCGTCTCTTTGGCTGGCCTTCACTAGTGTGGTCTTCAAGAATGAAGATTACTTTAAGGATCTGTG
 TGGACCAGATGCTGGCCGATTGGCAATGCCACAGGGCAGGCTGACTGCAAAGCCAGGATGAGAGGTTT
 TCACTCATCTTACCCTGGGGTCTTTCATGAACAACCTCATGACATTCCTCCACTGGCTACATCTTTGACC
 GGTTCAGACCACCGTGGCAGCCTCATAGCCATATTTTTCTACACCACCGCCACACTCATCATAGCCTT
 CACCTCTGCAGGCTCAGCCGTGCTGCTTCTGGCCATGCCAATGCTCACCATTGGGGGAATCCTGTTT
 CTCATCACCAACCTGCAGATTGGGAACCTATTTGGCCAAACCGTTCGACCATCATCACTCTGTACAATG
 GAGCATTTGACTTCTCGGCAGTCTTCTTATTATTAAGCTTCTTTATGAAAAAGGCATCAGCCTCAG
 GGCTCTTTCATCTTCTGTCTGTCAGTACCTGGCATGTAGCACGCACTTCTCCTGATGCCCGG
 GGGCACATCCCATACCCACTGCCCCCAACTACAGCTATGGCCTGTGCCCTGGGAATGGCACCACAAAGG
 AAGAGAAGGAAACAGCTGAGCATGAAAACAGGGAGCTACAGTCAAAGGAGTTCCTTTTCAGCGAAGGAAGA
 GACCCAGGGGCAGGGCAGAAGCAGGAACCTCCGCTCCTTCTGGAGCTACGCTTCTCTCGGGCCTTTGCC
 TGGCACCTGGTGTGGCTGTCTGTGATACAGTTGTGGCACTACCTTTCATTGGCACTCTCAACTCCTTGC
 TGACCAACATGGCCGGTGGGGACATGGCAGAGTCAGCACCTACACAAATGCCTTTGCCCTTCACTCAGTT
 CGGAGTGTGTGCCCCCTGGAATGGCCTGCTCATGGACCGCTTAAACAGAAGTACCAGAAGGAAGCA
 AGAAAGACAGGTTCCCTCACTTTGGCGGTGGCCCTCTGCTCGACGGTGCCTTCGCTGGCCCTGACATCCC
 TGCTGTGCCTGGCTTCGCCCTCTGTGCCCTCAGTCCCCATCCTCCCTCCTCAGTACCTCACCTTATCCT
 GCAAGTGATCAGCCGCTCCTTCTCTATGGGAGCAACGCGGCTTCTCACCTTGGCTTCCCTTCAGAG
 CACTTTGGCAAGCTCTTTGGGCTGGTGTGTCGCTGTGGTGTCTCTGCTCCAGTTCCCATCT
 TCACCCTCATCAAAGGCTCCCTCAGAATGACCCATTTACGTGAATGTGATGTTGCTGCTGCTGCTGCTGCT
 TCTGACATTCTCCACCCTTTCTGGTATATCGGGAAATGCCGTAATTGAAAGAAAGTCCCTCTGCAATT
 GCA

ACGCGTACGCGGCCGCTCGAGCAGAAACTCATCTCAGAAGAGGATCTGGCAGCAAATGATATCCTGGATT
 ACAAGGATGACGACGATAAGGTTTAA

Protein Sequence:

>RC211442 protein sequence
 Red=Cloning site Green=Tags(s)

MAGQGLPLHVATLLTGLLECLGFAGVLFGWPSLVFVFKNEDYFKDLCPDAGPIGNATGQADCKAQDERF
 SLIFTLGSMNFMFTFPTGYIFDRFKTTVARLIAIFFYTTATLIIAFTSAGSAVLLFLAMPMLTIGGILF
 LITNLQIGNLFGQHRSTIITLYNGAFDSSAVFLIIKLLYEKISLRASFIFISVCSTWHVARTFLLMPR
 GHIPYPLPPNYSYGLCPGNGTTKEEKETAEHENRELQSKEFLSAKEETPGAGQKQELRSFWSYAFSRRFA
 WHLVWLSVIQLWHYLFIGTLNSLLTNMAGGDMARVSTYTNAAFQFQVLCAPWNGLLMDRLKQKYQKEA
 RKTGSSTLAVALCSTVPSLALTSLLCLGFALCASVPILPLQYLTFILQVIRSFLYGSNA AFLTLAFPSE
 HFGKLFGLVMALSAVVSLLQFPIFTLIKGSLQNDPFYVNMFMFLAILLTFHPFLVYRECRTWKESPSAI
 A

TRTRPLEQKLISEEDLAANDILDYKDDDDKV

Chromatograms:

https://cdn.origene.com/chromatograms/mk6395_e01.zip

Restriction Sites:

Sgfl-MluI

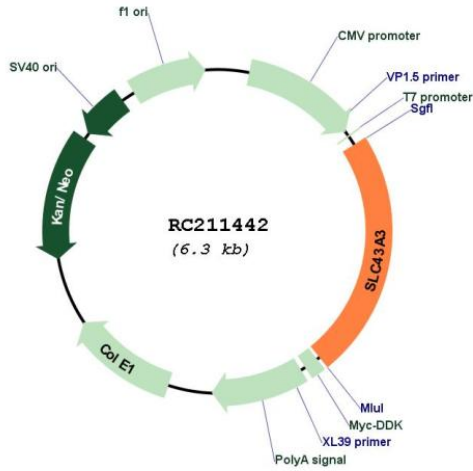
Cloning Scheme:

Cloning sites used for ORF Shutting:

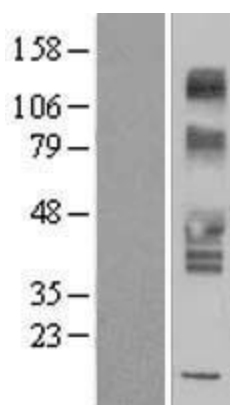


* The last codon before the Stop codon of the ORF

Plasmid Map:



ACCN:	NM_014096
ORF Size:	1473 bp
OTI Disclaimer:	The molecular sequence of this clone aligns with the gene accession number as a point of reference only. However, individual transcript sequences of the same gene can differ through naturally occurring variations (e.g. polymorphisms), each with its own valid existence. This clone is substantially in agreement with the reference, but a complete review of all prevailing variants is recommended prior to use. More info
OTI Annotation:	This clone was engineered to express the complete ORF with an expression tag. Expression varies depending on the nature of the gene.
RefSeq:	NM_014096.4
RefSeq Size:	2904 bp
RefSeq ORF:	1476 bp
Locus ID:	29015
Protein Families:	Transmembrane
MW:	54.5 kDa

Product images:


Western blot validation of overexpression lysate (Cat# [LY413672]) using anti-DDK antibody (Cat# [TA50011-100]). Left: Cell lysates from untransfected HEK293T cells; Right: Cell lysates from HEK293T cells transfected with [RC220430] using transfection reagent MegaTran 2.0 (Cat# [TT210002]).