

Product datasheet for RC211434L1

PRDM12 (NM_021619) Human Tagged Lenti ORF Clone

Product data:

Product Type:	Expression Plasmids
Product Name:	PRDM12 (NM_021619) Human Tagged Lenti ORF Clone
Tag:	Myc-DDK
Symbol:	PRDM12
Synonyms:	HSAN8; PFM9
Mammalian Cell Selection:	None
Vector:	pLenti-C-Myc-DDK (PS100064)
E. coli Selection:	Chloramphenicol (34 ug/mL)
ORF Nucleotide Sequence:	The ORF insert of this clone is exactly the same as(RC211434).
Restriction Sites:	SgfI-MluI
Cloning Scheme:	

Cloning sites used for ORF Shuttling:



* The last codon before the Stop codon of the ORF.

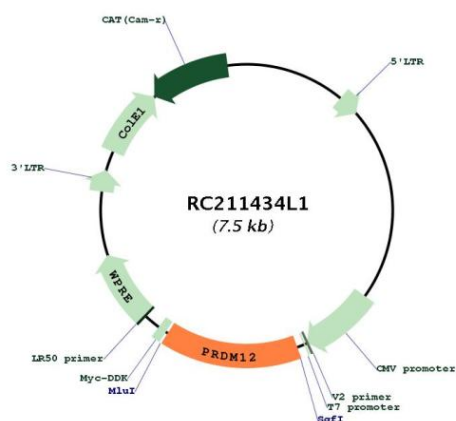
ACCN:	NM_021619
ORF Size:	1101 bp



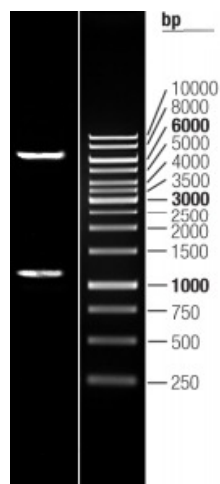
[View online »](#)

OTI Disclaimer:	The molecular sequence of this clone aligns with the gene accession number as a point of reference only. However, individual transcript sequences of the same gene can differ through naturally occurring variations (e.g. polymorphisms), each with its own valid existence. This clone is substantially in agreement with the reference, but a complete review of all prevailing variants is recommended prior to use. More info
OTI Annotation:	This clone was engineered to express the complete ORF with an expression tag. Expression varies depending on the nature of the gene.
Components:	The ORF clone is ion-exchange column purified and shipped in a 2D barcoded Matrix tube containing 10ug of transfection-ready, dried plasmid DNA (reconstitute with 100 ul of water).
Reconstitution Method:	<ol style="list-style-type: none"> 1. Centrifuge at 5,000xg for 5min. 2. Carefully open the tube and add 100ul of sterile water to dissolve the DNA. 3. Close the tube and incubate for 10 minutes at room temperature. 4. Briefly vortex the tube and then do a quick spin (less than 5000xg) to concentrate the liquid at the bottom. 5. Store the suspended plasmid at -20°C. The DNA is stable for at least one year from date of shipping when stored at -20°C.
RefSeq:	NM_021619.2
RefSeq Size:	2492 bp
RefSeq ORF:	1104 bp
Locus ID:	59335
UniProt ID:	Q9H4Q4
Cytogenetics:	9q34.12
MW:	40.2 kDa
Gene Summary:	<p>This gene encodes a transcriptional regulator of sensory neuronal specification that plays a critical role in pain perception. The encoded protein contains an N-terminal PRDI-BF1 and RIZ homology (PR) domain, a SET domain, and three C-terminal C2H2 zinc finger DNA-binding domains. Naturally occurring mutations in this gene are associated with congenital insensitivity to pain (CIP), and hereditary sensory and autonomic neuropathies (HSAN's) affecting peripheral sensory and autonomic neurons. Deregulation of this gene is associated with solid cancers and hematological malignancies including chronic myeloid leukaemia. [provided by RefSeq, Mar 2017]</p>

Product images:



Circular map for RC211434L1



Double digestion of RC211434L1 using SgfI and MluI