

## Product datasheet for **RC211430**

### **CTIP2 (BCL11B) (NM\_138576) Human Tagged ORF Clone**

#### **Product data:**

Product Type:	Expression Plasmids
Product Name:	CTIP2 (BCL11B) (NM_138576) Human Tagged ORF Clone
Tag:	Myc-DDK
Symbol:	CTIP2
Synonyms:	ATL1; ATL1-alpha; ATL1-beta; ATL1-delta; ATL1-gamma; CTIP-2; CTIP2; hRIT1-alpha; IDDFSTA; IMD49; RIT1; ZNF856B
Mammalian Cell Selection:	Neomycin
Vector:	pCMV6-Entry (PS100001)
E. coli Selection:	Kanamycin (25 ug/mL)



[View online »](#)

**ORF Nucleotide Sequence:**

>RC211430 representing NM\_138576  
 Red=Cloning site Blue=ORF Green=Tags(s)

TTTTGTAATACGACTCACTATAGGGCGGCCGGGAATTCGTCGACTGGATCCGGTACCGAGGAGATCTGCC  
 GCC**GCGATCGCC**

ATGTCCC GCCGAAACAGGGCAACCCG CAGCACTTGTCCAGAGGGAGCTCATCACCCAGAGGCTGACC  
 ATGTGGAGGCCGCATCCTCGAAGAAGACGAGGGTCTGGAGATAGAGGAGCCAAGTGGCCTGGGGCTGAT  
 GGTGGGTGGCCCCGACCTGACCTGCTCACCTGTGGCCAGTGCAATGAACTTCCCTTGGGGGACATC  
 CTGGTTTTATAGAGCACAAAAGGAAGCAGTGTGGCGGCAGCTTGGGTGCCTGCTATGACAAGGCCCTGG  
 ACAAGGACAGCCCGCCACCCTCCTCAGCTCCGAGCTCAGGAAAGTGTCCGAGCCGGTGGAGATCGGGAT  
 CCAAGTCACCCCGACGAAGATGACCACCTGCTCTACCCACGAAAGGCATCTGTCCAAGCAGGAGAAC  
 ATTGCAGGGCCGTGCAGGCTGCCAGCTGCCAGCGGTGGCCCCATAGCTGCCTCCTCCACCCTCACT  
 CATCCGTGATCACTTACCTCTGCGTGCCTGGGCGCTCTCCGCCCTGCCTCCCCCTGCGGTGCTGCAG  
 CGCGCGCCGGTCTCGGGTGACGGGACTCAGGGTGAGGGTCAGACGGAGGCTCCCTTTGGATGCCAGTGT  
 CAGTTGTCAAGTAAAGATGAGCCTTCCAGCTACATTTGCACAACATGCAAGCAGCCCTTCAACAGCGCGT  
 GGTTCCTGCTGCAGCACGCGCAGAACACGCACGGCTTCCGCATCTACCTGGAGCCCGGGCCGCCAGCAG  
 CTCGCTCACGCCGCGGCTCACCATCCCGCCCGGCTCGGGCCGGAGGCCGTGGCGCAGTCCCCGCTCATG  
 AATTTCTGGGCGACAGCAACCCCTTAACTGCTGCGCATGACGGGCCCATCTGCGGGACCACCCGG  
 GCTTGGCGAGGGCCGCTGCCGGGCACGCCGCTCTCTTCAAGTCCCGCCCGCGCCACCACCTGGACCC  
 GCACCCCTCAGTGCCGAGGAGATGGGGCTCGTCGCCCAGCACCCAGTGCCTTCGACCGAGTATGCGC  
 CTGAACCCATGGCCATCGACTCGCCGCCATGGACTTCTCGCGCGGCTCCGCGAGCTGGCGGGCAACA  
 GCTCCACGCGCCGCGCCGTGTCCCGGGCCGCGCAACCCATGACACGGCTCCTGAACCCCTTCCAGCC  
 CAGCCCCAAGTCCCGTTCTGAGCACGCCGCGCTGCCGCCATGCCCCCTGGCGGCACGCCGCCCCCG  
 CAGCCGCCAGCCAAGAGCAAGTCTGCGAGTTCTGCGGCAAGACCTTCAAGTTCCAGAGCAATCTCATCG  
 TGCACCGGCGCAGTACACGCGGCGAGAAGCCCTACAAGTGCCAGCTGTGCGACCACGCGTCTCGCAGGC  
 CAGCAAGCTCAAGCGCCACATGAAGACGCACATGCACAAGGCCGGCTCGCTGGCCGGCCGCTCCGACGAC  
 GGGCTCTCGGCCCGCAGCTCCCCGAGCCCGCACCCAGCAGCTGGCGGGCGAGGGCCTCAAGCGGCGCC  
 ACGGTGACTTCCGCCACCAGAGAGCGACCCGTCGCTGGGCCACGAGCCGAGGAGGAGGACGAGGAGGA  
 GGAGGAGGAGGAGGAGGAGTGTACTGGAGAACGAGAGCCGGCCGAGTCCGAGCTTCCAGATGGACTCG  
 GAGCTGAGCCGCAACCGGAGAACGCGGTGGTGGGGTCCCGGGGTCGCGGGCGGGGGCGGCAGCGG  
 CCAAGGCCTGGCTGACGAGAAGGCGCTGGTGTGGGCAAGGTATGGAGAACGTGGGCCTAGGCGCACT  
 GCCGCACTACGGCGAGCTCCTGGCCGACAAGCAGAAGCGCGGCGCCTTCTGAAGCGTGGCGGGCGGC  
 GGGGACGCGGGGACGACGACGACGCGGGCGGCTGCGGGGACGCGGGCGCGGGCGCGGCTCAACGGGC  
 GCGGGGGCGGCTTCGCGCCAGGCACCGAGCCCTTCCCGGGCTCTTCCCGCGCAAGCCCGCGCCGCTGCC  
 CAGCCCCGGGCTCAACAGCGCCGCAAGCGCATCAAGGTGGAGAAGGACCTGGAGCTGCCGCCCGCCGCG  
 CTCATCCCGTCCGAGAACGTGTACTCGCAGTGGCTGGTGGGCTACGCGGCGTCCGCGCACTTCCAGAGG  
 ACCCTTCTGGGCTTCCAGGACGACGACAGTCCGCTTCCGACGCTCGTCCGAGCACTCGTCCGAGAA  
 CGGCAGCTGCGCTTCTCCACGCGCCCGGGGACCTGCTGGACGCGCGCCTCTCGGGCCGACGCGGACG  
 GCCAGCGGAGGCAGCACCCGCACTGGGCGGCCCGGGCCCGGGCGGCCAGTCCAAGGAGGGCCCGCC  
 GCAGCGACACGTGCGAGTACTGCGGCAAGGTGTTCAAGAAGTGCAGCAACTTACGCGTGCACCGCGGAG  
 CCACACCGGCGAGCGGCTTACAAGTGCAGCTGTGCAACTACGCGTGCAGCAGAGCAGCAAGCTCACG  
 CGCCACATGAAGACGACGGGAGATCGGCAAGGAGGTGTACCGTGCAGCATCTGCCAGATGCCCTTCA  
 GCGTCTACAGCACCTGGAGAAACATGAAAAGTGGCACGGCGAGCACTTGTGACTAACGACGTCAA  
 AATCGAGCAGGCCGAGAGGAGC

**AGCGGACCG**ACGCGTACGCGGCCGCTCGAGCAGAACTCATCTCAGAAGAGGATCTGGCAGCAAATGATATCC  
 TGGATTACAAGGATGACGACGATAAGGTTTAA

**Protein Sequence:** >RC211430 representing NM\_138576  
Red=Cloning site Green=Tags(s)

MSRRKQGNPQHL SQRELITPEADHVEAAILEEDEGLEIEEPSGLGLMVGPPDPLLTCGQCQMNFP LGDI  
 LVFIEHKRKQCGGSLGACYDKALDKDSPPPSSRSELRKVSEPVEIGIQVTPDEDDHLLSPTKGCIPKQEN  
 IAGPCRPAQLPAVAPIAASSHPHSSVITSPLRALGALPPCLPLCCSARPVSGDGTQEGEQTEAPFGCQC  
 QLSGKDEPSSYICTTCKQPFNSAWFLLQHAQNTGHGFRIYLEPGPASSLTPRLTIPPLGPEAVAQSPLM  
 NFLGDSNPFNLLRMTGPILRDHPGFEGRLPGTPPLFSPPPRHHLDPHRLSAEEMGLVAQHPSAFDRVMR  
 LNPMAIDSPAMDFSRRRLRELAGNSSTPPPVSPPGRGNPMHRLLNPFQSPKSPFLSTPPLPMPGGTPTPP  
 QPPAKSKSCEFCGKTFKFQSNLIVHRRSHTGEKPYKCQLCDHACSQASKLKRHMKTHMHKAGSLAGRSDD  
 GLSAASSPEPGTSELAGEGLKAADGDFRHHESDPSLGHEPEEEEEEEEEEEEEELLENESRPSSFMSDS  
 ELSRNRENGGGVPGVPGAGGGAALADEKALVLGKVMENVGLGALPQYGELLADKQKRGAFKRAAGG  
 GDAGDDDDAGGCGDAGAGAVNGRGGGFAPGTEPFPGLFPRKPAPLPSPLNSAAKRIKVEKDLELPPAA  
 LIPSENVYSQWL VGAAASRHFMDPFLGF TDARQSPFAT SSEHSENGSLRFSTPPGDL LDGGLSGRSGT  
 ASGGSTPHLGGPGPRPSSKEGRRSDTCEYCGKVFKNCSNLTVHRRSHTGERPYKCELCNYACAQSSKLT  
 RHMKTHGQIGKEYVRCDICQMPFSVYSTLEKHMKKWHGEHLLTNDVKIEQAERS

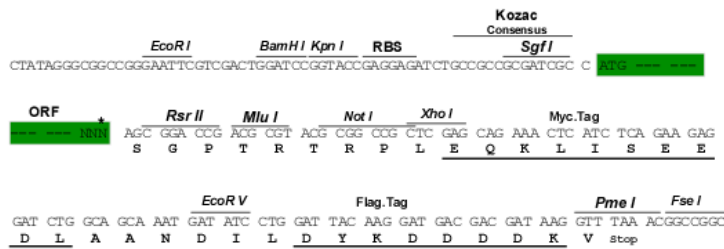
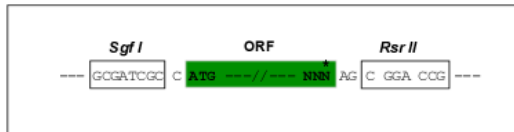
SGPTRTRRLEQKLISEEDLAANDILDYKDDDDKV

**Chromatograms:** [https://cdn.origene.com/chromatograms/mk8025\\_h01.zip](https://cdn.origene.com/chromatograms/mk8025_h01.zip)

**Restriction Sites:** SgfI-RsrII

**Cloning Scheme:**

Cloning sites used for ORF Shuttling:



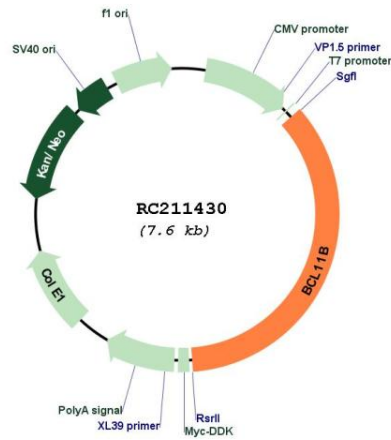
\* The last codon before the Stop codon of the ORF

**ACCN:** NM\_138576

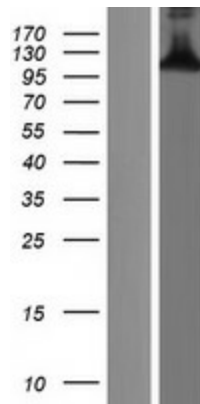
**ORF Size:** 2682 bp

<b>OTI Disclaimer:</b>	The molecular sequence of this clone aligns with the gene accession number as a point of reference only. However, individual transcript sequences of the same gene can differ through naturally occurring variations (e.g. polymorphisms), each with its own valid existence. This clone is substantially in agreement with the reference, but a complete review of all prevailing variants is recommended prior to use. <a href="#">More info</a>
<b>OTI Annotation:</b>	This clone was engineered to express the complete ORF with an expression tag. Expression varies depending on the nature of the gene.
<b>Components:</b>	The ORF clone is ion-exchange column purified and shipped in a 2D barcoded Matrix tube containing 10ug of transfection-ready, dried plasmid DNA (reconstitute with 100 ul of water).
<b>Reconstitution Method:</b>	<ol style="list-style-type: none"><li>1. Centrifuge at 5,000xg for 5min.</li><li>2. Carefully open the tube and add 100ul of sterile water to dissolve the DNA.</li><li>3. Close the tube and incubate for 10 minutes at room temperature.</li><li>4. Briefly vortex the tube and then do a quick spin (less than 5000xg) to concentrate the liquid at the bottom.</li><li>5. Store the suspended plasmid at -20°C. The DNA is stable for at least one year from date of shipping when stored at -20°C.</li></ol>
<b>RefSeq:</b>	<a href="#">NM_138576.4</a>
<b>RefSeq Size:</b>	7816 bp
<b>RefSeq ORF:</b>	2685 bp
<b>Locus ID:</b>	64919
<b>UniProt ID:</b>	<a href="#">Q9C0K0</a>
<b>Cytogenetics:</b>	14q32.2
<b>Protein Families:</b>	Druggable Genome
<b>MW:</b>	95.3 kDa
<b>Gene Summary:</b>	This gene encodes a C2H2-type zinc finger protein and is closely related to BCL11A, a gene whose translocation may be associated with B-cell malignancies. Although the specific function of this gene has not been determined, the encoded protein is known to be a transcriptional repressor, and is regulated by the NURD nucleosome remodeling and histone deacetylase complex. Four alternatively spliced transcript variants encoding distinct isoforms have been found for this gene. [provided by RefSeq, Aug 2013]

Product images:



Circular map for RC211430



Western blot validation of overexpression lysate (Cat# [LY408567]) using anti-DDK antibody (Cat# [TA50011-100]). Left: Cell lysates from untransfected HEK293T cells; Right: Cell lysates from HEK293T cells transfected with RC211430 using transfection reagent MegaTran 2.0 (Cat# [TT210002]).