

## Product datasheet for **RC211428**

### SLC5A4 (NM\_014227) Human Tagged ORF Clone

#### Product data:

Product Type:	Expression Plasmids
Product Name:	SLC5A4 (NM_014227) Human Tagged ORF Clone
Tag:	Myc-DDK
Symbol:	SLC5A4
Synonyms:	DJ90G24.4; SAAT1; SGLT3
Mammalian Cell Selection:	Neomycin
Vector:	pCMV6-Entry (PS100001)
E. coli Selection:	Kanamycin (25 ug/mL)



[View online »](#)

ORF Nucleotide  
Sequence:

>RC211428 representing NM\_014227  
Red=Cloning site Blue=ORF Green=Tags(s)

TTTTGTAATACGACTCACTATAGGGCGGCCGGAATTCGTCGACTGGATCCGGTACCGAGGAGATCTGCC  
GCC**CGGATCGCC**

ATGGCCAGTACGGTTAGCCCCAGCACCATAGCTGAGACCCAGAGCCACCTCCATTGTCTGACCACATCC  
GAAATGCTGCTGACATCTCAGTCATTGTATCTATTTCTGGTGGTGATGGCTGTTGGGCTGTGGCGGAT  
GCTGAAGACCAACCGAGGTAATAAGGAGGCTTCTCCTCGTGGTGGTATATGGCCTGGTGGCCGATG  
GGCGCCTCTCTTTGCCAGTAACATCGGCAGCAACCACTATGTGGGGCTGGCTGGGACAGGAGCAGCTT  
CAGGAGTCGCCACCGTAACATTTGAATGGACTTCCCTCAGTAATGTTGCTGATTCTTGGGTGGATCTTTGT  
CCCTATCTACATCAAGTCGGGGGTGATGACCATGCCGGAATATCTCAAGAAGCGGTTTGGTGGGAGCGA  
CTCCAGGTCTACCTCTCCATCTCTCCCTTTCATCTGTGTGGTTTTGTAATTTCTGCAGACATATTTG  
CTGGAGCCATATTCATCAAGCTGGCCTTGGGATGGACCTTTACCTGGCAATCTTCATCCTTTGGCTAT  
GACTGCTGTTTACACCACCACTGGGGGCTTGGCCTCGGTGATTTACACAGACACCCTCCAGACCATCATC  
ATGCTGATTGGCTCTTTTATTCTCATGGGGTTGCATTTAACGAAGTTGGAGGTTATGAGAGCTTTACCG  
AGAAGTACGTGAATGCCACCCATCCGTAGTCGAGGGGGACAACCTTGACAAATCAGTGCCAGTTGCTACAC  
ACCTCGGGCGGACTCCTTCCACATCTTCCGAGATGCTGTGACTGGGGACATTCCATGGCCAGGAATTATA  
TTTGGAATGCCATTACAGCTTTGTGGTACTGGTGACAAATCAGGTCATTGTGCAGCGCTGCCTGTGTG  
GCAAGGACATGTCTCACGTGAAGCCGCTTGCATTATGTGTGCTTACCTGAAGCTGCTGCCCATGTTCTCT  
CATGGTGATGCCGGGGATGATCAGCCGCATCCTGTACACAGATATGGTAGCATGTGTGGTACCTTCTGAA  
TGCCCAAGGACTGCGAGGCCTGATGCTTTCGGTCATGCTGGCCTCTCATGAGCTCCCTGACCTCCAT  
CTTCAACAGCGCCAGCACCCCTTTCACCAATTGACCTCTACACCAAGATGCGGAAGCAAGCGTCGGAGAAA  
GAGCTCCTGATAGCTGGACGGATATTTGTTCTTCTATTAAGTGTGTGAGCATTGTGTGGGTCCCACTGG  
TACAAGTTTCTCAAAATGGACAATAATCCATTACACAGAATCAATTTCTAGCTACCTTGGGCCTCCAAT  
TGCAGCTGTCTTTGTGCTTGCCATCTTCTGTAAGAGTCAATGAACAGGGAGCATTCTGGGGTCTAATG  
GTTGGACTTGCAATGGCCTCATTTCGTATGATAACAGAGTTTGTCTTATGGAACAGGGAGTTGCTTGGCTC  
CCAGTAACTGTCCAAGATTATCTGTGGAGTGCATCTGTACTTTTCCATCGTTCTCTTTTTTGGGTC  
CATGCTGGTACCCTGGGAATTTCCCTCTTAACAAAACCAATTCCTGATGTACATCTGTACCGCCTGTGC  
TGGGTTCTTCGGAACAGTACAGAGGAGCGAATCGATATAGATGCAGAAGAGAAAAGTCAGGAAGAAACAG  
ATGATGGTGTGAAGAAGATTATCCTGAGAAATCACGTGGATGCCTCAAGAAAGCTTATGACTTGTCTGTG  
CGGTTTGCAGAAGGGACCAAGCTAACCAAGGAGGAGGAGGAAGCCTTGAGCAAGAAGCTCACAGACCG  
TCTGAGAGGCCCTCGTGGAGGACAATAGTGAACATCAACGCCATCCTCTCTCTGGCTGTGGTGGTCTTTA  
TTCACGGCTACTATGCC

**ACGCGT**ACGCGGCCGCTCGAGCAGAACTCATCTCAGAAGAGGATCTGGCAGCAATGATATCCTGGATT  
ACAAGGATGACGACGATAAGGTTTAA



**Reconstitution Method:**

1. Centrifuge at 5,000xg for 5min.
2. Carefully open the tube and add 100ul of sterile water to dissolve the DNA.
3. Close the tube and incubate for 10 minutes at room temperature.
4. Briefly vortex the tube and then do a quick spin (less than 5000xg) to concentrate the liquid at the bottom.
5. Store the suspended plasmid at -20°C. The DNA is stable for at least one year from date of shipping when stored at -20°C.

**RefSeq:** [NM\\_014227.3](#)

**RefSeq Size:** 2043 bp

**RefSeq ORF:** 1980 bp

**Locus ID:** 6527

**UniProt ID:** [Q9NY91](#)

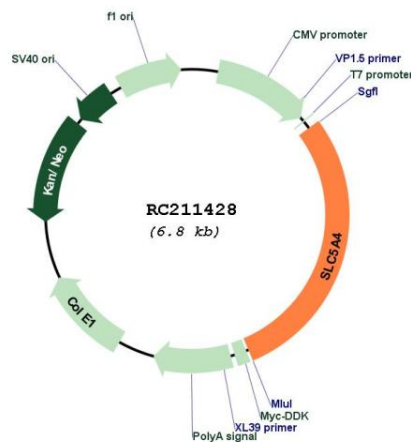
**Cytogenetics:** 22q12.3

**Protein Families:** Transmembrane

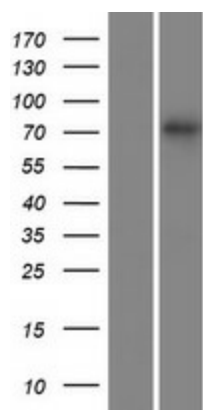
**MW:** 72.3 kDa

**Gene Summary:** Has electrogenic activity in response to glucose, and may function as a glucose sensor (PubMed:13130073, PubMed:17110502, PubMed:20421923, PubMed:22766068). Mediates influx of sodium ions into the cell but does not transport sugars (PubMed:13130073, PubMed:22766068). Also potentially activated by imino sugars such as deoxynojirimycin (DNJ) (PubMed:17110502, PubMed:20421923, PubMed:22766068).[UniProtKB/Swiss-Prot Function]

### Product images:



Circular map for RC211428



Western blot validation of overexpression lysate (Cat# [LY415418]) using anti-DDK antibody (Cat# [TA50011-100]). Left: Cell lysates from untransfected HEK293T cells; Right: Cell lysates from HEK293T cells transfected with RC211428 using transfection reagent MegaTran 2.0 (Cat# [TT210002]).