

Product datasheet for **RC211417**

OPA1 (NM_130832) Human Tagged ORF Clone

Product data:

Product Type:	Expression Plasmids
Product Name:	OPA1 (NM_130832) Human Tagged ORF Clone
Tag:	Myc-DDK
Symbol:	OPA1
Synonyms:	BERHS; largeG; MGM1; MTDPS14; NPG; NTG
Mammalian Cell Selection:	Neomycin
Vector:	pCMV6-Entry (PS100001)
E. coli Selection:	Kanamycin (25 ug/mL)



[View online »](#)

ORF Nucleotide Sequence:

>RC211417 representing NM_130832
 Red=Cloning site Blue=ORF Green=Tags(s)

TTTTGTAATACGACTCACTATAGGGCGGCCGGGAATTCGTCGACTGGATCCGGTACCGAGGAGATCTGCC
 GCC**CGGATCGCC**

ATGTGGCGACTACGTCGGCCGCTGTGGCCTGTGAGGTCTGCCAGTCTTTAGTGAACACAGCTCTGGAA
 TAAAAGGAAGTTTACCACTACAAAACTACATCTGGTTTCACGAAGCATTATCATTACATCATCTAC
 CTTAAAGCTTCAACGACCCCAATTAAGGACATCCTTTCAGCAGTTCTCTTCTCTGACAAAACCTTCCTTTA
 CGTAAACTGAAATTCTCTCCAATTAATATGGCTACCAGCCTCGCAGGAATTTTGGCCAGCAAGATTAG
 CTACGAGACTCTTAAACTTCGCTATCTCATACTAGGATCGGCTGTTGGGGGTGGCTACACAGCCAAAA
 GACTTTTGATCAGTGGAAAGATATGATACCGGACCTTAGTGAATATAAATGGATTGTGCCTGACATTGTG
 TGGAAATTGATGAGTATATCGATTTTGGTCACAAATTGGTTAGTGAAGTCATAGGAGCTTCTGACCTAC
 TTCTCTGTTAGGTTCTCGGAAGAAACGGCGTTTAGAGCAACAGATCGTGGATCTGAAAGTGACAAGCA
 TTTTAGAAAGGTGTCAGACAAAGAGAAAATTGACCAACTTCAGGAAGAAGCTTCTGCACACTCAGTTGAAG
 TATCAGAGAATCTTGGAAACGATTAGAAAAGGAGAACAAAGAATTGAGAAAATTAGATTGCGAAAAGATG
 ACAAAGGCATTCATCATAGAAAGCTTAAGAAATCTTTGATTGACATGTATTCTGAAGTCTTGATGTTCT
 CTCTGATTATGATGCCAGTTATAATACGCAAGATCATCTGCCACGGGTTGTTGTGGTTGGAGATCAGAGT
 GCTGAAAAGACTAGTGTGTTGGAATGATTGCCAAGCTCGAATATCCCAAGAGGATCTGGGGAGATGA
 TGACACGTTCTCCAGTTAAGGTGACTCTGAGTGAAGGTCTCACCATGTGGCCCTATTTAAAGATAGTTC
 TCGGGAGTTTGATCTTACCAAAGAAGAAGATCTTGACGATTAAGACATGAAATAGAAGTTCGAATGAGG
 AAAAATGTGAAAGAAGGCTGTACCGTTAGCCCTGAGACCATATCCTTAAATGTAAGGCGCTGGACTAC
 AGAGGATGGTGTGTTGACTTACCAGTGTGATTAATACTGTGACATCAGGCATGGCTCCTGACACAAA
 GGAAACTATTTTCAGTATCAGCAAAGCTTACATGCAGAATCCTAATGCCATCATCTGTGTATTCAAGAT
 GGATCTGTGGATGCTGAACGAGTATTGTTACAGACTTGGTCAGTCAAATGGACCCTCATGGAAGGAGAA
 CCATATTCGTTTTGACCAAAGTAGACCTGGCAGAGAAAATGTAGCCAGTCCAAGCAGGATTCAGCAGAT
 AATTGAAGGAAAGCTCTCCCAATGAAAGCTTTAGGTTATTTGCTGTTGTAACAGGAAAAGGGAACAGC
 TCTGAAAGCATTGAAGCTATAAGAGAATATGAAGAAGAGTTTTTTCAGAATCAAAGCTCCTAAAGACAA
 GCATGCTAAAGGCACACCAAGTACTACAAGAAATTTAAGCCTTGCAGTATCAGACTGCTTTTGGAAAAT
 GGTACGAGAGTCTGTTGAACAACAGGCTGATAGTTTCAAAGCAACACGTTTTAACCTTGAAGTGAATGG
 AAGAATAACTATCCTCGCTGCGGGAAGTTGACCGGAATGAACTATTTGAAAAGCTAAAATGAAATCC
 TTGATGAAGTTATCAGTCTGAGCCAGGTTACACCAAACATTGGGAGGAAATCCTTCAACAATCTTTGTG
 GGAAAGAGTATCAACTCATGTGATTGAAAACATCTACCTTCCAGCTGCGCAGACCATGAATTCAGGAACT
 TTTAACACCACAGTGGATATCAAGCTTAAACAGTGGACTGATAAACAACCTTCTAATAAAGCAGTAGAGG
 TTGCTTGGGAGACCCTACAAGAAGAATTTCCCGCTTATGACAGAACCAGGAAAGGAAAGAGCATGATGA
 CATATTTGATAAACTTAAAGAGGCTGTTAAGGAAGAAAGTATTAACGACACAAGTGAATGACTTTGCG
 GAGGACAGCTTGAGGGTATTCAACACAATGCTTTGGAAGACCGATCCATATCTGATAAACAGCAATGGG
 ATGCAGCTATTTATTTTATGGAAGAGGCTCTGCAGGCTCGTCTCAAGGATACTGAAAATGCAATTGAAAA
 CATGGTGGTCCAGACTGGAAAAAGAGGTGGTTATACTGGAAGAATCGGACCCAAGAACAGTGTGTTTCA
 AATGAAACCAAGAATGAATTGGAGAAGATGTTGAAATGTAATGAGGAGCACCCAGCTTATCTTGAAGTG
 ATGAAATAACACAGTCCGGAAGAACCTTGAATCCCGAGGAGTAGAAGTATGATCAAGCTTGATTAAGGA
 TACTTGGCATCAAGTTTATAGAAGACATTTTTTAAAAACAGCTCTAAACCATTGTAACCTTTGTGGAAGA
 GGTTTTTATTACTACCAAAGGCATTTTGTAGATTCTGAGTTGGAATGCAATGATGTTGCTTGTGTTTGGC
 GTATACAGCGCATGCTTGTATCACCAGCAATACTTTAAGGCAACAACCTTACAAATACTGAAGTTAGGCG
 ATTAGAGAAAAATGTTAAAGAGGTATTGGAAGATTTTGTGTAAGATGGTGAAGAAGATTAAATGCTT
 ACTGGTAAACGCGTTCAACTGGCGGAAGACCTCAAGAAAGTTAGAGAAAATCAAGAAAAACTTGATGCTT
 TCATTGAAGCTTTCATCAGGAGAAA

AG**CGGACCG**ACGCGTACGCGGCCGCTCGAGCAGAAAACCTCATCTCAGAAGAGGATCTGGCAGCAAATGATATCC
 TGGATTACAAGGATGACGACGATAAGGTTTAA

Protein Sequence: >RC211417 representing NM_130832
 Red=Cloning site Green=Tags(s)

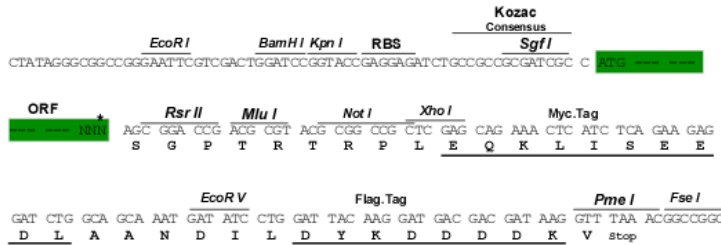
MWRLRRAAVACEVCQSLVKHSSGIKGSPLQLHLVSRSIYHSHHPTLKLQRPQLRTSFQQFSSLTNLPL
 RKLKFSPIKYGYQPRRFWPARLATRLLKRLYLILGSAVGGGYAKKTFDQWKDMIPDLSEYKWI
 VPDIWWEIDEYIDFGHKLVEVIGASDLLLLGSPETAFRATDRGSESDKHFRKVSDEKIDQLQEEL
 LHTQLKYQRILERLEKENKELRKLVLQKDDKGIHHRKLLKSLIDMYSEVLDVLSYDASYNTQDHL
 PRVVVVDQSAGKTSVLEMI AQARIFPRGSGEMMTRSPVKVTLSEGP HHVALFKDSSREFDLTK
 EEDLAALRHEIELRMRKNVKEGCTVSPETISLNVKGPGLQRMVLDLPGVINTVTS
 GMAPDTKETIFSIKAYMQNPNAIILCIQDGSVDAERSIVTDLVSQMDPHGRRTIFVLTKV
 DLAEKNVASPSRIQQIIEGKLFPMKALGYFAVVTGKGNSESIEAIREYEEFFQNSKLLKTSML
 KAHQVTTNRNLSLAVSDCFWKMVRESVEQQADSFKATRFNLETWKNNYPRLRELD
 RNELFEKAKNEILDEVISLSQVTPKHWEELQQSLWERVSTHVIENIYLPAAQTMNSGT
 FNTTVDIKLKQWTDKQLPNKAVEVAVETLQEEFSRFMTEPKGKEHDDIFDKLKEAVKEESIK
 RHKWNDFAEEDSLRVIQHNALEDRSISDKQQWDAAIYFMEELQARLKDTENAIENMVGPDW
 KKRWL YWKNRTQEQC VHNETKNELEKMLKCNEEHPAYLASDEITTVRKNLESRGVEVDP
 SLIKDTHQVYRRHFLKLTALNHCNLCRRGFYYYQRHFVDESELCNDVVLFWRIQRMLAIT
 ANTLRQQLTNTEVRRLEKNVKEVLEDF AEDGEKKIKLLTGKRVQLAEDLKKVREIQEKLD
 AFIEALHQEK

SGPTRRRLEQKLISEEDLAANDILDYKDDDDKV

Restriction Sites: SgfI-RsrII

Cloning Scheme:

Cloning sites used for ORF Shuttling:



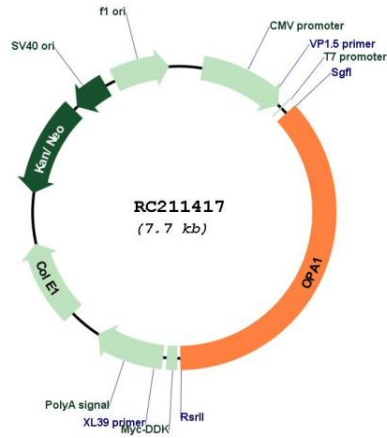
* The last codon before the Stop codon of the ORF

ACCN: NM_130832

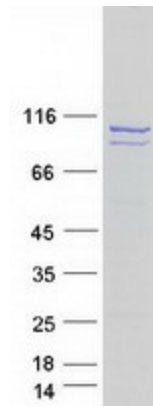
ORF Size: 2826 bp

OTI Disclaimer:	<p>Due to the inherent nature of this plasmid, standard methods to replicate additional amounts of DNA in E. coli are highly likely to result in mutations and/or rearrangements. Therefore, OriGene does not guarantee the capability to replicate this plasmid DNA. Additional amounts of DNA can be purchased from OriGene with batch-specific, full-sequence verification at a reduced cost. Please contact our customer care team at custsupport@origene.com or by calling 301.340.3188 option 3 for pricing and delivery.</p> <p>The molecular sequence of this clone aligns with the gene accession number as a point of reference only. However, individual transcript sequences of the same gene can differ through naturally occurring variations (e.g. polymorphisms), each with its own valid existence. This clone is substantially in agreement with the reference, but a complete review of all prevailing variants is recommended prior to use. More info</p>
OTI Annotation:	<p>This clone was engineered to express the complete ORF with an expression tag. Expression varies depending on the nature of the gene.</p>
Components:	<p>The ORF clone is ion-exchange column purified and shipped in a 2D barcoded Matrix tube containing 10ug of transfection-ready, dried plasmid DNA (reconstitute with 100 ul of water).</p>
Reconstitution Method:	<ol style="list-style-type: none">1. Centrifuge at 5,000xg for 5min.2. Carefully open the tube and add 100ul of sterile water to dissolve the DNA.3. Close the tube and incubate for 10 minutes at room temperature.4. Briefly vortex the tube and then do a quick spin (less than 5000xg) to concentrate the liquid at the bottom.5. Store the suspended plasmid at -20°C. The DNA is stable for at least one year from date of shipping when stored at -20°C.
RefSeq:	<p>NM_130832.3</p>
RefSeq Size:	<p>6291 bp</p>
RefSeq ORF:	<p>2829 bp</p>
Locus ID:	<p>4976</p>
Cytogenetics:	<p>3q29</p>
MW:	<p>109.4 kDa</p>
Gene Summary:	<p>The protein encoded by this gene is a nuclear-encoded mitochondrial protein with similarity to dynamin-related GTPases. The encoded protein localizes to the inner mitochondrial membrane and helps regulate mitochondrial stability and energy output. This protein also sequesters cytochrome c. Mutations in this gene have been associated with optic atrophy type 1, which is a dominantly inherited optic neuropathy resulting in progressive loss of visual acuity, leading in many cases to legal blindness. [provided by RefSeq, Aug 2017]</p>

Product images:



Circular map for RC211417



Coomassie blue staining of purified OPA1 protein (Cat# [TP311417]). The protein was produced from HEK293T cells transfected with OPA1 cDNA clone (Cat# RC211417) using MegaTran 2.0 (Cat# [TT210002]).