

Product datasheet for **RC211416**

ZNF497 (NM_198458) Human Tagged ORF Clone

Product data:

Product Type:	Expression Plasmids
Product Name:	ZNF497 (NM_198458) Human Tagged ORF Clone
Tag:	Myc-DDK
Symbol:	ZNF497
Mammalian Cell Selection:	Neomycin
Vector:	pCMV6-Entry (PS100001)
E. coli Selection:	Kanamycin (25 ug/mL)



[View online »](#)

ORF Nucleotide Sequence:

>RC211416 ORF sequence
 Red=Cloning site Blue=ORF Green=Tags(s)

TTTTGTAATACGACTCACTATAGGGCGGCCGGGAATTCGTCGACTGGATCCGGTACCGAGGAGATCTGCC
 GCC**CGCATCGCC**

ATGGAGTCCCAAGAGGGTGGACCTGCAGGTGGCCCCAGAGGAAGGCCAGGTCCTCTGCAATGTGAAGA
 CTGCCACGAGGGGCTCTCTGAGGGGGCTGTGTCTGGAGGCTGGGGGGCTGGGAAAACCTCACGGAGGT
 TCCGAGGGAGGCAGGGGACGGCCAGCGGACGAAAGCCACACTGGGGGCGGCGGACGAACAGGGAGGCCCC
 GGCAGGGAGTGGGCCCGCAGACGGTGGGCGGGACGGGGCTGGGCCAGGAGCGAGCCTGCAGACCGGG
 CGTTGCGCCCTTCGCTCTCCAGAGGAGCCGGGCTGCCGGTGGGGGAGTGGCGCAAGGCGTTCAGCCA
 GGGCTCTACTTGTGCAGCATCGGCGGTGCACACAGGCGAGAAGCCGTACACGTGCCCGAGTGGCGC
 AAGGCCTTCGCTGGAGTCCAACCTCAGCCAGCACCAGCGCATCCACAGCGGCGAGAAGCCCTACGCTT
 GCAGGGAGTGGCGCAAGGCCTTCGCGCGCACTCGCAGCTCATCCACCACAGGAGACACAGCGGCCCT
 GAAGCCCTTCGCTGCCGGACTGCGGCAAGTCTTCGCGCAAGCACCAGCTGGTGCAGCACCAGCGC
 ACGCACACGGGGCAGAAGCCCTACGAGTGCCCGGAGTGGCGCAAGGCCTTCAGCTGGAATCCAATTTCC
 TGGAGCACCGGCGGTGCACACGGGCGCGGGCCGACGCCTGCCGGGACTGTGGCAAGGCCTTCAGCCA
 GAGCTCCAACCTGGCCGAGCACCTGAAGATCCACGCGGGCGCACGGCCACACGCCTGTCCCGACTGCGGC
 AAGGCCTTCGTGCGTGTGGCGGGCTGCGGCAGCACCGGCGCACGACAGCGAGAAGCCCTTCCCTT
 GCGCCGAGTGGGAAAGGCTTTCGCGAGAGCTCGCAGCTCTGCAGCACCAGCGCACGCACTGGTGA
 GCGGCCCTTCGAGTGGCCGAGTGGCCAGGCTTTCGTATGGGCTCTACCTGGCGGAGCACCAGGCGC
 GTGCACACGGGCGAGAAGCCTCATGCGTGGCCAGTGGCGCAAGGCCTTCAGCCAGCGCTCCAACCTAC
 TGAGCCACGGGCGCACGCACTCGGGCGCAAGCCCTTCGCTGCGCCGACTGCGGCAAGGCCTTCGCGG
 CAGTTCGCGCCTGGCGCACACCAGGCTTTCGCACACGGGAGAGCGACCCTTCGCTGCGCAGAATGCGGC
 AAGGCCTTCGCGGCGAGCTCCGAGCTGCGCCAGCACCAGCGCCTGCACTCTGGCGAGAGGCCGTTCTGT
 GCGCCACTGCAGCAAGGCCTTCGTGCGCAAGTGGAGCTCTAAGCCACCGGCGCACGACACGGGCGA
 GAGGCCCTACGCTTGGCGGAGTGGGGAAGCCTTTCAGCCACCCTTGAACCTCAACGAGCACCAGAAG
 CGGCACGGGGCCGCGTGGCC

ACGCGTACGCGGCGGCTCGAGCAGAAAACCTCATCTCAGAAGAGGATCTGGCAGCAAATGATATCTGGATT
 ACAAGGATGACGACGATAAGGTTTAA

Protein Sequence:

>RC211416 protein sequence
 Red=Cloning site Green=Tags(s)

MESPRGWLQVAPEEQVLCNVKTATRGLSEGA VSGGWGAWENSTEVPREAGDQQRQATLGADEQGGP
 GRELGPADGGRDAGPRSEPADRALRPSLPEEPGCRGCEGKAFSQGSYLLQHRRVHTGEKPYTCPECG
 KAFWSSNLSQHQRHSSEKPYACRECGKAFRAHSQLIHHQETHSGLKPFRCPCDGKSFGRSTTLVQHRR
 THTGEKPYECPECGKAFSWNSNLEHRRVHTGARPHACRDCGKAFSQSSNLAEHLKIHAGARPHACPDG
 KAFVRVAGLRQHRRTHSSEKPFCAECGKAFRESSQLLQHRTHTGERPFCAECQAFVMSYLAEHRR
 VHTGEKPHACAQCGKAFSQRSNLLSHRRTHSGAKPFACADCGKAFRGSSGLAHHRLSHTGERPFCAECG
 KAFRGSSSELRQHRLHSGERPFVCAHCSKAFVRKSELLSHRRTHGERPYACGECGKPFSHRCNLNEHQ
 RHGGRAAP

TRTRPLEQKLISEEDLAANDILDYKDDDDKV

Chromatograms:

https://cdn.origene.com/chromatograms/mk6444_f12.zip

Restriction Sites:

Sgfl-MluI

Cloning Scheme:


ACCN: NM_198458

ORF Size: 1494 bp

OTI Disclaimer: The molecular sequence of this clone aligns with the gene accession number as a point of reference only. However, individual transcript sequences of the same gene can differ through naturally occurring variations (e.g. polymorphisms), each with its own valid existence. This clone is substantially in agreement with the reference, but a complete review of all prevailing variants is recommended prior to use. [More info](#)

OTI Annotation: This clone was engineered to express the complete ORF with an expression tag. Expression varies depending on the nature of the gene.

Components: The ORF clone is ion-exchange column purified and shipped in a 2D barcoded Matrix tube containing 10ug of transfection-ready, dried plasmid DNA (reconstitute with 100 ul of water).

Reconstitution Method:

1. Centrifuge at 5,000xg for 5min.
2. Carefully open the tube and add 100ul of sterile water to dissolve the DNA.
3. Close the tube and incubate for 10 minutes at room temperature.
4. Briefly vortex the tube and then do a quick spin (less than 5000xg) to concentrate the liquid at the bottom.
5. Store the suspended plasmid at -20°C. The DNA is stable for at least one year from date of shipping when stored at -20°C.

RefSeq: [NM_198458.3](#)

RefSeq Size: 3578 bp

RefSeq ORF: 1497 bp

Locus ID: 162968

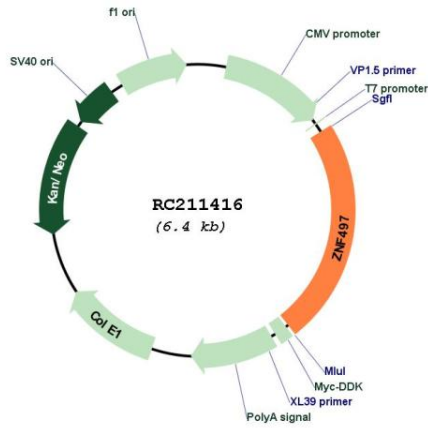
UniProt ID: [Q6ZNH5](#)

Cytogenetics: 19q13.43

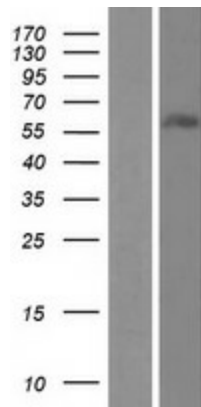
MW: 54.7 kDa

Gene Summary: May be involved in transcriptional regulation.[UniProtKB/Swiss-Prot Function]

Product images:



Circular map for RC211416



Western blot validation of overexpression lysate (Cat# [LY404940]) using anti-DDK antibody (Cat# [TA50011-100]). Left: Cell lysates from untransfected HEK293T cells; Right: Cell lysates from HEK293T cells transfected with RC211416 using transfection reagent MegaTran 2.0 (Cat# [TT210002]).