

Product datasheet for RC211413

FAM107B (NM_031453) Human Tagged ORF Clone

Product data:

Product Type:	Expression Plasmids
Product Name:	FAM107B (NM_031453) Human Tagged ORF Clone
Tag:	Myc-DDK
Symbol:	FAM107B
Synonyms:	C10orf45; HITS
Mammalian Cell Selection:	Neomycin
Vector:	pCMV6-Entry (PS100001)
E. coli Selection:	Kanamycin (25 ug/mL)
ORF Nucleotide Sequence:	>RC211413 representing NM_031453 Red=Cloning site Blue=ORF Green=Tags(s)

TTTTGTAATACGACTCACTATAGGGCGGCCGGAATTCGTCGACTGGATCCGGTACCGAGGAGATCTGCC
GCC**CGATCGCC**

ATGTCCACGTGGAAGCAAGACTCACAAAAGACTGAAGTCTCCCTCTAGAAGCATGCATCCATTCCGT
GCTCAGCTCTGCTCGCCTGTTTTGGGAATACGAGGGAGAGTGCTTCCTTCAATCAGTCCGGCGTGGCTGA
TACTCATTCCACCGTCCGTGTGCAGCCTGTGGCCAAAGCAGGCAGACAGCCAAGACACCAAGCGCAGAA
GGAGCTCCAGAGAAAAGCAAGATTCGAGCACCCATGCAGAGAGAAATGGCAGTGCGAATCGGAATTCAA
GTCACCGCACTGCGGCCAGCCCGGGAGACGCCTGAAGATGTGCCCGGGTCCCTGGATGATGGGGCGGA
CTGTGAAGCAGTGGTGTTCACGCTTCCATCCCCAGACCATCAATTATTGACACGCCCAAGGAAGAAGAA
TTTCGAGAAGAACCTAAATGCCTCGAGCTGGAGCAGAAAATGACATCAGACAGCCACCTGAGGATATTG
ACCATAAGGACTCATATCTCATTACAAGAAGCATCATGGCCGAGCCAGACTACATAGAAGATGACAATCC
TGAACTCATTAGGCCTCAGAACTGATCAATCCTGTAAAAACCTCCCGGAACCATCAAGATCTTCACAGA
GAACTTCTATGAATCAAAAAGGGTCTTGTCTCCTCAGAACAAACCAGAATTGCAGAAGGTGATGGAAA
AAAGAAAACGAGACCAAGTAATAAAGCAGAAGGAAGAAGCACAGAAGAAGAAATCTGACTTGGAAAT
AGAGCTATTAACCGCAGCAGAAGTTGGAGCAGCTTGAACCTGAGAAGCAGAAATGCAAGAAGAGCAA
GAAAATGCCCCCGAGTTTGTGAAGGTGAAAGGCAATCTCAGGAGAACAGGCCAAGAAGTCGCCCAAGCCC
AGGAGTCC

ACGCGTACGCGGCCGCTCGAGCAGAAACTCATCTCAGAAGAGGATCTGGCAGCAATGATATCCTGGATT
ACAAGGATGACGACGATAAGGTTTAA



[View online »](#)

Protein Sequence: >RC211413 representing NM_031453
Red=Cloning site Green=Tags(s)

MSTWKARLTKRLKSPSRSMHPFPCSALLACFGNTRESASFNQSGVADTHSTVVRVQPVAKAGRQPRHPSAE
 GAPEKRDSSSTAERNGSANRNSSHRTAAQPAETPEDVPGSLDDGADCEAVVFHASIPRPSIIDTPKEEE
 FREEPKCLELEQKMTSDSPEDIDHKDSYLITRSIMAEPTYIEDDNPELIRPQKLINPVKTSRNHQDLHR
 ELLMNQKRGLAPQNKPELQKVMKRRKRDQVIKQKEEEAQKKKSDLEIELLKRQQLKLEQLELEKQKLQEEQ
 ENAPEFVKYKGNLRRRTGQVEVAQES

TRTRPLEQKLISEEDLAANDILDYKDDDDKV

Chromatograms: https://cdn.origene.com/chromatograms/mk8025_e04.zip

Restriction Sites: SgfI-MluI

Cloning Scheme:



ACCN: NM_031453

ORF Size: 918 bp

OTI Disclaimer: The molecular sequence of this clone aligns with the gene accession number as a point of reference only. However, individual transcript sequences of the same gene can differ through naturally occurring variations (e.g. polymorphisms), each with its own valid existence. This clone is substantially in agreement with the reference, but a complete review of all prevailing variants is recommended prior to use. [More info](#)

OTI Annotation: This clone was engineered to express the complete ORF with an expression tag. Expression varies depending on the nature of the gene.

Components: The ORF clone is ion-exchange column purified and shipped in a 2D barcoded Matrix tube containing 10ug of transfection-ready, dried plasmid DNA (reconstitute with 100 ul of water).

Reconstitution Method:

1. Centrifuge at 5,000xg for 5min.
2. Carefully open the tube and add 100ul of sterile water to dissolve the DNA.
3. Close the tube and incubate for 10 minutes at room temperature.
4. Briefly vortex the tube and then do a quick spin (less than 5000xg) to concentrate the liquid at the bottom.
5. Store the suspended plasmid at -20°C. The DNA is stable for at least one year from date of shipping when stored at -20°C.

RefSeq: [NM_031453.3](#), [NP_113641.2](#)

RefSeq Size: 3785 bp

RefSeq ORF: 921 bp

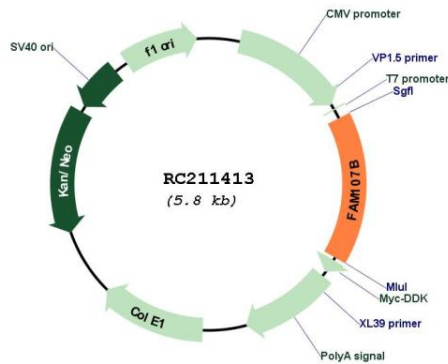
Locus ID: 83641

UniProt ID: [Q9H098](#)

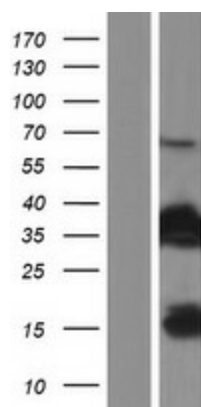
Cytogenetics: 10p13

MW: 34.6 kDa

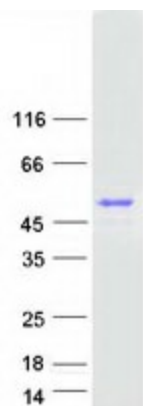
Product images:



Circular map for RC211413



Western blot validation of overexpression lysate (Cat# [LY410525]) using anti-DDK antibody (Cat# [TA50011-100]). Left: Cell lysates from untransfected HEK293T cells; Right: Cell lysates from HEK293T cells transfected with RC211413 using transfection reagent MegaTran 2.0 (Cat# [TT210002]).



Coomassie blue staining of purified FAM107B protein (Cat# [TP311413]). The protein was produced from HEK293T cells transfected with FAM107B cDNA clone (Cat# RC211413) using MegaTran 2.0 (Cat# [TT210002]).