

Product datasheet for RC211406

LHX3 (NM_014564) Human Tagged ORF Clone

Product data:

Product Type: Expression Plasmids
 Product Name: LHX3 (NM_014564) Human Tagged ORF Clone
 Tag: Myc-DDK
 Symbol: LHX3
 Synonyms: CPHD3; LIM3; M2-LHX3
 Mammalian Cell Selection: Neomycin
 Vector: pCMV6-Entry (PS100001)
 E. coli Selection: Kanamycin (25 ug/mL)
 ORF Nucleotide Sequence: >RC211406 representing NM_014564
 Red=Cloning site Blue=ORF Green=Tags(s)

TTTTGTAATACGACTCACTATAGGGCGGCCGGGAATTCGTCGACTGGATCCGGTACCGAGGAGATCTGCC
 GCC**CGATCGCC**

ATGGAGGCGCGGGGAGCTGGGCCCGGCCGGGAGTCGGCGGGAGGCGACCTGCTGCTAGCACTGCTGG
 CGCGGAGGGCAGACCTGCGCCGAGAGATCCCGCTGTGCGCTGGCTGTGACCAGCACATCTGGACCGCTT
 CATCCTCAAGGCTCTGGACCGCCACTGGCACAGCAAGTGTCTCAAGTGCAGCGACTGCCACACGCCACTG
 GCCGAGCGCTGCTTCAGCCGAGGGGAGAGCGTTTACTGCAAGGACGACTTTTTCAAGCGCTTCGGGACCA
 AGTGCGCCGCGTGCCAGCTGGGCATCCCGCCACGCAGGTGGTGCGCCGCGCCAGGACTTCGTGTACCA
 CCTGCACTGCTTTGCCTGCGTCGTGTGCAAGCGGCAGCTGGCCACGGGCGACGAGTTCTACCTCATGGAG
 GACAGCCGGCTCGTGTGCAAGGCGGACTACGAAACCGCCAAGCAGCGAGAGGCCGAGGCCACGGCCAAGC
 GGCCGCGCACGACCATCACCGCCAAGCAGCTGGAGACGCTGAAGAGCGCTTACAACACCTCGCCCAAGCC
 GGCGCGCCACGTGCGCGAGCAGCTCTCGTCCGAGACGGGCTGGACATGCGCGTGGTGCAGGTTTGGTTC
 CAGAACC GCCGGGCAAGGAGAAGAGGCTGAAGAAGGACGCCGGCCGCGCAGCGCTGGGGGAGTATTTCC
 GCAACATGAAGCGCTCCCGCGCGGCTCCAAGTCGGACAAGGACAGCGTTTCAAGAGGGGACAGGACAGCGA
 CGCTGAGGTCTCCTTCCCGATGAGCCTTCCTTGGCGGAAATGGGCCCGGCAATGGCCTCTACGGGAGC
 TTGGGGAAACCCACCCAGGCCTTGGGCCGGCCCTCGGGAGCCCTGGCAACTTCTCCCTGGAGCATGGAG
 GCCTGGCAGGCCAGAGCAGTACCGAGAGCTGCGTCCCGCAGCCCTACGGTGTCCCCCATCCCCGC
 CGCCCCGAGAGCCTCCCTGGCCCCAGCCCTCCTCTCCAGCCTGGTGTACCCAGACACCACTTGGGC
 CTTGTGCCCTCGGGAGCCCCGGCGGGCCCCACCCATGAGGGTGTGGCAGGGAACGGACCCAGTTCTG
 ACCTATCCACGGGGAGCAGCGGGGTTACCCGACTTCCCTGCCAGCCCCGCTCCTGGCTGGATGAGGT
 AGACCAGCTCAGTTC

ACGCGTACGCGGCCGCTCGAGCAGAACTCATCTCAGAAGAGGATCTGGCAGCAAATGATATCCTGGATT
 ACAAGGATGACGACGATAAGGTTTAA



Protein Sequence: >RC211406 representing NM_014564
Red=Cloning site Green=Tags(s)

MEARGELGPARESAGDLLLLALLARRADLRREIPLCAGCDQHILDRFILKALDRHWSKCLKCSDCHTPL
 AERCF SRGESVYCKDDFFKRFGTKCAACQLGIPPTQVVRRAQDFVYHLHCFACVCKRQLATGDEFYLME
 DSRLVCKADYETAKQREAEATAKRPRTTITAKQLETLSAYNTSPKPARHVREQLSSETGLDMRVVQWF
 QNRRAKEKRLKKDAGRQRWGQYFRNMKRSRGGSKSDKDSVQEGQSDAEVSFPDEPSLAEMGPANGLYGS
 LGEPTQALGRPSGALGNFSLHGLLAGPEQYREL R P G S P Y G V P P S P A A P Q S L P G P Q L L S S L V Y P D T S L G
 L V P S G A P G G P P M R V L A G N G P S S D L S T G S S G G Y P D F P A S P A S W L D E V D H A Q F

TRTRPLEQKLISEEDLAANDILDYKDDDDKV

Chromatograms: https://cdn.origene.com/chromatograms/mk6249_e10.zip

Restriction Sites: SgfI-MluI

Cloning Scheme:



* The last codon before the Stop codon of the ORF

ACCN: NM_014564

ORF Size: 1206 bp

OTI Disclaimer: The molecular sequence of this clone aligns with the gene accession number as a point of reference only. However, individual transcript sequences of the same gene can differ through naturally occurring variations (e.g. polymorphisms), each with its own valid existence. This clone is substantially in agreement with the reference, but a complete review of all prevailing variants is recommended prior to use. [More info](#)

OTI Annotation: This clone was engineered to express the complete ORF with an expression tag. Expression varies depending on the nature of the gene.

Components: The ORF clone is ion-exchange column purified and shipped in a 2D barcoded Matrix tube containing 10ug of transfection-ready, dried plasmid DNA (reconstitute with 100 ul of water).

Reconstitution Method:

1. Centrifuge at 5,000xg for 5min.
2. Carefully open the tube and add 100ul of sterile water to dissolve the DNA.
3. Close the tube and incubate for 10 minutes at room temperature.
4. Briefly vortex the tube and then do a quick spin (less than 5000xg) to concentrate the liquid at the bottom.
5. Store the suspended plasmid at -20°C. The DNA is stable for at least one year from date of shipping when stored at -20°C.

RefSeq: [NM_014564.1](#)

RefSeq Size: 2413 bp

RefSeq ORF: 1209 bp

Locus ID: 8022

UniProt ID: [Q9UBR4](#)

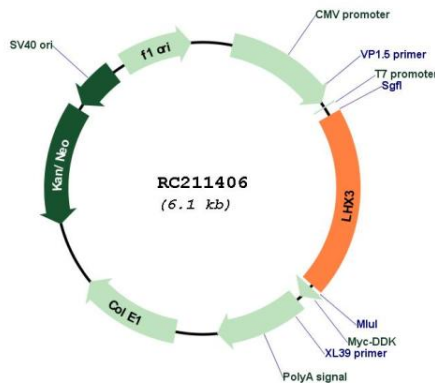
Cytogenetics: 9q34.3

Protein Families: Druggable Genome

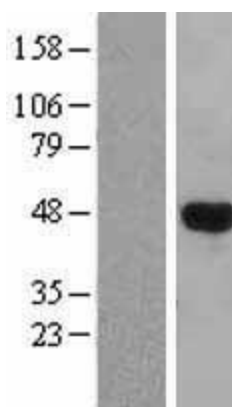
MW: 43.8 kDa

Gene Summary: This gene encodes a member of a large family of proteins which carry the LIM domain, a unique cysteine-rich zinc-binding domain. The encoded protein is a transcription factor that is required for pituitary development and motor neuron specification. Mutations in this gene cause combined pituitary hormone deficiency 3. Alternative splicing results in multiple transcript variants encoding different isoforms. [provided by RefSeq, Dec 2015]

Product images:



Circular map for RC211406



Western blot validation of overexpression lysate (Cat# [LY415201]) using anti-DDK antibody (Cat# [TA50011-100]). Left: Cell lysates from untransfected HEK293T cells; Right: Cell lysates from HEK293T cells transfected with RC211406 using transfection reagent MegaTran 2.0 (Cat# [TT210002]).