

## Product datasheet for **RC211405**

### **TBL2 (NM\_012453) Human Tagged ORF Clone**

#### **Product data:**

Product Type:	Expression Plasmids
Product Name:	TBL2 (NM_012453) Human Tagged ORF Clone
Tag:	Myc-DDK
Symbol:	TBL2
Synonyms:	WBSCR13; WS-betaTRP
Mammalian Cell Selection:	Neomycin
Vector:	pCMV6-Entry (PS100001)
E. coli Selection:	Kanamycin (25 ug/mL)



[View online »](#)

**ORF Nucleotide Sequence:**

>RC211405 representing NM\_012453  
 Red=Cloning site Blue=ORF Green=Tags(s)

TTTTGTAATACGACTCACTATAGGGCGGCCGGGAATTCGTCGACTGGATCCGGTACCGAGGAGATCTGCC  
 GCC**CGCATCGCC**

ATGGAGCTCTCGCAGATGTCGGAGCTCATGGGGCTGTCGGTGTTCGTTGGCTGCTGGCCCTGATGGCGA  
 CGGCGGGCGGTAGCGCGGGGGTGGCTGCGCGGGGGAGGAGAGGAGCGGGCCGCCCTGCCAAAAAGC  
 AAATGGATTTCCACCTGACAAATCTTCGGGATCCAAGAAGCAGAAACAATATCAGCGGATTCGGAAGGAG  
 AAGCCTCAACAACAACACTTCACCCACCGCCTCCTGGCTGCAGCTCTGAAGAGCCACAGCGGGAACATAT  
 CTTGCATGGACTTTAGCAGCAATGGCAAATACCTGGTACCTGTGCAGATGATCGCACCATCCGCATCTG  
 GAGCACC AAGGACTTCTGCAGCGAGAGCACC GCAGCATGAGAGCCAACGTGGAGCTGGACCAGCCACC  
 CTGGTGCCTTCAGCCCTGACTGCAGAGCCTTCATCGTCTGGCTGGCC AACGGGACACCCTCCGTGTCT  
 TCAAGATGACCAAGCGGGAGGATGGGGGTACACCTTCACAGCCACCCAGAGGACTTCCCTAAAAAGCA  
 CAAGGCGCTGTATCGACATTGGCATTGCTAACACAGGGAAGTTTATCATGACTGCCTCCAGTGACACC  
 ACTGTCCTCATCTGGAGCCTGAAGGGTCAAGTGTCTGTCTACCATCAACACCAACCAGATGAACAACACAC  
 ACGCTGTGTATCTCCCTGTGGCAGATTTGTAGCCTCGTGTGGCTTACCCCCAGATGTGAAGTTTGGGA  
 AGTCTGCTTTGAAAGAAGGGGGAGTTCAGGAGGTGGTGCAGCCTTCGAACTAAAGGGCCACTCCGCG  
 GCTGTGCACTCGTTTCTTCTCCAACGACTCACGGAGGATGGCTTCTGTCTCCAAGGATGGTACATGGA  
 AACTGTGGGACACAGATGTGGAATAACAAGAAGAAGCAGGACCCCTACTTGCTGAAGACAGGCCGCTTTGA  
 AGAGGCGGGGTGCCGCGCCGTGCCGCTGGCCCTCTCCCCAACGCCAGGTCTTGGCCTTGGCCAGT  
 GGCAGTAGTATTCATCTCTACAATACCCGGCGGGGCGAGAAGGAGGAGTCTTTGAGCGGGTCCATGGCG  
 AGTGTATCGCAAACCTTCTCTTTGATATCACTGGCCGCTTCTGGCCTCCTGTGGGACCGGGCGGTGCG  
 GCTGTTTTCAACAACCTCTGGCCACCGAGCCATGGTGGAGGAGATGCAGGGCCACCTGAAGCGGGCCTCC  
 AACGAGAGCACCCGCGAGAGGCTGCAGCAGCAGCTGACCCAGGCCCAAGAGACCCTGAAGAGCCTGGGTG  
 CCTGAAGAAG

**ACGCGT**ACGCGGGCGCTCGAGCAGAAACTCATCTCAGAAGAGGATCTGGCAGCAAATGATATCCTGGATT  
 ACAAGGATGACGACGATAAGGTTTAA

**Protein Sequence:**

>RC211405 representing NM\_012453  
 Red=Cloning site Green=Tags(s)

MELSQMSELMGLSVLLGLLALMATAAVARGWLRAGEERSGRPACQKANGFPPDKSSGSKKQKQYQIRKE  
 KPQQHNFTHRLAAALKSHSGNISCMDFSSNGKYLATCADDRTIRIWSTKDFLQREHRSMRANVELDHAT  
 LVRFSPDCRAFIWLANGDTLRVFKMTKREDDGGYFTATPEDFPKHKAPVIDIGIANTGKFIMTASSDT  
 TVLIWSLKGQVLSTINTNQMNTHAAVSPCGRFVASCFTPDVKVWEVCFGKKGEFQEVVRAFELKGHSA  
 AVHSFAFSNDSRRMASVSKDGTWKLWDTDVEYKKKQDPYLLKTGRFEEAAGAAPCRLALSPNAQVLALAS  
 GSSIHLYNTRRGEKEECFERVHGEICANLSFDITGRFLASCGRDRAVRLFHNTPGHRAMVEEMQGHKLRAS  
 NESTRQRLQQQLTQAQETLKSLGALKK

**TR**TRPLEQKLISEEDLAANDILDYKDDDDKV

**Chromatograms:**

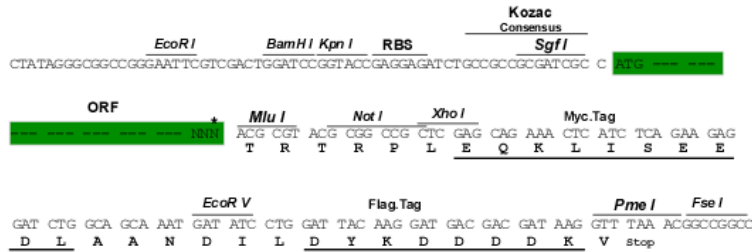
[https://cdn.origene.com/chromatograms/mk6492\\_d09.zip](https://cdn.origene.com/chromatograms/mk6492_d09.zip)

**Restriction Sites:**

Sgfl-Mlul

**Cloning Scheme:**

Cloning sites used for ORF Shuttling:



\* The last codon before the Stop codon of the ORF

**ACCN:** NM\_012453

**ORF Size:** 1341 bp

**OTI Disclaimer:** The molecular sequence of this clone aligns with the gene accession number as a point of reference only. However, individual transcript sequences of the same gene can differ through naturally occurring variations (e.g. polymorphisms), each with its own valid existence. This clone is substantially in agreement with the reference, but a complete review of all prevailing variants is recommended prior to use. [More info](#)

**OTI Annotation:** This clone was engineered to express the complete ORF with an expression tag. Expression varies depending on the nature of the gene.

**Components:** The ORF clone is ion-exchange column purified and shipped in a 2D barcoded Matrix tube containing 10ug of transfection-ready, dried plasmid DNA (reconstitute with 100 ul of water).

**Reconstitution Method:**

1. Centrifuge at 5,000xg for 5min.
2. Carefully open the tube and add 100ul of sterile water to dissolve the DNA.
3. Close the tube and incubate for 10 minutes at room temperature.
4. Briefly vortex the tube and then do a quick spin (less than 5000xg) to concentrate the liquid at the bottom.
5. Store the suspended plasmid at -20°C. The DNA is stable for at least one year from date of shipping when stored at -20°C.

**RefSeq:** [NM\\_012453.4](#)
**RefSeq Size:** 2333 bp

**RefSeq ORF:** 1344 bp

**Locus ID:** 26608

**UniProt ID:** [Q9Y4P3](#)
**Cytogenetics:** 7q11.23

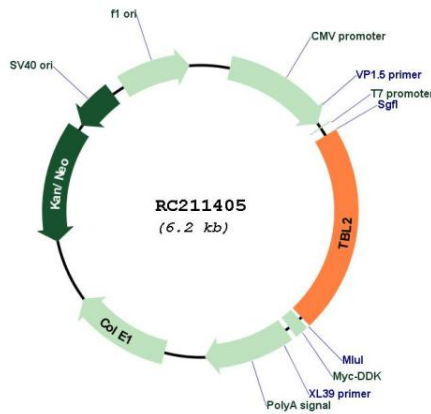
**Domains:** WD40

**Protein Families:** Transmembrane

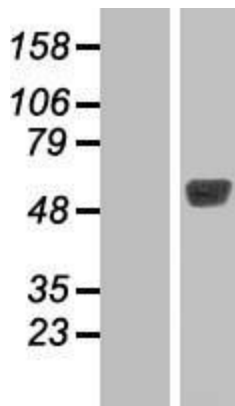
**MW:** 49.6 kDa

**Gene Summary:** This gene encodes a member of the beta-transducin protein family. Most proteins of the beta-transducin family are involved in regulatory functions. This protein is possibly involved in some intracellular signaling pathway. This gene is deleted in Williams-Beuren syndrome, a developmental disorder caused by deletion of multiple genes at 7q11.23. [provided by RefSeq, Jul 2008]

**Product images:**



Circular map for RC211405



Western blot validation of overexpression lysate (Cat# [LY415744]) using anti-DDK antibody (Cat# [TA50011-100]). Left: Cell lysates from untransfected HEK293T cells; Right: Cell lysates from HEK293T cells transfected with RC211405 using transfection reagent MegaTran 2.0 (Cat# [TT210002]).