

## Product datasheet for **RC211404**

### **RANBP3 (NM\_003624) Human Tagged ORF Clone**

#### **Product data:**

Product Type:	Expression Plasmids
Product Name:	RANBP3 (NM_003624) Human Tagged ORF Clone
Tag:	Myc-DDK
Symbol:	RANBP3
Mammalian Cell Selection:	Neomycin
Vector:	pCMV6-Entry (PS100001)
E. coli Selection:	Kanamycin (25 ug/mL)



[View online »](#)

**ORF Nucleotide Sequence:**

>RC211404 representing NM\_003624  
 Red=Cloning site Blue=ORF Green=Tags(s)

TTTTGTAATACGACTCACTATAGGGCGGCCGGGAATTCGTCGACTGGATCCGGTACCGAGGAGATCTGCC  
 GCC**GCGATCGCC**

ATGGCGGACCTGGCGAACGAAGAAAAGCCTGCCATTGCTCGCCCGTCTTTGTGTTTCAGAAGGATAAAG  
 GACAAAAGTCCCCTGCAGAGCAAAAAAAGTTGTCGGATTTCGGGAGAGGAGCCTCGGGGGAGGCTGAGGC  
 CCCCACCATGGCACGGGTACCCCGAGTCAGCTGGCGAGCATGCCCTAGAACCCTCTGCCCTGCTGGC  
 GCCTCAGCCAGCACTCTCCGCCTCCCGCTCCTGAAGCCAGTTCTCTCTTTCCGCGAGAAGTGGCAG  
 GGAGGTACAGTGGCGGCTCCAGTCTGAAGGGGAGAAGATTCTGACAGAGAAGATGGAAATTAAGTCCC  
 TCCTGTCAAGCGAGAAGAATCCTCTTTAACCCAGTCCCACCCTCACAGTCAGAGGAAAGGAGCAGT  
 GGCTTCCGGTTGAAGCCACCAACGCTGATCCACGGCCAAGCCCCAGCGCAGGTCTGCCAAGCCAGAAGC  
 CCAAGGAGCAGCAGCGGAGCGTCTTCCCGGGCAGTGTACAAGCTCCGAGCCAAAGGCGCTGTCCCA  
 GACTGTCCCAGCAGTGGCACCAACGGGGTCCAGCTCCAGCAGACTGCACGGGGCAGTCCCGCAGCA  
 TCCCCTGACACTGCTGCATGGAGAAGTCTTCCGAAGCTGCCGATGAGGAGAAAGAGCCCCAGAAAATG  
 AGTCCAGCAATGCCTCTGAAGAGGAAGCCTGTGAGAAAAAGACCCCGCCACACAGCAAGCCTTTGTATT  
 TGGGCAGAACTTGAGGGACAGAGTTAAGCTGATAAATGAGAGCGTGGACGAAGCCGACATGGAGAATGCT  
 GGACACCCAGCGCAGACACGCCAACCGCAACGAATAATTCCTCCAGTATATCAGTTCCAGTTTAGAGA  
 ACTCAACCAATAGTGGCAGCCTCCAGCAACAAATTTGTATTTGGCCAGAACATGAGCGAGCGAGTTTT  
 GAGCCCCCAAAATTAACGAGGTCAAGTTCAGATGCCAACAGGGAAAATGCAGCTGCCGAGTCAGGGTCT  
 GAGTCCCTCGTCCCAGGAGGCCACCCCTGAGAAAGAGTCCCTGGCTGAGTCGGCAGCCGCTACACCAAGG  
 CAACAGCGCGGAAGTGTGTTGGAAAAAGTGAAGTCAACACGGGGAGGAGGGCAGCAATGTGTT  
 ACAGATGCAGTGAAGCTGTTTGTCTTTGACAAGACCTCACAGTCTGGGTGGAGAGAGGCCGGGGGCTG  
 CTGACTCAATGACATGGCGTCCACCGATGACGGCACACTACAGTCCCAGTGTGATGCGGACCCAGG  
 GGAGCCTGCGACTGATCCTCAACACCAAGCTGTGGGCCAGATGCAGATCGACAAGGCCAGCGAGAAGAG  
 CATTTCGATCACAGCCATGGACACCGAGGACCAGGGCGTGAAGTCTTCTGATCTCGGCCAGCTCCAAG  
 GACACAGGTCAAGTGTATGCAGCCCTGCACCACCGCATCTGGCCCTGCGCAGCCGCTGGAGCAGGAGC  
 AGGAGGCCAAGATGCCCGCCCTGAGCCTGGGGCAGCCCCATCCAACGAGGAGGACGACAGCGACGATGA  
 CGATGTCCTGGCTCCTCAGGGGCCACCGCAGTGGTGTGGTACGAAGGGACGGGCAGACGACCCGGG  
 AGCACA

**ACGCGT**ACGCGGCGCTCGAGCAGAAACTCATCTCAGAAGAGGATCTGGCAGCAAATGATATCCTGGATT  
 ACAAGGATGACGACGATAAGGTTTAA

**Protein Sequence:**

>RC211404 representing NM\_003624  
 Red=Cloning site Green=Tags(s)

MADLANEEKPAIAPPVVFQKDKGQKSPAQKLNLSGEEPRGEAEAPHHGTGHPESAGEHALEPPAPAG  
 ASASTPPPPAPEAQLPPFPRELAGRSAGGSSPEGGEDSDREDGNYCPPVKRERTSSLTQFPPSQSEERSS  
 GFRLKPPTLIHGQAPSAGLPSQKPKQQRSVLRPAVLQAPQPKALSQTVPSSGTNGVSLPADCTGAVPAA  
 SPDTAAWRSPSEAADEEKEPQKNESNASEEEACEKKDPATQQAFFVFGQNLDRVKLINESVDEAD MENA  
 GHPSADTPTATNYFLQYISSLENSTNSADASSNKFVFGQNMSEVLSPPKLENEVSSDANRENAEAESGS  
 ESSSQEATPEKESLAESAAYTKATARKLLEKVEVITGEEAESNVLQMQCKLFVFDKTSQSWVERGRGL  
 LRLNDMASTDDGTLQSRLLVMRTQGSRLILNKLWAQMIDKASEKSIRITAMDTEDQGVKVFLLISASSK  
 DTGQLYAALHHRILALRSRVEQEQAEMPAPEPGAAPSNEEDSDDDDLAPSGATAAGAGDEGDGQTTG  
 ST

**TR**TRPLEQKLISEEDLAANDILDYKDDDDKV

**Chromatograms:**

[https://cdn.origene.com/chromatograms/mk8067\\_d07.zip](https://cdn.origene.com/chromatograms/mk8067_d07.zip)

**Restriction Sites:**

Sgfl-Mlul

**Cloning Scheme:**


**ACCN:** NM\_003624

**ORF Size:** 1686 bp

**OTI Disclaimer:** The molecular sequence of this clone aligns with the gene accession number as a point of reference only. However, individual transcript sequences of the same gene can differ through naturally occurring variations (e.g. polymorphisms), each with its own valid existence. This clone is substantially in agreement with the reference, but a complete review of all prevailing variants is recommended prior to use. [More info](#)

**OTI Annotation:** This clone was engineered to express the complete ORF with an expression tag. Expression varies depending on the nature of the gene.

**Components:** The ORF clone is ion-exchange column purified and shipped in a 2D barcoded Matrix tube containing 10ug of transfection-ready, dried plasmid DNA (reconstitute with 100 ul of water).

- Reconstitution Method:**
1. Centrifuge at 5,000xg for 5min.
  2. Carefully open the tube and add 100ul of sterile water to dissolve the DNA.
  3. Close the tube and incubate for 10 minutes at room temperature.
  4. Briefly vortex the tube and then do a quick spin (less than 5000xg) to concentrate the liquid at the bottom.
  5. Store the suspended plasmid at -20°C. The DNA is stable for at least one year from date of shipping when stored at -20°C.

**RefSeq:** [NM\\_003624.3](#)

**RefSeq Size:** 3198 bp

**RefSeq ORF:** 1689 bp

**Locus ID:** 8498

**UniProt ID:** [Q9H6Z4](#)

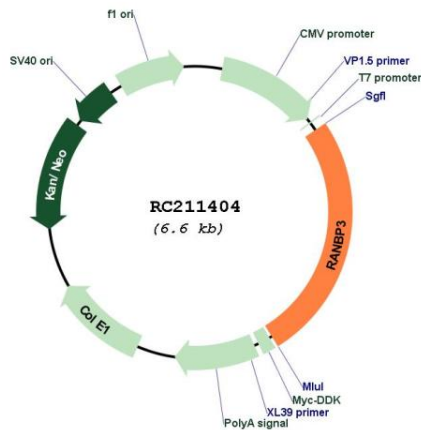
**Cytogenetics:** 19p13.3

**Domains:** Ran\_BP1

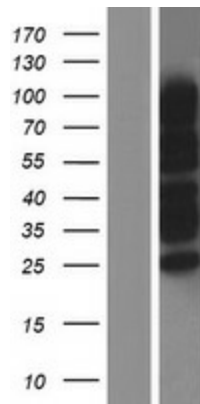
**MW:** 59.5 kDa

**Gene Summary:** This gene encodes a protein with a RanBD1 domain that is found in both the nucleus and cytoplasm. This protein plays a role in nuclear export as part of a heteromeric complex. Alternate transcriptional splice variants, encoding different isoforms, have been characterized. [provided by RefSeq, Jul 2008]

**Product images:**



Circular map for RC211404



Western blot validation of overexpression lysate (Cat# [LY418541]) using anti-DDK antibody (Cat# [TA50011-100]). Left: Cell lysates from untransfected HEK293T cells; Right: Cell lysates from HEK293T cells transfected with RC211404 using transfection reagent MegaTran 2.0 (Cat# [TT210002]).