

## Product datasheet for RC211403

### ZFYVE1 (NM\_178441) Human Tagged ORF Clone

#### Product data:

Product Type:	Expression Plasmids
Product Name:	ZFYVE1 (NM_178441) Human Tagged ORF Clone
Tag:	Myc-DDK
Symbol:	ZFYVE1
Synonyms:	DFCP1; PPP1R172; SR3; TAFF1; ZNFN2A1
Mammalian Cell Selection:	Neomycin
Vector:	pCMV6-Entry (PS100001)
E. coli Selection:	Kanamycin (25 ug/mL)
ORF Nucleotide Sequence:	>RC211403 representing NM_178441 Red=Cloning site Blue=ORF Green=Tags(s)

TTTTGTAATACGACTCACTATAGGGCGCCGGGAATTCGTCGACTGGATCCGGTACCGAGGAGATCTGCC  
GCC**CGGATCGCC**

ATGGCGCACAGCTCCTTTTTCCAGATGAGTATTTACCTGCTCCTCCTGTGCCTCAGCTGTGGGGTTG  
GATGTAAGAAAAGCATGAATCATGGGAAGGAAGGAGTGCCTCATGAAGCCAAGAGCCGCTGCAGATACTC  
CCACCAGTATGACAACCGAGTGTATACCTGCAAGGCCTGCTATGAGAGAGGCGAGGAAGTCAGTGTAGTG  
CCAAAACATCTGCTTCCACTGACTCCCCCTGGATGGGTCTCGAAAATATGCCTGGTCTGGGTATGTGA  
TCGAATGTCCTAACTGTGGCGTGGTCTATCGTAGTCGGCAGTACTGGTTTGGAAACCAAGATCCTGTGGA  
TACGGTGGTGGCGACAGAGATTGTGCATGTGTGGCCTGGAAGTATGGGTTTCTGAAGGACAACAACAAT  
GCTGCCAGCGCCTGTTGGACGGGATGAACTTCATGGCTCAGTCGGTGTCCGAGCTTAGCCTTGGACCCA  
CCAAGGCTGTGACTTCTGGCTGACAGACCAGATCGCCCCCTGCCTACTGGAGGCCAACTCCCAGATTCT  
GAGCTGCAACAAGTGTGCGACGTCCTTTAAAGATAACGACACTAAGCATCACTGCCGAGCCTGTGGGGAG  
GGCTTCTGTGACAGCTGTTTCATCAAAGACTCGGCCAGTGCCTGAGCGGGGCTGGGGCCCTGCGCCAGTGC  
GGTCTGTGACAACTGCTACGAAGCCAGGAACGTCAGTTAGCTGTTACCGAGGCACAAGTGGACGATGA  
AGGTGGAACGCTCATTGCTCGGAAGGTGGGCGAGGCCGTGCAGAACACTCTGGGAGCCGTGGTGACAGCC  
ATTGACATACCCTAGGCTGGTAAAGGACCGGCCAGGCTGCGTACTGGTGCCTGACCAGAAATCC  
TCCACTGCCAACAAGTCCGGAAGGAGTTTCAGCATCAAGCTCTCCAAGCACCCTGCGGGCCTGCGGACA  
GGGCTTCTGTGATGAGTCTCCATGACCGCGGGCTGTTCTTCTCGTGGCTGGGACCATCCCGTCCGA  
GTCTGCTCAACTGCAATAAAAAGCCGGTGACCTT

**ACGCGT**ACGCGGCCGCTCGAGCAGAAACTCATCTCAGAAGAGGATCTGGCAGCAAATGATATCCTGGATT  
ACAAGGATGACGACGATAAGGTTAA



[View online »](#)

**Protein Sequence:** >RC211403 representing NM\_178441  
Red=Cloning site Green=Tags(s)

MAHSSFFPDEYFTCSSLCLSCGVGCKKSMNHGKEGVPHEAKSRCRYSHQYDNRVYTCKACYERGEEVSVV  
 PKTSASTDSPWMGLAKYAWSGYVIECPNCGVVYRSRQYWFGNQDPVDTVVRTEIVHVWPGTDGFLKDNNN  
 AAQRLLDGMNFMAQSVSELSLGPTKAVTSWLTQIAPAYWRPNSQILSCNKCATSFKDNDTKHHCACGE  
 GFCDCSSKTRPVPERGWGPAPVRVCDNCYEARNVQLAVTEAQVDDEGGTLIARKVGEAVQNTLGAVVTA  
 IDIPLGLVKDAARPAYWVPDHEILHCHNCRKEFSIKLSKHHCACGQGFCECSHDDRRVPSRGWDHPVR  
 VCFNCNKKPGDL

TRTRPLEQKLISEEDLAANDILDYKDDDDKV

**Chromatograms:** [https://cdn.origene.com/chromatograms/mk8114\\_g07.zip](https://cdn.origene.com/chromatograms/mk8114_g07.zip)

**Restriction Sites:** SgfI-MluI

**Cloning Scheme:**



\* The last codon before the Stop codon of the ORF

**ACCN:** NM\_178441

**ORF Size:** 1086 bp

**OTI Disclaimer:** The molecular sequence of this clone aligns with the gene accession number as a point of reference only. However, individual transcript sequences of the same gene can differ through naturally occurring variations (e.g. polymorphisms), each with its own valid existence. This clone is substantially in agreement with the reference, but a complete review of all prevailing variants is recommended prior to use. [More info](#)

**OTI Annotation:** This clone was engineered to express the complete ORF with an expression tag. Expression varies depending on the nature of the gene.

**Components:** The ORF clone is ion-exchange column purified and shipped in a 2D barcoded Matrix tube containing 10ug of transfection-ready, dried plasmid DNA (reconstitute with 100 ul of water).

**Reconstitution Method:**

1. Centrifuge at 5,000xg for 5min.
2. Carefully open the tube and add 100ul of sterile water to dissolve the DNA.
3. Close the tube and incubate for 10 minutes at room temperature.
4. Briefly vortex the tube and then do a quick spin (less than 5000xg) to concentrate the liquid at the bottom.
5. Store the suspended plasmid at -20°C. The DNA is stable for at least one year from date of shipping when stored at -20°C.

**RefSeq:** [NM\\_178441.2](#)

**RefSeq Size:** 2627 bp

**RefSeq ORF:** 1089 bp

**Locus ID:** 53349

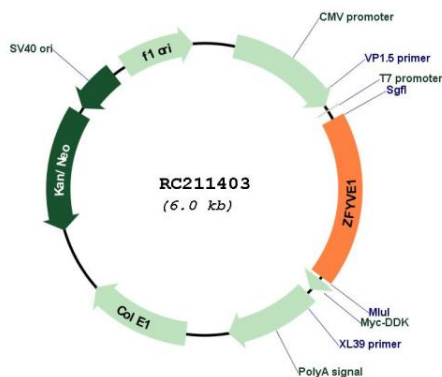
**UniProt ID:** [Q9HBF4](#)

**Cytogenetics:** 14q24.2

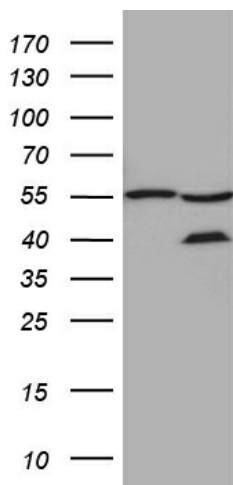
**MW:** 40.1 kDa

**Gene Summary:** The FYVE domain mediates the recruitment of proteins involved in membrane trafficking and cell signaling to phosphatidylinositol 3-phosphate-containing membranes. This protein contains two zinc-binding FYVE domains in tandem and is reported to localize to the Golgi apparatus. Alternative splicing results in multiple transcript variants. [provided by RefSeq, Aug 2013]

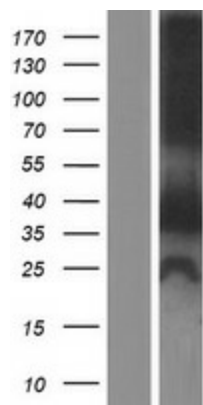
## Product images:



Circular map for RC211403



HEK293T cells were transfected with the pCMV6-ENTRY control (Cat# [PS100001], Left lane) or pCMV6-ENTRY ZFYVE1 (Cat# RC211403, Right lane) cDNA for 48 hrs and lysed. Equivalent amounts of cell lysates (5 ug per lane) were separated by SDS-PAGE and immunoblotted with anti-ZFYVE1 (Cat# [TA810111])(1:500). Positive lysates [LY405962] (100ug) and [LC405962] (20ug) can be purchased separately from OriGene.



Western blot validation of overexpression lysate (Cat# [LY405962]) using anti-DDK antibody (Cat# [TA50011-100]). Left: Cell lysates from untransfected HEK293T cells; Right: Cell lysates from HEK293T cells transfected with RC211403 using transfection reagent MegaTran 2.0 (Cat# [TT210002]).