

Product datasheet for RC211401

PITPNC1 (NM_012417) Human Tagged ORF Clone

Product data:

Product Type:	Expression Plasmids
Product Name:	PITPNC1 (NM_012417) Human Tagged ORF Clone
Tag:	Myc-DDK
Symbol:	PITPNC1
Synonyms:	M-RDGB-beta; MRDGBbeta; RDGB-BETA; RDGBB; RDGBB1
Mammalian Cell Selection:	Neomycin
Vector:	pCMV6-Entry (PS100001)
E. coli Selection:	Kanamycin (25 ug/mL)
ORF Nucleotide Sequence:	>RC211401 representing NM_012417 Red=Cloning site Blue=ORF Green=Tags(s)

TTTTGTAATACGACTCACTATAGGGCGCCGGGAATTCGTCGACTGGATCCGGTACCGAGGAGATCTGCC
GCC**CGGATCGCC**

ATGCTGCTGAAAGAGTACCGGATCTGCATGCCGCTCACCGTAGACGAGTACAAAATTGGACAGCTGTACA
TGATCAGCAAACACAGCCATGAACAGAGTGACCGGGGAGAAGGGTGGAGGTCGTCAGAATGAGCCCTT
TGAGGACCCTCACCATGGCAATGGCAGTTCACCGAGAAGCGGGTGTATCTCAACAGCAAAGTGCCTAGT
TGGGCTAGAGCTGTTGTCCCAAAATATTTTATGTGACAGAGAAGGCTTGAAGTATTATCCCTACACAA
TTACAGAAATACACATGTTCTTTCTGCCGAAATCTCCATTCATATAGAAACCAAGTATGAGGACAACAA
AGGAAGCAATGACACCATTTTCGACAATGAAGCCAAAGACGTGGAGAGAGAAGTTTGCTTTATTGATATT
GCCTGCGATGAAATTCAGAGCGCTACTACAAAGAATCTGAGGATCCTAAGCACTTCAAGTCAGAGAAGA
CAGGACGGGGACAGTTGAGGGAAGGCTGGAGAGATAGTCATCAGCCTATCATGTGCTCCTACAAGCTGGT
GACTGTGAAGTTTGAGGTCTGGGGCTTCAGACCAGAGTGAACAATTTGTACACAAGGTGGTCCGAGAC
ATTCTGCTGATTGGACATAGACAGGCTTTTGCATGGGTTGATGAGTGGTATGACATGACAATGGATGAAG
TCCGAGAATTTGAACGAGCCACTCAGGAAGCCACCAACAAGAAAATCGGCATTTTCCACCTGCAATTTT
TATCTCCAGCATCCCCCTGCTGCCTTCTCCGTCCGAGTGCCTTCTAGTGCTCCATCCACCCCTCTC
TCCACAGACGACCCGAATTTCTGTCCGTTCCCAAAGATCGCCCCGAAAAGTCTGCCCCAGAAAATC
TCACATTCAGACCCTGAGAAAAAGCCACCCGTAATTTACCCGGCATGCACTTTCAGATAAGCCATG
TCGGCCCAAATCTGAG

ACGCGTACGCGGCCGCTCGAGCAGAACTCATCTCAGAAGAGGATCTGGCAGCAAATGATATCCTGGATT
ACAAGGATGACGACGATAAGGTTTAA



[View online »](#)

Protein Sequence: >RC211401 representing NM_012417
Red=Cloning site Green=Tags(s)

MLLKEYRICMPLTVDEYKIGQLYMISKHSHEQSDRGEVGVVQNEPFEDPHHGNGQFTEKRVYLNSKLP
 WARAVVPKIFYVTEKAWNYYPYITIEYTCFLPKFSIHETKYEDNKGSDTIFDNEAKDVEREVCFIDI
 ACDEIPERYKESDPKHFKSEKTGRGQLREGWRDASHQPMCSYKLVTVKFEVWGLQTRVEQFVHKVVRD
 ILLIGHRQAFWVDEWYDMTMDDEVREFERATQEATNKKIGIFPPAISISIPLLPSSVRSAPSSAPSTPL
 STDAPEFLSVPKDRPRKKSAPETLTLDPPEKKATLNLPGMHSSDKPCRPKSE

TRTRPLEQKLISEEDLAANDILDYKDDDDKV

Chromatograms: https://cdn.origene.com/chromatograms/mk8076_b12.zip

Restriction Sites: SgfI-MluI

Cloning Scheme:



ACCN: NM_012417

ORF Size: 996 bp

OTI Disclaimer: The molecular sequence of this clone aligns with the gene accession number as a point of reference only. However, individual transcript sequences of the same gene can differ through naturally occurring variations (e.g. polymorphisms), each with its own valid existence. This clone is substantially in agreement with the reference, but a complete review of all prevailing variants is recommended prior to use. [More info](#)

OTI Annotation: This clone was engineered to express the complete ORF with an expression tag. Expression varies depending on the nature of the gene.

Components: The ORF clone is ion-exchange column purified and shipped in a 2D barcoded Matrix tube containing 10ug of transfection-ready, dried plasmid DNA (reconstitute with 100 ul of water).

Reconstitution Method:

1. Centrifuge at 5,000xg for 5min.
2. Carefully open the tube and add 100ul of sterile water to dissolve the DNA.
3. Close the tube and incubate for 10 minutes at room temperature.
4. Briefly vortex the tube and then do a quick spin (less than 5000xg) to concentrate the liquid at the bottom.
5. Store the suspended plasmid at -20°C. The DNA is stable for at least one year from date of shipping when stored at -20°C.

RefSeq: [NM_012417.4](#)

RefSeq Size: 2005 bp

RefSeq ORF: 999 bp

Locus ID: 26207

UniProt ID: [Q9UKF7](#)

Cytogenetics: 17q24.2

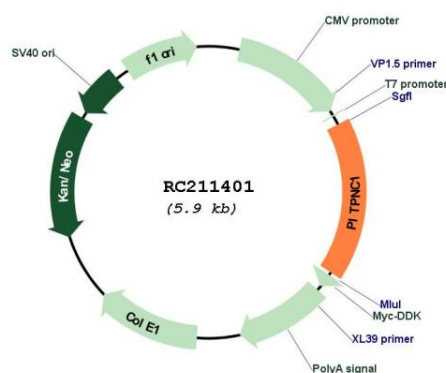
Domains: IP_trans

Protein Families: Ion Channels: Other

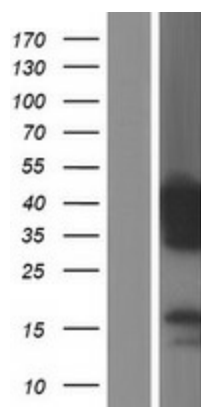
MW: 38.2 kDa

Gene Summary: This gene encodes a member of the phosphatidylinositol transfer protein family. The encoded cytoplasmic protein plays a role in multiple processes including cell signaling and lipid metabolism by facilitating the transfer of phosphatidylinositol between membrane compartments. Alternatively spliced transcript variants encoding multiple isoforms have been observed for this gene, and a pseudogene of this gene is located on the long arm of chromosome 1. [provided by RefSeq, May 2012]

Product images:



Circular map for RC211401



Western blot validation of overexpression lysate (Cat# [LY415776]) using anti-DDK antibody (Cat# [TA50011-100]). Left: Cell lysates from untransfected HEK293T cells; Right: Cell lysates from HEK293T cells transfected with RC211401 using transfection reagent MegaTran 2.0 (Cat# [TT210002]).