

Product datasheet for RC211396

PLXNC1 (NM_005761) Human Tagged ORF Clone

Product data:

Product Type:	Expression Plasmids
Product Name:	PLXNC1 (NM_005761) Human Tagged ORF Clone
Tag:	Myc-DDK
Symbol:	PLXNC1
Synonyms:	CD232; PLXN-C1; VESPR
Mammalian Cell Selection:	Neomycin
Vector:	pCMV6-Entry (PS100001)
E. coli Selection:	Kanamycin (25 ug/mL)
ORF Nucleotide Sequence:	>RC211396 representing NM_005761 Red=Cloning site Blue=ORF Green=Tags(s)

TTTTGTAATACGACTCACTATAGGGCGGCCGGGAATTCGTCGACTGGATCCGGTACCGAGGAGATCTGCC
GCC**CGATCGC**C

ATGGAGGTCTCCCGAGGAAGGCGCCGCCCGCCCCGCGCCCCGAGCGCCACTGCCCTGCTCGCCT
ATCTGCTGGCACTGGCGGCTCCCGCGGGGCGCGGACGAGCCCGTGTGGCGGTGGAGCAAGCCATCGG
AGCCATCGCGGAGCCAGGAGGACGGCGTGTGGCGGAGCGGAGCTGCCTGGACCAGCTGGACTAC
AGCCTGGAGCACAGCCTCTCGCGCTGTACCGGACCAAGCGGGCAACTGCACAGAGCCGGTCTCGCTGG
CGCCCCCGCGCGCCCCGGCCGGGAGCAGCTTCAGCAAGCTGTGCTGCCCTACCGGAGGGGGCGGC
CGGCTCGGGGGCTGTGCTCACCGGCTGGACCTTCGACCGGGGCGCCTGCGAGGTGCGGCCCTGGGC
AACCTGAGCCGCAACTCCCTGCGCAACGGCACCAGGTTGGTGTGCGTCCACCCGAGGGCTCGACGGCCG
GCGTGGTGTACCGCGCGGGCCGGAACAACCGCTGGTACCTGGCGGTGGCCGCCACCTACGTGCTGCCTGA
GCCGGAGACGGCGAGCCGCTGCAACCCCGCGGCATCCGACCACGACAGGCCATCGCGCTCAAGGACAG
GAGGGGCGCAGCCTGGCCACGCAGGAGCTGGGGCGCCTCAAGCTGTGCGAGGGCGCGGGCAGCCTGCACT
TCGTGGACGCCTTCTCTGGAACGGCAGCATCTACTTCCCCTACTACCCCTACAATAACGAGCGGCGC
TGCCACCGGCTGGCCAGCATGGCGGCATCGCGCAGAGCACCAGGTTGCTGTCCAGGGCCAGGCATCC
CTCGACTGCGGCCACGGCCACCCGACGGCCCGCCGCTGCTCCTCTCCAGCCTAGTGGAGGCCCTGG
ACGTCTGGGCGGGAGTGTTCAGCGCGGCCGCTGGAGAGGGCCAGGAGCGGCGCTCCCCACCCAGCGGC
GCTCTGCCTTTTCAAGTGTGAGATCCAGGCGCGCCAAAGGGTCACTGGGACTTCAAGACGGCC
GAGAGCCACTGCAAGAAGGGGATCAACCTGAAAGAGTCCAACCAATCGCATCATCTACCTTGATCCATT
CCGACCTGACATCCGTTTATGGCACCGTGGTAATGAACAGGACTGTTTTATTCTTGGGACTGGAGATGG
CCAGTTACTTAAGTTATTCTTGGTGTGAGATTTGACTTCAAATTGTCCAGAGTTATCTATGAAATTA
GAAGAGACACCTGTTTTCTACAACTCGTTCCTGATCCTGTGAAGAATATCTACATTTATCTAACAGCTG
GGAAAGAGGTGAGGAGAATTCGTGTTGCAAACTGCAATAAACATAAATCCTGTTCCGAGTGTAAACAGC
CACAGACCCTCACTGCGGTTGGTCCATTCCGCTACAAAGGTGCACCTTTCAAGGAGATTGTGATCATCA



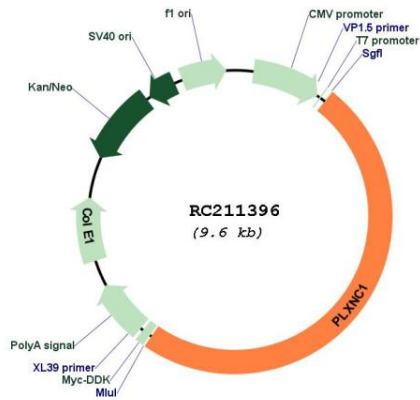
[View online >](#)

GAGAACTTAGAAAAGCTGGCTGGATATTTCTGCTGGAGCAAAAAAGTGCCTAAAATTCAGATAATTCGAA
GCAGTAAAGAAAAGACTACAGTGACTATGGTGGGAAGCTTCTCTCCAAGACACTCAAAGTGCATGGTGAA
GAATGTGGACTCTAGCAGGGAGCTTGCCAGAATAAAAGTCAGCCCAACCGGACCTGCACCTGTAGCATC
CCAACCAGAGCAACCTACAAAGATGTTTCAGTTGTCAACGTGATGTTCTCCTTCGGTTCTTGGAAATTTAT
CAGACAGATTCACTTTACCAACTGCTCATCATTAAAAGAATGCCAGCATGCGTAGAAAAGTGGCTGCGC
GTGGTGTAAAAGTGCAAGAAGGTGATCCACCCCTTACAGCTTTCGACCTTCTGATTATGAGAGAAAC
CAGGAACAGTGTCCAGTGGCTGCGAGAAGACATCAGGAGGAGGAAGACCCAAGGAGAACAAGGGGAACA
GAACCAACCAGGCTTACAGTCTTCTACATTAAGTCCATTGAGCCACAGAAAAGTATCGACATTAGGGAA
AAGCAACGTGATAGTAACGGGAGCAAACTTTACCGGGCATCGAACATCACAATGATCCTGAAAAGGAACC
AGTACCTGTGATAAGGATGTGATACAGTTAGCCATGTGCTAAATGACACCCACATGAAATTTCTCTCTTC
CATCAAGCCGAAAGAAATGAAGGATGTGTGATCCAGTTTGTGGTGGGAACTGCTCTTCTGTGGGATC
CTTATCTACATTGCTCTGCCACATTGTTCCCTTATATTTCTGCTACCACCTGGATCAGTGGTGGTCAA
AATATAACCATGATGGGCAGAAATTTGATGTAATTGACAACCTAATCATTTACATGAATTAAGGAA
ACATAAATGTCTCTGAATATTGTGTGGCGACTTACTGCGGGTTTTAGCCCCAGTTTAAAGAGTTCAAA
AGTGCGCACGAATGCTACTGTGAAGCTGAGAGTACAAGACACCTACTTGGATTGTGGAACCTGCAGTAT
CGGGAGGACCCAGATTCACGGGTATCCGGTGAATCCGAGGTGGACACAGAAGTGAAGTGAATAATC
AAAAAGAAAATGACAACCTCAATATTTCCAAAAAGACATTGAAATTACTCTCTTCCATGGGGAAAATGG
GCAATTAATGTCAGTTTTGAAAATATTACTAGAAATCAAGATCTTACCACCATCCTTTGCAAAATTAAG
GGCATCAAGACTGCAAGCACCATTGCCAATCTTCTAAGAAAGTTCGGGTCAAGCTGGGAAACCTGGAGC
TCTACGTGAGCAGGAGTCAAGTCTTCCACATGGTATTTCTGATTGTGCTCCCTGTCTTGTAGTGAT
TGTCATTTTTGCGGCCGTGGGGTGACCAGGCACAAATCGAAGGAGCTGAGTCGAAACAGAGTCAACAA
CTAGAATTGCTGGAAAGCGAGCTCCGAAAGAGATACGTGACGGCTTGTGAGCTGCAGATGGATAAAT
TGGATGTGGTTGATAGTTTTGGAACGTTCCTTCTTCTGACTACAACATTTTGTCTGAGAATTTCTT
CCCTGAGTCAGGTGGCTTACCCACATCTTCACTGAAGATATGCATAACAGAGACGCCAAGCACAAGAAT
GAAAGTCTCACAGCTTTGGATGCCCTAATCTGTAATAAAAGCTTTCTTGTACTGTCATCCACACCTTG
AAAAGCAGAAGAACTTTCTGTGAAGGACAGGTGTCTGTTTGCCTCCTTCTAACCATTGCACTGCAAAAC
CAAGCTGGTCTACCTGACCAGCATCCTAGAGGTGCTGACCAGGGACTTGATGGAACAGTGTAGTAACATG
CAGCCGAAACTCATGCTGAGACGCACGGAGTCCGTGTCGAAAAACTCCTCACAACTGGATGTCGGTCT
GCCTTTCTGGATTTCTCCGGGAGACTGTCGAGAGCCCTTCTATTTGCTGGTACGACTCTGAACCAGAA
AATTAACAAGGGTCCCGTGGATGTAATCACTTGAAGGCCCTGTACACACTTAATGAAGACTGGCTGTTG
TGGCAGGTTCCGGAATTCAGTACTGTGGCATTAAACGTGCTCTTGAATAATCCCGGAAAACGAGAGTG
CAGATGCTGTCCGAATATTTCACTCAATGTTCTCGACTGTGACACCATTGGCCAAGCCAAGAAAAGAT
TTTCAAGCATTCTTAAGCAAAAATGGCTCCTTATGGACTTCAGCTTAATGAAATTTGGCTTGTAGCTT
CAATGGGCACACGACAGAAAGAACTTCTGGACATCGACAGTTCCCTCCGTGATTCTTGAAGATGGAATCA
CCAAGCTAAACACCATTGGCCACTATGAGATATCAAAATGGATCCACTATAAAAAGTCTTTAAGAAGATAGC
AAATTTTACTTCAGATGTGGAGTACTCGGATGACCAGTCCATTTGATTTTACCAGATTCGGAAGCATT
CAAGATGTGCAAGGAAAGAGACATCGAGGGAAGCACAAGTTCAAAGTAAAAGAAATGTATCTGACAAAGC
TGCTGTGACCAAGGTGGCAATTCATTTCTGTGCTTGAATAACTTTTGAAGCATTGAGTTTACCCAA
CAGCAGAGCTCCATTTGCTATAAAAATCTTTTTGACTTTTTGGACGCCAGGCTGAAAACAAAAAATC
ACAGATCCTGACGTGACATATTTGAAAACAACAGCCTTCTTCTCGCTTCTGGGTAACATCCTGA
AGAACCCTCAGTTTGTCTTTGACATTAAGAAGACACCACATATAGACGGCTGTTTGTGAGTATTGCCCA
GGCATTATGGATGCATTTTCTCTCACAGAGCAGCAACTAGGGAAGGAAGCACCACAACTAATAAGCTTCTC
TATGCCAAGGATATCCCAACCTACAAAGAAGAAGTAAAACTTATTACAAAGCAATCAGGGATTTGCCTC
CATTGTGATCCTCAGAAATGGAAGAATTTTAACTCAGGAATCTAAGAAACATGAAAATGAATTTAATGA
AGAAGTGGCTTACAGAAATTTACAAATACATCGTAAAAATTTTGTGAGATTCTAAATAAAGTAAAGAA
AGAGAACGAGGGCTGGAAGAAGCTCAGAAACAACCTTTCATGTAATAAGTCTTATTTGATGAAAAGAAGA
AATGCAAGTGGATG

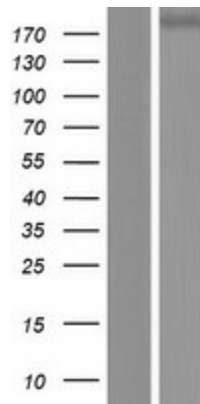
ACGCGTACGCGGCCGCTCGAGCAGAACTCATCTCAGAAGAGGATCTGGCAGCAAATGATATCCTGGATT
ACAAGGATGACGACGATAAGGTTTAA

ORF Size:	4704 bp
OTI Disclaimer:	The molecular sequence of this clone aligns with the gene accession number as a point of reference only. However, individual transcript sequences of the same gene can differ through naturally occurring variations (e.g. polymorphisms), each with its own valid existence. This clone is substantially in agreement with the reference, but a complete review of all prevailing variants is recommended prior to use. More info
OTI Annotation:	This clone was engineered to express the complete ORF with an expression tag. Expression varies depending on the nature of the gene.
Components:	The ORF clone is ion-exchange column purified and shipped in a 2D barcoded Matrix tube containing 10ug of transfection-ready, dried plasmid DNA (reconstitute with 100 ul of water).
Reconstitution Method:	<ol style="list-style-type: none">1. Centrifuge at 5,000xg for 5min.2. Carefully open the tube and add 100ul of sterile water to dissolve the DNA.3. Close the tube and incubate for 10 minutes at room temperature.4. Briefly vortex the tube and then do a quick spin (less than 5000xg) to concentrate the liquid at the bottom.5. Store the suspended plasmid at -20°C. The DNA is stable for at least one year from date of shipping when stored at -20°C.
RefSeq:	NM_005761.1 , NP_005752.1
RefSeq Size:	5121 bp
RefSeq ORF:	4707 bp
Locus ID:	10154
UniProt ID:	O60486
Cytogenetics:	12q22
Domains:	Sema, PSI, IPT, PSI
Protein Families:	Druggable Genome, Transmembrane
Protein Pathways:	Axon guidance
MW:	175.6 kDa
Gene Summary:	This gene encodes a member of the plexin family. Plexins are transmembrane receptors for semaphorins, a large family of proteins that regulate axon guidance, cell motility and migration, and the immune response. The encoded protein and its ligand regulate melanocyte adhesion, and viral semaphorins may modulate the immune response by binding to this receptor. The encoded protein may be a tumor suppressor protein for melanoma. Alternatively spliced transcript variants have been observed for this gene. [provided by RefSeq, Jan 2011]

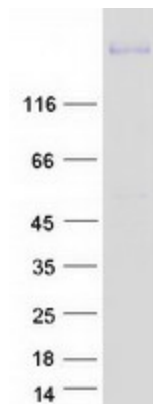
Product images:



Circular map for RC211396



Western blot validation of overexpression lysate (Cat# [LY417085]) using anti-DDK antibody (Cat# [TA50011-100]). Left: Cell lysates from untransfected HEK293T cells; Right: Cell lysates from HEK293T cells transfected with RC211396 using transfection reagent MegaTran 2.0 (Cat# [TT210002]).



Coomassie blue staining of purified PLXNC1 protein (Cat# [TP311396]). The protein was produced from HEK293T cells transfected with PLXNC1 cDNA clone (Cat# RC211396) using MegaTran 2.0 (Cat# [TT210002]).