

## Product datasheet for RC211394

### C10orf120 (NM\_001010912) Human Tagged ORF Clone

#### Product data:

Product Type:	Expression Plasmids
Product Name:	C10orf120 (NM_001010912) Human Tagged ORF Clone
Tag:	Myc-DDK
Symbol:	C10orf120
Synonyms:	bA318C4.1
Mammalian Cell Selection:	Neomycin
Vector:	pCMV6-Entry (PS100001)
E. coli Selection:	Kanamycin (25 ug/mL)
ORF Nucleotide Sequence:	>RC211394 representing NM_001010912 Red=Cloning site Blue=ORF Green=Tags(s)

TTTTGTAATACGACTCACTATAGGGCGGCCGGAATTCGTCGACTGGATCCGGTACCGAGGAGATCTGCC  
GCC**CGATCGCC**

ATGATCAGAGAATGGAAGAATGACTGTCAGAGGATTGAAAAACAGAGGGCTAGTGACACAATGGTGCAAG  
AAAGGAAGAATGAAAAGCCAGTTAGAATATTTAATACCAACTCTTCCTTTTCAGGATCAAGCCCCAACGTG  
TTGCCAAGAGGATCTGAGTTCTGCTTACCCTGGCGGATATGGAGCAAATCTACAGATCAGACCCACGG  
ATTGCCCTTGGGAAATACTCCCCCTTGGAAAAAGAGATCCTACGTCTAGGTGGCATTACACCCATAGCAG  
CAAGAAGGCTTTTGGCTTACAAGCAAGAGGAAGAATGCAGAATGCTCAAGGAACTACAGTTGCTGTCTCC  
GGACTACAACAAGCAATGGAGTATAAAAAGAAACATTCCTCTCCTTGTGCTATTTGTGTACCCCTAGAA  
AAAATATGGACAGCAAAGGTGATTGCGCCCTGGAGGCATTTAAAATGCCACAACGAGAGCAGGTGAACG  
TCAGTAAGCACATAGAGAGGATGAGGCTTGTCTCGGGCTCTGGGAAATCATCAGCCTTTACCTACATTGA  
AAGGTTTACACGCTCCTCATTCTGTCTGGGGTGGGCCTGGGTCCAATGGCAAAAAATAAGGCCAGACGA  
AAGGAAGACAATGACACCCATAATTGTGATGATGCCAACCAAGATAAGAAAGAGGAGGCAGAGGGAA  
AAAACACAAAAAGACGAGAAATAAAAATGAATGTAGTTTTCAAGTCAAAAGAACCAAAAAATGTTTAA  
ATACCATGGAAATGATCGCAAATCATTCTCCCGCAAAGAAACCGGAACGGTCCATCGCAGGCCTAACA  
AACCGAAATCTTTCTGCATATCAGAATCCCTGGTGACTTAATGCTAATGAATCAGATTTTATATCAC  
GGAGAGACCACTTCAGTGATCTGGTCAAGACCTACAGCCTGGAAGAAGAGAGTATCTGAAAGAGCCAT  
CGTAAAGCAACTCCTTATCATTAT

**ACGCGT**ACGCGGCCGCTCGAGCAGAACTCATCTCAGAAGAGGATCTGGCAGCAAATGATATCCTGGATT  
ACAAGGATGACGACGATAAGGTTTAA



[View online »](#)

**Protein Sequence:** >RC211394 representing NM\_001010912  
Red=Cloning site Green=Tags(s)

MIREWKNDQRIEKQRASDTMVQERKNEKPVIRIFNTNSSFQDQAPTCCQEDLSSASPLRIWSKFYRSDPR  
 IALGKYSPLKEILRLGGIHTIAARRLLAYKQEEECRMLKELQLLSPDYKQAMEYKKKHSSPCAICVPLE  
 KIWTAKVIAPLEAFKMPQREQVNVSKHIERMLARALGNHQPLPYIERFTRSSF LSGVGLGPMKNKARR  
 KEDNYDTHNCDDANQDKKEEAEGKNTKRREIKMNVVFKSKEPKCLTYHGNDRKSFLPAKKPERSIAGLT  
 NRNFLCISEFPGDLMLMNQDFISRRDHFSDLVKTYSLSEESIWKERMKATPHYH

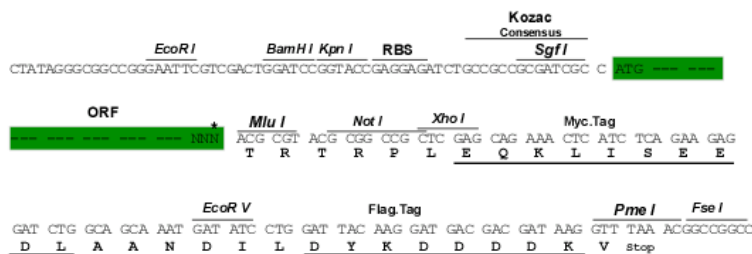
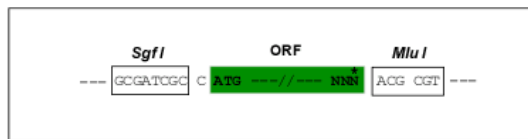
TRTRPLEQKLISEEDLAANDILDYKDDDDKV

**Chromatograms:** [https://cdn.origene.com/chromatograms/ja1275\\_a07.zip](https://cdn.origene.com/chromatograms/ja1275_a07.zip)

**Restriction Sites:** SgfI-MluI

**Cloning Scheme:**

Cloning sites used for ORF Shuttling:



\* The last codon before the Stop codon of the ORF

**ACCN:** NM\_001010912

**ORF Size:** 1005 bp

**OTI Disclaimer:** The molecular sequence of this clone aligns with the gene accession number as a point of reference only. However, individual transcript sequences of the same gene can differ through naturally occurring variations (e.g. polymorphisms), each with its own valid existence. This clone is substantially in agreement with the reference, but a complete review of all prevailing variants is recommended prior to use. [More info](#)

**OTI Annotation:** This clone was engineered to express the complete ORF with an expression tag. Expression varies depending on the nature of the gene.

**Components:** The ORF clone is ion-exchange column purified and shipped in a 2D barcoded Matrix tube containing 10ug of transfection-ready, dried plasmid DNA (reconstitute with 100 ul of water).

- Reconstitution Method:**
1. Centrifuge at 5,000xg for 5min.
  2. Carefully open the tube and add 100ul of sterile water to dissolve the DNA.
  3. Close the tube and incubate for 10 minutes at room temperature.
  4. Briefly vortex the tube and then do a quick spin (less than 5000xg) to concentrate the liquid at the bottom.
  5. Store the suspended plasmid at -20°C. The DNA is stable for at least one year from date of shipping when stored at -20°C.

**RefSeq:** [NM\\_001010912.4](#)

**RefSeq Size:** 1064 bp

**RefSeq ORF:** 1008 bp

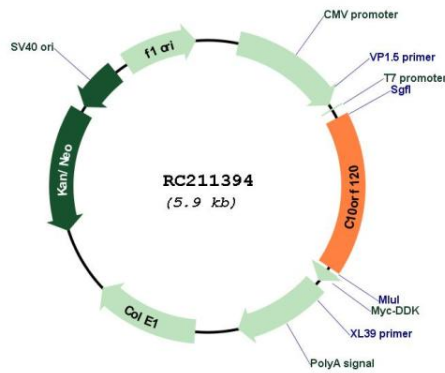
**Locus ID:** 399814

**UniProt ID:** [Q5SQS8](#)

**Cytogenetics:** 10q26.13

**MW:** 39.1 kDa

**Product images:**



Circular map for RC211394