

Product datasheet for RC211383

SYT2 (NM_177402) Human Tagged ORF Clone

Product data:

Product Type:	Expression Plasmids
Product Name:	SYT2 (NM_177402) Human Tagged ORF Clone
Tag:	Myc-DDK
Symbol:	SYT2
Synonyms:	CMS7; MYSPC; SytII
Mammalian Cell Selection:	Neomycin
Vector:	pCMV6-Entry (PS100001)
E. coli Selection:	Kanamycin (25 ug/mL)
ORF Nucleotide Sequence:	>RC211383 ORF sequence Red=Cloning site Blue=ORF Green=Tags(s)

TTTTGTAATACGACTCACTATAGGGCGGCCGGAATTCGTCGACTGGATCCGGTACCGAGGAGATCTGCC
GCC**CGATCGCC**

ATGAGGAACATTTTCAAGAGGAACCCAGGAGCCTATTGTGGCTCCTGCCACCACCACCGCCACGATGCCCA
TTGGACCCGTGGACAACCTCACTGAGAGTGGGGTGTGGGGAGAGCCAGGAGGACATGTTTGCCAAACT
GAAGGAGAAGTTATTCAATGAGATAAACAAGATTCCCTTACCACCCTGGGCACTGATCGCCATTGCTGTG
GTTGCTGGGCTCCTGCTTCTCACCTGCTGCTTCTGCATCTGCAAGAAATGCTGCTGCAAGAAGAAGAAGA
ACAAGAAGGAGAAGGGCAAAGGCATGAAGAATGCCATGAACATGAAGGACATGAAAGGGGTGTCAGGATGA
CGACGACGAGACAGGCTGACTGAGGGGGAAGGTGAAGGGGAGGAGGAGAAAGAGCCAGAGAACCTG
GGCAAACCTGCAGTTTTCCCTGGACTATGATTTTTCAGGCTAATCAGCTTACTGTGGGCTTCTGCAGGCTG
CTGAACTGCCCTGGACATGGGAGGCACCTCAGACCCTTATGTCAAGGTCTTCTCCTTCTGACAA
GAAGAAGAAATATGAGACCAAAGTCCATCGGAAGACACTGAACCTGCCTTCAATGAAACCTTCACTTTC
AAGGTGCCATACCAGGAGCTTGGGGCAAACCTCTGGTGTGGCCATCTATGACTTTGACCGCTTCTCCA
AACATGACATCATTGGAGAGGTAAGGTGCCTATGAACACAGTGGACCTCGGCCAGCCATTGAGGAGTG
GAGACCTGCAAGGCGGGGAAAAGGAGGAGCCGAGAAGCTGGCGACATCTGCACCTCCCTGCGCTAT
GTGCCCACGGCCGGGAAGCTCACTGTCTGCATCCTGGAGGCTAAGAACCTCAAGAAGATGGACGTGGGCG
GCCTTTCAGACCCGTACGTGAAGATCCACCTGATGCAGAATGGCAAGAGGCTCAAGAAGAAGAAGACAAC
CGTGAAGAAGAAGACCCTGAACCCATACTTCAACGAGTCTTTCAGCTTTGAGATCCCCTTCGAGCAGATT
CAGAAAGTCCAGGTAGTGGTCCCGTGCTGGACTATGACAAGCTGGGCAAGAACGAAGCCATAGGCAAGA
TCTTCGTGGCAGCAATGCCACGGGCACAGAGCTGCGGCACTGGTCCGACATGCTGGCAACCCCGGAG
GCCATCGCCAGTGGCACTCGCTCAAGCTGAGGAGGAGGTGGATGCACCTCTGGCAAGAACAAG

AG**CGGACCG**ACGCGTACGCGGCCGCTCGAGCAGAAACTCATCTCAGAAGAGGATCTGGCAGCAAATGATATCC
TGGATTACAAGGATGACGACGATAAGGTTTAA



[View online »](#)

Protein Sequence: >RC211383 protein sequence
Red=Cloning site Green=Tags(s)

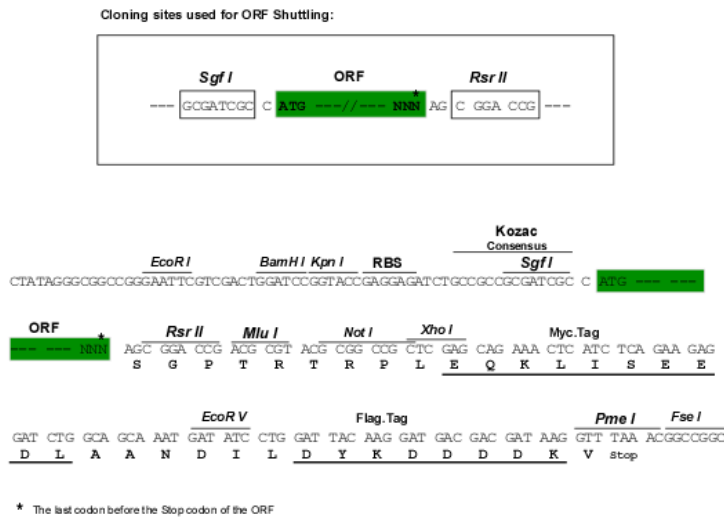
MRNIFKRNQEPVAPATTTATMPIGPVDNSTESGGAGESQEDMFAKLKEKLFNEINKIPLPPWALIAIAV
 VAGLLLLTCCFCICKKCCCKKKKNKKEKKGKGMKNAMNMDKMGQDDDDAETGLTEGEGEGEEKEPENL
 GKLFSLDYDFQANQLTVGVLQAAELPALDMGGTSDPYVKVFLLPDKKKKYETKVHRKTLNPAFNETFTF
 KVPYQELGGKTLVMAIYDFDRFSKHDIIGEVKVPMTVDLGPPIEWRDLQGEKEEPEKLGDICTSLRY
 VPTAGKLTVCILEAKNLKMDVGLSDPYVKIHLMQNGKRLKKKKTTVKKTLPYFNESFSFEIPFEQI
 QKVQVVTVLDYDKLGKNEAIGKIFVGSNATGTELRHWSMLANPRRPIAQWHSCLKPEEEDALLGKNK

SGPTRTRPLEQKLI SEEDLAANDILDYKDDDDKV

Chromatograms: https://cdn.origene.com/chromatograms/mk6621_a04.zip

Restriction Sites: SgfI-RsrII

Cloning Scheme:



ACCN: NM_177402

ORF Size: 1257 bp

OTI Disclaimer: The molecular sequence of this clone aligns with the gene accession number as a point of reference only. However, individual transcript sequences of the same gene can differ through naturally occurring variations (e.g. polymorphisms), each with its own valid existence. This clone is substantially in agreement with the reference, but a complete review of all prevailing variants is recommended prior to use. [More info](#)

OTI Annotation: This clone was engineered to express the complete ORF with an expression tag. Expression varies depending on the nature of the gene.

Components: The ORF clone is ion-exchange column purified and shipped in a 2D barcoded Matrix tube containing 10ug of transfection-ready, dried plasmid DNA (reconstitute with 100 ul of water).

Reconstitution Method:

1. Centrifuge at 5,000xg for 5min.
2. Carefully open the tube and add 100ul of sterile water to dissolve the DNA.
3. Close the tube and incubate for 10 minutes at room temperature.
4. Briefly vortex the tube and then do a quick spin (less than 5000xg) to concentrate the liquid at the bottom.
5. Store the suspended plasmid at -20°C. The DNA is stable for at least one year from date of shipping when stored at -20°C.

RefSeq: [NM_177402.5](#)

RefSeq Size: 7604 bp

RefSeq ORF: 1260 bp

Locus ID: 127833

UniProt ID: [Q8N9I0](#)

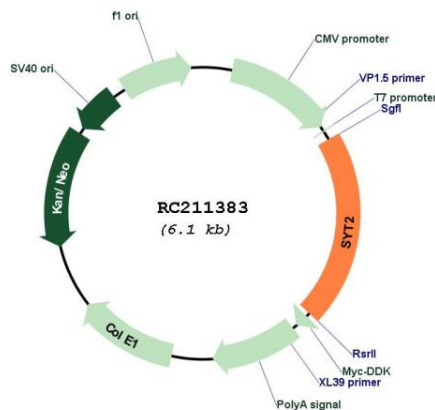
Cytogenetics: 1q32.1

Protein Families: Secreted Protein, Transmembrane

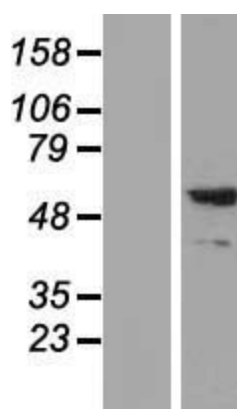
MW: 46.9 kDa

Gene Summary: This gene encodes a synaptic vesicle membrane protein. The encoded protein is thought to function as a calcium sensor in vesicular trafficking and exocytosis. Mutations in this gene are associated with myasthenic syndrome, presynaptic, congenital, with or without motor neuropathy. Alternative splicing results in multiple transcript variants. [provided by RefSeq, Oct 2014]

Product images:



Circular map for RC211383



Western blot validation of overexpression lysate (Cat# [LY427901]) using anti-DDK antibody (Cat# [TA50011-100]). Left: Cell lysates from untransfected HEK293T cells; Right: Cell lysates from HEK293T cells transfected with [RC226544] using transfection reagent MegaTran 2.0 (Cat# [TT210002]).