

Product datasheet for **RC211382**

AGO3 (NM_177422) Human Tagged ORF Clone

Product data:

Product Type:	Expression Plasmids
Product Name:	AGO3 (NM_177422) Human Tagged ORF Clone
Tag:	Myc-DDK
Symbol:	AGO3
Synonyms:	EIF2C3
Mammalian Cell Selection:	Neomycin
Vector:	pCMV6-Entry (PS100001)
E. coli Selection:	Kanamycin (25 ug/mL)



[View online »](#)

ORF Nucleotide Sequence:

>RC211382 representing NM_177422
 Red=Cloning site Blue=ORF Green=Tags(s)

TTTTGTAATACGACTCACTATAGGGCGGCCGGGAATTCGTCGACTGGATCCGGTACCGAGGAGATCTGCC
 GCC**CGGATCGCC**

ATGTGTGAAGTCTTGATATTCATAATATTGATGAGCAACCAAGACCTCTGACTGATTCTCATCGGGTAA
 AATTACCAAAGAGATAAAAGGTTTGAAGTTGAAGTGACTCATTGTGGAACAATGAGACGGAAATACCG
 TGTTTGAATGTAACAAGGAGGCCTGCCAGTCATCAAACCTTTCTTTACAGTTAGAAAACGGCCAAACT
 GTGGAGAGAACAGTAGCGCAGTATTTAGAGAAAAGTATACTCTTCAGCTGAAGTACCCGCACCTCCCT
 GTCTGCAAGTCGGGCAGGAACAGAAACACACCTACCTGCCACTAGAAGTCTGTAATATTGTGGCAGGGCA
 ACGATGTATCAAGAAGCTAACAGACAATCAGACTTCCACTATGATCAAGGCAACAGCAAGATCTGCACCA
 GATAGACAAGAGGAAATTAGCAGATTGGTAAGAAGTGCAAATTATGAAACAGATCCATTTGTTCCAGGAGT
 TTCAATTTAAAGTTCGGGATGAAATGGCTCATGTAAGTGGACGCGTACTCCAGCACCTATGCTCCAGTA
 TGGAGGACGGAATCGGACAGTAGCAACACCGAGCCATGGAGTATGGGACATGCGAGGGAAACAATCCAC
 ACAGGAGTTGAAATCAAATGTGGGCTATCGCTTGTTCACACAGAGGCAAGTGCAGAGAAGAAATAT
 TGAAGGGTTTACAGACCAGCTGCGTAAGATTTCTAAGGATGCAGGGATGCCATCCAGGGCCAGCCATG
 CTTCTGCAAAATGCACAGGGGGCAGACAGCGTAGAGCCCATGTTCCGGCATCTCAAGAACACATATTCT
 GGCCTACAGCTTATTATCGTCATCTGCGGGGGAAGACACCAGTGTATGCGGAAGTAAAACGTGTAGGAG
 ACACACTTTTGGGTATGGCTACACAATGTGTTCAAGTCAAGAATGTAATAAAAACATCTCCTCAAACCTCT
 GTCAAACTTGTGCTAAAGATAAATGTTAAACTCGGAGGGATCAATAATTTCTGTACCTCATCAAAGA
 CCTTCTGTGTTCCAGCAACCAGTGTCTTTTGGGAGCCGATGCTACTCATCCACTGCTGGTGTAGGAA
 AGAAGCCTTCTATTGCTGCTGTTGAGGTAGTATGGATGCACACCAAGCAGACTGTGCCACAGTAAG
 AGTTTCAGAGACCCGACAGGAGATCATCCAGGACTTGGCCTCCATGGTCCGGGAACCTCTTATTTCAATTT
 TATAAGTCAACTCGGTTCAAGCCTACTCGTATCATCTTTTATCGGGATGGTGTTCAGAGGGCAGTTTA
 GGCAGGTATTATATTGAACTACTAGCAATTCGAGAAGCCTGCATCAGTTTGGAGAAAAGACTATCAACC
 TGGAATAACCTACATTGTAGTTCAGAAGAGACATCACACTCGATTATTTTGTGCTGATAGGACAGAAAGG
 GTTGAAGAAGTGGCAATATCCCAGCTGGAACAACAGTTGATACAGACATTACACACCCATATGAGTTCCG
 ATTTTTACCTCTGTAGCCATGCTGGAATACAGGGTACCAGTCGCTTCCACTATCATGTTTTATGGGA
 TGATAACTGCTTACTGCAGATGAACCTCAGCTGCTAACTACCAGCTCTGCCACACTTACGTACGCTGT
 ACACGATCTGTTTCTATACCTGCACCAGCGTATTATGCTCACCTGGTAGCATTAGAGCCAGATATCATC
 TTGTGGACAAAGAACATGACAGTCTGAAGGAAGTACGTTTCAGGACAAAGCAATGGGGCAGATCCACA
 AGCTCTTGCCAAGGCTGTACAGATTCACCAAGATACCTTACGCACAATGTACTTCGCT

AG**CGGACCG**ACGCGTACGCGGCCGCTCGAGCAGAAAACCTCATCTCAGAAGAGGATCTGGCAGCAAATGATATCC
 TGGATTACAAGGATGACGACGATAAGGTTTAA

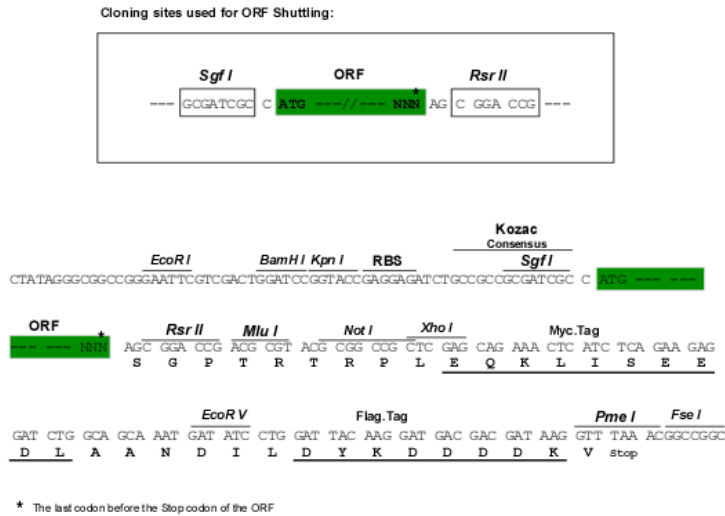
Protein Sequence:

>RC211382 representing NM_177422
 Red=Cloning site Green=Tags(s)

MCEVLDIHNIIDEQPRPLTDSHRVKFTKEIKGLKVEVTHCGTMRRKYRVCNVTRRPASHQTFPLQLENGQT
 VERTVAQYFREKYTLQLKYPHLPCLQVQEQKHTYLPLEVCNIVAGQRCIKKLTDNQSTMIKATARSAP
 DRQEEISRLVRSANYETDPFVQEFQFKVRDEMAHVTGRVLPAPMLQYGGNRNRTVATPSHGVDWDMRGKQFH
 TGVEIKMWAIACFATQRQCREEILKGFDTQLRKISKDAGMPIQGQPCFKYAQGADSVPEMFRHLKNTYS
 GLQLIIVILPGKTPVYAEVKRVGDTLLGMATQCVQVKNVIKTSPTLSNLCLKINVKLGGINNILVPHQR
 PSVFQQPVIIFLGADVTHPPAGDGKKPSIAAVVGSMDAHPSTRYCATVRVQRPRQEI IQDLASMVRELLIQF
 YKSTRFKPTRIIFYRDGVSEGFQFRQVLYELLAIREACISLEKDYQPGITYIVVQKRHHTRLFCADRTER
 VGRSGNIPAGTTVDTDITHPYEFDYLCSHAGIQGTSRPSHYHVLWDDNCFATADELQLLTYQLCHTYVRC
 TRSVSIPAPAYYAHVAFRARYHLVDKEHDSAEGSHVSGSNGRDPQALAKAVQIHQDTLRTMYFA

SGP**TRRRLEQKLI**SEEDLAANDILDYKDDDDKV

Chromatograms: https://cdn.origene.com/chromatograms/mk8070_d05.zip
Restriction Sites: SgfI-RsrII
Cloning Scheme:



ACCN: NM_177422

ORF Size: 1878 bp

OTI Disclaimer: The molecular sequence of this clone aligns with the gene accession number as a point of reference only. However, individual transcript sequences of the same gene can differ through naturally occurring variations (e.g. polymorphisms), each with its own valid existence. This clone is substantially in agreement with the reference, but a complete review of all prevailing variants is recommended prior to use. [More info](#)

OTI Annotation: This clone was engineered to express the complete ORF with an expression tag. Expression varies depending on the nature of the gene.

Components: The ORF clone is ion-exchange column purified and shipped in a 2D barcoded Matrix tube containing 10ug of transfection-ready, dried plasmid DNA (reconstitute with 100 ul of water).

Reconstitution Method:

1. Centrifuge at 5,000xg for 5min.
2. Carefully open the tube and add 100ul of sterile water to dissolve the DNA.
3. Close the tube and incubate for 10 minutes at room temperature.
4. Briefly vortex the tube and then do a quick spin (less than 5000xg) to concentrate the liquid at the bottom.
5. Store the suspended plasmid at -20°C. The DNA is stable for at least one year from date of shipping when stored at -20°C.

Note: Plasmids are not sterile. For experiments where strict sterility is required, filtration with 0.22um filter is required.

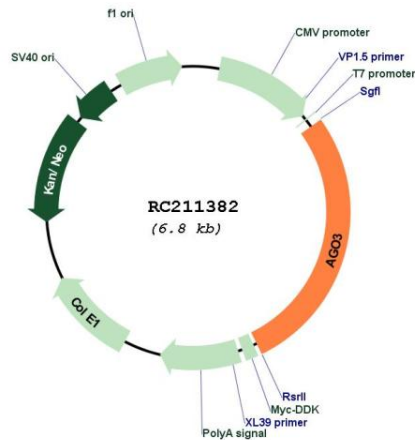
RefSeq: [NM_177422.3](#)

RefSeq Size: 3320 bp

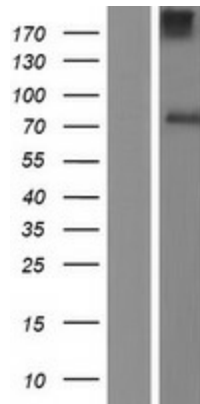
RefSeq ORF: 1881 bp
 Locus ID: 192669
 UniProt ID: [Q9H9G7](#)
 Cytogenetics: 1p34.3
 Protein Families: Druggable Genome
 MW: 71 kDa

Gene Summary: This gene encodes a member of the Argonaute family of proteins which play a role in RNA interference. The encoded protein is highly basic, contains a PAZ domain and a PIWI domain, and may play a role in short-interfering-RNA-mediated gene silencing. This gene is located on chromosome 1 in a tandem cluster of closely related family members including argonaute 4 and eukaryotic translation initiation factor 2C, 1. Two transcript variants encoding distinct isoforms have been identified for this gene. [provided by RefSeq, Jul 2008]

Product images:



Circular map for RC211382



Western blot validation of overexpression lysate (Cat# [LY406159]) using anti-DDK antibody (Cat# [TA50011-100]). Left: Cell lysates from untransfected HEK293T cells; Right: Cell lysates from HEK293T cells transfected with RC211382 using transfection reagent MegaTran 2.0 (Cat# [TT210002]).