

Product datasheet for **RC211381**

FBXO9 (NM_012347) Human Tagged ORF Clone

Product data:

Product Type:	Expression Plasmids
Product Name:	FBXO9 (NM_012347) Human Tagged ORF Clone
Tag:	Myc-DDK
Symbol:	FBXO9
Synonyms:	dj341E18.2; FBX9; NY-REN-57; VCIA1
Mammalian Cell Selection:	Neomycin
Vector:	pCMV6-Entry (PS100001)
E. coli Selection:	Kanamycin (25 ug/mL)



[View online »](#)

ORF Nucleotide Sequence:

>RC211381 representing NM_012347
 Red=Cloning site Blue=ORF Green=Tags(s)

TTTTGTAATACGACTCACTATAGGGCGGCCGGAATTCGTCGACTGGATCCGGTACCGAGGAGATCTGCC
 GCC**CGGATCGCC**

ATGCCTGACATTATTTGGGTTTTCCCCCTCAGGCAGAAGCTGAGGAAGATTGTCTATTCTGATACTGTCA
 GAGCAGATGATGATGAAGAAAATGAAAGTCCTGCTGAAACAGATCTGCAGGCACAACCTCCAGATGTTCCG
 AGCTCAGTGGATGTTTGAACCTGCTCCAGGTGTAAGCTCTAGCAATTTAGAAAATCGACCTGCAGAGCA
 GCAAGAGGCTCTCTCCAGAAAACATCGGCAGATACCAAAGGAAAAACAAGAACAGGCAAAAAGAAGAAAAGG
 CTCGAGAACTCTTCTAAAAGCAGTAGAAGAAGAACAATAAGGAGCTCTCTATGAAGCCATCAAGTTTTTA
 TCGTAGGGCTATGCAACTGTACCTGATATAGAGTTCAAGATTACTTATACCCGGTCTCCAGATGGTGAT
 GCGGTTGGAACAGCTACATTGAAGATAATGATGATGACAGCAAAATGGCAGATCTTTGCTACTTCC
 AGCAGCAACTCACATTTAGGAGTCTGTGCTTAACTGTGTGAGCTGAGCTTGGAGCAGTCAGATTCA
 CATATCAGTGCTGCCAATGGAGGTCCTGATGTACATCTCCGATGGTGGTGTCTAGTGACTTGGACCTC
 AGATCATTGGAGCAGTTGTCGCTGGTGTGACAGAGGATTCTACATCTGTGCGAGAGACCCTGAAATATGGC
 GTCTGGCCTGCTTGAAGTTTGGGGCAGAAGCTGTATTAAGTGTTCCTGACACGCTCTGGAGAGAGAT
 GTTTTTAGAACGGCCTCGTGTTCGGTTTGTATGCGGTGTATATCAGTAAAACACATATATTCGTCAGGG
 GAACAGTCTCTTGATGGTTTCTATAGAGCCTGGCACCAAGTGAATATTACAGGTACATAAGATTCTTTC
 CTGATGGCCATGTGATGATGTTGACAACCCCTGAAGAGCCTCAGTCCATTGTTCCACGTTAAGAAGTAG
 GAATACCAGGACTGATGCAATTTACTGGGTCACTATCGCTTGTACAAGACACAGACAATCAGACAAA
 GTATTTGCTGTAATAACTAAGAAAAAGAAGAAAAACCACTTACTATAAATACAGATATTTTCGTCGTG
 TCCCTGTACAAGAAGCAGATCAGAGTTTTCATGTGGGGCTACAGCTATGTTCCAGTGGTCACCAGAGTT
 CAACAACTCATCTGGATACATCATTCTTGTACATTACTTACAAATCAACTGGTGAGACTGCAGTCAGT
 GCTTTTGAGATTGACAAGATGTACACCCCTTGTCTTCGCCAGAGTAAGGAGCTACACAGCTTTCTCAG
 AAAGGCCTCTG

ACGCGTACGCGGCCGCTCGAGCAGAACTCATCTCAGAAGAGGATCTGGCAGCAATGATATCCTGGATT
 ACAAGGATGACGACGATAAGGTTTAA

Protein Sequence:

>RC211381 representing NM_012347
 Red=Cloning site Green=Tags(s)

MPDIIWVFPQAEAEEDCHSDTVRADDDEENESPAETDLQAQLQMFRAQWMFELAPGVSSSNLENRPCRA
 ARGSLQKTSADTKGKQEQAKEEKARELFLKAVEEEQNGALYEAIKFYRRAMQLVPDIEFKITYTRSPDGD
 GVGNSYIEDNDDSKMADLLSYFQQQLTFQESVLKLCQPELESSQIHSVLPMEVLMYIFRWVSSDLDL
 RSLEQLSLVCRGFYICARDPEIWRLACLKVWGRSCIKLVPYTSWREMFLERPRVRFDGVIYSKTTYIRQG
 EQSLDGFYRAWHQVEYYRYIRFFPDGHVMMLTPEEPQSIVPRLRTRNTRTDAILLGHYRLSQDTONQTK
 VFAVITKKKEEKPLDYKYRYFRVVPVQEQSFHVGLQLCSSGHQRFNKLIIWHHSCHITYKSTGETAVS
 AFEIDKMYTPLFFARVRSYAFSERPL

TRTRPLEQKLISEEDLAANDILDYKDDDDKV

Chromatograms:

https://cdn.origene.com/chromatograms/mk8060_f05.zip

Restriction Sites:

Sgfl-Mlul

Cloning Scheme:


ACCN: NM_012347

ORF Size: 1341 bp

OTI Disclaimer: The molecular sequence of this clone aligns with the gene accession number as a point of reference only. However, individual transcript sequences of the same gene can differ through naturally occurring variations (e.g. polymorphisms), each with its own valid existence. This clone is substantially in agreement with the reference, but a complete review of all prevailing variants is recommended prior to use. [More info](#)

OTI Annotation: This clone was engineered to express the complete ORF with an expression tag. Expression varies depending on the nature of the gene.

Components: The ORF clone is ion-exchange column purified and shipped in a 2D barcoded Matrix tube containing 10ug of transfection-ready, dried plasmid DNA (reconstitute with 100 ul of water).

- Reconstitution Method:**
1. Centrifuge at 5,000xg for 5min.
 2. Carefully open the tube and add 100ul of sterile water to dissolve the DNA.
 3. Close the tube and incubate for 10 minutes at room temperature.
 4. Briefly vortex the tube and then do a quick spin (less than 5000xg) to concentrate the liquid at the bottom.
 5. Store the suspended plasmid at -20°C. The DNA is stable for at least one year from date of shipping when stored at -20°C.

RefSeq: [NM_012347.4](#)

RefSeq Size: 3164 bp

RefSeq ORF: 1344 bp

Locus ID: 26268

UniProt ID: [Q9UK97](#)

Cytogenetics: 6p12.1

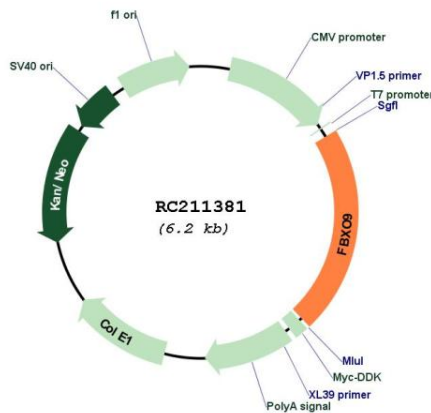
Domains: F-box

Protein Families: Druggable Genome

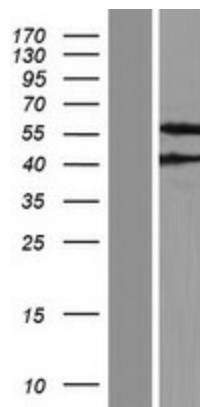
MW: 52.1 kDa

Gene Summary: This gene encodes a member of the F-box protein family which is characterized by an approximately 40 amino acid motif, the F-box. The F-box proteins constitute one of the four subunits of the ubiquitin protein ligase complex called SCFs (SKP1-cullin-F-box), which function in phosphorylation-dependent ubiquitination. The F-box proteins are divided into 3 classes: Fbws containing WD-40 domains, Fbls containing leucine-rich repeats, and Fbxs containing either different protein-protein interaction modules or no recognizable motifs. The protein encoded by this gene belongs to the Fbxs class. Alternative splicing of this gene generates at least 3 transcript variants diverging at the 5' terminus. [provided by RefSeq, Jul 2008]

Product images:



Circular map for RC211381



Western blot validation of overexpression lysate (Cat# [LY415805]) using anti-DDK antibody (Cat# [TA50011-100]). Left: Cell lysates from untransfected HEK293T cells; Right: Cell lysates from HEK293T cells transfected with RC211381 using transfection reagent MegaTran 2.0 (Cat# [TT210002]).