

Product datasheet for RC211373

LY6E (NM_002346) Human Tagged ORF Clone

Product data:

Product Type: Expression Plasmids
Product Name: LY6E (NM_002346) Human Tagged ORF Clone
Tag: Myc-DDK
Symbol: LY6E
Synonyms: RIG-E; RIGE; SCA-2; SCA2; TSA-1
Mammalian Cell Selection: Neomycin
Vector: pCMV6-Entry (PS100001)
E. coli Selection: Kanamycin (25 ug/mL)
ORF Nucleotide Sequence: >RC211373 representing NM_002346
 Red=Cloning site Blue=ORF Green=Tags(s)

TTTTGTAATACGACTCACTATAGGGCGCCGGGAATTCGTCGACTGGATCCGGTACCGAGGAGATCTGCC
 GCC**CGATCGCC**

ATGAAGATCTTCTTGCCAGTGCTGCTGGCTGCCCTTCTGGGTGTGGAGCGAGCCAGCTCGCTGATGTGCT
 TCTCCTGCTTGAACCAGAAGAGCAATCTGTACTGCCTGAAGCCGACCATCTGCTCCGACCAGGACA
 ACTA CTGCGTGACTGTGTCTGCTAGTGCCGGCATTGGGAATCTCGTGACATTTGGCCACAGCCTGAGCAAGACC
 TGTTCCCCGGCCTGCCCCATCCCAGAAGCGTCAATGTTGGTGTGGCTTCCATGGGCATCAGCTGCTGCC
 AGAGCTTTCTGTGCAATTCAGTGCGGCCGATGGCGGGCTGCGGGCAAGCGTCACCCTGCTGGGTGCCGG
 GCTGCTGCTGAGCCTGCTGCCGGCCTGCTGCGGTTTGGCCCC

ACGCGTACGCGGCCGCTCGAGCAGAACTCATCTCAGAAGAGGATCTGGCAGCAAATGATATCCTGGATT
 ACAAGGATGACGACGATAAGGTTTAA

Protein Sequence: >RC211373 representing NM_002346
 Red=Cloning site Green=Tags(s)

MKIFLPVLLAALLGVERASSLMCF SCLNQNLYCLKPTICSDQDNYCVTSASAGIGNLVTFGHSLSKT
 CSPACPIPEGVNVGVASMGISCCQSF LCNFSAADGGLRASVTLLGAGLLLSLLPALLRFGP

TRTRPLEQKLISEEDLAANDILDYKDDDDKV

Restriction Sites: Sgfl-MluI



[View online »](#)

Cloning Scheme:


ACCN: NM_002346

ORF Size: 393 bp

OTI Disclaimer: The molecular sequence of this clone aligns with the gene accession number as a point of reference only. However, individual transcript sequences of the same gene can differ through naturally occurring variations (e.g. polymorphisms), each with its own valid existence. This clone is substantially in agreement with the reference, but a complete review of all prevailing variants is recommended prior to use. [More info](#)

OTI Annotation: This clone was engineered to express the complete ORF with an expression tag. Expression varies depending on the nature of the gene.

Components: The ORF clone is ion-exchange column purified and shipped in a 2D barcoded Matrix tube containing 10ug of transfection-ready, dried plasmid DNA (reconstitute with 100 ul of water).

- Reconstitution Method:**
1. Centrifuge at 5,000xg for 5min.
 2. Carefully open the tube and add 100ul of sterile water to dissolve the DNA.
 3. Close the tube and incubate for 10 minutes at room temperature.
 4. Briefly vortex the tube and then do a quick spin (less than 5000xg) to concentrate the liquid at the bottom.
 5. Store the suspended plasmid at -20°C. The DNA is stable for at least one year from date of shipping when stored at -20°C.

RefSeq: [NM_002346.3](#)

RefSeq Size: 1194 bp

RefSeq ORF: 396 bp

Locus ID: 4061

UniProt ID: [Q16553](#)

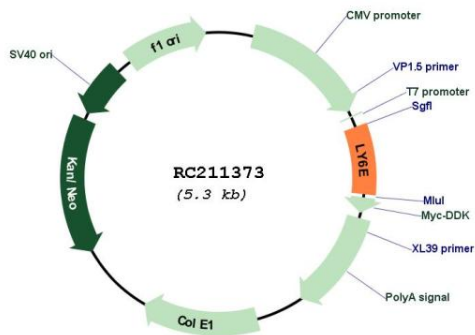
Cytogenetics: 8q24.3

Domains: LU

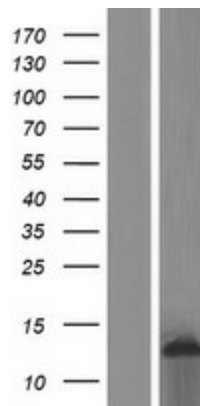
MW: 14 kDa

Gene Summary: Involved in T-cell development. Believed to act as a modulator of nicotinic acetylcholine receptors (nAChRs) activity. In vitro inhibits alpha-3:beta-4-containing nAChRs maximum response.[UniProtKB/Swiss-Prot Function]

Product images:



Circular map for RC211373



Western blot validation of overexpression lysate (Cat# [LY426714]) using anti-DDK antibody (Cat# [TA50011-100]). Left: Cell lysates from untransfected HEK293T cells; Right: Cell lysates from HEK293T cells transfected with [RC225092] using transfection reagent MegaTran 2.0 (Cat# [TT210002]).