

## Product datasheet for RC211357

### MYBPHL (NM\_001010985) Human Tagged ORF Clone

#### Product data:

Product Type:	Expression Plasmids
Product Name:	MYBPHL (NM_001010985) Human Tagged ORF Clone
Tag:	Myc-DDK
Symbol:	MYBPHL
Mammalian Cell Selection:	Neomycin
Vector:	pCMV6-Entry (PS100001)
E. coli Selection:	Kanamycin (25 ug/mL)
ORF Nucleotide Sequence:	>RC211357 ORF sequence Red=Cloning site Blue=ORF Green=Tags(s)

TTTTGTAATACGACTCACTATAGGGCGGCCGGAATTCGTCGACTGGATCCGGTACCGAGGAGATCTGCC  
GCC**CGATCGCC**

ATGGAGGCAGCCACAGCTCCGGAGGTGGCCGAGGATCCAAGCTGAAGGTGAAAGAAGCCAGCCAGCGG  
ATGCTGAACCACCCAGGCTTACCTGGACAGGGGGCTGGCAGCCCACTCCCAGCTCCTGCCCCCTAT  
AGAAGAGCACCCCAAGATCTGGCTACCTCGGGCCCTGAGGCAGACCTACATCCGGAAGGTTGGGGACACA  
GTGAACCTACTAATCCCATTCCAGGGCAAGCCAAACCTCAAGCCATCTGGACACATGATGGCTGTGCCT  
TGGACACCAGGCGTGTGAGTGTGCGGAATGGGGAGCAAGACTCCATCCTTTCATCCGAGAAGCCCAACG  
TGCTGACTCAGGTCGCTACCAACTCCGCGTGCAGCTGGGTGGGCTGGAGGCCACCGCCACCATTGACATC  
CTGGTGATTGAGAGGCCAGGCCCTCCTCAGAGTATTAAGCTGGTGGACGTTTGGGGCTTCAGCGCTACAC  
TGGAAATGGACACCGCCCAAGATACGGGGAATACAGCACTTCTGGGATACACGGTGCAGAAGGCTGACAC  
AAAATCCGGGCTGTGGTTCACGGTGTGGAGCACTATCACCGCACCAGCTGCATCGTCTCTGACCTCATC  
ATCGGCAACTCCTATGCCTTCCGTGTCTTTGCTGAAAACCAAGTGCAGTGCAGTCAAGGAGGAGGAGGAGG  
CCACGGACCTCGCCACATCCAGAAAGCAGCTACTGTTTACAAGACCAAGGGGTTGCCCAACGAGACTT  
CTCTGAAGCCCCAAAGTTTACCCAGCCTCTGGCCAACTGCACTACAGTCAACGGGCTATAATACCCAGCTC  
TTCTGCTGTGTCCGCGCCTCTCCCGGCCCAAGATCATCTGGCTGAAGAACAAGATGGATATCCAAGGCA  
ACCTAAGTACAGAGCCCTGACTCACCTGGAAATCTGCTCCCTAGAGATCCGCAAGCCGGTCCCTTTGA  
TGGAGGCATCTACTTCAAGGCGGTGAACCCCTAGGGGAGGCATCTGTGGACTGTCCGGTGGATGTG  
AAAGTTCCTAAT

**ACGCGT**ACGCGGCCGCTCGAGCAGAAACTCATCTCAGAAGAGGATCTGGCAGCAAATGATATCCTGGATT  
ACAAGGATGACGACGATAAGGTTTAA



[View online »](#)

**Protein Sequence:** >RC211357 protein sequence  
Red=Cloning site Green=Tags(s)

MEATAPEVAAGSKLVKEASPADAEPQASPGQGAGSPTPQLLPPIEEHPKIWLPRALRQTYIRKVGDT  
 VNLLIPFQGKPKPQAIWTHDGCALDTRRVSVRNGEQDSILFIREAQRADSGRYQLRVQLGGLEATATIDI  
 LVIERPGPPQSIKLVVWGF SATLEWTPPQDTGNTALLGYTVQKADTKSGLWFTVLEHYHRTSCIVSDLI  
 IGNSYAFRVFAENQCGLSETAPITTDLAHIQKAATVYKTKGFAQRDFSEAPKFTQPLANCTTVTGYNTQL  
 FCCVRASPRPKIIWLKMKMDIQGNPKYRALTHLGICSLERKPGPFDGGIYTCKAVNPLGEASVDCRVDV  
 KVPN

TRTRPLEQKLISEEDLAANDILDYKDDDDKV

**Chromatograms:** [https://cdn.origene.com/chromatograms/mk6470\\_d06.zip](https://cdn.origene.com/chromatograms/mk6470_d06.zip)

**Restriction Sites:** SgfI-MluI

**Cloning Scheme:**

Cloning sites used for ORF Shuttling:



\* The last codon before the Stop codon of the ORF

**ACCN:** NM\_001010985

**ORF Size:** 1062 bp

**OTI Disclaimer:** The molecular sequence of this clone aligns with the gene accession number as a point of reference only. However, individual transcript sequences of the same gene can differ through naturally occurring variations (e.g. polymorphisms), each with its own valid existence. This clone is substantially in agreement with the reference, but a complete review of all prevailing variants is recommended prior to use. [More info](#)

**OTI Annotation:** This clone was engineered to express the complete ORF with an expression tag. Expression varies depending on the nature of the gene.

**Components:** The ORF clone is ion-exchange column purified and shipped in a 2D barcoded Matrix tube containing 10ug of transfection-ready, dried plasmid DNA (reconstitute with 100 ul of water).

**Reconstitution Method:**

1. Centrifuge at 5,000xg for 5min.
2. Carefully open the tube and add 100ul of sterile water to dissolve the DNA.
3. Close the tube and incubate for 10 minutes at room temperature.
4. Briefly vortex the tube and then do a quick spin (less than 5000xg) to concentrate the liquid at the bottom.
5. Store the suspended plasmid at -20°C. The DNA is stable for at least one year from date of shipping when stored at -20°C.

**RefSeq:** [NM\\_001010985.3](#)

**RefSeq Size:** 1372 bp

**RefSeq ORF:** 1065 bp

**Locus ID:** 343263

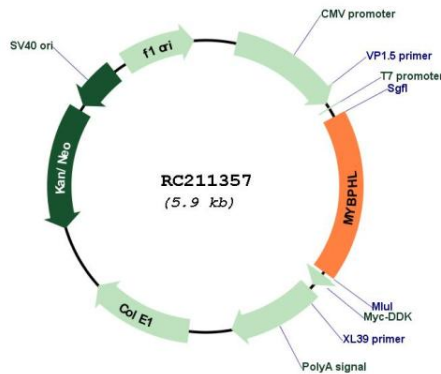
**UniProt ID:** [A2RUH7](#)

**Cytogenetics:** 1p13.3

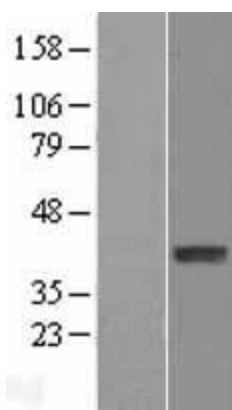
**MW:** 38.7 kDa

**Gene Summary:** This gene encodes a protein with two immunoglobulin superfamily domains and a fibronectin 3 domain. Alternative splicing results in multiple transcript variants. [provided by RefSeq, May 2012]

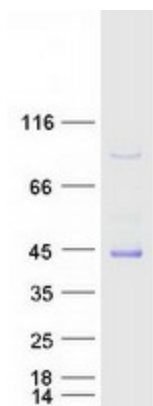
**Product images:**



Circular map for RC211357



Western blot validation of overexpression lysate (Cat# [LY423257]) using anti-DDK antibody (Cat# [TA50011-100]). Left: Cell lysates from untransfected HEK293T cells; Right: Cell lysates from HEK293T cells transfected with RC211357 using transfection reagent MegaTran 2.0 (Cat# [TT210002]).



Coomassie blue staining of purified MYBPHL protein (Cat# [TP311357]). The protein was produced from HEK293T cells transfected with MYBPHL cDNA clone (Cat# RC211357) using MegaTran 2.0 (Cat# [TT210002]).