

Product datasheet for RC211356

OR1L6 (NM_001004453) Human Tagged ORF Clone

Product data:

Product Type:	Expression Plasmids
Product Name:	OR1L6 (NM_001004453) Human Tagged ORF Clone
Tag:	Myc-DDK
Symbol:	OR1L6
Synonyms:	HG16; OR1K1; OR1L7; OR9-30
Mammalian Cell Selection:	Neomycin
Vector:	pCMV6-Entry (PS100001)
E. coli Selection:	Kanamycin (25 ug/mL)
ORF Nucleotide Sequence:	>RC211356 representing NM_001004453 Red=Cloning site Blue=ORF Green=Tags(s)

TTTTGTAATACGACTCACTATAGGGCGGCCGGAATTCGTCGACTGGATCCGGTACCGAGGAGATCTGCC
GCC**CGATCGC**C

ATGAGCTATTTTTACAGGCTTAAGCTTATGAAAGAAGCTGTCTTGGTCAAACCTGCCCTTTACATCTCTCC
CACTGTTCTCCAAACCCTATCCAGGAAGTCCAGAGACATGGAGATAAAGAACTACAGCAGCAGCACCTC
AGGCTTCATCCTCTGGCCTCTTCCAACCCTCAGCTGCAGAAACCTCTTTGGCATCTTCTCATC
ATGTACCTGCTCGCTGCGGTGGGAATGTGCTCATCATCCGGCCATCTACTCTGACCCAGGCTCCACA
CCCCTATGTAATTTTTCTCAGCAACTGTCTTTCATGGATATCTGTTTACAACAGTCATAGTGCCTAA
GATGCTGGTGAATTTTCTATCAGAGACAAAGTTATCTCCTATGTGGGCTGCCTGGCCAGATGACTTC
TTTATGGCATTGGGAACACTGACAGCTACCTGCTGGCCTCTATGGCCATCGACCGGCTGGTGGCCATCT
GCAACCCCTTACACTATGATGTGGTTATGAAACCACGGCATTGCCTGCTCATGCTATTGGGTTCTTGCA
CATCTCCACCTACATCCCTGTCCGCGTGCTACTTATGTCTCGCTTGTCTTCTGTGCCTCTCACATC
ATTAAGCACTTTTTCTGTGACACCCAGCCTGTGCTAAAGCTCTCCTGCTGACACATCTCCAGCCAGA
TGGTGGTATGACTGAGACCTTAGCTGTATTGTGACCCCTTCTGTGTATCATCTTCTCTACCTGCG
AATCATGGTCACTGTGCTCAGAATCCCCCTGCAGCCGGAAGTGAAGGCCCTTCTACCTGTGGCTCC
CACCTCACTGAGTAGCCCTTTCTATGGGAGTATTTATGTCTATTTTAGGCCCTGTCCATGTACT
CAGTGGTTAGGACCGGTAGCCACAGTTATGTACACAGTAGTGACACCCATGCTGAACCCCTTTCATCTA
CAGCCTGAGGAACAAAGATATGAAGAGGGTTTGAAGAAATTACAGGACAGAATTTACCGG

ACGCGTACGCGGCCGCTCGAGCAGAAACTCATCTCAGAAGAGGATCTGGCAGCAATGATATCCTGGATT
ACAAGGATGACGACGATAAGGTTTAA



[View online »](#)

Protein Sequence: >RC211356 representing NM_001004453
Red=Cloning site Green=Tags(s)

MSYFYRLKLMKEAVLVKLPFTSLPLLLQTLSRKSRDMEIKNYSSSTSGFILLGLSSNPQLQKPLFAIFLI
 MYLLAAVGNVLIIPAIYSDPRLHTPMYFFLSNLSFMDICFTTVIVPKMLVNFLSETKVISYVGCLAQMYF
 FMAFGNTDSYLLASMAIDRLVAICNPLHYDVMKPRHCLLMLLGSCSISHLHSLFRVLLMSRLSFCASHI
 IKHFFCDTQPVLKLSGSDTSSSQMVMTETLAVIVTPFLCIIIFSYLRIIMVTVLRIPSAAGKWKAFSTCGS
 HLTAVALFYGSIIVYFRPLSMYSVVRDRVATVMYTVVTPMLNPFYSLRNKDMKRGLKLLQDRIYR

TRTRPLEQKLISEEDLAANDILDYKDDDDKV

Chromatograms: https://cdn.origene.com/chromatograms/mk8002_a02.zip

Restriction Sites: SgfI-MluI

Cloning Scheme:



ACCN: NM_001004453

ORF Size: 1041 bp

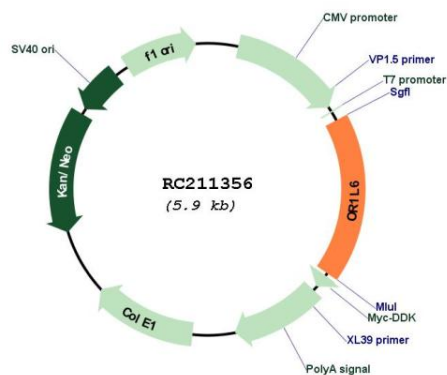
OTI Disclaimer: The molecular sequence of this clone aligns with the gene accession number as a point of reference only. However, individual transcript sequences of the same gene can differ through naturally occurring variations (e.g. polymorphisms), each with its own valid existence. This clone is substantially in agreement with the reference, but a complete review of all prevailing variants is recommended prior to use. [More info](#)

OTI Annotation: This clone was engineered to express the complete ORF with an expression tag. Expression varies depending on the nature of the gene.

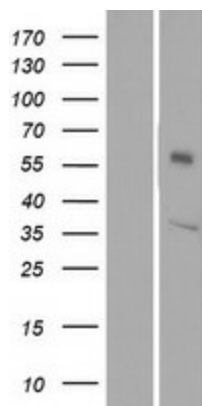
Components: The ORF clone is ion-exchange column purified and shipped in a 2D barcoded Matrix tube containing 10ug of transfection-ready, dried plasmid DNA (reconstitute with 100 ul of water).

Reconstitution Method:	<ol style="list-style-type: none">1. Centrifuge at 5,000xg for 5min.2. Carefully open the tube and add 100ul of sterile water to dissolve the DNA.3. Close the tube and incubate for 10 minutes at room temperature.4. Briefly vortex the tube and then do a quick spin (less than 5000xg) to concentrate the liquid at the bottom.5. Store the suspended plasmid at -20°C. The DNA is stable for at least one year from date of shipping when stored at -20°C.
RefSeq:	<u>NM_001004453.1, NP_001004453.1</u>
RefSeq Size:	936 bp
RefSeq ORF:	936 bp
Locus ID:	392390
UniProt ID:	<u>Q8NGR2</u>
Cytogenetics:	9q33.2
Protein Families:	Transmembrane
Protein Pathways:	Olfactory transduction
MW:	39.5 kDa
Gene Summary:	Olfactory receptors interact with odorant molecules in the nose, to initiate a neuronal response that triggers the perception of a smell. The olfactory receptor proteins are members of a large family of G-protein-coupled receptors (GPCR) arising from single coding-exon genes. Olfactory receptors share a 7-transmembrane domain structure with many neurotransmitter and hormone receptors and are responsible for the recognition and G protein-mediated transduction of odorant signals. The olfactory receptor gene family is the largest in the genome. The nomenclature assigned to the olfactory receptor genes and proteins for this organism is independent of other organisms. [provided by RefSeq, Jul 2008]

Product images:



Circular map for RC211356



Western blot validation of overexpression lysate (Cat# [LY423758]) using anti-DDK antibody (Cat# [TA50011-100]). Left: Cell lysates from untransfected HEK293T cells; Right: Cell lysates from HEK293T cells transfected with RC211356 using transfection reagent MegaTran 2.0 (Cat# [TT210002]).