

## Product datasheet for **RC211351**

### SLC9A8 (NM\_015266) Human Tagged ORF Clone

#### Product data:

Product Type:	Expression Plasmids
Product Name:	SLC9A8 (NM_015266) Human Tagged ORF Clone
Tag:	Myc-DDK
Symbol:	SLC9A8
Synonyms:	NHE-8; NHE8
Mammalian Cell Selection:	Neomycin
Vector:	pCMV6-Entry (PS100001)
E. coli Selection:	Kanamycin (25 ug/mL)



[View online »](#)



Cloning Scheme:



ACCN: NM\_015266

ORF Size: 1743 bp

OTI Disclaimer: The molecular sequence of this clone aligns with the gene accession number as a point of reference only. However, individual transcript sequences of the same gene can differ through naturally occurring variations (e.g. polymorphisms), each with its own valid existence. This clone is substantially in agreement with the reference, but a complete review of all prevailing variants is recommended prior to use. [More info](#)

OTI Annotation: This clone was engineered to express the complete ORF with an expression tag. Expression varies depending on the nature of the gene.

Components: The ORF clone is ion-exchange column purified and shipped in a 2D barcoded Matrix tube containing 10ug of transfection-ready, dried plasmid DNA (reconstitute with 100 ul of water).

- Reconstitution Method:
1. Centrifuge at 5,000xg for 5min.
  2. Carefully open the tube and add 100ul of sterile water to dissolve the DNA.
  3. Close the tube and incubate for 10 minutes at room temperature.
  4. Briefly vortex the tube and then do a quick spin (less than 5000xg) to concentrate the liquid at the bottom.
  5. Store the suspended plasmid at -20°C. The DNA is stable for at least one year from date of shipping when stored at -20°C.

RefSeq: [NM\\_015266.3](#)

RefSeq Size: 6278 bp

RefSeq ORF: 1746 bp

Locus ID: 23315

UniProt ID: [Q9Y2E8](#)

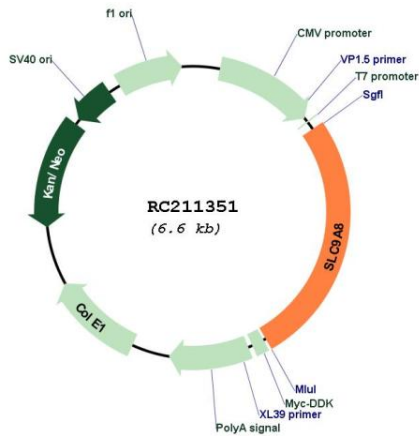
Cytogenetics: 20q13.13

**Protein Families:** Druggable Genome, Transmembrane

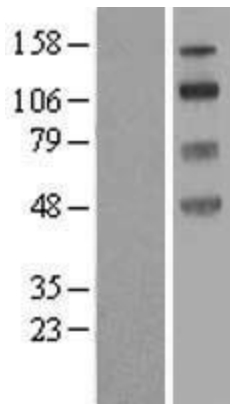
**MW:** 65.4 kDa

**Gene Summary:** Sodium-hydrogen exchangers (NHEs), such as SLC9A8, are integral transmembrane proteins that exchange extracellular Na<sup>+</sup> for intracellular H<sup>+</sup>. NHEs have multiple functions, including intracellular pH homeostasis, cell volume regulation, and electroneutral NaCl absorption in epithelia (Xu et al., 2008 [PubMed 18209477]).[supplied by OMIM, Apr 2009]

**Product images:**



Circular map for RC211351



Western blot validation of overexpression lysate (Cat# [LY414657]) using anti-DDK antibody (Cat# [TA50011-100]). Left: Cell lysates from untransfected HEK293T cells; Right: Cell lysates from HEK293T cells transfected with RC211351 using transfection reagent MegaTran 2.0 (Cat# [TT210002]).