

Product datasheet for RC211343

CLCN1 (NM_000083) Human Tagged ORF Clone

Product data:

Product Type:	Expression Plasmids
Product Name:	CLCN1 (NM_000083) Human Tagged ORF Clone
Tag:	Myc-DDK
Symbol:	CLCN1
Synonyms:	CLC1
Mammalian Cell Selection:	Neomycin
Vector:	pCMV6-Entry (PS100001)
E. coli Selection:	Kanamycin (25 ug/mL)
ORF Nucleotide Sequence:	>RC211343 representing NM_000083 Red=Cloning site Blue=ORF Green=Tags(s)

TTTTGTAATACGACTCACTATAGGGCGGCCGGAATTCGTCGACTGGATCCGGTACCGAGGAGATCTGCC
GCC**CGATCGCC**

ATGGAGCAATCCCGGTCACAGCAGCGTGGGGTGAACAAAGCTGGTGGGGTAGTGACCCCCAGTACCAGT
ATATGCCCTTTGAACACTGCACCAGCTACGGACTGCCCTCTGAGAATGGGGCCTCCAGCACAGGCTCCG
GAAGGATGCAGGCCCCGCCACAACGTCCACCCACACAGATTTATGGCCATCACAAGAACAATTCTCA
GACAGGGAGCAGGACATAGGGATGCCAAGAAGACAGGCTCCAGTTCTACCGTGGACAGCAAGGATGAGG
ATCACTATTCTAAATGTCAAGATTGTATCCACCGCTGGGACAGGTGGTGAAGAAAATTAGGGGAAGA
CTGGATCTTTCTGGTGTCTCTGGGACTGCTGATGGCTCTGGTCAGCTGGAGCATGGACTACGTCACTGCC
AAAAGCCTTCAGGCCTACAAGTGGTCTACGCGCAGATGCAGCCAGCCTTCTCTGCACTTCTGGTCT
GGGTACCTTCCCCTAGTCTCTCATCTCTTACGCGCCCTCTTCTGCCACCTCATCTCTCCCAGGCTGT
TGGCTCTGGAATCCCCGAAATGAAGACAATACTTCGTGGGGTGTCTGAAGGAATACCTCACAATGAAA
GCCTTTGTGGCAAGGTTGTGCGCCTGACTGCGGGCCTGGGCAGTGCCATCCCCGTGGGAAAGAGGGCC
CCTTCGTCCACATTGCCAGCATCTGTGCTGTCTCCTCAGCAAATTCATGTCTGTGTTCTGCGGGGTATA
TGAGCAGCCATACTACTCTGATATCCTGACGGTGGGCTGTGCTGTGGGAGTCGGCTGTTGTTTTGGG
ACACCATTGGAGGAGTCTATTTAGCATCGAGGTCACCTCCACCTACTTGTCTGTTCCGAACTACTGGA
GAGGATTCCTTTCAGCCAGTTTCAGCGCCTTTGTGTTTCGAGTGTGCGAGTGTGGAACAAGGATGCTGT
CACCATCACTGCTCTGTTTCAACAATTTCCGAATGGATTTCCCTTTGACCTGAAGGAACCTACCAGT
TTTGCTGCCATCGGGATTTGCTGTGGGCTCCTGGGAGCTGATTTGTGTATCTGCATCGCCAAGTATGC
TCGGTGTCCGAAAGCACAAAGGCCCTCAGCCAGTTTCTTGCTAAGCACCGCCTGCTGTATCCTGGAATTGT
TACCTTTGTCATTGCCTCATTACCTTCCCACCAGGAATGGGTCAATTCATGGCTGGAGAGTTGATGCC
CGGAAGCCATCAGTACTTTGTTTGACAACAATACATGGGTGAAACACCGGGTATCCTGAGAGCCTGG
GCCAGTCAGTGTGGATTACCCCGGGTCAACGTTGTATCATCATCTTTCTCTTCTGTCATGAA
GTTCTGGATGCCATCGTGGCCACCACTATGCCATACCTGCGGAGGCTTCATGCTGTGTTTGTGCTA



[View online »](#)

GGAGCTGCATTTGGAAGGCTGGTAGGAGAAATCATGGCCATGCTCTTTCCTGATGGTATTTTGTGGATG
 ACATCATCTACAAGATCCTACCTGGGGCTATGCAGTAATTGGAGCAGCAGCGCTGACTGGTGCCGTTTC
 CCACACAGTCTCCACAGCTGTGATTTGCTTCAATTAACGGGTGAGATTGCTCACATCCTGCCATGATG
 GTGGCTGTATCTTGGCCAACATGGTGGCCAGAGCCTGCAGCCCTCTCTATGACAGCATCATCCAGG
 TCAAGAAGCTACCTACTTGCCTGACCTGGCTGGAACAGCTCAGCAAATATACCATCTTTGTTGAGGA
 CATCATGGTACGTGATGTGAAGTTTGTTCAGCTTCTTACACATATGGGGAGTTGCGAACCTGCTCCAG
 ACCACCACAGTCAAGACTTTACCACTGGTTGACTCAAAAGATTCAATGATCCTGCTGGCTCGGTGGAGC
 GGTGCGAACTGCAGGCCCTCCTGCAGCGCCACCTGTGCTGAGCGCAGGCTGCGCGCAGCCCAAGAGAT
 GCGCGGAAGTTGTCGGAGCTGCCTTACGACGGGAAGGCGCGGCTGGCTGGGGAGGGGCTCCCGCGCGG
 CCTCCAGGCCGCCCCGAGTCTTTCGCTTTGTGGATGAGGATGAGGACGAAGATCTCTGGAAGAGCG
 AGCTTCTCCTTCCCTTCTCCTCCTTCTACTACTGCCCTCTGTCCCAGAGAGCCCAATGGGCC
 TCTGCCTGGCCACAAACAGCAGCCGGAAGCACCAGAGCCTGCAGGTCAAAGACCTCCATCTTCCAGTCC
 CTGCTTACTGCTTGTGGCAGAGCTCGCCCCACAAAGAAGAAAACAACCCAGGATTCCACAGATTTAG
 TGGATAACATGTCACCTGAAGAGATTGAGGCTGGGAGCAGGAGCAGCTGAGCCAGCCTGTCTGTTTTGA
 TTCTGCTGATTGACAGTCTCCTTCCAGCTGGTGGAGCAGACAACCTGCACAAGACTCATACCTG
 TTTTACTCCTTGGCCTCCACCTCGCTTACGTGACCAGCATGGGAAGCTCAGGGGCGTCTGGCCCTGG
 AGGAGCTACAGAAGGCCATTGAGGGGCACACCAAGTCTGGGGTGCAGCTCCGCCCTCCCCTTGCCAGCTT
 CCGGAACACGACTTCAACTCGAAAGAGTACCGGGCACCTCCATCTTCTGCAGAGAACTGGAACCTGCCT
 GAGGACAGGCTGGGGCCACTGGAACAGGGGATGTGATTGCTGCCTCCCAGAGACCCCTGTGCCATCTC
 TTCCCAGAGCCCCCTCTCCTTGGCCCCAGGCAAGGTAGAGGGCGAGTTGGAGGAGCTGGAGCTGGT
 GGAGAGTCCAGGGCTGGAAGAGGAGCTGGCCGACATCTTGAGGGCCCCAGCCTGCGATCCACAGACGAG
 GAGGATGAGGATGAAGTATCCTT

ACGCGTACGCGGCGCTCGAGCAGAACTCATCTCAGAAGAGGATCTGGCAGCAAATGATATCCTGGATT
 ACAAGGATGACGACGATGAGTTTAA

Protein Sequence:

>RC211343 representing NM_000083
 Red=Cloning site Green=Tags(s)

MEQSRSQQRGGEQSWWSDPQYQYMPFEHCTSYGLPSENGGLQHRLRKDAGPRHNVHPTQIYGHHEQFS
 DREQDIGMPKKTGSSSTVDSKDEHYSKQDCIHRLGQVVRKLGEDWIFLVLLGLLMALVSWMDYVSA
 KSLQAYKWSYAQMPSLPLQFLVWVTFPLVILFSAFCHLISPQAVSGIPEMKTILRGVVKLEYLTMK
 AFVAKVVALTAGLGSIPVGKEGPFVHIASICAAVLSKFMVFCGVYEQPYYSIDILTVGCAVGVGCCFG
 TPLGGVLFSEIVTSTYFAVRNYWRGFFAATFSAFVFRVLAVWNKDAVITITALFRTNFRMDFPDLKELPA
 FAAIGICGLLGAVFVYLHRQVMLGVRKHKALSQFLAKHRLLYPGIVTFVIASFTFPPGMGQFMAGELMP
 REAISTLFDNNTWVKHAGDPESLQSAVWIHPRVNVVIIIFLFFVMKFWMSIVATTMPICGGFMPVFL
 GAAFGRVLVEIMAMLPDGIILFDDIYKILPGGYAVIGAAALTGAVSHTVSTAVICFELTGQIAHILPMM
 VAVILANMVAQSLQPSLYDSIIQVKKLPYLPDLGWNQLSKYTIFFVEDIMVRDVKFSASYTYGELRLLQ
 TTTVKTLPLVDSKDSMILLGVERSELQALLQRHLCPERRLAAQEMARKLSELPYDGKARLAGEPLGA
 PPRPESFAFVDEDEDEDLGKSELPPSLALHPSTTAPLSPEEPNGPLPGHKQQPEAPEPAGQRPISFQS
 LLHCLLGRARPTKKKTQDSTDLVDNMSPEEIEAWEQEQLSQPVCFDSCCIDQSPFQLVEQTTLHKHTL
 FSLLGLHLAYVTSMGKLRGVLAL EELQKAI EGHKSGVQLRPPLASFRTTSTRKSTGAPPSSAENWLP
 EDRPGATGTGDVIAASPETPVSPSPPEPLSLAPGKVEGELELELVESPGLEELADILQGPSLRSTDE
 EDEDELIL

TRTRPLEQKLI SEEDLAANDILDYKDDDDKV

Chromatograms:

https://cdn.origene.com/chromatograms/mg3775_b01.zip

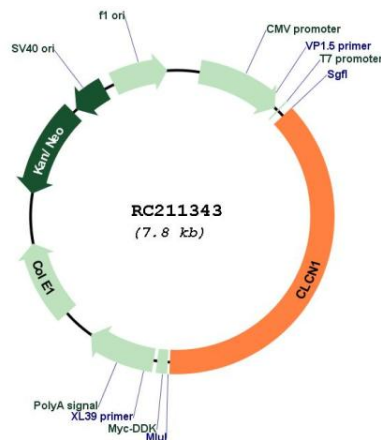
Restriction Sites:

Sgfl-Mlul

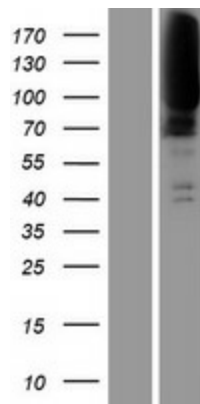
Locus ID: 1180
UniProt ID: [P35523](#)
Cytogenetics: 7q34
Protein Families: Druggable Genome, Ion Channels: Other, Transmembrane
MW: 108.6 kDa

Gene Summary: The CLCN family of voltage-dependent chloride channel genes comprises nine members (CLCN1-7, Ka and Kb) which demonstrate quite diverse functional characteristics while sharing significant sequence homology. The protein encoded by this gene regulates the electric excitability of the skeletal muscle membrane. Mutations in this gene cause two forms of inherited human muscle disorders: recessive generalized myotonia congenita (Becker) and dominant myotonia (Thomsen). Alternative splicing results in multiple transcript variants. [provided by RefSeq, Mar 2012]

Product images:



Circular map for RC211343



Western blot validation of overexpression lysate (Cat# [LY424940]) using anti-DDK antibody (Cat# [TA50011-100]). Left: Cell lysates from untransfected HEK293T cells; Right: Cell lysates from HEK293T cells transfected with RC211343 using transfection reagent MegaTran 2.0 (Cat# [TT210002]).