

Product datasheet for **RC211341**

EPOR (NM_000121) Human Tagged ORF Clone

Product data:

Product Type:	Expression Plasmids
Product Name:	EPOR (NM_000121) Human Tagged ORF Clone
Tag:	Myc-DDK
Symbol:	EPOR
Synonyms:	EPO-R
Mammalian Cell Selection:	Neomycin
Vector:	pCMV6-Entry (PS100001)
E. coli Selection:	Kanamycin (25 ug/mL)



[View online »](#)

ORF Nucleotide Sequence:

>RC211341 representing NM_000121
 Red=Cloning site Blue=ORF Green=Tags(s)

TTTTGTAATACGACTCACTATAGGGCGGCCGGAATTCGTCGACTGGATCCGGTACCGAGGAGATCTGCC
 GCC**CGGATCGCC**

ATGGACCACCTCGGGCGTCCCTCTGGCCCCAGGTCGGCTCCCTTGTCTCCTGCTCGTGGGGCCGCCT
 GGGCGCCCCCGCCTAACCTCCCGAGCCCAAGTTCGAGAGCAAAGCGCCCTTGTGGCGGCCGGGGGCC
 CGAAGAGCTTCTGTGCTTACCGAGCGGTTGGAGGACTTGGTGTGTTTCTGGGAGGAAGCGGCGAGCGCT
 GGGGTGGGCCCGGCAACTACAGCTTCTCTACCAGCTCGAGGATGAGCCATGGAAGCTGTGTGCGCTGC
 ACCAGGCTCCCACGGCTCGTGGTGCCTGCGCTTCTGGTGTTCGCTGCCTACAGCCGACAGCTCGAGCTT
 CGTGCCCTTAGAGTTGCGCGTCACAGCAGCCTCCGGCGCTCCGCGATACACCGTGTATCCACATCAAT
 GAAGTAGTGCTCTAGACGCCCCGTGGGGCTGGTGGCGCGGTTGGCTGACGAGAGCGGCCACGTAGTGT
 TGCCTGGCTCCCGCCCTGAGACCCCATGACGTCTCACATCCGCTACGAGGTGGACGCTCTGGCCGG
 CAACGGCGCAGGGAGCGTACAGAGGGTGGAGATCCTGGAGGGCCGACCGAGTGTGTGCTGAGCAACCTG
 CGGGGCCGAGCGCTACACCTTCGCCCTCCGCGCGCTATGGCTGAGCCGAGCTTCGGCCGCTTCTGGA
 GCGCCTGGTCCGAGCCTGTGTGCTGCTGACGCCTAGCGACCTGGACCCCTCATCTGACGCTCTCCCT
 CATCTCGTGGTTCATCTGGTGTGCTGACCGTGTGCTGCGCTGCTCTCCACCGCCGGGCTCTGAAGCAG
 AAGATCTGGCCTGGCATCCCGAGCCAGAGAGCGAGTTTGAAGGCCTCTTACCACCCACAAGGGTAACT
 TCCAGCTGTGGCTGTACCAGAATGATGGCTGCCTGTGGTGGAGCCCTGCACCCCTTACCGGAGGACCC
 ACCTGCTTCCCTGGAAGTCTCTCAGAGCGCTGCTGGGGACGATGCAGGCAGTGGAGCCGGGACAGAT
 GATGAGGGCCCCCTGCTGGAGCCAGTGGCAGTGAGCATGCCAGGATACCTATCTGGTGTGACAAAT
 GGTGCTGCCCGGAACCCCGCCAGTGGCAGTGGCAGTGGCAGTGGCAGTGGCAGTGGCAGTGGCAGT
 GGATGAAGGCTCAGAAGCATCCTCTGCTCATCTGCTTTGGCCTCGAAGCCAGCCAGAGGGAGCCTCT
 GCTGCCAGCTTTGAGTACACTATCTGGACCCAGCTCCAGCTCTTGCCTCCATGGACTGTGCCCTG
 AGCTGCCCCCTACCCACCCACCTAAAGTACCTGTACCTTGTGGTATCTGACTCTGGCATCTAACTGA
 CTACAGCTCAGGGGACTCCAGGGAGCCCAAGGGGCTTATCCGATGGCCCTACTCCAACCCCTTATGAG
 AACAGCCTTATCCAGCCGCTGAGCCTCTGCCCCAGCTATGTGGCTTGTCT

ACGCGTACGCGGCCGCTCGAGCAGAACTCATCTCAGAAGAGGATCTGGCAGCAAATGATATCTGGATT
 ACAAGGATGACGACGATAAGGTTTAA

Protein Sequence:

>RC211341 representing NM_000121
 Red=Cloning site Green=Tags(s)

MDHLGASLWPQVGSLLCLLLAGAAWAPPNLPDPKFESKAALLAARGPEELLCFTERLEDLVCFWEEAASA
 GVGPGNYSFSYQLEDEPWKLCRLHQAPTARGAVRFWCSLPTADTSSFVPLELRVTAASGAPRYHRVHIHIN
 EVVLLDAPVGLVARLADESGHVLRWLPPPETPMTSHIRYEVDVSAGNGAGSVQRVEILEGRTECVLSNL
 RGRTRYTFAVRARMAEPSFGGFWSAWSEPVSLLTPSDLPLILTLISLILVVILVLLTVLALLSHRRALKQ
 KIWPGIPSESEFEGLFTTHKGNFQLWLQNDGCLWWSPTPFTEDPPASLEVLSERCWGTMQAVEPGTD
 DEGPLEPVGSEHAQDQTYLVLDKWLPRNPPSEDLPGPGGSVDIVAMDEGSEASSSSALASKPSPEGAS
 AASFEYITLDPSSQLLRPWTLCPELPPTPPHLKYLVLVSDSGISTDYSSGDSQGAQGGLSGDPYSNPYE
 NSLIPAAEPLPPSYVACS

TRTRPLEQKLISEEDLAANDILDYKDDDDKV

Chromatograms:

https://cdn.origene.com/chromatograms/mk8120_f08.zip

Restriction Sites:

SgfI-MluI

Cloning Scheme:

ACCN: NM_000121

ORF Size: 1524 bp

OTI Disclaimer: Due to the inherent nature of this plasmid, standard methods to replicate additional amounts of DNA in E. coli are highly likely to result in mutations and/or rearrangements. Therefore, OriGene does not guarantee the capability to replicate this plasmid DNA. Additional amounts of DNA can be purchased from OriGene with batch-specific, full-sequence verification at a reduced cost. Please contact our customer care team at custsupport@origene.com or by calling 301.340.3188 option 3 for pricing and delivery.

The molecular sequence of this clone aligns with the gene accession number as a point of reference only. However, individual transcript sequences of the same gene can differ through naturally occurring variations (e.g. polymorphisms), each with its own valid existence. This clone is substantially in agreement with the reference, but a complete review of all prevailing variants is recommended prior to use. [More info](#)

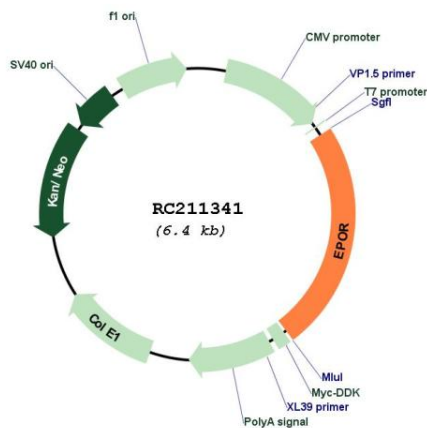
OTI Annotation: This clone was engineered to express the complete ORF with an expression tag. Expression varies depending on the nature of the gene.

Components: The ORF clone is ion-exchange column purified and shipped in a 2D barcoded Matrix tube containing 10ug of transfection-ready, dried plasmid DNA (reconstitute with 100 ul of water).

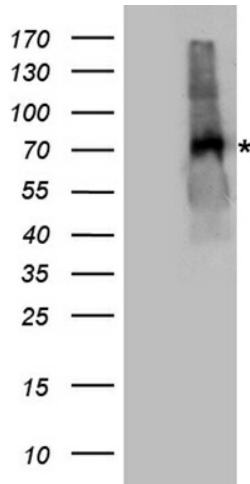
- Reconstitution Method:**
1. Centrifuge at 5,000xg for 5min.
 2. Carefully open the tube and add 100ul of sterile water to dissolve the DNA.
 3. Close the tube and incubate for 10 minutes at room temperature.
 4. Briefly vortex the tube and then do a quick spin (less than 5000xg) to concentrate the liquid at the bottom.
 5. Store the suspended plasmid at -20°C. The DNA is stable for at least one year from date of shipping when stored at -20°C.

RefSeq:	NM_000121.4
RefSeq Size:	2459 bp
RefSeq ORF:	1527 bp
Locus ID:	2057
UniProt ID:	P19235
Cytogenetics:	19p13.2
Domains:	FN3
Protein Families:	Druggable Genome, Secreted Protein, Transmembrane
Protein Pathways:	Cytokine-cytokine receptor interaction, Hematopoietic cell lineage, Jak-STAT signaling pathway
MW:	55.5 kDa
Gene Summary:	This gene encodes the erythropoietin receptor which is a member of the cytokine receptor family. Upon erythropoietin binding, this receptor activates Jak2 tyrosine kinase which activates different intracellular pathways including: Ras/MAP kinase, phosphatidylinositol 3-kinase and STAT transcription factors. The stimulated erythropoietin receptor appears to have a role in erythroid cell survival. Defects in the erythropoietin receptor may produce erythroleukemia and familial erythrocytosis. Dysregulation of this gene may affect the growth of certain tumors. Alternate splicing results in multiple transcript variants.[provided by RefSeq, May 2010]

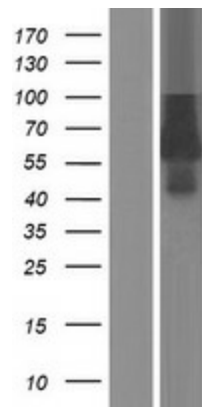
Product images:



Circular map for RC211341



HEK293T cells were transfected with the pCMV6-ENTRY control (Cat# [PS100001], Left lane) or pCMV6-ENTRY EPOR (Cat# RC211341, Right lane) cDNA for 48 hrs and lysed. Equivalent amounts of cell lysates (5 ug per lane) were separated by SDS-PAGE and immunoblotted with anti-EPOR antibody (Cat# [TA890118]). Positive lysates [LY424912] (100ug) and [LC424912] (20ug) can be purchased separately from OriGene.



Western blot validation of overexpression lysate (Cat# [LY424912]) using anti-DDK antibody (Cat# [TA50011-100]). Left: Cell lysates from untransfected HEK293T cells; Right: Cell lysates from HEK293T cells transfected with RC211341 using transfection reagent MegaTran 2.0 (Cat# [TT210002]).