

Product datasheet for RC211339

GPR12 (NM_005288) Human Tagged ORF Clone

Product data:

Product Type:	Expression Plasmids
Product Name:	GPR12 (NM_005288) Human Tagged ORF Clone
Tag:	Myc-DDK
Symbol:	GPR12
Synonyms:	GPCR12; GPCR21; PPP1R84
Mammalian Cell Selection:	Neomycin
Vector:	pCMV6-Entry (PS100001)
E. coli Selection:	Kanamycin (25 ug/mL)
ORF Nucleotide Sequence:	>RC211339 ORF sequence Red=Cloning site Blue=ORF Green=Tags(s)

TTTTGTAATACGACTCACTATAGGGCGGCCGGAATTCGTCGACTGGATCCGGTACCGAGGAGATCTGCC
GCC**CGATCGCC**

ATGAATGAAGACCTGAAGGTCAATTTAAGCGGGCTGCCTCGGGATTATTTAGATGCCGCTGCTGCGGAGA
ACATCTCGGCTGCTGTCTCCTCCCGGTTCTGCCGTAGAGCCAGAGCCTGAGCTCGTAGTCAACCCCTG
GGACATTGTCTTGTGTACCTCGGGAACCCTCATCTCCTGTGAAAATGCCATTGTGGTCTTATCATCTTC
CACAACCCAGCCTGCGAGCACCATGTTCTGCTAATAGGCAGCCTGGCTCTTGACAGCCTGCTGGCCG
GCATTGGACTCATACCAATTTGTTTTGCCTACCTGCTTCAGTCAGAAGCCACCAAGCTGGTCACGAT
CGGCCTCATTGTGCCTCTTTCTGCCTGTCTGCAGCTTGCTGGCTATCACTGTTGACCGCTACCTC
TCACTGTACTACGCTCTGACGTACCATTCGGAGAGGACGGTCACGTTTACCTATGTCATGCTCGTCATGC
TCTGGGGACCTCCATCTGCCTGGGGTCTGCCCCGTCATGGGCTGGAAGTGCCTCCGAGACGAGTCCAC
CTGCAGCGTGGTCAGACCGCTCACCAAGAACAACGCGGCCATCCTCTCGGTGTCCTTCTTTCATGTTT
GCGCTCATGCTTCAGCTCTACATCCAGATCTGTAAGATTGTGATGAGGCACGCCATCAGATAGCCCTGC
AGCACCATTCTGGCCACGTGCACTATGTGACCACCCGAAAGGGTCTCCACCCTGGCTATCATCTCCT
GGGACGTTTGTGCTTGGTGGATGCCTTTCACCCTCTATTCTTGATAGCGGATTACACCTACCCCTCC
ATCTATACCTACGCCACCCTCCTGCCGCCACCTACAATTCCATCATCAACCCGTGCATATATGCTTTCA
GAAACCAAGAGATCCAGAAAGCGCTCTGTCTCATTGCTGCGGGTGCATCCCGTCCAGTCTCGCCAGAG
AGCGCGCTCGCCAGTGATGTG

ACGCGTACGCGGCCGCTCGAGCAGAAACTCATCTCAGAAGAGGATCTGGCAGCAAATGATATCCTGGATT
ACAAGGATGACGACGATAAGGTTTAA



[View online »](#)

Protein Sequence: >RC211339 protein sequence
Red=Cloning site Green=Tags(s)

MNEDLKVNL SGLPRDYLDAAA AENISA AVSSRVP AVEPEPELVVNPWDIVLCTSGTLISCENAIVL IIF
 HNPSLRAPMFL IIGSLALADLLAG IGLITNFVFAYLLQSEATKLVTIGLIVASF SASVCSLLAITVD RYL
 SLYYALTYHSERTVTFTYVMLV MLWGTSICLGLLPVMGW NCLRDESTCSVVRPLTKNNA ILSV SFLFMF
 ALMLQLYIQICKIVMRHAHQIAL QHHFLATSHYVTTRKGVSTLAIILGTF AACWMPFTLYSLIADY TYP S
 IITYATLLPATYNSIINPVIYAFRNQEIQKALCLICCGCIPSSLAQRARSPSDV

TRTRPLEQKLISEEDLAANDILDYKDDDDKV

Chromatograms: https://cdn.origene.com/chromatograms/mk6010_h03.zip

Restriction Sites: SgfI-MluI

Cloning Scheme:



ACCN: NM_005288

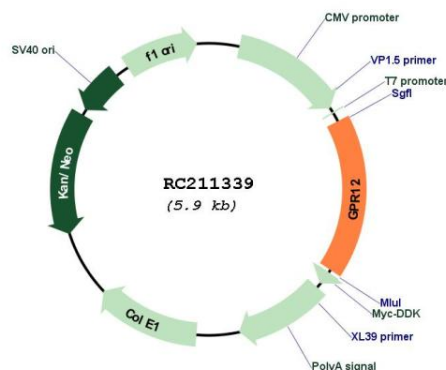
ORF Size: 1002 bp

OTI Disclaimer: Due to the inherent nature of this plasmid, standard methods to replicate additional amounts of DNA in E. coli are highly likely to result in mutations and/or rearrangements. Therefore, OriGene does not guarantee the capability to replicate this plasmid DNA. Additional amounts of DNA can be purchased from OriGene with batch-specific, full-sequence verification at a reduced cost. Please contact our customer care team at custsupport@origene.com or by calling 301.340.3188 option 3 for pricing and delivery.

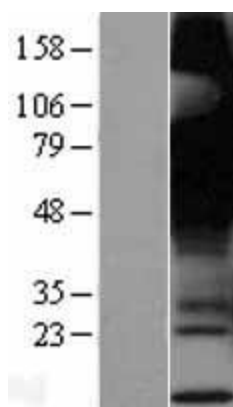
The molecular sequence of this clone aligns with the gene accession number as a point of reference only. However, individual transcript sequences of the same gene can differ through naturally occurring variations (e.g. polymorphisms), each with its own valid existence. This clone is substantially in agreement with the reference, but a complete review of all prevailing variants is recommended prior to use. [More info](#)

OTI Annotation:	This clone was engineered to express the complete ORF with an expression tag. Expression varies depending on the nature of the gene.
Components:	The ORF clone is ion-exchange column purified and shipped in a 2D barcoded Matrix tube containing 10ug of transfection-ready, dried plasmid DNA (reconstitute with 100 ul of water).
Reconstitution Method:	<ol style="list-style-type: none">1. Centrifuge at 5,000xg for 5min.2. Carefully open the tube and add 100ul of sterile water to dissolve the DNA.3. Close the tube and incubate for 10 minutes at room temperature.4. Briefly vortex the tube and then do a quick spin (less than 5000xg) to concentrate the liquid at the bottom.5. Store the suspended plasmid at -20°C. The DNA is stable for at least one year from date of shipping when stored at -20°C.
RefSeq:	NM_005288.4
RefSeq Size:	4863 bp
RefSeq ORF:	1005 bp
Locus ID:	2835
UniProt ID:	P47775
Cytogenetics:	13q12.13
Domains:	7tm_1
Protein Families:	Druggable Genome, GPCR, Transmembrane
MW:	36.7 kDa
Gene Summary:	Promotes neurite outgrowth and blocks myelin inhibition in neurons (By similarity). Receptor with constitutive G(s) signaling activity that stimulates cyclic AMP production. [UniProtKB/Swiss-Prot Function]

Product images:



Circular map for RC211339



Western blot validation of overexpression lysate (Cat# [LY401629]) using anti-DDK antibody (Cat# [TA50011-100]). Left: Cell lysates from untransfected HEK293T cells; Right: Cell lysates from HEK293T cells transfected with RC211339 using transfection reagent MegaTran 2.0 (Cat# [TT210002]).