

Product datasheet for **RC211333L2V**

GLP1R (NM_002062) Human Tagged ORF Clone Lentiviral Particle

Product data:

Product Type:	Lentiviral Particles
Product Name:	GLP1R (NM_002062) Human Tagged ORF Clone Lentiviral Particle
Symbol:	GLP1R
Synonyms:	GLP-1; GLP-1-R; GLP-1R
Mammalian Cell Selection:	None
Vector:	pLenti-C-mGFP (PS100071)
Tag:	mGFP
ACCN:	NM_002062
ORF Size:	1389 bp
ORF Nucleotide Sequence:	The ORF insert of this clone is exactly the same as(RC211333).
OTI Disclaimer:	The molecular sequence of this clone aligns with the gene accession number as a point of reference only. However, individual transcript sequences of the same gene can differ through naturally occurring variations (e.g. polymorphisms), each with its own valid existence. This clone is substantially in agreement with the reference, but a complete review of all prevailing variants is recommended prior to use. More info
OTI Annotation:	This clone was engineered to express the complete ORF with an expression tag. Expression varies depending on the nature of the gene.
RefSeq:	NM_002062.2
RefSeq Size:	3071 bp
RefSeq ORF:	1392 bp
Locus ID:	2740
UniProt ID:	P43220
Cytogenetics:	6p21.2
Protein Families:	Druggable Genome, ES Cell Differentiation/IPS, GPCR, Transmembrane
Protein Pathways:	Neuroactive ligand-receptor interaction

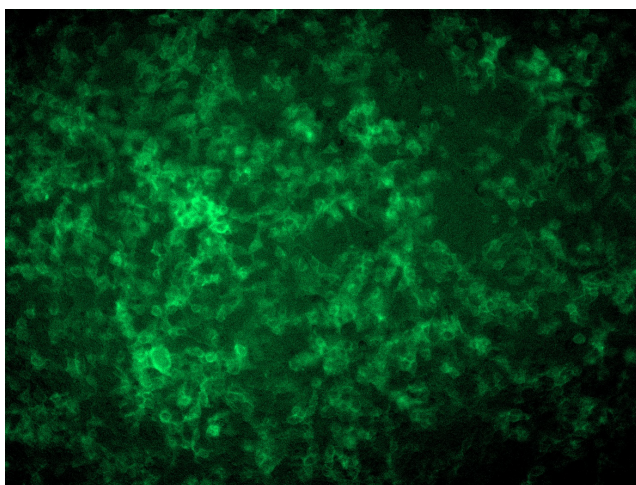


[View online »](#)

MW: 52.8 kDa

Gene Summary: This gene encodes a 7-transmembrane protein that functions as a receptor for glucagon-like peptide 1 (GLP-1) hormone, which stimulates glucose-induced insulin secretion. This receptor, which functions at the cell surface, becomes internalized in response to GLP-1 and GLP-1 analogs, and it plays an important role in the signaling cascades leading to insulin secretion. It also displays neuroprotective effects in animal models. Polymorphisms in this gene are associated with diabetes. The protein is an important drug target for the treatment of type 2 diabetes and stroke. Alternative splicing of this gene results in multiple transcript variants. [provided by RefSeq, Apr 2016]

Product images:



[RC211333L2] was used to prepare Lentiviral particles using [TR30037] packaging kit. HEK293T cells were transduced with RC211333L2V particle to overexpress human GLP1R-mGFP fusion protein.