

Product datasheet for **RC211333**

GLP1R (NM_002062) Human Tagged ORF Clone

Product data:

Product Type:	Expression Plasmids
Product Name:	GLP1R (NM_002062) Human Tagged ORF Clone
Tag:	Myc-DDK
Symbol:	GLP1R
Synonyms:	GLP-1; GLP-1-R; GLP-1R
Mammalian Cell Selection:	Neomycin
Vector:	pCMV6-Entry (PS100001)
E. coli Selection:	Kanamycin (25 ug/mL)



[View online »](#)

ORF Nucleotide Sequence:

>RC211333 representing NM_002062
 Red=Cloning site Blue=ORF Green=Tags(s)

TTTTGTAATACGACTCACTATAGGGCGGCCGGGAATTCGTGACTGGATCCGGTACCGAGGAGATCTGCC
 GCC**CGGATCGCC**

ATGGCCGGCGCCCCGGCCCGCTGCGCCTTGCCTGCTGCTCGGGATGGTGGCAGGGCCGGCCCC
 GCCCCAGGGTGCCTACTGTGCCCTCTGGGAGACGGTGCAGAAATGGCGAGAATACCGACGCCAGTGCCA
 GCGCTCCCTGACTGAGGATCCACCTCCTGCCACAGACTTGTCTGCAACCGGACCTTCGATGAATACGCC
 TGCTGGCCAGATGGGAGCCAGGCTCGTTCGTGAATGTCAGCTGCCCTGGTACCTGCCCTGGCCAGCA
 GTGTGCCCGAGGGCCACGTGTACCGTTCTGCACAGCTGAAGGCCTCTGGCTGCAGAAGGACAACCCAG
 CCTGCCCTGGAGGGACTTGTGGAGTGCAGGAGTCCAAGCGAGGGGAGAGAAGCTCCCCGGAGGAGCAG
 CTCCTGTTCTCTACATCATCTACACGGTGGGCTACGACTCTCCTTCTCTGCTCTGTTATCGCCTCTG
 CGATCCTCCTCGGCTTACAGACCTGACTGCACCAGAACTACATCCACCTGAACCTGTTTGCATCCTT
 CATCCTGCGAGCATTGTCGGTCTTCATCAAGGACGAGCCCTGAAGTGGATGTATAGCACAGCCGCCAG
 CAGCACCAGTGGGATGGGCTCCTCCTACCAGGACTCTCTGAGCTGCCGCTGGTGTTCCTGCTCATGC
 AGTACTGTGTGGCGCCAATTAATACTGCTCTTGGTGGAGGGCGGTACCTGTACACACTGCTGGCCTT
 CTCGGTCTTCTGAGCAATGGATCTTACGGCTTACGTGAGCATAGGCTGGGGTGTTCCTGCTGTTT
 GTTGTCCCCTGGGGCATTGTCAAGTACCTCTATGAGGACGAGGGCTGCTGGACCAGGAACCCAACATGA
 ACTACTGGCTCATTATCCGGCTGCCATTCTCTTTGGCATTGGGGTGAACCTCCTCATCTTTGTTCCGGT
 CATCTGCATCGTGGTATCCAACTGAAGCCAATCTCATGTGCAAGACAGACATCAAATGCAGACTTGCC
 AAGTCCACGCTGACACTCATCCCCTGCTGGGGACTCATGAGGTATCTTTGCCTTTGTGATGGACGAGC
 ACGCCCGGGGACCCTGCGCTTCAAGCTGTTTACAGAGCTCTCCTTACCTCCTCCAGGGGCTGAT
 GGTGGCCATATTACTGCTTTGTCAACAATGAGGTCCAGCTGGAATTTGGAAGAGCTGGGAGCGCTGG
 CGGCTTGAAGCACTGCACATCCAGAGGGACAGCAGCATGAAGCCCTCAAGTGTCCACCAGCAGCCTGA
 GCAGTGGAGCCACGGCGGCAGCAGCATGTACACAGCCACTTGCCAGGCCTCCTGCAGC

ACGCGTACGCGGCCGCTCGAGCAGAACTCATCTCAGAAGAGGATCTGGCAGCAAATGATATCCTGGATT
 ACAAGGATGACGACGATAAGGTTTAA

Protein Sequence:

>RC211333 representing NM_002062
 Red=Cloning site Green=Tags(s)

MAGAPGPLRLALLLLGMVGRAGPRPQGATVSLWETVQKWREYRRQCQRSLTEDPPPATDLFCNRTFDEYA
 CWPDPGEPGSFVNVSCPWYLPWASSVPQGHVYRFCTAEGWLQKDNSSLPWRDLSECEESKRGRSSPEEQ
 LLLFLYIIYTVGYALSFSALVIASAILLGFRLHCTRNYIHLNLFASFILRALSVFIKDAALKWMYSTAAQ
 QHQWDGLLSYQDSLSCRLVFLMQYCAANYWLLVEGVLYTLALAFSVFSEQWIFRLYVSIWGVPLLF
 VVPWGIKYLVEDEGCWTRNSNMNYWLIIRLPILFGIGNFLIFVRVICIVVSKLKANLMCKTDIKCRLA
 KSTLTLIPLLGTHEVIFAFVMDHARGTLRFIKLFTLSFTSFQGLMVAIILYCFVNNEVQLEFRKSWERW
 RLEHLHIQRDSSMKPLKPTSSLSSGATAGSSMYTATCQASCS

TRTRPLEQKLISEEDLAANDILDYKDDDDKV

Chromatograms:

https://cdn.origene.com/chromatograms/mg2455_g02.zip

Restriction Sites:

Sgfl-Mlul

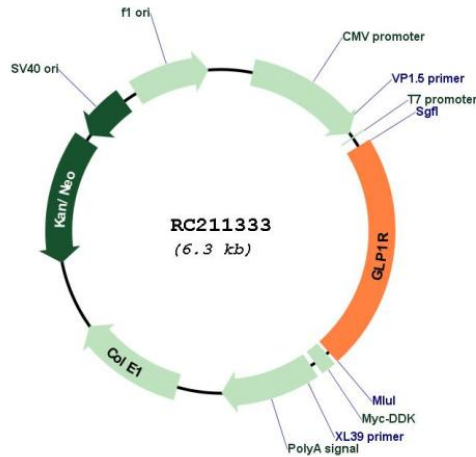
Cloning Scheme:

Cloning sites used for ORF Shuttling:



* The last codon before the Stop codon of the ORF

Plasmid Map:



ACCN: NM_002062

ORF Size: 1389 bp

OTI Disclaimer: The molecular sequence of this clone aligns with the gene accession number as a point of reference only. However, individual transcript sequences of the same gene can differ through naturally occurring variations (e.g. polymorphisms), each with its own valid existence. This clone is substantially in agreement with the reference, but a complete review of all prevailing variants is recommended prior to use. [More info](#)

OTI Annotation: This clone was engineered to express the complete ORF with an expression tag. Expression varies depending on the nature of the gene.

Components: The ORF clone is ion-exchange column purified and shipped in a 2D barcoded Matrix tube containing 10ug of transfection-ready, dried plasmid DNA (reconstitute with 100 ul of water).

Reconstitution Method:

1. Centrifuge at 5,000xg for 5min.
2. Carefully open the tube and add 100ul of sterile water to dissolve the DNA.
3. Close the tube and incubate for 10 minutes at room temperature.
4. Briefly vortex the tube and then do a quick spin (less than 5000xg) to concentrate the liquid at the bottom.
5. Store the suspended plasmid at -20°C. The DNA is stable for at least one year from date of shipping when stored at -20°C.

RefSeq: [NM_002062.5](#)

RefSeq Size: 3071 bp

RefSeq ORF: 1392 bp

Locus ID: 2740

UniProt ID: [P43220](#)

Cytogenetics: 6p21.2

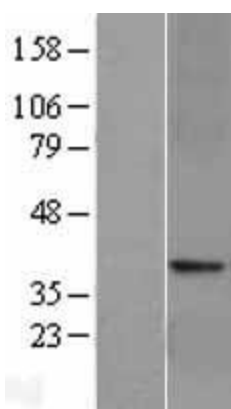
Protein Families: Druggable Genome, ES Cell Differentiation/IPS, GPCR, Transmembrane

Protein Pathways: Neuroactive ligand-receptor interaction

MW: 52.8 kDa

Gene Summary: This gene encodes a 7-transmembrane protein that functions as a receptor for glucagon-like peptide 1 (GLP-1) hormone, which stimulates glucose-induced insulin secretion. This receptor, which functions at the cell surface, becomes internalized in response to GLP-1 and GLP-1 analogs, and it plays an important role in the signaling cascades leading to insulin secretion. It also displays neuroprotective effects in animal models. Polymorphisms in this gene are associated with diabetes. The protein is an important drug target for the treatment of type 2 diabetes and stroke. Alternative splicing of this gene results in multiple transcript variants. [provided by RefSeq, Apr 2016]

Product images:



Western blot validation of overexpression lysate (Cat# [LY400753]) using anti-DDK antibody (Cat# [TA50011-100]). Left: Cell lysates from untransfected HEK293T cells; Right: Cell lysates from HEK293T cells transfected with RC211333 using transfection reagent MegaTran 2.0 (Cat# [TT210002]).