

Product datasheet for **RC211330**

CCDC27 (NM_152492) Human Tagged ORF Clone

Product data:

Product Type:	Expression Plasmids
Product Name:	CCDC27 (NM_152492) Human Tagged ORF Clone
Tag:	Myc-DDK
Symbol:	CCDC27
Mammalian Cell Selection:	Neomycin
Vector:	pCMV6-Entry (PS100001)
E. coli Selection:	Kanamycin (25 ug/mL)



[View online »](#)

ORF Nucleotide
Sequence:

>RC211330 ORF sequence
Red=Cloning site Blue=ORF Green=Tags(s)

TTTTGTAATACGACTCACTATAGGGCGGCCGGGAATTCGTCGACTGGATCCGGTACCGAGGAGATCTGCC
GCCGCGATCGCC

ATGTTTCGAGGCCATCTTCCCCTCCACACCCCAAGCCAGGCTGAAGAGAGATCCACGGGAAAAGCCGGGCC
TGTCTCATTAGGTCCACATTCAGGCAACAAAGCTCACTTGGTCTTTGCATCCCACGCCTCATGTTACC
TAAGGAGGCCAGCCCGTCTGAGAGGCACAGTTCGATGTCCAGCTCGATGGCCAGGGCCCTGGTGCTCCTC
CAGAGCATGGCCAGCCGGGACGCCCGGTGCCAGAATGGAAACCGCACAAAAGCCACGCACGCTCAGCA
AGTCGGTCCAGACCATCAGCCGCTACTACAGGAAGACGAGTGAACCAAGGATGCCGCCAGCCTCACCGG
CTTCATGTCCAAAATGAACTTCGAAGGGTCTTCCCCACGCATCCTGACTGCCCCAGTTTCAGCACCAGG
GCCACATCCATGTCCACTGTGGTTCACCCACTGAGGCCGATTTGTCCGGAGAGATTGACAACAGCTCGG
AGACCTGGAGAGGCACCCAGGACCTGTTCTTGGCCAGGCGGGCTCAGACACGAACGTGGACGGGTACCT
CCTTCCCTTCAGTAAGAGCATCTGCGAGTTCGATTACTTCCGGAAGAGGAGAAAAATCCAGACTTTGAGT
CCGGTCACCAGCAGCTCAGTCGCATCTCAGAGCTGCCTGAGAAAGAGGATGCCCTGGTACCTCTCAGTCA
TCCACGAGAAGGATCACTGCCTGTCTGAGCTGGAGATACAGGTTTCAAGAAAGACGAGGAGATCCTGCT
GCTCCAGGAGGAGAGGGAGGCCCTGAAGACGCAGCTGAAATGCCTTCTGAAAGGCAAAGGCCAAGAGACA
TCCATGTCCCCAGGCAGGAGGGAGCAGCTCTCAGACGCTTCGCTGAAGCTGGGCAGGCTGAGCCTCCTGA
AGGCCTTCTCCAGACATGAGGAGGAGCTGCAGCACTGGTGGCAGATGCAGGAGGAGTCTGCGGCACCCGA
GAGGGCAAGGAGCCCGACCTGGGAGGTGGCAGGAGGACGAGGGCTGGAAGGGGAGCCCGATGGGGTG
GAGGACATGGGTCCCTGGGAGGTGTGAGCCAGATGGGATCCGTGCATGAGGAGGGAAGCAGGAGGAGG
AAGAGGAGGAAGGGGACAGGGATGAGACTCAGAGGAAAGGAGCTGCCGAGGAAGAGGAGATCCCCAG
GAGAAGGGCCTCCTCCCTGGCCGAGTCGTTTGGAGGAGGAGCTGCTGGCCAGCTGGAGGAGTACGAGCAG
GTCATCCTGGACTTCCAGTTCAACCTGGAGGCCACCAGGACCAGATACTCCCTTGAACAGGAGTGATTG
CGTCTTTACAACAACAAGTGGATTTCCAAGAAACCCAGCTGCGAAAGATCAATACGGAAAATGAGACGCT
GCAGAAGGAGCTCCGAGAGCGGAGGCAGCAGCTACAAGCCATGACCGACAAGTTCTCCAACCTCCGAGAA
GATAAGAAACACCAAGAGATGATGGGGCTCATTGAAAAGGACAACCAGCTCCTCCGACAGCAAGTGTCCG
AACTGGAGAGAAAGCTCACCAAGCGGGACTGTGTATCTCAGAGTTGGACACCAAGGTGAGCCAGCTGCA
GGAGCAGGTGAACTGGACCAGAACCACCTGCAGAGGTGGAAGCAGCTGCAGGAGGATTTGCAGAGCAAG
AAGGAGATGATTCAGCAGGCAGAGCAGCACACCCGCGTGGCCCTGGAGAGCTCCCAGTCCAGGCTCGAGA
GGTTAAGGAATAAGATCATCCAGGCCACCTTTAGCATCTCCGGGACCAAGTCCTTGGCCAACGAGATCTC
TGACAATGACATCCTGGAAGCCCTGCAGAGAATTATCTCAGAGAGAAGCGACTACTATAATCAGTGAAG
CAGAAAGGCGTCAAAGTGCCCCCCTGCAACAGTCAGAGGCCCTTCTGACCAGCAATCCAAGAAGGGGA
CCTCCAAG

ACGCGTACGCGGCCGCTCGAGCAGAACTCATCTCAGAAGAGGATCTGGCAGCAATGATATCCTGGATT
ACAAGGATGACGACGATAAGGTTTAA

Protein Sequence: >RC211330 protein sequence
Red=Cloning site Green=Tags(s)

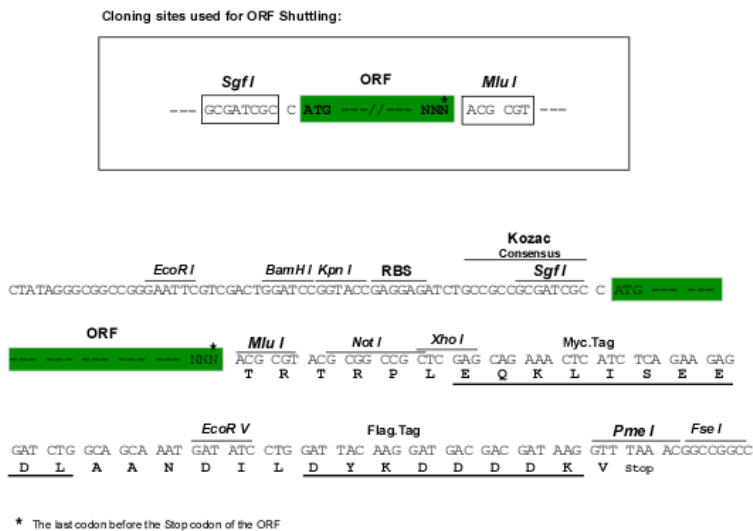
```
MFEAIFPSTPQARLKRDPREKPLSSFRSTFRQSSSLGLCIPRLMLPKEASPSERHSSMSSSMARALVLL
QSMASRDARCPWKPHQKPRTLKSVQTI SRYRKTSEPKDAASLTGFMSKMELRRVFPHPDCPQFSTR
ATSMSHCGSPTEADLSGEIDNSSETWRGTQDLFLARRGSDTNVDGYLLPFKSKICEFDYLRKRRKSQTLS
PVTSSSVASQSLRKRMPWYLSVIHEKDHCLSELEIQVQKKDEEILLLQEEREALKTQLKCLLKGGQET
SMSPGRREQLSDASLKLGRLLSLLKAFSRHEEELQHWQMQEESAAPERGKPD LGGEEDEGLEGE PDGV
EDMGAWGGV SQMGVHEEGSEEEEEEGDRDEDSEERELPEEEEEIPRRRASSLAESFEEELLAQLEEYEQ
VILDFQFNLEATRTRYSLATGVIASLQQVDFQETQLRKINTENETLQKELRERRQQLQAMTKFSNLRE
DKKHQEMMGLIEKDNQLLRQVSELERLTKRDCVISELDTKVSQLEQVELDQNHQLQRWKQLQEDLQSK
KEMIQQAEQHTRVALESSQSRLERLRNKIIQATFSISGTKSLANEISDNDILEALQRIISERSDYNNQLK
QKGVKVPPLQQSEAF LTKSKKGTSK
```

TRTRPLEQKLISEEDLAANDILDYKDDDDKV

Chromatograms: https://cdn.origene.com/chromatograms/mk6370_b10.zip

Restriction Sites: SgfI-MluI

Cloning Scheme:



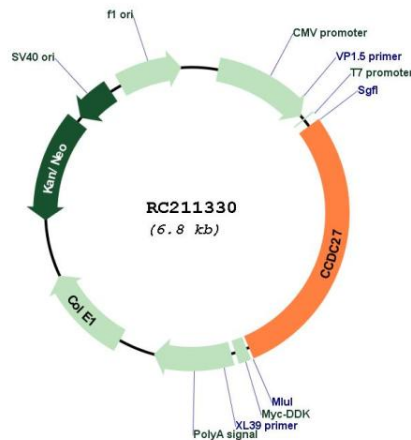
ACCN: NM_152492

ORF Size: 1968 bp

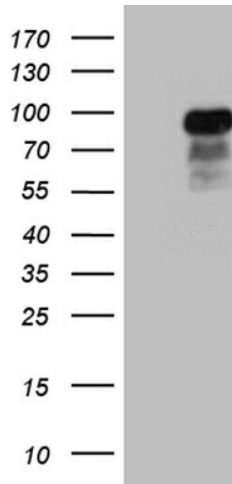
OTI Disclaimer: The molecular sequence of this clone aligns with the gene accession number as a point of reference only. However, individual transcript sequences of the same gene can differ through naturally occurring variations (e.g. polymorphisms), each with its own valid existence. This clone is substantially in agreement with the reference, but a complete review of all prevailing variants is recommended prior to use. [More info](#)

OTI Annotation: This clone was engineered to express the complete ORF with an expression tag. Expression varies depending on the nature of the gene.

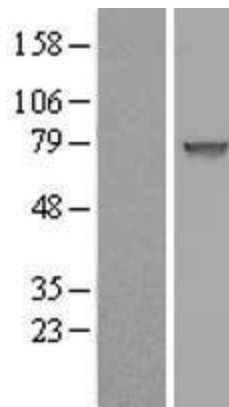
Components:	The ORF clone is ion-exchange column purified and shipped in a 2D barcoded Matrix tube containing 10ug of transfection-ready, dried plasmid DNA (reconstitute with 100 ul of water).
Reconstitution Method:	<ol style="list-style-type: none"> 1. Centrifuge at 5,000xg for 5min. 2. Carefully open the tube and add 100ul of sterile water to dissolve the DNA. 3. Close the tube and incubate for 10 minutes at room temperature. 4. Briefly vortex the tube and then do a quick spin (less than 5000xg) to concentrate the liquid at the bottom. 5. Store the suspended plasmid at -20°C. The DNA is stable for at least one year from date of shipping when stored at -20°C.
RefSeq:	<u>NM_152492.3</u>
RefSeq Size:	2174 bp
RefSeq ORF:	1971 bp
Locus ID:	148870
UniProt ID:	<u>Q2M243</u>
Cytogenetics:	1p36.32
MW:	75.4 kDa

Product images:


Circular map for RC211330



HEK293T cells were transfected with the pCMV6-ENTRY control (Cat# [PS100001], Left lane) or pCMV6-ENTRY CCDC27 (Cat# RC211330, Right lane) cDNA for 48 hrs and lysed. Equivalent amounts of cell lysates (5 ug per lane) were separated by SDS-PAGE and immunoblotted with anti-CCDC27 (Cat# [TA811190])(1:2000). Positive lysates [LY407499] (100ug) and [LC407499] (20ug) can be purchased separately from OriGene.



Western blot validation of overexpression lysate (Cat# [LY407499]) using anti-DDK antibody (Cat# [TA50011-100]). Left: Cell lysates from untransfected HEK293T cells; Right: Cell lysates from HEK293T cells transfected with RC211330 using transfection reagent MegaTran 2.0 (Cat# [TT210002]).