

Product datasheet for RC211328L1

Rhodopsin (RHO) (NM_000539) Human Tagged Lenti ORF Clone

Product data:

Product Type:	Expression Plasmids
Product Name:	Rhodopsin (RHO) (NM_000539) Human Tagged Lenti ORF Clone
Tag:	Myc-DDK
Symbol:	Rhodopsin
Synonyms:	CSNBAD1; OPN2; RP4
Mammalian Cell Selection:	None
Vector:	pLenti-C-Myc-DDK (PS100064)
E. coli Selection:	Chloramphenicol (34 ug/mL)
ORF Nucleotide Sequence:	The ORF insert of this clone is exactly the same as(RC211328).
Restriction Sites:	SgfI-MluI
Cloning Scheme:	

Cloning sites used for ORF Shuttling:



* The last codon before the Stop codon of the ORF.

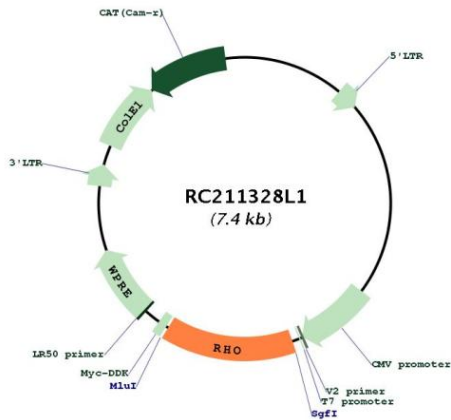
ACCN:	NM_000539
ORF Size:	1044 bp



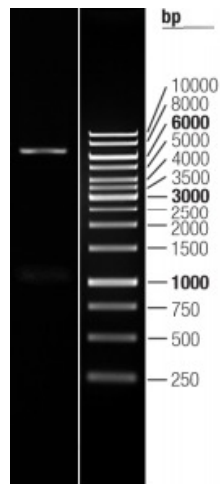
[View online »](#)

OTI Disclaimer:	The molecular sequence of this clone aligns with the gene accession number as a point of reference only. However, individual transcript sequences of the same gene can differ through naturally occurring variations (e.g. polymorphisms), each with its own valid existence. This clone is substantially in agreement with the reference, but a complete review of all prevailing variants is recommended prior to use. More info
OTI Annotation:	This clone was engineered to express the complete ORF with an expression tag. Expression varies depending on the nature of the gene.
Components:	The ORF clone is ion-exchange column purified and shipped in a 2D barcoded Matrix tube containing 10ug of transfection-ready, dried plasmid DNA (reconstitute with 100 ul of water).
Reconstitution Method:	<ol style="list-style-type: none">1. Centrifuge at 5,000xg for 5min.2. Carefully open the tube and add 100ul of sterile water to dissolve the DNA.3. Close the tube and incubate for 10 minutes at room temperature.4. Briefly vortex the tube and then do a quick spin (less than 5000xg) to concentrate the liquid at the bottom.5. Store the suspended plasmid at -20°C. The DNA is stable for at least one year from date of shipping when stored at -20°C.
RefSeq:	NM_000539.2
RefSeq Size:	2767 bp
RefSeq ORF:	1047 bp
Locus ID:	6010
UniProt ID:	P08100
Cytogenetics:	3q22.1
Protein Families:	Druggable Genome, Transmembrane
MW:	38.7 kDa
Gene Summary:	The protein encoded by this gene is found in rod cells in the back of the eye and is essential for vision in low-light conditions. The encoded protein binds to 11-cis retinal and is activated when light hits the retinal molecule. Defects in this gene are a cause of congenital stationary night blindness. [provided by RefSeq, Aug 2017]

Product images:



Circular map for RC211328L1



Double digestion of RC211328L1 using SgfI-MluI