

Product datasheet for **RC211311**

CCS (NM_005125) Human Tagged ORF Clone

Product data:

Product Type:	Expression Plasmids
Product Name:	CCS (NM_005125) Human Tagged ORF Clone
Tag:	Myc-DDK
Symbol:	CCS
Mammalian Cell Selection:	Neomycin
Vector:	pCMV6-Entry (PS100001)
E. coli Selection:	Kanamycin (25 ug/mL)
ORF Nucleotide Sequence:	>RC211311 representing NM_005125 Red=Cloning site Blue=ORF Green=Tags(s)

TTTTGTAATACGACTCACTATAGGGCGGCCGGAATTCGTCGACTGGATCCGGTACCGAGGAGATCTGCC
GCC**CGATCGCC**

ATGGCTTCGGATTCGGGAACCAGGGGACCCTCTGCACGTTGGAGTTCGCGGTGCAGATGACCTGTCAGA
GCTGTGTGGACGCGGTGCGCAAATCCCTGCAAGGGGTGGCAGGTGTCCAGGATGTGGAGGTGCACTTGA
GGACCAGATGGTCTTGGTACACACCACTCTACCCAGCCAGGAGGTGCAGGCTCTCCTGGAAGGCACGGGG
CGGCAGGCGGTACTCAAGGGCATGGGCAGCGGCCAGTTGCAGAACTCTGGGGCAGCAGTGGCCATCCTGG
GGGGCCTGGCACCGTGCAGGGGTGGTGCCTTCCTACAGCTGACCCCTGAGCGCTGCCATCGAGGG
AACTATTGACGGCCTGGAGCCTGGGCTGCATGGACTCCACGTCCATCAGTACGGGGACCTTACAAACAAC
TGCAACAGCTGTGGGAATCACTTTAACCCTGATGGAGCATCTCATGGGGCCCCAGGACTCTGACCGGC
ACCGCGGAGACCTGGGAATGTCCGTGCTGATGCTGACGGCCGCGCCATCTTCAGAATGGAGGATGAGCA
GCTGAAGGTGTGGGATGTGATTGGCCGAGCCTGATTATTGATGAGGGAGAAGATGACCTGGGCCGGGGA
GGCCATCCCTTATCCAAGATCACAGGAACTCCGGGGAGAGGTTGGCCTGTGGCATATTGCACGCTCCG
CTGGCCTTTCCAGAACCCCAAGCAGATCTGCTTTGCGATGGCCTCACCATCTGGGAGGAGCGAGGCCG
GCCATCGCTGGCAAGGGCCGAAAGGAGTCAGCGCAGCCCCCTGCCACCTT

ACGCGTACGCGGCCGCTCGAGCAGAAACTCATCTCAGAAGAGGATCTGGCAGCAAATGATATCCTGGATT
ACAAGGATGACGACGATAAGGTTTAA



[View online »](#)

Protein Sequence: >RC211311 representing NM_005125
Red=Cloning site Green=Tags(s)

MASDSGNQGTLCLEFAVQMTCQSCVDAVRKSLQGVAGVQDVEVHLEDQMVLVHTTLPSQEVQALLEGTG
 RQAVLKMGMSGQLQNLGAAVAAILGGPGTVQGVVRFQLTPERCLIEGTIDGLEPLHGLHVVHQYGDLTNN
 CNSCGNHFNPDGASHGGPQSDRHRGDLGNVRADADGRAIFRMEDEQLKVVWDVIGRSLIIDEGEDDLGRG
 GHPLSKITGNSGERLACGI IARSAGLFQNPQKICSDGLTIWEERGRPIAGKGRKESAPPAHL

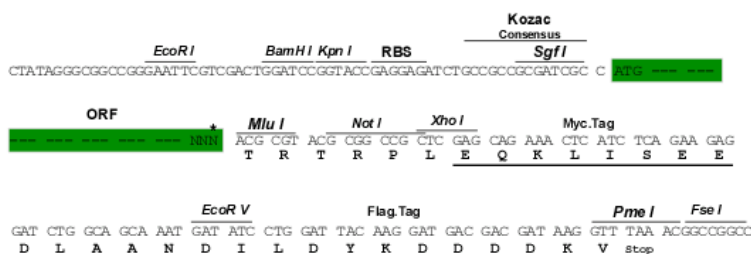
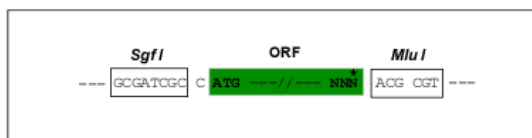
TRTRPLEQKLISEEDLAANDILDYKDDDDKV

Chromatograms: https://cdn.origene.com/chromatograms/ja1506_e01.zip

Restriction Sites: SgfI-MluI

Cloning Scheme:

Cloning sites used for ORF Shutting:



* The last codon before the Stop codon of the ORF

ACCN: NM_005125

ORF Size: 822 bp

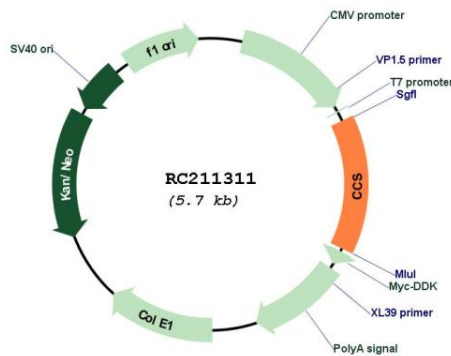
OTI Disclaimer: Due to the inherent nature of this plasmid, standard methods to replicate additional amounts of DNA in E. coli are highly likely to result in mutations and/or rearrangements. Therefore, OriGene does not guarantee the capability to replicate this plasmid DNA. Additional amounts of DNA can be purchased from OriGene with batch-specific, full-sequence verification at a reduced cost. Please contact our customer care team at custsupport@origene.com or by calling 301.340.3188 option 3 for pricing and delivery.

The molecular sequence of this clone aligns with the gene accession number as a point of reference only. However, individual transcript sequences of the same gene can differ through naturally occurring variations (e.g. polymorphisms), each with its own valid existence. This clone is substantially in agreement with the reference, but a complete review of all prevailing variants is recommended prior to use. [More info](#)

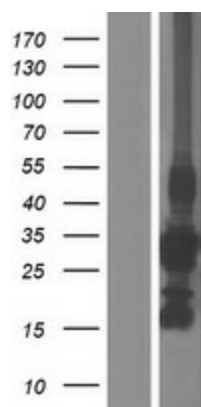
OTI Annotation: This clone was engineered to express the complete ORF with an expression tag. Expression varies depending on the nature of the gene.

Components:	The ORF clone is ion-exchange column purified and shipped in a 2D barcoded Matrix tube containing 10ug of transfection-ready, dried plasmid DNA (reconstitute with 100 ul of water).
Reconstitution Method:	<ol style="list-style-type: none"> 1. Centrifuge at 5,000xg for 5min. 2. Carefully open the tube and add 100ul of sterile water to dissolve the DNA. 3. Close the tube and incubate for 10 minutes at room temperature. 4. Briefly vortex the tube and then do a quick spin (less than 5000xg) to concentrate the liquid at the bottom. 5. Store the suspended plasmid at -20°C. The DNA is stable for at least one year from date of shipping when stored at -20°C.
RefSeq:	<u>NM_005125.2</u>
RefSeq Size:	1068 bp
RefSeq ORF:	825 bp
Locus ID:	9973
UniProt ID:	<u>O14618</u>
Cytogenetics:	11q13.2
Domains:	sodcu, HMA
Protein Families:	Druggable Genome
Protein Pathways:	Amyotrophic lateral sclerosis (ALS)
MW:	28.9 kDa
Gene Summary:	Copper chaperone for superoxide dismutase specifically delivers Cu to copper/zinc superoxide dismutase and may activate copper/zinc superoxide dismutase through direct insertion of the Cu cofactor. [provided by RefSeq, Jul 2008]

Product images:



Circular map for RC211311



Western blot validation of overexpression lysate (Cat# [LY417482]) using anti-DDK antibody (Cat# [TA50011-100]). Left: Cell lysates from untransfected HEK293T cells; Right: Cell lysates from HEK293T cells transfected with RC211311 using transfection reagent MegaTran 2.0 (Cat# [TT210002]).