

Product datasheet for RC211307

Pumilio 2 (PUM2) (NM_015317) Human Tagged ORF Clone

Product data:

Product Type:	Expression Plasmids
Product Name:	Pumilio 2 (PUM2) (NM_015317) Human Tagged ORF Clone
Tag:	Myc-DDK
Symbol:	Pumilio 2
Synonyms:	PUMH2; PUML2
Mammalian Cell Selection:	Neomycin
Vector:	pCMV6-Entry (PS100001)
E. coli Selection:	Kanamycin (25 ug/mL)
ORF Nucleotide Sequence:	>RC211307 representing NM_015317 Red=Cloning site Blue=ORF Green=Tags(s)

TTTTGTAATACGACTCACTATAGGGCGGCCGGAATTCGTCGACTGGATCCGGTACCGAGGAGATCTGCC
GCC**CGATCGCC**

ATGAATCATGATTTTCAAGCTCTTGCAATTAGAATCTCGGGGAATGGGAGAGCTTTTGCCTACCAAAAAGT
TTTGGAACTGATGATCAACAAAAGATGGACAAAAGGCATATTTCTGGGGATGATGAATGGAGAGA
GACTGCATGGGGAGCTTCTCACCATTCAATGTCCCAGCCTATTATGGTACAGAGAAGATCTGGACAGGGT
TTTCATGGAAACAGTGAAGTAAATGCAACTGTCTCCGCGATCAGAAAAGTGGAGGCCTTGGTGTGAGCA
TGGTAGAATATGTATTAAGTTCTTCTCCTGCTGATAAATTGGATTCTCGATTTAGGAAGGGAAATTTTGG
CACTAGAGATGCTGAAACAGATGGACCTGAGAAAAGGAGATCAAAAAGGCAAGGCTTCTCCATTTGAGGAG
GACCAAAACAGAGATCTTAAACAAGGAGATGATGATGATTCTAAAATAAATGGCAGAGGTTTGCCTAAATG
GAATGGATGCCGATTGCAAGATTTTAAATCGTACTCCTGGAAGTCGTCAAGCCTCTCCAAGTGAAGTAGT
TGAGCGCTTGGGCCCAATACTAATCCCTCAGAAGGACTGGGGCCTTCTCCTAATCTACAGCTAATAAA
CCAATTGTTGAAGATTTTCAAATCCTGAAACTCAGAATCTGGATGCCATGGAACAAGTTGGTCTGGAAT
CCTTACAGTTTGACTATCCTGGTAATCAGGTACCAATGGACTCTCAGGAGCTACTGTAGGCCTTTTGA
CTACAATCCCAGCAGCAGCTCTTTCAGAGGACTAATGCACTAACAGTTCAACAGTTAACTGCAGCTCAA
CAGCAGCAATATGCATTAGCAGCAGCTCAGCAGCCACATATAGCTGGTGTATTTCAGCAGGCCTTGCTC
CAGCTGCATTTGTGCCAAATCCATACATTATTAGTGCTCCTCCAGGGACCGATCCGTATACTGCAGC
AGGATTGGCTGCAGCAGCTACATTAGCAGGTCCAGCAGTGGTTCCACCTCAGTATTACGGCGTTCATGG
GGGGTGTATCCAGCCAATTATTTAGCAGCAAGCTGCAGCTGCGGCAAATAACACAGCCAGTCAGCAAG
CAGCATACAAGCTCAGCCTGGACAGCAACAGGTTCTCCGTGCTGGAGCAGGTCAGCGTCTCTTACTCC
CAATCAGGGTCAGCAAGGGCAGCAAGCAGAATCACTTGCAGCAGCTGCAGCAGCAATCCAACATTGGCT
TTTGGTCAGGGTCTTGTACTGGCATGCCAGGCTATCAAGTACTAGCTCCAAGTCCCTATTATGATCAGA
CTGGTGCCTTAGTGGTTGGCCCTGGAGCAAGGACTGGCCTTGGAGCTCCAGTTCGGTTAATGGCTCCAAC
ACCTGTTTAAATTAGTTCAGCAGCAGCACAAGCTGCAGCAGCAGCAGCAGCTGGAGGAAGTCAAGTAGC



[View online >](#)

```
CTTACAGGCAGCACAAATGGTCTGTTTCGGCCAATTGGCACTCAGCCACCACAGCAGCAGCAACAGCAGC
CAAGCTAATCTGCAATCTAATTCATTTTATGGAAGCAGTTCTTTGACTAATAGCTCCCAGAGTAGTTC
TTTATTTTCTCATGGACCTGGTCAACCTGGAAGTACATCTCTGGCTTTGGAAGTGGTAACCTTTGGGT
GCTGCTATAGGCTCAGCCTCAGTGGATTTGGTTCATCAGTTGGCAGTTCTGCAAGTAGTAGTCCACAA
GGAGAGAGTCTCTATCTACTAGCTCTGACTGTACAAAAGATCTAGTAGCAGCCTAGCACCCATAGGGCA
ACCATTTTACAATAGTCTGGGATTTTCTCCTCTCCAAGTCCAATAGGCATGCCTCTGCCAACCCAACT
CCAGGACATTCACCTACGCCACCGCCATCACTTTCATCACATGGATCCTCATCCAGTTTGCATTTAGGAG
GACTGACAAATGGTAGTGGTCGATATATCTCTGCAGCACCTGGAGCAGAAGCAAAATATCGAAGTGCTTC
AAGCACTTCCAGTCTATTTAGCTCCAGCAGCCAGCTCTTCTCCTTCCCGGCTTCGGTATAATAGGTCT
GATATTATGCCTTCTGGCCGAGTAGATTATTGGAAGATTTAGAAAACAACCGCTTCCAAACCTTCAGC
TTAGAGACTTGATTGGACATATAGTTGAGTTTTCTCAAGACCAGCATGGTTCTAGATTACACAGCAAAA
ACTAGAGAGAGCTACTCCAGCTGAGCGACAGATGGTATTTAATGAAATCTGCAAGCAGCCTATCAATTA
ATGACTGATGTTTTGGCAACTATGTTATACAGAAGTTTTTGGAGTTGGGAGTCTGGATCAAAAATTAG
CCCTGGCTACTCGTATTCGTGGTCATGTTCTACCCTTAGCCTGCAGATGTATGGCTGCCGCTTATTCA
GAAAGCATTAGAATCTATTTCTTCTGACCAGCAGAGTAAATGGTAAAGGAGCTGGATGGTCATGTGCTC
AAATGTGTGAAAGATCAGAAATGGAACCATGTTGTACAAAATGTATCGAATGTGTTAGCCACAGTCAC
TACAGTTCATCATTGATGCTTTCAGGGACAAGTATTTGTGCTTCAACTCATCCTTATGGCTGCAGAGT
AATTACAGCGCATCCTAGAGCATTGCACTGCAGAACAGACCTTACCTATCTAGAGAAGCTCCACCAACAT
ACAGAGCAGTTGGTACAGGATCAGTATGGCAATATGTTATTCAGCATGTACTGGAACACGGTCGACCTG
AAGACAAGAGCAAAATGTTTCCGAAATCAGGGGAAAGTTTTAGCCCTGAGTCAACACAAATTTGCCAG
CAATGTAGTAGAAAAGTGTACTCATGCCTCCCGTCTGAGAGAGCTTACTGATTGACGAGGTTTGC
TGCCAGAATGATGGTCTCACAGTGCCTTATACACCATGATGAAGGACCAGTATGCCAATTACGTGGTTC
AAAAGATGATTGATATGGCTGAACCTGCTCAGAGAAAAGATAATCATGCACAAGATTGACCTCACATTAC
TACTTTGCGCAAATACACATACGGGAAGCATATACTGGCCAAGTTGGAAGTATTATTTGAAAGAATAGC
CCGGACCTAGGACCTATTGGAGGACCACCAATGGAATGCTG
```

ACGCGTACGCGGCCGCTCGAGCAGAACTCATCTCAGAAGAGGATCTGGCAGCAATGATATCCTGGATT
ACAAGGATGACGACGATAAGGTTTAA

Protein Sequence:

>RC211307 representing NM_015317
Red=Cloning site Green=Tags(s)

```
MNHDFQALALESRGMGELLPTKKFWEPDDSTKDGQKGFIFLGDDEWRETAWGASHSMSQPIMVQRRSQG
FHGNSEVNAILSPRSESGGLGVSMVEYVLS SSPADKLD SRFKGNFGRDAETDGPKEGDQK GKASPFE
DQNRDLKQGD DSKINGRGLPNGMDADCKDFNRTPGSRQASPT E VVERLGPNTNPSEGLGPLPNPTANK
PLVEEF S NPETQNL DAMEQVGL E SLQFDY PGNQVPM DSSGATVGLFDYNSQQQL FQRTNALTVQQL TAAQ
QQQYALAAAQQPHIAGVF SAGLAPA AFV PNPYII SAAPP GTPYTAAGLAAAATLAGPAV VPPQYYGV PW
GVYPANLFQQQAAAAANNTASQQAASQAQPGQQVLRAGAGQRPLTPNQGGQQQAESLAAAAANPTLA
FGQGLATGMPGYQVLAPTAYYDQTGALVVGPGARTGLGAPVRLMAPTPVLISSAAAQAAAAAAGGTASS
LTGSTNGLFRPIGTQPPQQQQQPSTNLQSN SFY GSSSLTNSSQSSSLF SHGPGQPGSTSLGFGSGNSLG
AAIGSALSGFGSSVSGSSASSSATRRESLSTSSDLYKRSSSLAPIGQPFYNSLGFSSSPSIGMPLPSQT
PGHSLTPPPSLSHGSSSLHLGGLTNGSGRYISAAPGAEAKYRSASSTSLFSSSSQLFPPSRLRYNRS
DIMP SGRSRLLED FRNRRFNLQLRDLIGHIVEFSQDQHGSRFIQKLERATPAERQMV FNEILQAA YQL
MTDVF GNYVIQKFF EFGSLDQKLALATRIRGHVLPALQMYGCRVIQKAL ESISSDQQSEMVKELDGHVL
KCVKDQNGNHVQKCI ECVQPSLQFIIDAFKGVFVLS THPYGCRVIQRILEHCTAEQTLPIEELHQH
TEQLVQDQYGNVVIQHVLEHGRPEDKSKI VSEIRGKVLALS QHKFASNVEKCVTHASRAERALLIDEVC
CQNDGPHSALYTMK DQYANYV VQK MIDMAEPAQRKIIMHKIRPHITTLRKYTYGKHILAKLEKY LKNS
PDLGPIGGPPNGML
```

TRTRPLEQKLISEEDLAANDILDYKDDDDKV

Chromatograms:

https://cdn.origene.com/chromatograms/mg3193_f10.zip

Restriction Sites: SgfI-MluI

Cloning Scheme:



ACCN: NM_015317

ORF Size: 3192 bp

OTI Disclaimer: The molecular sequence of this clone aligns with the gene accession number as a point of reference only. However, individual transcript sequences of the same gene can differ through naturally occurring variations (e.g. polymorphisms), each with its own valid existence. This clone is substantially in agreement with the reference, but a complete review of all prevailing variants is recommended prior to use. [More info](#)

OTI Annotation: This clone was engineered to express the complete ORF with an expression tag. Expression varies depending on the nature of the gene.

Components: The ORF clone is ion-exchange column purified and shipped in a 2D barcoded Matrix tube containing 10ug of transfection-ready, dried plasmid DNA (reconstitute with 100 ul of water).

Reconstitution Method:

1. Centrifuge at 5,000xg for 5min.
2. Carefully open the tube and add 100ul of sterile water to dissolve the DNA.
3. Close the tube and incubate for 10 minutes at room temperature.
4. Briefly vortex the tube and then do a quick spin (less than 5000xg) to concentrate the liquid at the bottom.
5. Store the suspended plasmid at -20°C. The DNA is stable for at least one year from date of shipping when stored at -20°C.

RefSeq: [NM_015317.5](#)

RefSeq Size: 6111 bp

RefSeq ORF: 3195 bp

Locus ID: 23369

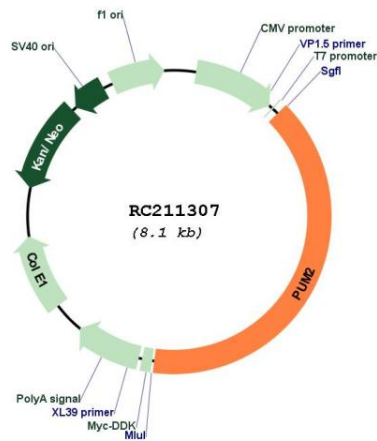
UniProt ID: [Q8TB72](#)

Cytogenetics: 2p24.1
Domains: PUF

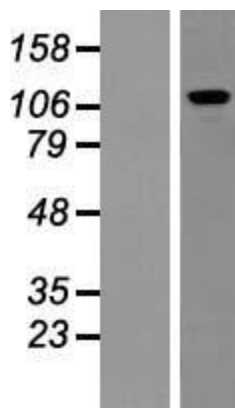
MW: 113.8 kDa

Gene Summary: This gene encodes a protein that belongs to a family of RNA-binding proteins. The encoded protein functions as a translational repressor during embryonic development and cell differentiation. This protein is also thought to be a positive regulator of cell proliferation in adipose-derived stem cells. Alternate splicing results in multiple transcript variants. [provided by RefSeq, Sep 2013]

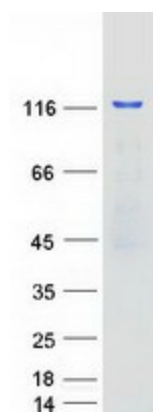
Product images:



Circular map for RC211307



Western blot validation of overexpression lysate (Cat# [LY414648]) using anti-DDK antibody (Cat# [TA50011-100]). Left: Cell lysates from untransfected HEK293T cells; Right: Cell lysates from HEK293T cells transfected with RC211307 using transfection reagent MegaTran 2.0 (Cat# [TT210002]).



Coomassie blue staining of purified PUM2 protein (Cat# [TP311307]). The protein was produced from HEK293T cells transfected with PUM2 cDNA clone (Cat# RC211307) using MegaTran 2.0 (Cat# [TT210002]).