

Product datasheet for **RC211298**

LI Cadherin (CDH17) (NM_004063) Human Tagged ORF Clone

Product data:

Product Type:	Expression Plasmids
Product Name:	LI Cadherin (CDH17) (NM_004063) Human Tagged ORF Clone
Tag:	Myc-DDK
Symbol:	LI Cadherin
Synonyms:	CDH16; HPT-1; HPT1
Mammalian Cell Selection:	Neomycin
Vector:	pCMV6-Entry (PS100001)
E. coli Selection:	Kanamycin (25 ug/mL)



[View online »](#)

**ORF Nucleotide
Sequence:**

>RC211298 representing NM_004063
 Red=Cloning site Blue=ORF Green=Tags(s)

TTTTGTAATACGACTCACTATAGGGCGGCCGGAATTCGTGCGACTGGATCCGGTACCGAGGAGATCTGCC
 GCC**CGGATCGCC**

ATGATACTTCAGGCCATCTTCACTCCCTGTGTCTTCTTATGCTTTATTTGGCAACTGGATATGGCCAAG
 AGGGGAAGTTTAGTGACCCTGAAACCCATGACATTTTCTATTTATGAAGGCCAAGAACCGAGTCAAAT
 TATATTCAGTTAAAGCCAATCCTCCTGCTGACTTTTGAACAACTGGGAGACAGACAACATATTT
 GTGATAGAACGGGAGGGACTTCTGTATTACAACAGAGCCTTGGACAGGAAAACAAGATCTACTCACAATC
 TCCAGGTTGCAGCCCTGGACGCTAATGGAATTATAGTGGAGGGTCCAGTCCCTATCACCATAAAAGTGAA
 GGACATCAACGACAATCGACCCACGTTTCTCCAGTCAAAGTACGAAGGCTCAGTAAGGCAGAACTCTCGC
 CCAGGAAAGCCCTTCTGTATGTCAATGCCACAGACCTGGATGATCCGGCCACTCCCAATGGCCAGCTTT
 ATTACCAGATTGCATCCAGTCTCCATGATCAACAATGTCATGACTTTTCAGATCAACAACAAAACGGG
 AGCCATCTCTTACCCGAGAGGGATCTCAGGAATTGAATCCTGCTAAGAATCCTTCTATAATCTGGTG
 ATCTCAGTGAAGGACATGGGAGGCCAGAGTGAGAATTCCTTCAGTGATACCACATCTGTGGATATCATAG
 TGACAGAGAATATTTGGAAGCACCAAAACCTGTGGAGATGGTGGAAAACCTCAACTGATCCTCACCCCAT
 CAAAATCACTCAGGTGCGGTGGAATGATCCCGTGCACAATATTCCTTAGTTGACAAAGAGAAGTGCCA
 AGATTCACATTTTCAATTGACCAGGAAGGAGATATTTACGTGACTCAGCCCTTGGACCGAGAAGAAAAGG
 ATGCATATGTTTTTATGCAGTTGCAAAGGATGAGTACGAAAACCACTTTCATATCCCGTGAAATTTCA
 TGATAAAGTTAAAGATATTAATGATAATCCACCTACATGTCGTCACCAGTAACCGTATTTGAGGTCCAG
 GAGAATGAACGACTGGGTAAACAGTATCGGGACCCTTACTGCACATGACAGGGATGAAGAAAATACTGCCA
 ACAGTTTTCTAAACTACAGGATTGTGGAGCAAACCTCCAAACTCCCATGGATGGACTCTTCTCAATCCA
 AACCTATGCTGGAATGTTACAGTTAGCTAAACAGTCCTTGAAGAAGCAAGATACTCCTCAGTACAACCTTA
 ACGATAGAGGTGCTGACAAAGATTTCAAGACCCTTTGTTTTGTGCAAATCAACGTTATTGATATCAATG
 ATCAGATCCCATCTTTGAAAAATCAGATTATGGAAACCTGACTCTTGCTGAAGACACAAACATTGGGTC
 CACCATCTTAACCATCCAGGCCACTGATGCTGATGAGCCATTTACTGGGAGTTCTAAAATCTGTATCAT
 ATCATAAAGGGAGACAGTGAAGGACGCCTGGGGTTGACACAGATCCCCATACCAACACCCGGATATGTCA
 TAATTAAGGCCTCTTGATTTTGAACAGCAGCTGTTTCCAACATTGTGTTCAAAGCAGAAAATCTGGA
 GCCTCTAGTGTGGTGTGAAGTACAATGCAAGTCTTTTCCAAAGTTCACGCTTATTGTGACAGATGTG
 AATGAAGCACCTCAATTTCCCAACACGTATTCGAAGCGAAAGTCAGTGAGGATGTAGCTATAGGCACTA
 AAGTGGGCAATGTGACTGCCAAGGATCCAGAAGTCTGGACATAAGCTATTCAGTGAAGGGAGACACAAG
 AGGTTGGCTTAAAATTGACCACGTGACTGGTGAGATCTTTAGTGTGGCTCCATTGGACAGAGAAGCCGGA
 AGTCCATATCGGGTACAAGTGGTGGCCACAGAAGTAGGGGGTCTTCTTAAGCTCTGTGTCAGAGTTCC
 ACCTGATCCTTATGGATGTGAATGACAACCTCCAGGCTAGCCAAGGACTACACGGGCTTGTCTTCTG
 CCATCCCTCAGTGCACCTGGAAGTCTCATTTTCGAGGCTACTGATGATGATCAGCACTTATTTCCGGGT
 CCCATTTTACATTTTCCCTCGGCAGTGAAGCTTACAAAACGACTGGGAAGTTTCCAAAATCAATGGTA
 CTCATGCCGACTGTCTACCAGGCACACAGACTTTGAGGAGAGGGCGTATGTCGCTTGTATCCGCATCAA
 TGATGGGGTTCGGCCACCCTTGAAGGCATTGTTCTTTACCAGTTACATTCTGCAGTTGTGTGGAAGGA
 AGTTGTTCCGGCCAGCAGGTACCAGACTGGGATACCCACTGTGGCATGGCAGTTGGTATACTGCTGA
 CCACCCTTCTGGTATTGGTATAATTTTAGCAGTTGTGTTTATCCGCATAAAGAAGGATAAAGGCAAAGA
 TAATGTTGAAAGTCTCAAGCATCTGAAGTCAAACCTCTGAGAAGC

ACGCGTACGCGGCCGCTCGAGCAGAACTCATCTCAGAAGAGGATCTGGCAGCAAATGATATCCTGGATT
 ACAAGGATGACGACGATAAGGTTTAA

Protein Sequence: >RC211298 representing NM_004063
Red=Cloning site Green=Tags(s)

MILQAHLHSLCLLMLYLATGYGQEGKFSGPLKPMTFISIYEGQEPSQIIFQFKANPPAVTFELTGETDNIF
VIEREGLLYNRALDRETRSTHNLQVAALDANGIIVEGPVITIKVKDINDNRPTFLQSKYEGSVRQNSR
PGKPFLYVNATDLDDPATPNGQLYYQIIVQLPMINNVMYFQINNKTGAI SLTREGSQELNPAKNPSYNLV
ISVKDMGGQSENSFSDTTSVDIIVTENIWKAPKPVEMVENSTDPHPKITQVRWNDPGAQYSLVDKEKLP
RFPFSIDQEGDIYVTQPLDREEKDAYVFYAVAKDEYKPLSYPLEIHVKVKDINDNPPTCPSPVTVFEVQ
ENERLGN SIGTLTAHDRDEENTANSFLNYRIVEQTPKLPMDGLFLIQTYAGMLQLAKQSLKKQDTPQYNL
TIEVSDKDFKTLCFVQINVIDINDQIPIFEKSDYGNLTLAEDTNI GSTILTIQATDADEPFTGSSKILYH
I IKGDSEGR LGVDTDPHTNTGYVI IKKPLDFETA AVSNI VFKAENPEPLVFGVKYNASSFAKFTLIVTDV
NEAPQFSQHVFQAKVSEDVAIGTKVGNVTAKDPEGLDISYSLRGDTRGWLKIDHVTGEIFSVAPLDREAG
SPYRVQV VATEVGGSSLSVSEFHLILMDVNDNPPRLAKDYTG LFFCHPLSAPGSLIFEATDDDQHLFRG
PHFTFSLGSGSLQNDWEVSKINGTHARLSTRHTDFEERAYVVLIRINDGGRPPLEGIVSLPVTFCSCVEG
SCFRPAGHQGTGIPTVGMVAVGILLTLLVIGIILAVV FIRIKKDKGKDNVESAQASEVKPLRS

TRTRPLEQKLISEEDLAANDILDYKDDDDKV

Chromatograms: https://cdn.origene.com/chromatograms/mg2975_e01.zip

Restriction Sites: Sgfl-Mlul

Cloning Scheme:


ACCN: NM_004063

ORF Size: 2496 bp

OTI Disclaimer: The molecular sequence of this clone aligns with the gene accession number as a point of reference only. However, individual transcript sequences of the same gene can differ through naturally occurring variations (e.g. polymorphisms), each with its own valid existence. This clone is substantially in agreement with the reference, but a complete review of all prevailing variants is recommended prior to use. [More info](#)

OTI Annotation: This clone was engineered to express the complete ORF with an expression tag. Expression varies depending on the nature of the gene.

Components: The ORF clone is ion-exchange column purified and shipped in a 2D barcoded Matrix tube containing 10ug of transfection-ready, dried plasmid DNA (reconstitute with 100 ul of water).

Reconstitution Method:

1. Centrifuge at 5,000xg for 5min.
2. Carefully open the tube and add 100ul of sterile water to dissolve the DNA.
3. Close the tube and incubate for 10 minutes at room temperature.
4. Briefly vortex the tube and then do a quick spin (less than 5000xg) to concentrate the liquid at the bottom.
5. Store the suspended plasmid at -20°C. The DNA is stable for at least one year from date of shipping when stored at -20°C.

RefSeq: [NM_004063.4](#)

RefSeq Size: 3697 bp

RefSeq ORF: 2499 bp

Locus ID: 1015

UniProt ID: [Q12864](#)

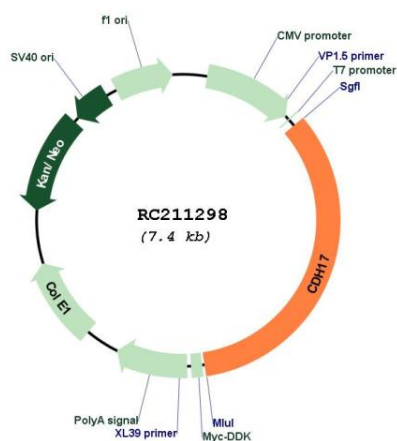
Cytogenetics: 8q22.1

Protein Families: Transmembrane

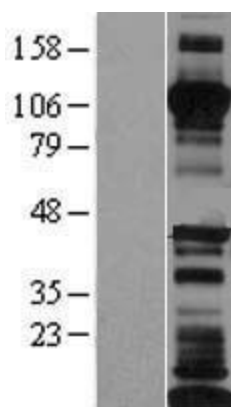
MW: 92.15 kDa

Gene Summary: This gene is a member of the cadherin superfamily, genes encoding calcium-dependent, membrane-associated glycoproteins. The encoded protein is cadherin-like, consisting of an extracellular region, containing 7 cadherin domains, and a transmembrane region but lacking the conserved cytoplasmic domain. The protein is a component of the gastrointestinal tract and pancreatic ducts, acting as an intestinal proton-dependent peptide transporter in the first step in oral absorption of many medically important peptide-based drugs. The protein may also play a role in the morphological organization of liver and intestine. Alternative splicing results in multiple transcript variants. [provided by RefSeq, Jan 2009]

Product images:



Circular map for RC211298



Western blot validation of overexpression lysate (Cat# [LY428499]) using anti-DDK antibody (Cat# [TA50011-100]). Left: Cell lysates from untransfected HEK293T cells; Right: Cell lysates from HEK293T cells transfected with [RC226588] using transfection reagent MegaTran 2.0 (Cat# [TT210002]).