

Product datasheet for RC211296

GPR26 (NM_153442) Human Tagged ORF Clone

Product data:

Product Type:	Expression Plasmids
Product Name:	GPR26 (NM_153442) Human Tagged ORF Clone
Tag:	Myc-DDK
Symbol:	GPR26
Mammalian Cell Selection:	Neomycin
Vector:	pCMV6-Entry (PS100001)
E. coli Selection:	Kanamycin (25 ug/mL)
ORF Nucleotide Sequence:	>RC211296 ORF sequence Red=Cloning site Blue=ORF Green=Tags(s)

TTTTGTAATACGACTCACTATAGGGCGGCCGGGAATTCGTCGACTGGATCCGGTACCGAGGAGATCTGCC
GCC**CGATCGCC**

ATGAACTCGTGGGACGCGGGCTGGCGGGGCTACTGGTGGGCACGATGGGCGTCTCGCTGCTGTCCAACG
CGCTGGTGTCTGCTGCTGCACAGCGCGGACATCCGCCGCCAGGCGCCGGCGCTCTCACCCCTGAA
CCTCACGTGCGGGAACCTGCTGTGCACCGTGGTCAACATGCCGCTCACGCTGGCCGGCGTCTGGCGCAG
CGGCAGCCGGCGGGGACCGCCTGTGCCGCTGGCTGCCTTCTCGACACCTTCTGGCTGCCAACTCCA
TGCTCAGCATGGCCGCGCTCAGCATCGACCGTGGTGGCGTGGTCTTCCCGTGGCTACCCGGCCAA
GATGCGCCTCCGCGACGCGGCGCTCATGGTGGCCTACACGTGGCTGCACGCGCTCACCTTCCAGCGCC
GCGCTCGCCCTGTCTGGCTCGGCTTCCACCAGCTGTACGCTCGTGCACGCTGTGCAGCCGGCGCCGG
ACGAGCGCTGCGCTTCCGCTTCTCACTGGCGCTTCCACGCTCTCAGCTTCTGCTCTCTTCTGCTCGT
GCTCTGCTGCACGTACCTCAAGGTGCTCAAGGTGGCCGCTTCCATTGCAAGCGCATCGACGTGATCACC
ATGCAGACGCTCGTGTCTGCTGGTGGACCTGCACCCAGTGTGCGGGAACGCTGTCTGGAGGAGCAGAAGC
GGAGGCGACAGCGAGCCACCAAGAAGATCAGCACCTTCTAGGGACCTTCTTGTGTCTTCGCGCCCTA
TGTGATCACCAGGCTAGTGGAGCTTCTCCACGGTGGCCATCGGCTCCCACTGGGGGTGCTGTCCAAG
TGCTTGGCGTACAGCAAGGCCGATCCGACCCCTTGTGTACTCCTTACTGCGACACCAGTACCGCAAAA
GCTGCAAGGAGATTCTGAACAGGCTCCTGCACAGACGCTCCATCCACTCCTCTGGCTCACAGGCGACTC
TCACAGCCAGAATTCTGCCGGTGTCTGAG

ACGCGTACGCGGCCGCTCGAGCAGAACTCATCTCAGAAGAGGATCTGGCAGCAAATGATATCCTGGATT
ACAAGGATGACGACGATAAGGTTTAA



[View online »](#)

Protein Sequence: >RC211296 protein sequence
Red=Cloning site Green=Tags(s)

MNSWDAGLAGLLVGTMGVSLLSNALVLLCLLHSADIRRQAPALFTLNLTCGNLLCTVVNMPLTAGVVAQ
 RQPAGDRLCRLAAFLDTFLAANSMLMAALSIDRWVAVVFPLSYRAKMLRDAALMVAYTWLHALTFPAA
 ALALSWLGFHQLYASCTLCRRPDERLRFVFTGAFHALSFLLSFVVLCCCTYLKVLKVARFHCKRIDVIT
 MQTLVLLVLDLHPSVRECLLEEQRRRQRATKKISTFFIGTFLVCFAPYVITRLVELFSTVPIGSHWGLSK
 CLAYSKAASDPFVYSLLRHQYRKSCKEILNRLHRRSIHSSGLTGDSHSQNILPVSE

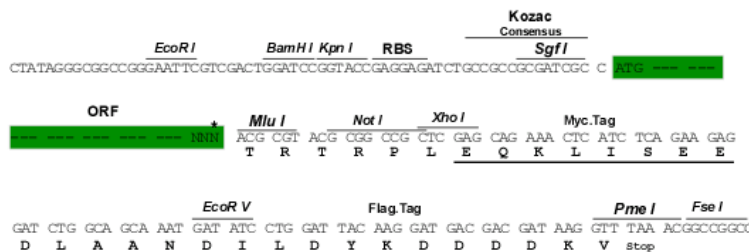
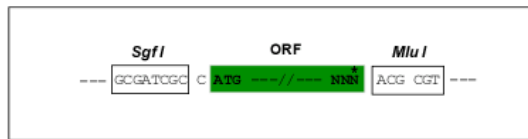
TRTRPLEQKLISEEDLAANDILDYKDDDDKV

Chromatograms: https://cdn.origene.com/chromatograms/mk6270_b02.zip

Restriction Sites: Sgfl-MluI

Cloning Scheme:

Cloning sites used for ORF Shuttling:



* The last codon before the Stop codon of the ORF

ACCN: NM_153442

ORF Size: 1011 bp

OTI Disclaimer: The molecular sequence of this clone aligns with the gene accession number as a point of reference only. However, individual transcript sequences of the same gene can differ through naturally occurring variations (e.g. polymorphisms), each with its own valid existence. This clone is substantially in agreement with the reference, but a complete review of all prevailing variants is recommended prior to use. [More info](#)

OTI Annotation: This clone was engineered to express the complete ORF with an expression tag. Expression varies depending on the nature of the gene.

Components: The ORF clone is ion-exchange column purified and shipped in a 2D barcoded Matrix tube containing 10ug of transfection-ready, dried plasmid DNA (reconstitute with 100 ul of water).

Reconstitution Method:

1. Centrifuge at 5,000xg for 5min.
2. Carefully open the tube and add 100ul of sterile water to dissolve the DNA.
3. Close the tube and incubate for 10 minutes at room temperature.
4. Briefly vortex the tube and then do a quick spin (less than 5000xg) to concentrate the liquid at the bottom.
5. Store the suspended plasmid at -20°C. The DNA is stable for at least one year from date of shipping when stored at -20°C.

RefSeq: [NM_153442.1](#), [NP_703143.1](#)

RefSeq Size: 10316 bp

RefSeq ORF: 1014 bp

Locus ID: 2849

UniProt ID: [Q8NDV2](#)

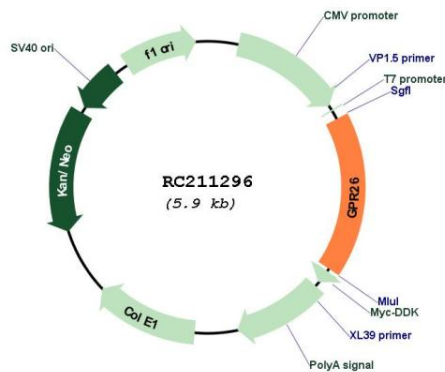
Cytogenetics: 10q26.13

Protein Families: Druggable Genome, GPCR, Transmembrane

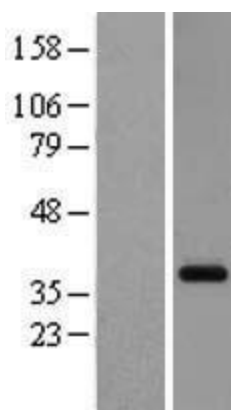
MW: 37.6 kDa

Gene Summary: This gene encodes a G protein-couple receptor protein. G-protein-coupled receptors are a large family of membrane proteins that are involved in cellular responses to environmental stimuli, neurotransmitters, and hormones. The encoded protein may play a role in neurodegenerative diseases. Epigenetic silencing of this gene has been observed in gliomas. [provided by RefSeq, Sep 2016]

Product images:



Circular map for RC211296



Western blot validation of overexpression lysate (Cat# [LY407094]) using anti-DDK antibody (Cat# [TA50011-100]). Left: Cell lysates from untransfected HEK293T cells; Right: Cell lysates from HEK293T cells transfected with RC211296 using transfection reagent MegaTran 2.0 (Cat# [TT210002]).