

Product datasheet for RC211288

MIXL1 (NM_031944) Human Tagged ORF Clone

Product data:

Product Type: Expression Plasmids
Product Name: MIXL1 (NM_031944) Human Tagged ORF Clone
Tag: Myc-DDK
Symbol: MIXL1
Synonyms: MILD1; MIX; MIXL
Mammalian Cell Selection: Neomycin
Vector: pCMV6-Entry (PS100001)
E. coli Selection: Kanamycin (25 ug/mL)
ORF Nucleotide Sequence: >RC211288 representing NM_031944
 Red=Cloning site Blue=ORF Green=Tags(s)

TTTTGTAATACGACTCACTATAGGGCGCCGGGAATTCGTCGACTGGATCCGGTACCGAGGAGATCTGCC
 GCC**CGATCGCC**

ATGGCCACAGCCGAGTCCCCTGCGCTCCAGTTTGCCGAGGGCGCCGCTTCCAGCGTACCGGGCCCCC
 ACGCCGGCGGGCGCTCCTGCCGCCCGGAGCCCTGCGGCAGCCCTGCTCCCTGCGCCGCCCGGGGCC
 CGGCCAGCGACCTTTGCGGGCTTCTCGGCCGGGACCCGGGCCGGCCCGCCGCCCGCCCGCCAGCCTG
 GGCTCGCCTGCGCCCCAAAGGCGCGGCCCGCCCGTCCGCGTCCGAGCGCCGAAGCGCACGTCTTCA
 GCGCCGAACAGCTGCAGCTGCTGGAGCTCGTCTCCGCCGACCCGGTACCCCGACATCCACTTGCGCGA
 GCGCCTGGCCGCGCTCACCTGCTCCCGAGTCCAGGATCCAGGTATGGTTCCAGAACAGGCGTGCCAAG
 TCTCGGCGTCAGAGTGGGAAATCCTTCCAACCTTTGGCTAGGCCGGAGATTATCCTCAACCACTGTGCTC
 CTGGAAGTGAACGAAATGTCTGAAGCCCCAGCTGCCTCTTGAGGTAGATGTGAAGTGCCTGCCCGAAC
 AAACGGGGTTGGAGGGGGCATCTCTGACTCTAGCTCCAAGGTCAGAATTTGAAACCTGTTCCCTCTC
 TCTGAAGACATTGGTTCAAAGCTGGACTCATGGGAGAACACATCTTTCTGCCTTTGGTAACTTT

ACGCGTACGCGGGCGCTCGAGCAGAAACTCATCTCAGAAGAGGATCTGGCAGCAAATGATATCCTGGATT
 ACAAGGATGACGACGATAAGGTTTAA



[View online »](#)

Protein Sequence: >RC211288 representing NM_031944
 Red=Cloning site Green=Tags(s)

MATAESRALQFAEGAAFPAYRAPHAGGALLPPPSAAAALLPAPPAGPGPATFAGFLGRDPGPAPPPASL
 GSPAPPKGAAPSASQRRKRTSFSAEQLQLELVFRRTYRYPDIHLRERLAALTLLPESRIQVWFQNRRAK
 SRRQSGKSFQPLARPEIILNHCAPGTETKCLKPQLPLEVDVNCLPEPNGVGGGISDSSSQGNFETCSPL
 SEDIGSKLDSWEEHIFSAFGNF

TRTRPLEQKLISEEDLAANDILDYKDDDDKV

Chromatograms: https://cdn.origene.com/chromatograms/ja1474_g11.zip

Restriction Sites: SgfI-MluI

Cloning Scheme:

Cloning sites used for ORF Shuttling:



* The last codon before the Stop codon of the ORF

ACCN: NM_031944

ORF Size: 696 bp

OTI Disclaimer: The molecular sequence of this clone aligns with the gene accession number as a point of reference only. However, individual transcript sequences of the same gene can differ through naturally occurring variations (e.g. polymorphisms), each with its own valid existence. This clone is substantially in agreement with the reference, but a complete review of all prevailing variants is recommended prior to use. [More info](#)

OTI Annotation: This clone was engineered to express the complete ORF with an expression tag. Expression varies depending on the nature of the gene.

Components: The ORF clone is ion-exchange column purified and shipped in a 2D barcoded Matrix tube containing 10ug of transfection-ready, dried plasmid DNA (reconstitute with 100 ul of water).

Reconstitution Method:

1. Centrifuge at 5,000xg for 5min.
2. Carefully open the tube and add 100ul of sterile water to dissolve the DNA.
3. Close the tube and incubate for 10 minutes at room temperature.
4. Briefly vortex the tube and then do a quick spin (less than 5000xg) to concentrate the liquid at the bottom.
5. Store the suspended plasmid at -20°C. The DNA is stable for at least one year from date of shipping when stored at -20°C.

RefSeq: [NM_031944.3](#)

RefSeq Size: 699 bp

RefSeq ORF: 699 bp

Locus ID: 83881

UniProt ID: [Q9H2W2](#)

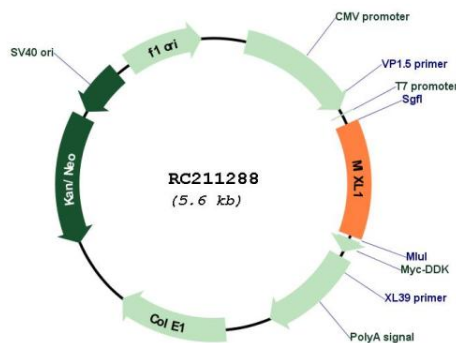
Cytogenetics: 1q42.12

Protein Families: ES Cell Differentiation/IPS

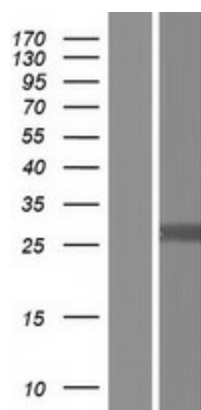
MW: 24.5 kDa

Gene Summary: Homeodomain proteins, such as MIXL1, are transcription factors that regulate cell fate during development (Hart et al., 2005 [PubMed 15982639]).[supplied by OMIM, Mar 2008]

Product images:



Circular map for RC211288



Western blot validation of overexpression lysate (Cat# [LY410427]) using anti-DDK antibody (Cat# [TA50011-100]). Left: Cell lysates from untransfected HEK293T cells; Right: Cell lysates from HEK293T cells transfected with RC211288 using transfection reagent MegaTran 2.0 (Cat# [TT210002]).