

## Product datasheet for **RC211285**

### **BAPX1 (NKX3-2) (NM\_001189) Human Tagged ORF Clone**

#### Product data:

Product Type:	Expression Plasmids
Product Name:	BAPX1 (NKX3-2) (NM_001189) Human Tagged ORF Clone
Tag:	Myc-DDK
Symbol:	NKX3-2
Synonyms:	BAPX1; NKX3.2; NKX3B; SMMD
Vector:	pCMV6-Entry (PS100001)
E. coli Selection:	Kanamycin (25 ug/mL)
Cell Selection:	Neomycin
ORF Nucleotide Sequence:	>RC211285 ORF sequence Red=Cloning site Blue=ORF Green=Tags(s)

TTTTGTAATACGACTCACTATAGGGCGGCCGGAATTCGTCGACTGGATCCGGTACCGAGGAGATCTGCC  
GCC**CGATCGCC**

ATGGCTGTGCGCGGCCAACACCTTGACGTCCTTCTCCATCCAGGCGATCCTCAACAAGAAGAGGAGC  
GCGGCGGGCTGGCCGCGCAGAGGGGCGCCCGGCGCCGGGGGCACAGCGGCATCGGTGGCCGGCTCC  
CGCTGTCTGCTGTTGGCGCTCTTTGGGAGAGGGACCGGGCGGTTGGGGGGCCGAGGACTCTCTG  
CTGGCGTCTCTGCCGGTACCAGAACAGCTGCGGGCGGACTGCGGAGAGCCCGAAGGCTGGGACTCGG  
ACTCCGCGCTCAGCGAGGAGAACGAGAGCAGGGCGGCTGCGCGGACGCGGGGGGCCAGCGGGGCCGG  
CCTTGGCGGGGATCCTTGAGCCTCGGCCAGCCGGTCTGTGAGCTGGCCGCTTCCAAAGACCTAGAGGAG  
GAAGCCGCGGGCCGAGCGACAGCGAGATGTCCGCCAGCGTTCAGGCGACCCGACGCCAAGGACCGAGG  
ACGACGGTGTGGCCCCAGAGGTGCACACGTGTCCGCGCTGTGCAGCGGGGCCGGCGGGGGCGGCGAG  
CGGGCCGCGAGCGTCCGCGAGGAGGAGGAGGAGCCGGCGGCCAAGCCACGCAAGAAGCGCTCGCGG  
GCCGCTTTCTCCACGCGCAGGTCTTCGAGCTGGAGCGCCGCTTAACCACAGCGCTACCTGTCCGGGC  
CCGAGCGCGCAGACCTGGCCGCGTGAAGCTCACCGAGAGCAGTGAATACTGGTCCAGAACC  
TCGCTACAAGACAAAGCGCCGCGAGATGGCAGCCGACCTGCTGGCCTCGGCGCCCGCCAAGAAGGTG  
GCCGTAAGGTGCTGGTGCAGCAGACAGAGACAATACTGCCCGCGAAGTGCTGCGGCCACCTCGC  
TTCTGCCACTGCAGCCCTCTACTATTACCCGTACTACTGCCTCCAGGCTGGGCGCTCTCCACCTGCGC  
AGCTGCCGAGGCACCCAG

**ACGCGT**ACGCGGCCGCTCGAGCAGAACTCATCTCAGAAGAGGATCTGGCAGCAATGATATCCTGGATT  
ACAAGGATGACGACGATAAGGTTTAA



[View online »](#)

**Protein Sequence:** >RC211285 protein sequence  
 Red=Cloning site Green=Tags(s)

MAVRGANTLTSFSIQAILNKKEERGGLAAPEGRPAPGGTAASVAAAPAVCCWRLFGERDAGALGGAEDSL  
 LASPAGTRTAAGRTAESPEGWSDSALSEENESRRRCADARGASGAGLAGGSLSLGQPVCELAASKDLEE  
 EAAGRSDSEMSASVSGDRSPRTEDDGVGPRGAHVSAALCSGAGGGGGSGPAGVAEEEEEPAAKPKRKRSR  
 AAFSHAQVFELERRFNHQRYLSGPERADLAASLKL TETQVKIWFQNRRYKTKRRQMAADLLASAPAAKKV  
 AVKVLVRDDQRQYLPGEVLRPPSLLPLQPSYYYPPYCLPGWALSTCAAAAAGTQ

TRTRPLEQKLISEEDLAANDILDYKDDDDKV

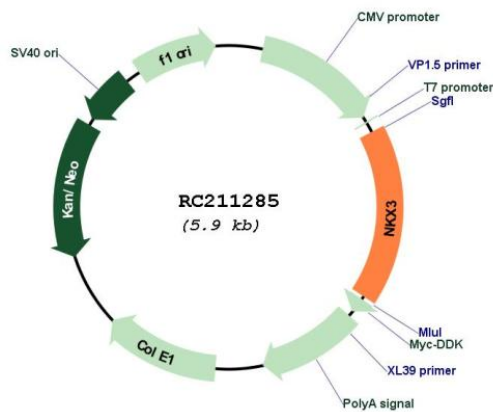
**Chromatograms:** [https://cdn.origene.com/chromatograms/mk6814\\_e06.zip](https://cdn.origene.com/chromatograms/mk6814_e06.zip)

**Restriction Sites:** SgfI-MluI

**Cloning Scheme:**



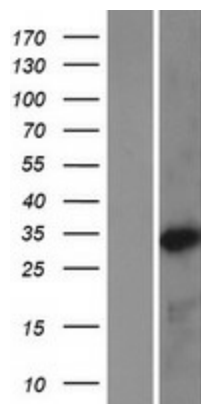
**Plasmid Map:**



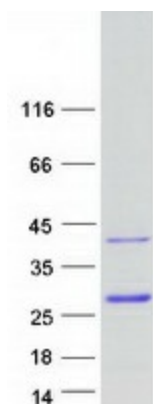
**ACCN:** NM\_001189

<b>ORF Size:</b>	999 bp
<b>OTI Disclaimer:</b>	<p>Due to the inherent nature of this plasmid, standard methods to replicate additional amounts of DNA in E. coli are highly likely to result in mutations and/or rearrangements. Therefore, OriGene does not guarantee the capability to replicate this plasmid DNA. Additional amounts of DNA can be purchased from OriGene with batch-specific, full-sequence verification at a reduced cost. Please contact our customer care team at <a href="mailto:custsupport@origene.com">custsupport@origene.com</a> or by calling 301.340.3188 option 3 for pricing and delivery.</p> <p>The molecular sequence of this clone aligns with the gene accession number as a point of reference only. However, individual transcript sequences of the same gene can differ through naturally occurring variations (e.g. polymorphisms), each with its own valid existence. This clone is substantially in agreement with the reference, but a complete review of all prevailing variants is recommended prior to use. <a href="#">More info</a></p>
<b>OTI Annotation:</b>	This clone was engineered to express the complete ORF with an expression tag. Expression varies depending on the nature of the gene.
<b>Components:</b>	The ORF clone is ion-exchange column purified and shipped in a 2D barcoded Matrix tube containing 10ug of transfection-ready, dried plasmid DNA (reconstitute with 100 ul of water).
<b>Reconstitution Method:</b>	<ol style="list-style-type: none"><li>1. Centrifuge at 5,000xg for 5min.</li><li>2. Carefully open the tube and add 100ul of sterile water to dissolve the DNA.</li><li>3. Close the tube and incubate for 10 minutes at room temperature.</li><li>4. Briefly vortex the tube and then do a quick spin (less than 5000xg) to concentrate the liquid at the bottom.</li><li>5. Store the suspended plasmid at -20°C. The DNA is stable for at least one year from date of shipping when stored at -20°C.</li></ol>
<b>RefSeq:</b>	<a href="#">NM_001189.4</a>
<b>RefSeq Size:</b>	2241 bp
<b>RefSeq ORF:</b>	1002 bp
<b>Locus ID:</b>	579
<b>UniProt ID:</b>	<a href="#">P78367</a>
<b>Cytogenetics:</b>	4p15.33
<b>MW:</b>	34.8 kDa
<b>Gene Summary:</b>	This gene encodes a member of the NK family of homeobox-containing proteins. The encoded protein may play a role in skeletal development. [provided by RefSeq, Jul 2008]

## Product images:



Western blot validation of overexpression lysate (Cat# [LY420079]) using anti-DDK antibody (Cat# [TA50011-100]). Left: Cell lysates from untransfected HEK293T cells; Right: Cell lysates from HEK293T cells transfected with RC211285 using transfection reagent MegaTran 2.0 (Cat# [TT210002]).



Coomassie blue staining of purified NKX3-2 protein (Cat# [TP311285]). The protein was produced from HEK293T cells transfected with NKX3-2 cDNA clone (Cat# RC211285) using MegaTran 2.0 (Cat# [TT210002]).