

Product datasheet for RC211283

KCTD16 (NM_020768) Human Tagged ORF Clone

Product data:

Product Type:	Expression Plasmids
Product Name:	KCTD16 (NM_020768) Human Tagged ORF Clone
Tag:	Myc-DDK
Symbol:	KCTD16
Mammalian Cell Selection:	Neomycin
Vector:	pCMV6-Entry (PS100001)
E. coli Selection:	Kanamycin (25 ug/mL)
ORF Nucleotide Sequence:	>RC211283 ORF sequence Red=Cloning site Blue=ORF Green=Tags(s)

TTTTGTAATACGACTCACTATAGGGCGGCCGGAATTCGTCGACTGGATCCGGTACCGAGGAGATCTGCCGCCCGATCGCC

ATGGCTCTGAGTGGAACTGTAGTCGTTATTATCCTCGAGAACAAGGGTCCGCAGTCCCAACTCCTTCC
CTGAGGTGGTAGAGCTGAATGTCGGGGGTCAAGTTATTTTACTCGCCATTCCACATTGATAAGCATCCC
TCATTCCTCTCTGTGGAAATGTTTTCCCAAAGAGAGACACGGCTAATGATCTAGCCAAGGACTCCAAG
GGAAGGTTTTTCATTGACAGAGATGGATTCTTGTCCGTTATATCTGGACTATCTCAGGGACAGGCAGG
TGGTCTGCCTGATCACTTTCCAGAAAAAGGAACTGAAAAGGGAAGCTGAATACTTCCAGCTCCGAGA
CTTGGTCAAACCTCTGACCCCGATGAAATCAAGCAAAGCCAGATGAATTCTGCCACAGTGACTTTGAA
GATGCCTCCAAAGGAAGCGACACAAGAATCTGCCCCCTTCTCCTGCTCCCTGCCGACCGCAAGTGGG
GTTTCATTACTGTGGTTACAGAGGATCCTGCACCTTGGGCAGAGAGGGACAGGCAGATGCCAAGTTTCG
GAGAGTCCCGGATTTTGGTTTGTGGAAGGATTTCTTGGCAAAGAAGTCTTTGGAGAACTTTGAAT
GAAAGCAGAGACCCTGATCGAGCCCAGAAAGATACACCTCCAGATTTTATCTCAAATCAAGCACCTGG
AAAGGGCTTTTGATATGTTGTGAGAGTGGATTCCACATGGTGGCTGTAACATCATCGGTGACAGCATC
TTTCATCAACCAATACAGATGACAAGATCTGGTCAAGCTACACTGAATATGTCTTCTACCGTGAGCCT
TCCAGATGGTCACCTCACACTGCGATTGCTGCTGCAAGAATGGCAAAGGTGACAAAGAAGGGGAGAGCG
GCACGTCTTGAATGACCTCTCCACATCTAGTGCAGACGCCAGTCTGAGGCCAGCTCTCCCAGGAGAC
GGTCATCTGTGGTCCCCTGACACGCCAGACCAACATCCAGACTCTGGACCGTCCCATCAAGAAGGGCCCT
GTCCAGCTGATCCAACAGTCAGAGATGCGGGCGAAAAGCGACTTACTCCGGACTCTGACTTCAGGCTCCA
GGGAATCGAACATGAGCAGCAAAAAAAGCTGTTAAAGAAAAGCTCTCAATTGAGGAGGAGCTGGAGAA
ATGTATCCAGGATTTCTAAAAATCAAATTCAGATCGGTTTCTGAGAGAAAACATCCTTGGCAATCT
GAACTTTTAAGGAAGTATCATCTA

ACGCGTACGCGGCCGCTCGAGCAGAACTCATCTCAGAAGAGGATCTGGCAGCAAATGATATCCTGGATT
ACAAGGATGACGACGATAAGGTTTAA



[View online »](#)

Protein Sequence: >RC211283 protein sequence
Red=Cloning site Green=Tags(s)

MALSGNCSRYYPREQGSAVPNSFPEVVELNVGGQVYFTRHSTLISIPHSLLWKMFSPKRDTANDLAKDSK
 GRFFIDRDGFLFRYILDYLRDRQVLPDHFPEKGRLKREAEYFQLPDLVKLLTPDEIKQSPDEFCHSDFE
 DASQGS DTRICPPSSLLPADRKWGFITVGYRGSCTLGREGQADAKFRRVPRILVCGRISLAKEVFGETLN
 ESRDPDRAPERYTSRFYLFKFKHLERAFDMLSECGFHMVACNSSVTASFINQYTDKIIWSSYTEYVFYREP
 SRWSPSHDCCKKNGKDKEGESGTSNDLSTSSCDSQSEASSPQETVICGPVTRQTNIIQLDRPIKKG
 VQLIQSEMRRKSDLLRRLTSGSRESNMSSKKKAVKEKLSIEEELEKCIQDFLKIKIPDRFPERKHPWQ
 ELLRKYHL

TRTRPLEQKLISEEDLAANDILDYKDDDDKV

Chromatograms: https://cdn.origene.com/chromatograms/mk6369_f06.zip

Restriction Sites: SgfI-MluI

Cloning Scheme:



ACCN: NM_020768

ORF Size: 1284 bp

OTI Disclaimer: The molecular sequence of this clone aligns with the gene accession number as a point of reference only. However, individual transcript sequences of the same gene can differ through naturally occurring variations (e.g. polymorphisms), each with its own valid existence. This clone is substantially in agreement with the reference, but a complete review of all prevailing variants is recommended prior to use. [More info](#)

OTI Annotation: This clone was engineered to express the complete ORF with an expression tag. Expression varies depending on the nature of the gene.

Components: The ORF clone is ion-exchange column purified and shipped in a 2D barcoded Matrix tube containing 10ug of transfection-ready, dried plasmid DNA (reconstitute with 100 ul of water).

Reconstitution Method:

1. Centrifuge at 5,000xg for 5min.
2. Carefully open the tube and add 100ul of sterile water to dissolve the DNA.
3. Close the tube and incubate for 10 minutes at room temperature.
4. Briefly vortex the tube and then do a quick spin (less than 5000xg) to concentrate the liquid at the bottom.
5. Store the suspended plasmid at -20°C. The DNA is stable for at least one year from date of shipping when stored at -20°C.

RefSeq: [NM_020768.4](#)

RefSeq Size: 5183 bp

RefSeq ORF: 1287 bp

Locus ID: 57528

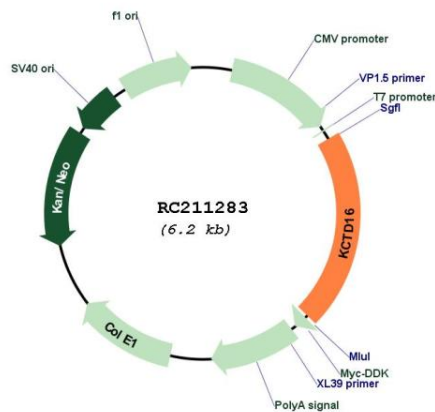
UniProt ID: [Q68DU8](#)

Cytogenetics: 5q31.3

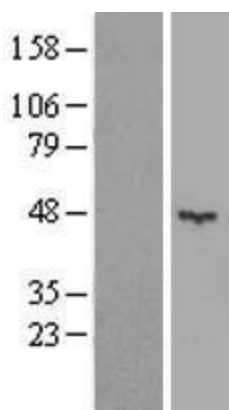
MW: 49.1 kDa

Gene Summary: Auxiliary subunit of GABA-B receptors that determine the pharmacology and kinetics of the receptor response. Increases agonist potency and markedly alter the G-protein signaling of the receptors by accelerating onset and promoting desensitization (By similarity). [UniProtKB/Swiss-Prot Function]

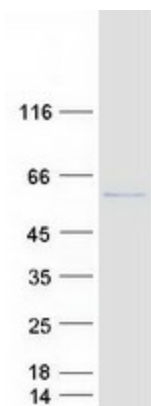
Product images:



Circular map for RC211283



Western blot validation of overexpression lysate (Cat# [LY412323]) using anti-DDK antibody (Cat# [TA50011-100]). Left: Cell lysates from untransfected HEK293T cells; Right: Cell lysates from HEK293T cells transfected with RC211283 using transfection reagent MegaTran 2.0 (Cat# [TT210002]).



Coomassie blue staining of purified KCTD16 protein (Cat# [TP311283]). The protein was produced from HEK293T cells transfected with KCTD16 cDNA clone (Cat# RC211283) using MegaTran 2.0 (Cat# [TT210002]).