

Product datasheet for RC211282

WNT9A (NM_003395) Human Tagged ORF Clone

Product data:

Product Type: Expression Plasmids
Product Name: WNT9A (NM_003395) Human Tagged ORF Clone
Tag: Myc-DDK
Symbol: WNT9A
Synonyms: WNT14
Mammalian Cell Selection: Neomycin
Vector: pCMV6-Entry (PS100001)
E. coli Selection: Kanamycin (25 ug/mL)
ORF Nucleotide Sequence: >RC211282 representing NM_003395
Red=Cloning site Blue=ORF Green=Tags(s)

TTTTGTAATACGACTCACTATAGGGCGGCCGGAATTCGTCGACTGGATCCGGTACCGAGGAGATCTGCC
GCC**CGATCGCC**

ATGCTGGATGGGTCCCCGCTGGCGCGCTGGCTGGCCGCGGCCCTTCGGGCTGACGCTGCTGCTCGCCGCGC
TGCGCCCTTCGGCCGCTACTTCGGGCTGACGGGCAGCGAGCCCCCTGACCATCCTCCCGTGACCCTGGA
GCCAGAGCGGCCGCCAGGCGCACTACAAGGCCTGCGACCGGCTGAAGCTGGAGCGGAAGCAGCGGCGC
ATGTGCCCGGGACCCGGCGTGGCAGAGACGCTGGTGGAGGCCGTGAGCATGAGTGCCTCGAGTGCC
AGTTCCAGTTCGGCTTTGAGCGCTGGAAGTGCACGCTGGAGGGCCGCTACCGGGCCAGCCTGCTCAAGCG
AGGCTTCAAGGAGACTGCCTTCCTCTATGCCATCTCCTCGGCTGGCCTGACGCACGCACTGGCCAAGGCG
TGCAGCGCGGGCCGATGGAGCGCTGTACCTGCGATGAGGCACCCGACCTGGAGAACCGTGGCCCTGGC
AGTGGGGGGGCTGCGGAGACAACCTTAAGTACAGCAGCAAGTTCGTCAAGGAATTCCTGGGCAGACGGTC
AAGCAAGGATCTGCGAGCCCGTGTGGACTTCCACAACAACCTCGTGGGTGTGAAGGTGATCAAGGCTGGG
GTGGAGACCACCTGCAAGTGCCACGGCGTGTGAGGCTCATGCACGGTGGGACCTGCTGGCGGCAGTTGG
CGCCTTTCATGAGGTGGCAAGCATCTGAAGCACAAGTATGAGACGGCACTCAAGGTGGCAGCACCAC
CAATGAAGCTGCCGGCGAGGCAGGTGCCATCTCCCCACCAGGGGCCGTGCCCTCGGGGCGAGGTGGCAGC
GACCCGCTGCCCCGCACTCCAGAGCTGGTGCACCTGGATGACTCGCCTAGCTTCTGCCTGGCTGGCCGCT
TCTCCCCGGGCACCGCTGGCCGTAGGTGCCACCGTGAGAAGAAGTGCAGAGCATCTGCTGTGGCCGCGG
CCATAACACACAGAGCCGGTGGTGACAAGGCCCTGCCAGTGCCAGGTGCGTTGGTGTGCTATGTGGAG
TGCAGGCAGTGACGCAGCGTGAGGAGGCTACACCTGCAAGGGC

ACGCGTACGCGGCCGCTCGAGCAGAACTCATCTCAGAAGAGGATCTGGCAGCAATGATATCCTGGATT
ACAAGGATGACGACGATAAGGTTAA



[View online »](#)

Protein Sequence: >RC211282 representing NM_003395
Red=Cloning site Green=Tags(s)

MLDGSPLARWLAFAFGLTLLLAALRPSAAYFGLTGSEPLTILPLTLEPEAAAQAHYKACDRLKLERKQRR
MCRRDGPVAETLVEAVSMALECFQFRFRWNTLEGRYRASLLKRGFKETAFLYAISSAGLTHALAKA
CSAGRMERCTCDEAPDLENREAWQWGGCGDNLKYSSKFVKEFLGRRSSKDLRARVDFHNNLVGVKVIKAG
VETTCKCHGVSGSCTVRTCWRQLAPFHEVGKHLKHKYETALKVGSSTTNEAAGEAGAI SPPRGRASGAGGS
DPLPRTPELVHLDDSPSFLAGRFSPGTAGRRCHREKNCESICCGRGHNTQSRVVTTRPCQCQVRWCCYVE
CRQCTQREEVYTCKG

TRTRPLEQKLISEEDLAANDILDYKDDDDKV

Chromatograms: https://cdn.origene.com/chromatograms/mg2643_d07.zip

Restriction Sites: SgfI-MluI

Cloning Scheme:



* The last codon before the Stop codon of the ORF

ACCN: NM_003395

ORF Size: 1095 bp

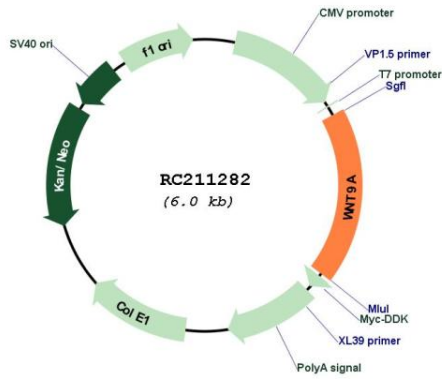
OTI Disclaimer: The molecular sequence of this clone aligns with the gene accession number as a point of reference only. However, individual transcript sequences of the same gene can differ through naturally occurring variations (e.g. polymorphisms), each with its own valid existence. This clone is substantially in agreement with the reference, but a complete review of all prevailing variants is recommended prior to use. [More info](#)

OTI Annotation: This clone was engineered to express the complete ORF with an expression tag. Expression varies depending on the nature of the gene.

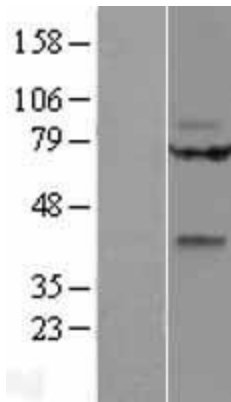
Components: The ORF clone is ion-exchange column purified and shipped in a 2D barcoded Matrix tube containing 10ug of transfection-ready, dried plasmid DNA (reconstitute with 100 ul of water).

Reconstitution Method:	<ol style="list-style-type: none">1. Centrifuge at 5,000xg for 5min.2. Carefully open the tube and add 100ul of sterile water to dissolve the DNA.3. Close the tube and incubate for 10 minutes at room temperature.4. Briefly vortex the tube and then do a quick spin (less than 5000xg) to concentrate the liquid at the bottom.5. Store the suspended plasmid at -20°C. The DNA is stable for at least one year from date of shipping when stored at -20°C.
RefSeq:	<u>NM_003395.1, NP_003386.1</u>
RefSeq Size:	1631 bp
RefSeq ORF:	1098 bp
Locus ID:	7483
UniProt ID:	<u>O14904</u>
Cytogenetics:	1q42.13
Domains:	wnt
Protein Families:	Secreted Protein, Transmembrane
Protein Pathways:	Basal cell carcinoma, Hedgehog signaling pathway, Melanogenesis, Pathways in cancer, Wnt signaling pathway
MW:	40.1 kDa
Gene Summary:	The WNT gene family consists of structurally related genes that encode secreted signaling proteins. These proteins have been implicated in oncogenesis and in several developmental processes, including regulation of cell fate and patterning during embryogenesis. This gene is a member of the WNT gene family. It is expressed in gastric cancer cell lines. The protein encoded by this gene shows 75% amino acid identity to chicken Wnt14, which has been shown to play a central role in initiating synovial joint formation in the chick limb. This gene is clustered with another family member, WNT3A, in the chromosome 1q42 region. [provided by RefSeq, Jul 2008]

Product images:



Circular map for RC211282



Western blot validation of overexpression lysate (Cat# [LY401158]) using anti-DDK antibody (Cat# [TA50011-100]). Left: Cell lysates from untransfected HEK293T cells; Right: Cell lysates from HEK293T cells transfected with RC211282 using transfection reagent MegaTran 2.0 (Cat# [TT210002]).