

Product datasheet for RC211280

RNF152 (NM_173557) Human Tagged ORF Clone

Product data:

Product Type: Expression Plasmids
 Product Name: RNF152 (NM_173557) Human Tagged ORF Clone
 Tag: Myc-DDK
 Symbol: RNF152
 Mammalian Cell Selection: Neomycin
 Vector: pCMV6-Entry (PS100001)
 E. coli Selection: Kanamycin (25 ug/mL)
 ORF Nucleotide Sequence: >RC211280 ORF sequence
 Red=Cloning site Blue=ORF Green=Tags(s)

TTTTGTAATACGACTCACTATAGGGCGGCCGGAATTCGTCGACTGGATCCGGTACCGAGGAGATCTGCC
 GCC**CGATCGCC**

ATGGAGACGCTGTCCCAGGACTCTCTGCTGGAATGTCAGATCTGTTTCAATTACTACAGCCCCGGCGCA
 GGCCCAAGTTGCTGGACTGCAAGCACACCTGCTGTTTCAGTGTGCCTGCAGCAGATGAGGACCAGCCAGAA
 GGATGTGCGGTGCCCTGGTGCCGCGGTGCACCAAGTCGCTCCCGCTTCTCCGTGTCGCAGCTCCCG
 GACGACCCGGAGGTCCTGGTGTATCGCCATTCACACACTCCGAACACACCCCGTCTTCATCAAAC
 TTCCCAGCAATGGGTGCTACATGCTGCCCTGCCATCTCCAAGGAGCGTGGCTGCTGCCCGGAGACAT
 GGGCTGCCGCTGCTGCCCGGAGCCAGCAGAAGTCCGTACCGTGGTGACCATCCCTGCTGAACAGCAG
 CCTCTGCAAGGTGGGGTCCCCAGGAGCGGTGGAGGAGCAGGACAGCGGGGCGTGGTAAAAGCT
 CCACCTGGTCGGGGTGTGCACTGTCTTGGTGGCTTGGCTTCTCTCCTCGGCATCGTGCT
 TCACAACATGCTTGCATTTCTAAGCGTTCACCTGTGATATCCTGTGGC

ACGCGTACGCGGCCGCTCGAGCAGAACTCATCTCAGAAGAGGATCTGGCAGCAAATGATATCCTGGATT
 ACAAGGATGACGACGATAAGGTTTAA

Protein Sequence: >RC211280 protein sequence
 Red=Cloning site Green=Tags(s)

METLSQDSLLEQCICFNYYSPRRPKLLDCKHTCCSVCLQQMRTSQKDVRCPWCRGVTKLPPGFSVSQLP
 DDPEVLAVIAIPHTSEHTPVFIKLPNSNGCYMLPLPISKERALLPGDMGCRLLPGSQQKSVTVVTIPAEQQ
 PLQGGAPQEAVEEEQDRRGVVKSSWVGVCTVILVACLVFLLGIVLHNMSCISKRFVVISCG

TRTRPLEQKLISEEDLAANDILDYKDDDDKV

Chromatograms: https://cdn.origene.com/chromatograms/mk6369_d11.zip



[View online »](#)

Restriction Sites: SgfI-MluI

Cloning Scheme:



ACCN: NM_173557

ORF Size: 609 bp

OTI Disclaimer: The molecular sequence of this clone aligns with the gene accession number as a point of reference only. However, individual transcript sequences of the same gene can differ through naturally occurring variations (e.g. polymorphisms), each with its own valid existence. This clone is substantially in agreement with the reference, but a complete review of all prevailing variants is recommended prior to use. [More info](#)

OTI Annotation: This clone was engineered to express the complete ORF with an expression tag. Expression varies depending on the nature of the gene.

Components: The ORF clone is ion-exchange column purified and shipped in a 2D barcoded Matrix tube containing 10ug of transfection-ready, dried plasmid DNA (reconstitute with 100 ul of water).

- Reconstitution Method:**
1. Centrifuge at 5,000xg for 5min.
 2. Carefully open the tube and add 100ul of sterile water to dissolve the DNA.
 3. Close the tube and incubate for 10 minutes at room temperature.
 4. Briefly vortex the tube and then do a quick spin (less than 5000xg) to concentrate the liquid at the bottom.
 5. Store the suspended plasmid at -20°C. The DNA is stable for at least one year from date of shipping when stored at -20°C.

RefSeq: [NM_173557.3](#)

RefSeq Size: 1805 bp

RefSeq ORF: 612 bp

Locus ID: 220441

UniProt ID: [Q8N8N0](#)

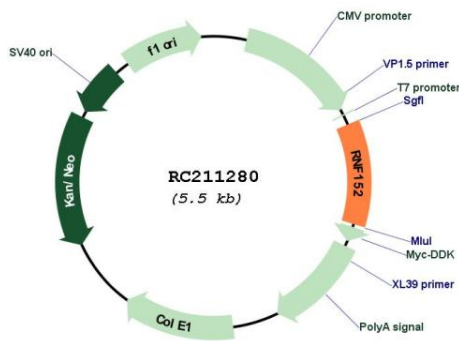
Cytogenetics: 18q21.33

Protein Families: Transmembrane

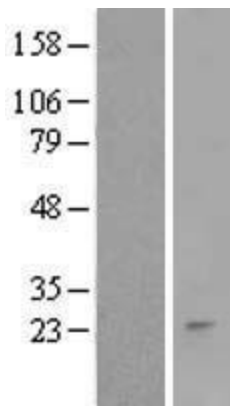
MW: 22.4 kDa

Gene Summary: E3 ubiquitin-protein ligase mediating 'Lys-63'-linked polyubiquitination of RRAGA in response to amino acid starvation. Thereby, regulates mTORC1 signaling and plays a role in the cellular response to amino acid availability (PubMed:25936802). Also mediates 'Lys-48'-linked polyubiquitination of target proteins and their subsequent targeting to the proteasome for degradation. Induces apoptosis when overexpressed (PubMed:21203937).[UniProtKB/Swiss-Prot Function]

Product images:



Circular map for RC211280



Western blot validation of overexpression lysate (Cat# [LY406468]) using anti-DDK antibody (Cat# [TA50011-100]). Left: Cell lysates from untransfected HEK293T cells; Right: Cell lysates from HEK293T cells transfected with RC211280 using transfection reagent MegaTran 2.0 (Cat# [TT210002]).