

Product datasheet for RC211273

KLF8 (NM_007250) Human Tagged ORF Clone

Product data:

Product Type:	Expression Plasmids
Product Name:	KLF8 (NM_007250) Human Tagged ORF Clone
Tag:	Myc-DDK
Symbol:	KLF8
Synonyms:	BKLF3; ZNF741
Mammalian Cell Selection:	Neomycin
Vector:	pCMV6-Entry (PS100001)
E. coli Selection:	Kanamycin (25 ug/mL)
ORF Nucleotide Sequence:	>RC211273 ORF sequence Red=Cloning site Blue=ORF Green=Tags(s)

TTTTGTAATACGACTCACTATAGGGCGGCCGGAATTCGTCGACTGGATCCGGTACCGAGGAGATCTGCC
GCC**CGATCGCC**

ATGGTCGATATGGATAAACTCATAAACTTGGAGGTCCAACCTAATTCAGAAGGTGGCTCAATGCAGG
TATTCAAGCAGGTCAGTCTTCTGTTCCGGAACAGAGATCCCCCTGAGATAGAATACAGAAGTAATATGAC
TTCTCCAACACTCCTGGATGCCAACCCATGGAGAACCCAGCACTGTTAATGACATCAAGATTGAGCCC
CCAGAAGAAGCTTTGGCTAGTGATTTAGCCTGCCCAAGTGAACCAAGTTGACCTCTCCTTTACAAGC
CCAAGGCTCCTCTCCAGCCTGCTAGCATGCTACAAGCTCCAATACGTCCCCCAAGCCACAGTCTTCTCC
CCAGACCTTGTGGTGTCCACGTCAACATCTGACATGAGCACTTACGAAACATTCTACTGTTCTGACC
CCAGGCTCTGCTGACCTCCTCTCAGAGCACTGGTAGCCAGCAGATCTTACATGTCATTACACATATCC
CCTCAGTCAGTCTGCCAAATAAGATGGGTGGCCTGAAGACCATCCCAGTGGTAGTGCAGTCTCTGCCAT
GGTGTATACTACTTTGCCTGCAGATGGGGGCCCTGCAGCCATTACAGTCCCACCTATTGGAGGAGATGGT
AAAAATGCTGGATCAGTGAAGTTGACCCACCTCCATGTCTCCACTGGAATTCGAAGTACAGTGAAG
AGAGTACAATTGAGAGTGGATCCTCAGCCTTGCAGAGTCTGCAGGACTACAGCAAGAACCAGCAGCAAT
GGCCCAAATGCAGGGAGAAGAGTCGCTTGAAGAGAAGACGGATTACCAATGTGACTTTGCAGGA
TGCAGCAAAGTGTACACCAAAGCTCTCACCTGAAAGCTCACCGCAGAATCCATACAGGAGAGAAGCCTT
ATAAATGCACCTGGGATGGCTGCTCCTGGAAATTTGCTCGCTCAGATGAGCTCACTCGCCATTTCCGCAA
GCACACAGGCATCAAGCCTTTTCGGTGCACAGACTGCAACCGCAGCTTTTCTCGTTCTGACCACCTGTCC
CTGCATCGCCGTCCGATGACACCATG

AG**CGGACCG**ACGCGTACGCGGCCGCTCGAGCAGAACTCATCTCAGAAGAGGATCTGGCAGCAAATGATATCC
TGGATTACAAGGATGACGACGATAAGGTTTAA



[View online »](#)

Protein Sequence: >RC211273 protein sequence
Red=Cloning site Green=Tags(s)

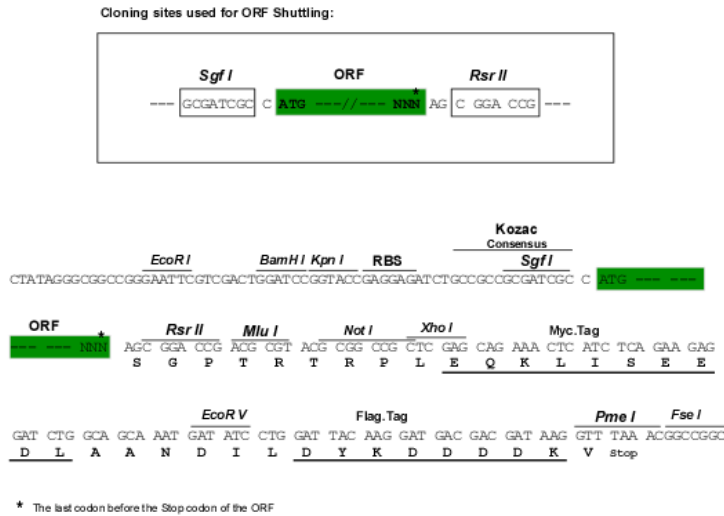
MVDMDKL INNLEVQLNSEGGSMQVFKQVTASVRNRDPPEIEYRSNMTSPTLLDANPMENPALFNDIKIEP
 PEELLASDFSLPQVEPVDLSFHKPKAPLQPASMLQAPIRPPKQSSPQTLVVSTSTSDMSTSANIPTVLT
 PGSVL TSSQSTGSQQILHVIHTIPSVSLPNKMGGGLKTIPIVVVQSLPMVYTTLPADGGPAAITVPLIGGDG
 KNAGSVKVDPTSMSPLEIPSDSEESTIESGSSALQSLQGLQQEPAAMAQMGEESLDLKRRIHQCDFAG
 CSKVYTKSSHLKAHRIHTGEKPYKCTWDGCSWKFARSDDELTRHFRKHTGIKPFRCCTDCNRSFSRSDHLS
 LHRRRHDTM

SGPTRTRPLEQKLI SEEDLAANDILDYKDDDDKV

Chromatograms: https://cdn.origene.com/chromatograms/mk6621_a09.zip

Restriction Sites: SgfI-RsrII

Cloning Scheme:



ACCN: NM_007250

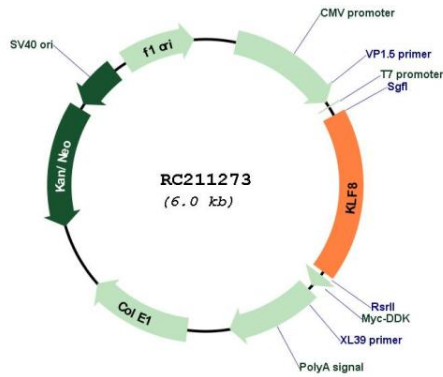
ORF Size: 1077 bp

OTI Disclaimer: Due to the inherent nature of this plasmid, standard methods to replicate additional amounts of DNA in E. coli are highly likely to result in mutations and/or rearrangements. Therefore, OriGene does not guarantee the capability to replicate this plasmid DNA. Additional amounts of DNA can be purchased from OriGene with batch-specific, full-sequence verification at a reduced cost. Please contact our customer care team at custsupport@origene.com or by calling 301.340.3188 option 3 for pricing and delivery.

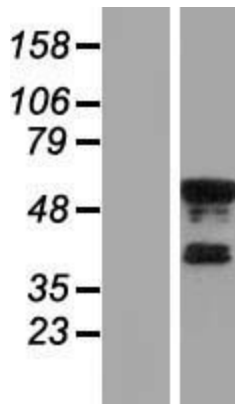
The molecular sequence of this clone aligns with the gene accession number as a point of reference only. However, individual transcript sequences of the same gene can differ through naturally occurring variations (e.g. polymorphisms), each with its own valid existence. This clone is substantially in agreement with the reference, but a complete review of all prevailing variants is recommended prior to use. [More info](#)

OTI Annotation:	This clone was engineered to express the complete ORF with an expression tag. Expression varies depending on the nature of the gene.
Components:	The ORF clone is ion-exchange column purified and shipped in a 2D barcoded Matrix tube containing 10ug of transfection-ready, dried plasmid DNA (reconstitute with 100 ul of water).
Reconstitution Method:	<ol style="list-style-type: none">1. Centrifuge at 5,000xg for 5min.2. Carefully open the tube and add 100ul of sterile water to dissolve the DNA.3. Close the tube and incubate for 10 minutes at room temperature.4. Briefly vortex the tube and then do a quick spin (less than 5000xg) to concentrate the liquid at the bottom.5. Store the suspended plasmid at -20°C. The DNA is stable for at least one year from date of shipping when stored at -20°C.
RefSeq:	NM_007250.5 , NP_009181.2
RefSeq Size:	5434 bp
RefSeq ORF:	1080 bp
Locus ID:	11279
UniProt ID:	O95600
Cytogenetics:	Xp11.21
Protein Families:	Transcription Factors
MW:	39.3 kDa
Gene Summary:	This gene encodes a protein which is a member of the Sp/KLF family of transcription factors. Members of this family contain a C-terminal DNA-binding domain with three Kruppel-like zinc fingers. The encoded protein is thought to play an important role in the regulation of epithelial to mesenchymal transition, a process which occurs normally during development but also during metastasis. A pseudogene has been identified on chromosome 16. Alternative splicing results in multiple transcript variants. [provided by RefSeq, Apr 2009]

Product images:



Circular map for RC211273



Western blot validation of overexpression lysate (Cat# [LY416090]) using anti-DDK antibody (Cat# [TA50011-100]). Left: Cell lysates from untransfected HEK293T cells; Right: Cell lysates from HEK293T cells transfected with RC211273 using transfection reagent MegaTran 2.0 (Cat# [TT210002]).