

## Product datasheet for **RC211271**

### TTC19 (NM\_017775) Human Tagged ORF Clone

#### Product data:

Product Type:	Expression Plasmids
Product Name:	TTC19 (NM_017775) Human Tagged ORF Clone
Tag:	Myc-DDK
Symbol:	TTC19
Synonyms:	2010204O13Rik; MC3DN2
Mammalian Cell Selection:	Neomycin
Vector:	pCMV6-Entry (PS100001)
E. coli Selection:	Kanamycin (25 ug/mL)



[View online »](#)

**ORF Nucleotide Sequence:**

>RC211271 representing NM\_017775  
 Red=Cloning site Blue=ORF Green=Tags(s)

TTTTGTAATACGACTCACTATAGGGCGGCCGGAATTCGTCGACTGGATCCGGTACCGAGGAGATCTGCC  
 GCC**CGGATCGCC**

ATGGCGCAGCCACACACGACCTCGTCCGTACTTCGCGCGCTCTCTGCACCGCCGCCCATCTCGT  
 CAGGAGCTCCTCCACAACCGCCGCAACTACGGCCATCGCGCCGAGGACACGCCCTCCACACCGGC  
 GGACCGCCGCGAGCTCCAGCTGACTGCGCCTACCTGTGGAGGATCCTGACCCCCCGCGGGCAGGGCG  
 AGACGGAGTGACGTGGGGCGCTCATCGCGCTGCGGACGAGGGATGTCTGTCTCAGTCGTAGGGCC  
 CGGCCAATCCGGAGGGCGCTCGGCGCTGGTGGGGGCCAGGAGCGCTGTGGCTGCAGTGCAGAGG  
 ACGCGCGGGAGCATGTTCCGGCTCTGAGCTGGAGCCTGGGCGGAGGCTTCTGCGGGCCGCGGGCGG  
 CGGTGCCGGGCTGCTCCGCGCCTGCTCCCGGGCTGGCAGGAGTCCGGGGCCGAGGTGCAGGTGC  
 CGCCATCCGAGTCGCGCCGACGGCCGGGGCCAGGCCCTGCTGCCGCTGCTGGCAGCGCTCGCCTGGT  
 CTCGAGGCCCGTGCGGCAGAGGAGGAGGAGCAGCAGGGAGCCGACGGGGCCGCTGCCGAGGACGGGGC  
 GACGAGGCCGAGGAGAGATCATCCAGCTGCTGAAGCGAGCAAGTTGAGCATTATGAAAGATGAGCCAG  
 AAGAGGCTGAGTTAATTTGCATGACGCTCTTCGTCTCGCTATCAGACTGATAACAAGAAGGCCATCAC  
 TTACACTTATGATTTGATGGCCAACTTAGCATTATACGGGGTCAGTTGAAAATGCTGAACAACATTTT  
 AAAGCAACAATGAGTTACCTCCTTGAGGGGGCATGAAGCAGGAGGACAATGCAATAATTGAAATTTCC  
 TAAAGCTGGCCAGTATCTATGCTGCGCAGAACAGACAGGAATTTGCTGTTGCTGGCTATGAATTTGAT  
 TTCAACTCTAGAGGAAAAATTTGAAAGAAAAAGGAATTAGCAGAAGACATTATGTCAGTGAAGAGAAA  
 GCCAATACCCACCTCCTTTGGGATGTGCTTAGACGCTGTGCTCGCTACCTTCTGTTCTCCAAGCACC  
 CGTCACAGGCACAAAGGATGTATGAAAAAGCTCTGCAGATTTCTGAAGAAATACAAGGAGAAAGACCC  
 ACAGACCATTTGCTGATGAGTGACCTGGCTACTACCCTGGATGCACAGGGCCGCTTTGATGAGCCAT  
 ATTTATATGCAAAGGCATCAGATCTGGCAAGACAGATAAATCATCCTGAGCTACACATGGTACTCAGTA  
 ATCTAGCTGCAGTTTTGATGCACAGAGAACGATATACACAAGCAAAAGAGATCTACCAGGAAGCACTGAA  
 GCAAGCAAGCTGAAAAAGATGAAATTTCTGTACAACACATCAGGGAAGAGTTGGCTGAGCTGTCAAAG  
 AAAAGTAGACCTTTGACAAATTCTGTCAAGCTC

**ACGGTACGCGGCCGCTCGAGCAGAACTCATCTCAGAAGAGGATCTGGCAGCAATGATATCCTGGATT  
 ACAAGGATGACGACGATAAGGTTTAA**

**Protein Sequence:**

>RC211271 representing NM\_017775  
 Red=Cloning site Green=Tags(s)

MAQPHTTSVPYFARSPAPPPSRSGAPPQPPATLRPSRRRTRPPRPADRRDAPADCAYLWRILTPRRGRA  
 RRSVDGARHRACGRRDVLVSRQGPANPEGARRVVGQERVWPAVRRRGRGSMFRLLSWSLGRGFLRAAGR  
 RCRGCSARLLPGLAGGPPEVQVPPSRVAPHGRGPGLPLLAALAWF SRPAAAAEEEEQQGADGAAEDGA  
 DEAEAEIIQLLKRAKLSIMKDEPEEAELILHDALRLAYQTDNKKAITTYDLMANLAFIRGQLENAEQLF  
 KATMSYLLGGGMKQEDNAIEISLKLASIIYAAQNRQEFVAVAGYEF CISTLEEKIEREKELAEIDMSVEEK  
 ANTHLLGMCLDACYRYLLFSKQPSQAQRMYEKALQISEEIQGERHPQTI VLMSDLATTLDAQGRFDEAY  
 IYMQRASDLARQINHPPELHMVLSNLAAVLMHRERYTQAKEIYQEALKQAKLKKDEISVQHIREELAE LSK  
 KSRPLTNSVKL

**TRTRPLEQKLISEEDLAANDILDYKDDDDKV**

**Chromatograms:**

[https://cdn.origene.com/chromatograms/mg3117\\_b07.zip](https://cdn.origene.com/chromatograms/mg3117_b07.zip)

**Restriction Sites:**

Sgfl-Mlul

**Cloning Scheme:**


**ACCN:** NM\_017775

**ORF Size:** 1503 bp

**OTI Disclaimer:** The molecular sequence of this clone aligns with the gene accession number as a point of reference only. However, individual transcript sequences of the same gene can differ through naturally occurring variations (e.g. polymorphisms), each with its own valid existence. This clone is substantially in agreement with the reference, but a complete review of all prevailing variants is recommended prior to use. [More info](#)

**OTI Annotation:** This clone was engineered to express the complete ORF with an expression tag. Expression varies depending on the nature of the gene.

**Components:** The ORF clone is ion-exchange column purified and shipped in a 2D barcoded Matrix tube containing 10ug of transfection-ready, dried plasmid DNA (reconstitute with 100 ul of water).

- Reconstitution Method:**
1. Centrifuge at 5,000xg for 5min.
  2. Carefully open the tube and add 100ul of sterile water to dissolve the DNA.
  3. Close the tube and incubate for 10 minutes at room temperature.
  4. Briefly vortex the tube and then do a quick spin (less than 5000xg) to concentrate the liquid at the bottom.
  5. Store the suspended plasmid at -20°C. The DNA is stable for at least one year from date of shipping when stored at -20°C.

**Note:** Plasmids are not sterile. For experiments where strict sterility is required, filtration with 0.22um filter is required.

**RefSeq:** [NM\\_017775.2](#), [NP\\_060245.2](#)

**RefSeq Size:** 2784 bp

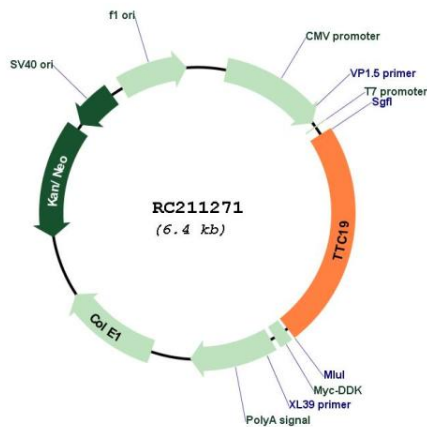
**RefSeq ORF:** 1143 bp

**Locus ID:** 54902

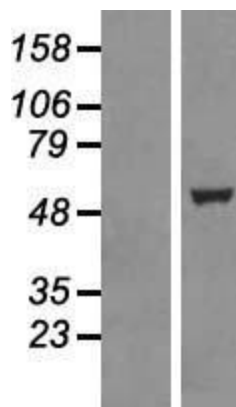
**UniProt ID:** [Q6DKK2](#)  
**Cytogenetics:** 17p12  
**Domains:** TPR  
**MW:** 55.6 kDa

**Gene Summary:** This gene encodes a protein with a tetratricopeptide repeat (TPR) domain containing several TPRs of about 34 aa each. These repeats are found in a variety of organisms including bacteria, fungi and plants, and are involved in a variety of functions including protein-protein interactions. This protein is embedded in the inner mitochondrial membrane and is involved in the formation of the mitochondrial respiratory chain III. It has also been suggested that this protein plays a role in cytokinesis. Mutations in this gene cause mitochondrial complex III deficiency. Alternatively spliced transcript variants have been found for this gene. [provided by RefSeq, Sep 2012]

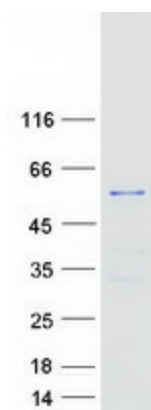
### Product images:



Circular map for RC211271



Western blot validation of overexpression lysate (Cat# [LY413548]) using anti-DDK antibody (Cat# [TA50011-100]). Left: Cell lysates from untransfected HEK293T cells; Right: Cell lysates from HEK293T cells transfected with RC211271 using transfection reagent MegaTran 2.0 (Cat# [TT210002]).



Coomassie blue staining of purified TTC19 protein (Cat# [TP311271]). The protein was produced from HEK293T cells transfected with TTC19 cDNA clone (Cat# RC211271) using MegaTran 2.0 (Cat# [TT210002]).