

Product datasheet for RC211269

C20orf79 (SCP2D1) (NM_178483) Human Tagged ORF Clone

Product data:

Product Type: Expression Plasmids
Product Name: C20orf79 (SCP2D1) (NM_178483) Human Tagged ORF Clone
Tag: Myc-DDK
Symbol: C20orf79
Synonyms: C20orf79; dj1068E13.2; HSD22
Mammalian Cell Selection: Neomycin
Vector: pCMV6-Entry (PS100001)
E. coli Selection: Kanamycin (25 ug/mL)
ORF Nucleotide Sequence: >RC211269 ORF sequence
Red=Cloning site Blue=ORF Green=Tags(s)

TTTTGTAATACGACTCACTATAGGGCGGCCGGAATTCGTCGACTGGATCCGGTACCGAGGAGATCTGCC
GCC**CGATCGCC**

ATGTGGAAGAGAAGTGACCATCAACCAAGATCAAAGCAGAGGATGGACCTCTGGTGGGCCAGTTCGAGG
TTCTGGGTTTCAGTTCAGAACCTGCCATGCCACATCCTCTAGAGCTGTCAGAATTTGAGAGCTTCCCAGT
GTTTCAGGACATTAGGCTTCACATCAGGGAAGTGGGAGCTCAATTGGTCAAGAAAGTCAATGCCGTCTTT
CAGCTGGACATCACAAAAATGGGAAGACCATTTTGGGTGGACCATTGATCTGAAGAATGGTTCTGGGG
ACATGTATCCGGGACCTGCCAGGCTCCCAGCAGACACTGTCTTTACAATCCGGGAGTCTGTCTTTATGGA
GCTGGTTTTGGCAAAATGAACCCGAGAAAGGCTTTCCTTGGCCGAAAGTTCAAAGTGAGTGGCAAGGTT
CTGCTTAGCTGGAAGCTGGAAGGGTTTTCAAAGACTGGGCTAAATTT

ACGCGTACGCGGCCGCTCGAGCAGAACTCATCTCAGAAGAGGATCTGGCAGCAAATGATATCCTGGATT
ACAAGGATGACGACGATAAGGTTTAA

Protein Sequence: >RC211269 protein sequence
Red=Cloning site Green=Tags(s)
MWKRSDHQPKIKAEDGPLVGFVLSVPEPAMPHLELSEFESFPVFQDIRLHIREVGAQLVKKVNAV
QLDITKNGKILRWTIDLKNGSGDMYPGARLPADTVFTIPESVFMELVLGKMNPKAFLAGKFKVSGKV
LLSWKLERVFKDWAKF

TRTRPLEQKLISEEDLAANDILDYKDDDDKV

Chromatograms: https://cdn.origene.com/chromatograms/mk6369_e04.zip



[View online >](#)

Restriction Sites: SgfI-MluI

Cloning Scheme:



ACCN: NM_178483

ORF Size: 468 bp

OTI Disclaimer: The molecular sequence of this clone aligns with the gene accession number as a point of reference only. However, individual transcript sequences of the same gene can differ through naturally occurring variations (e.g. polymorphisms), each with its own valid existence. This clone is substantially in agreement with the reference, but a complete review of all prevailing variants is recommended prior to use. [More info](#)

OTI Annotation: This clone was engineered to express the complete ORF with an expression tag. Expression varies depending on the nature of the gene.

Components: The ORF clone is ion-exchange column purified and shipped in a 2D barcoded Matrix tube containing 10ug of transfection-ready, dried plasmid DNA (reconstitute with 100 ul of water).

Reconstitution Method:

1. Centrifuge at 5,000xg for 5min.
2. Carefully open the tube and add 100ul of sterile water to dissolve the DNA.
3. Close the tube and incubate for 10 minutes at room temperature.
4. Briefly vortex the tube and then do a quick spin (less than 5000xg) to concentrate the liquid at the bottom.
5. Store the suspended plasmid at -20°C. The DNA is stable for at least one year from date of shipping when stored at -20°C.

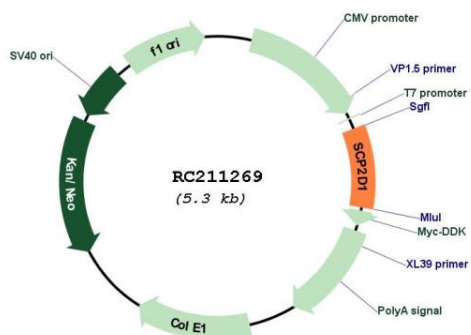
RefSeq: [NM_178483.3](#)

RefSeq Size: 677 bp

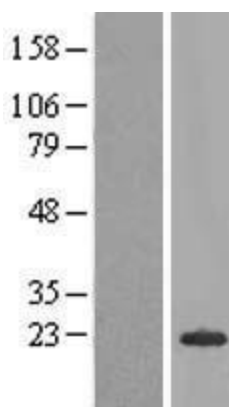
RefSeq ORF: 471 bp

Locus ID: 140856

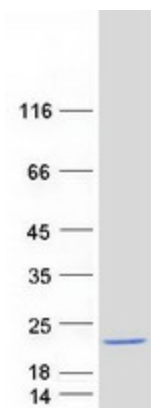
UniProt ID: [Q9UJQ7](#)
 Cytogenetics: 20p11.23
 MW: 17.7 kDa

Product images:


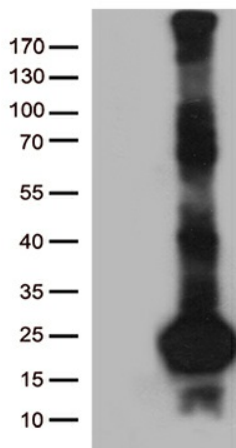
Circular map for RC211269



Western blot validation of overexpression lysate (Cat# [LY405885]) using anti-DDK antibody (Cat# [TA50011-100]). Left: Cell lysates from untransfected HEK293T cells; Right: Cell lysates from HEK293T cells transfected with RC211269 using transfection reagent MegaTran 2.0 (Cat# [TT210002]).



Coomassie blue staining of purified SCP2D1 protein (Cat# [TP311269]). The protein was produced from HEK293T cells transfected with SCP2D1 cDNA clone (Cat# RC211269) using MegaTran 2.0 (Cat# [TT210002]).



HEK293T cells were transfected with the pCMV6-ENTRY control (Cat# [PS100001], Left lane) or pCMV6-ENTRY C20orf79 (Cat# RC211269, Right lane) cDNA for 48 hrs and lysed. Equivalent amounts of cell lysates (5 ug per lane) were separated by SDS-PAGE and immunoblotted with anti-C20orf79 (Cat# [TA812878])(1:2000). Positive lysates [LY405885] (100ug) and [LC405885] (20ug) can be purchased separately from OriGene.