

Product datasheet for RC211260

Cyclin B2 (CCNB2) (NM_004701) Human Tagged ORF Clone

Product data:

Product Type:	Expression Plasmids
Product Name:	Cyclin B2 (CCNB2) (NM_004701) Human Tagged ORF Clone
Tag:	Myc-DDK
Symbol:	Cyclin B2
Synonyms:	HsT17299
Mammalian Cell Selection:	Neomycin
Vector:	pCMV6-Entry (PS100001)
E. coli Selection:	Kanamycin (25 ug/mL)
ORF Nucleotide Sequence:	>RC211260 ORF sequence Red=Cloning site Blue=ORF Green=Tags(s)

TTTTGTAATACGACTCACTATAGGGCGCCGGGAATTCGTCGACTGGATCCGGTACCGAGGAGATCTGCC
GCC**CGATCGCC**

ATGGCGCTGCTCCGACGCCCGACGGTGTCCAGTGATTTGGAGAATATTGACACAGGAGTTAATTCTAAAG
TTAAGAGTCATGTGACTATTAGGCGAACTGTTTTAGAAGAAATTGGAAATAGAGTTACAACCAGAGCAGC
ACAAGTAGCTAAGAAAGCTCAGAACACCAAAGTCCAGTTCACCCACCAAAACAACAAATGTCAACAAA
CAACTGAAACCTACTGCTTCTGTCAAACAGTACAGATGGAAAAGTTGGCTCAAAGGGTCTTCTCCCA
CACCTGAGGATGTCTCCATGAAGGAAGAGAATCTCTGCCAAGCTTTTTCTGATGCCTTGCTGCAAAAT
CGAGGACATTGATAACGAAGATTGGGAGAACCCTCAGCTCTGCAGTGACTACGTTAAGGATATCTATCAG
TATCTCAGGCAGCTGGAGTTTTGCAGTCCATAAACCCACATTTCTTAGATGGAAGAGATATAAATGGAC
GCATGCGTGCCATCCTAGTGGATTGGCTGGTACAAGTCCACTCCAAGTTTAGGCTTCTGCAGGAGACTCT
GTACATGTGCGTTGGCATTATGGATCGATTTTTACAGGTTTCAGCCAGTTTCCCGGAAGAAGCTTCAATTA
GTTGGGATTACTGCTCTGCTCTTGGCTTCCAAGTATGAGGAGATGTTTTCTCAAATATTGAAGACTTTG
TTTACATCACAGACAATGCTTATACCAGTTCCAAATCCGAGAAATGGAACTCTAATTTGAAAGAATT
GAAATTTGAGTTGGGTCGACCCCTGGCACTACACTTCTTAAGGCGAGCATCAAAGCCGGGAGGTTGAT
GTTGAACAGCACACTTTAGCCAAGTATTTGATGGAGCTGACTCTCATCGACTATGATATGGTGCATTATC
ATCCTTCTAAGGTAGCAGCAGCTGCTTCCCTGCTTGTCTCAGAAGTTCTAGGACAAGGAAATGGAACTT
AAAGCAGCAGTATTACACAGGATACACAGAGAATGAAGTATTGGAAGTCATGCAGCACATGGCCAAGAAT
GTGGTGAAGTAAATGAAAACCTAACTAAATTCATCGCCATCAAGAATAAGTATGCAAGCAGCAAACCTCC
TGAAGATCAGCATGATCCCTCAGCTGAACCTCAAAGCCGTCAAAGACCTTGCTCCCCACTGATAGGAAG
GTCC

ACGCGTACGCGGCCGCTCGAGCAGAACTCATCTCAGAAGAGGATCTGGCAGCAAATGATATCCTGGATT
ACAAGGATGACGACGATAAGGTTTAA



[View online >](#)

Reconstitution Method:

1. Centrifuge at 5,000xg for 5min.
2. Carefully open the tube and add 100ul of sterile water to dissolve the DNA.
3. Close the tube and incubate for 10 minutes at room temperature.
4. Briefly vortex the tube and then do a quick spin (less than 5000xg) to concentrate the liquid at the bottom.
5. Store the suspended plasmid at -20°C. The DNA is stable for at least one year from date of shipping when stored at -20°C.

RefSeq: [NM_004701.4](#)

RefSeq Size: 1566 bp

RefSeq ORF: 1197 bp

Locus ID: 9133

UniProt ID: [O95067](#)

Cytogenetics: 15q22.2

Domains: cyclin_C, CYCLIN, cyclin

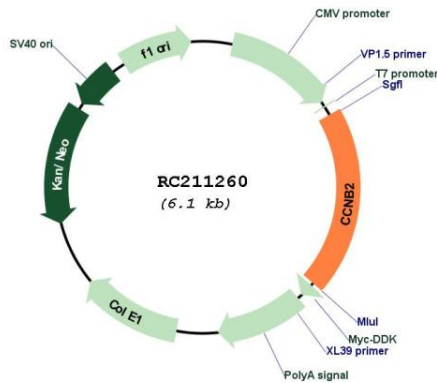
Protein Families: Druggable Genome, Stem cell - Pluripotency

Protein Pathways: Cell cycle, Oocyte meiosis, p53 signaling pathway, Progesterone-mediated oocyte maturation

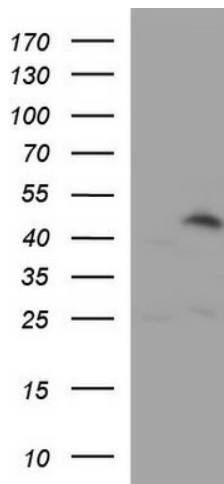
MW: 45.3 kDa

Gene Summary: Cyclin B2 is a member of the cyclin family, specifically the B-type cyclins. The B-type cyclins, B1 and B2, associate with p34cdc2 and are essential components of the cell cycle regulatory machinery. B1 and B2 differ in their subcellular localization. Cyclin B1 co-localizes with microtubules, whereas cyclin B2 is primarily associated with the Golgi region. Cyclin B2 also binds to transforming growth factor beta RII and thus cyclin B2/cdc2 may play a key role in transforming growth factor beta-mediated cell cycle control. [provided by RefSeq, Jul 2008]

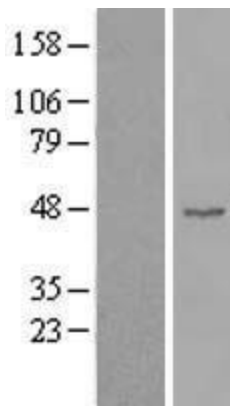
Product images:



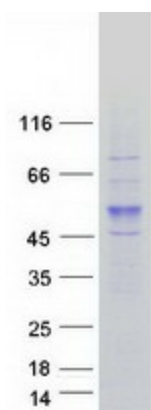
Circular map for RC211260



HEK293T cells were transfected with the pCMV6-ENTRY control (Cat# [PS100001], Left lane) or pCMV6-ENTRY CCNB2 (Cat# RC211260, Right lane) cDNA for 48 hrs and lysed. Equivalent amounts of cell lysates (5 ug per lane) were separated by SDS-PAGE and immunoblotted with anti-CCNB2(Cat# [TA590623]). Positive lysates [LY417829] (100ug) and [LC417829] (20ug) can be purchased separately from OriGene.



Western blot validation of overexpression lysate (Cat# [LY417829]) using anti-DDK antibody (Cat# [TA50011-100]). Left: Cell lysates from untransfected HEK293T cells; Right: Cell lysates from HEK293T cells transfected with RC211260 using transfection reagent MegaTran 2.0 (Cat# [TT210002]).



Coomassie blue staining of purified CCNB2 protein (Cat# [TP311260]). The protein was produced from HEK293T cells transfected with CCNB2 cDNA clone (Cat# RC211260) using MegaTran 2.0 (Cat# [TT210002]).