

Product datasheet for RC211257

DEC1 (NM_001359) Human Tagged ORF Clone

Product data:

Product Type:	Expression Plasmids
Product Name:	DEC1 (NM_001359) Human Tagged ORF Clone
Tag:	Myc-DDK
Symbol:	DEC1
Synonyms:	DEC1; NADPH; SDR18C1
Mammalian Cell Selection:	Neomycin
Vector:	pCMV6-Entry (PS100001)
E. coli Selection:	Kanamycin (25 ug/mL)
ORF Nucleotide Sequence:	>RC211257 ORF sequence Red=Cloning site Blue=ORF Green=Tags(s)

TTTTGTAATACGACTCACTATAGGGCGGCCGGAATTCGTCGACTGGATCCGGTACCGAGGAGATCTGCC
GCC**CGATCGCC**

ATGAAGCTACCGCCAGGGTTTTCTTTACTCTGGGGTCCCGGCTGCCCTGTGGCCTCGCTCCTCGGAGGT
TTTTTCAGTTATGGGACAAAAATATTATATCAAAACTGAAGCTTTGCAATCTAAATCTTTTACCTCT
TCAAAAAGCGATGCTACCACCTAATAGTTTTCAAGGAAAAGTGGCATTCTTACTGGGGAGGACTGGC
CTTGGTAAAGGAATGACAACTCTTCTGTCCAGCCTAGGTGCTCAGTGCATGATAGCCAGCCGGAAGATGG
ATGTTTTGAAAGCTACCGCAGAACAATTTCTTCTCAAAGTAAAGTTTCATGCAATTCAGTGTGA
TGTGAGGGATCCTGATATGGTTCAAAACTGTGTGAGAACTGATCAAAGTTGCAGGACATCCTAATATT
GTGATAACAATGCAGCAGGGAATTTATTTCTCTACTGAAAGACTTTCTCCTAATGCTTGAAAAACCA
TAACTGACATAGTTCTAAATGGCACAGCCTTCGTGACACTAGAAATGGAAAACTAATTAAGCACA
GAAAGGAGCAGCATTTCTTTCTATTACTACTATCTATGCTGAGACTGGTTCAGGTTTTGTAGTACCAAGT
GCTTCTGCCAAAGCAGGTGTGGAAGCCATGAGCAAGTCTCTTGCAGCTGAATGGGGTAAATATGGAATGC
GATTCATGTGATTCAACCAGGGCCTATAAAAACCAAGGTGCCTTTAGCCGTCTGGACCAACTGGAAC
ATTTGAGAAAAGAAATGATTGGCAGAATTCCTGTGGTGCCTGGGACTGTAGAAGAACTCGAAATCTT
GCTGCTTTCCTTTGTAGTGATTATGCTTCTGGATTAATGGAGCAGTCATTAATTTGACGGTGGAGAGG
AAGTACTTATTTAGGGGAATTCACGACCTGAGAAAGGTCACCAAGGAGCAGTGGGACACCATAGAAGA
ACTCATCAGGAAGACAAAAGTTCC

ACGCGTACGCGGCCGCTCGAGCAGAACTCATCTCAGAAGAGGATCTGGCAGCAATGATATCCTGGATT
ACAAGGATGACGACGATAAGGTTAA



[View online »](#)

Protein Sequence: >RC211257 protein sequence
Red=Cloning site Green=Tags(s)

MKLPARVFFTLGSRLPCGLAPRRFFSYGKILYQNTEALQSKFFSPLQKAMLPNSFQGVAFITGGGTG
 LGKGMTLLSSLGAQCVIASRKMDVLKATAEQISSQTGNKVHAIQCDVRDPDMVQNTVSELIKVAGHPNI
 VINNAAGNFISPTERLSPNAWKITIDIVLNGTAFVTLEIGKQLIKAQKGAFLSITTIYAETGSGFVVPS
 ASAKAGVEAMSKSLAAEWGKYGMRFNVIQPGPIKTKGAFSRLDPTGTFEKEMIGRIPCGRGLGTVEELANL
 AAFLCSDYASWINGAVIKFDGGEEVLISGEFNDLRKVTKEQWDTIEELIRKTKGS

TRTRPLEQKLISEEDLAANDILDYKDDDDKV

Chromatograms: https://cdn.origene.com/chromatograms/mk6373_c07.zip

Restriction Sites: SgfI-MluI

Cloning Scheme:

Cloning sites used for ORF Shuttling:



* The last codon before the Stop codon of the ORF

ACCN: NM_001359

ORF Size: 1005 bp

OTI Disclaimer: The molecular sequence of this clone aligns with the gene accession number as a point of reference only. However, individual transcript sequences of the same gene can differ through naturally occurring variations (e.g. polymorphisms), each with its own valid existence. This clone is substantially in agreement with the reference, but a complete review of all prevailing variants is recommended prior to use. [More info](#)

OTI Annotation: This clone was engineered to express the complete ORF with an expression tag. Expression varies depending on the nature of the gene.

Components: The ORF clone is ion-exchange column purified and shipped in a 2D barcoded Matrix tube containing 10ug of transfection-ready, dried plasmid DNA (reconstitute with 100 ul of water).

Reconstitution Method:

1. Centrifuge at 5,000xg for 5min.
2. Carefully open the tube and add 100ul of sterile water to dissolve the DNA.
3. Close the tube and incubate for 10 minutes at room temperature.
4. Briefly vortex the tube and then do a quick spin (less than 5000xg) to concentrate the liquid at the bottom.
5. Store the suspended plasmid at -20°C. The DNA is stable for at least one year from date of shipping when stored at -20°C.

Note: Plasmids are not sterile. For experiments where strict sterility is required, filtration with 0.22um filter is required.

RefSeq: [NM_001359.2](#)

RefSeq Size: 1251 bp

RefSeq ORF: 1008 bp

Locus ID: 1666

UniProt ID: [Q16698](#)

Cytogenetics: 8q21.3

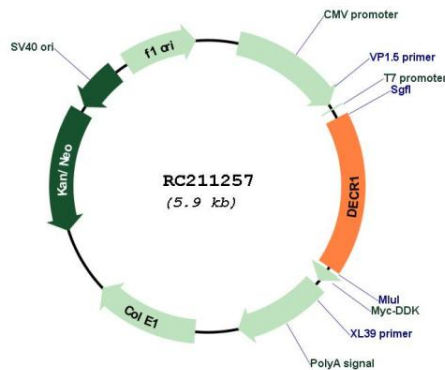
Domains: adh_short

Protein Families: Druggable Genome

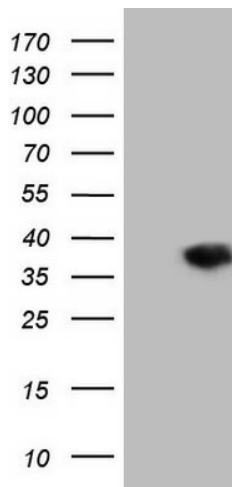
MW: 36.1 kDa

Gene Summary: This gene encodes an accessory enzyme which participates in the beta-oxidation and metabolism of unsaturated fatty enoyl-CoA esters. [provided by RefSeq, Jul 2008]

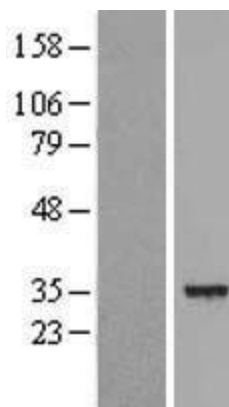
Product images:



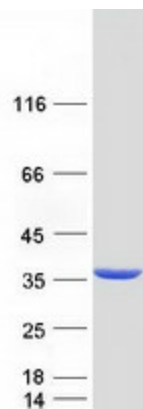
Circular map for RC211257



HEK293T cells were transfected with the pCMV6-ENTRY control (Cat# [PS100001], Left lane) or pCMV6-ENTRY DECR1 (Cat# RC211257, Right lane) cDNA for 48 hrs and lysed. Equivalent amounts of cell lysates (5 ug per lane) were separated by SDS-PAGE and immunoblotted with anti-DECR1 (Cat# [TA808965])(1:2000). Positive lysates [LY419973] (100ug) and [LC419973] (20ug) can be purchased separately from OriGene.



Western blot validation of overexpression lysate (Cat# [LY419973]) using anti-DDK antibody (Cat# [TA50011-100]). Left: Cell lysates from untransfected HEK293T cells; Right: Cell lysates from HEK293T cells transfected with RC211257 using transfection reagent MegaTran 2.0 (Cat# [TT210002]).



Coomassie blue staining of purified DECR1 protein (Cat# [TP311257]). The protein was produced from HEK293T cells transfected with DECR1 cDNA clone (Cat# RC211257) using MegaTran 2.0 (Cat# [TT210002]).